

EMT-08

USER GUIDE



Before using the instrument, please read this manual carefully and strictly follow the instructions in the manual to operate it

EMT-08

We insist that quality is above everything else

 WEIGHT LOSS MACHINE



Contact name: Sophia



WeChat



E-mail: sophia@kmslaser.com



Phone/Whatsapp/Wechat: +86 18676839070

COMPANY INFORMATION

KMS Electronic Technology Co., Limited

Address	Room 409, Number 1, Dongyue Industrial Park, Yongping street, Baiyun District, Guangzhou, China
Email	sophia@kmslaser.com
Brand	KMSLASER/GZNEWBELLE
Website	https://www.kmslaser.com/ https://www.gznewbelle.en.alibaba.com/

SAFETY INFORMATION

Dear user:

Thank you for choosing our products! This user instruction is specially designed for the safety of you and others. Please read the instructions carefully before installing or using the machine and follow them when using.

1.1 Electrical Safety

- ◆◆ Before installing the machine, make use that your local electric network complies with the voltage and frequency indicated on the tag on the rear panel. Otherwise, the machine may be damaged in case of excessive current or voltage rise.
- ◆◆ Never touch the machine with damp or wet hands or feet.
- ◆◆ It is dangerous to change or try to modify the function of this machine in any way.
- ◆◆ Do not attempt to operate this unit if the power cord has been frayed or broken
- ◆◆ Do not spill water or other liquids into or on to your unit.
- ◆◆ During long periods of non-use, disconnect the unit's main power.

1.2 Safety Rules When Installing

- ◆◆ Place the machine on a stable and secure base. It should not be subjected to any jolts or vibrations.
- ◆◆ Never expose the unit to too high ($>40^{\circ}\text{C}$) nor too low temperature ($<5^{\circ}\text{C}$)

- ◆◆ Never expose the unit to rain or any other humidity
- ◆◆ DO not expose the unit to direct sunshine or install the unit close to a source of heat (central heating, radiator...); otherwise the screen may be damaged.
- ◆◆ Do not cover or block the ventilator behind the unit.

1.3 Safety Rules When Installing

- ◆◆ Well clean areas to treat before treatment.
- ◆◆ Never touch the machine with damp or wet hands or feet.
- ◆◆ Never place the cavitation handpiece on the liver, kidney area.

THIS INSTRUMENT IS FOR FITNESS ONLY

OUTLINE

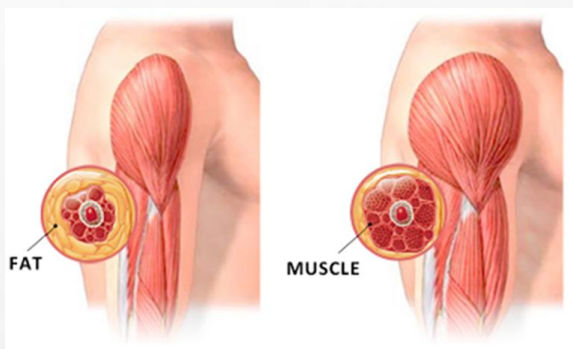
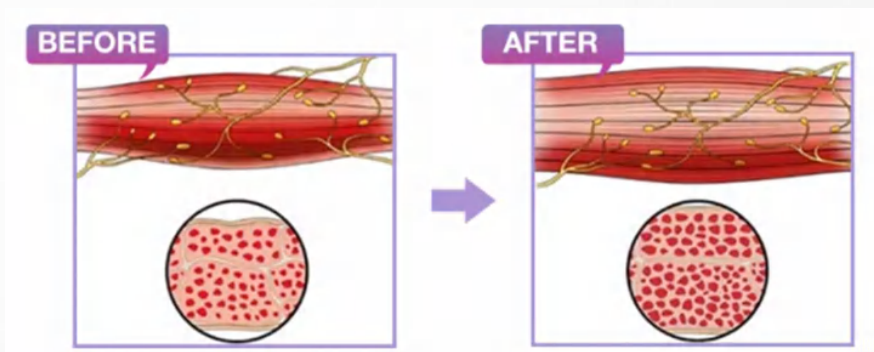
Muscles account for about 35% of the body, and most slimming devices on the market only focused on fat but not muscles. While currently only injections and surgery are used to improve the shape of the buttocks. In contrast, beauty muscle instrument, which uses the most advanced high-intensity focused magnetic vibration technology, directly stimulates motor neurons, so that the body's muscles continue to expand and contract (This kind of contraction cannot be achieved by your usual exercise or fit exercise) The energy pulse of 30 minutes treatment can stimulate 30000 strong muscle contractions, which help the fat cells to metabolize and decompose vigorously. At the same time, with muscle strengthening, it brings new technological experience for body shaping. It has won the international certification of FDA and CE, and its safety and effectiveness have been widely recognized.

Beauty muscle instrument has two treatment handles, which support synchronized work; it can be operated by two persons at the same time, and can be placed in the abdomen, buttock, upper arm (biceps, triceps), thigh and other parts. For those who want to quickly reduce fat and increase muscle or change their body shape, or those who have no time

or difficulty in persisting in exercise, can achieve abdominal muscle vest line, peach buttocks and separated rectus abdominis for postpartum women, It is an innovative reform equipment."HIFEM " can easily shape muscle and reduce fat for you, and the effect is remarkable. The device is non-invasive, safe and painless, no radiation, no side effects, no need for anesthesia, you can be thin when lying down, it can tighten muscles and lose weight, there is no discomfort during the treatment, and there is no need for a recovery period after the treatment.

WORKING PRINCIPLE

Beauty muscle instrument uses non-invasive HIFEM technology to release high-frequency magnetic vibration energy through two large treatment handles to penetrate the muscles to a depth of 8cm, and induce continuous expansion and contraction of muscles to achieve high-frequency extreme training, to deepen the growth of myofibrils (muscle enlargement), and produce new collagen chains and muscle fibers (muscle hyperplasia), thereby training and increasing muscle density and volume. The 100% limit muscle contraction of HIFEM technology can trigger a lot of lipolysis, Fattyacids are broken down from triglyceric acid, and accumulated in large amounts in fat cell.



The fatty acid concentration is too high, which will cause fat cells to apoptosis and be excreted from the body by normal metabolism within a few weeks. Therefore, HIFEM beauty muscle instrument can strengthen and increase muscles while achieving the effect of reducing fat.

ADVANTAGE

- 1、 It can set different muscle training modes.
- 2、 Suitable for men and women.
- 3、 It's safe and non-invasive, non-current, non-hyperthermia, and non-radiation, and no recovery period.
- 4、 No knife, no injection, no medicine, no exercise, no diet, Just Lying down can burn fat and build muscle, and reshape the beauty of lines.
- 5、 Saving time and effort, only lying down for 30 minutes = 30000 muscle contractions (equivalent to 30000 belly rolls / squats)
- 6、 It's simple operation and bandage type. The operating head only needs to be placed on the operating part of the guest, and it can be reinforced with a special equipment band, without the need for a beautician to operate the instrument, which is convenient and simple.
- 7、 It's non-invasive, and the process is easy and comfortable. Just lie down and experience it like a muscle is sucked up.

8、 During the treatment, there is only a feeling of muscle contraction, no pain and no sweat, and there is no side effects on the body, just do it and go.

9、 There are sufficient experimental studies to prove that the treatment effect is remarkable. It only takes 4 treatments within two weeks, and every half an hour, you can see the effect of reshaping the lines in the treatment site.

10、 The air cooling device prevents the treatment head from generating high temperature, The handle can work continuously for a long time, which greatly improves the service life and safety factor of the machine. and greatly improves the stability of energy output.

IT IS IMPORTANT TO CHOOSE THE RIGHT METHOD TO LOSE WEIGHT

- Choosing a relaxed and professional way to build muscle and burn fat without harming your health. Choice is more important than effort!
- Focused magnetic resonance (HIFEM) technology helps you gain muscle and lose fat easily.

only need to lie down for 30 minutes = 30000 times of muscle contraction (30 minutes of abdominal / hip treatment, equivalent to 30000 times of sit ups / squats), so that you can easily lie down to build muscles and reduce fat.

SLIMMING BODY MUST “BUILD MUSCLE”

◆ The more muscles, the faster fat burning

Muscle is the second part of the body that stores the largest basal metabolic rate. As long as the content of muscle increases, the basal metabolic rate can metabolize your calories faster and reach the level of "you can lose weight without moving." Why can muscular men get fat and thin? That's because they absorb well and consume more calories. The amount of muscle is directly proportional to consumption. People with more muscles will consume more calories. Therefore, muscular men can consume energy at any time, even sleeping, it consumes more than your exercise. If you want to develop a lean constitution, you must increase muscle

◆ Benefits of building muscle

- √ Improving obesity constitution and the efficiency of weight loss
- √ Building a strong and handsome body

- √ Preventing aging and maintaining physical youth
- √ Reducing chronic pain of muscles and joints

- √ Helping blood circulation smooth

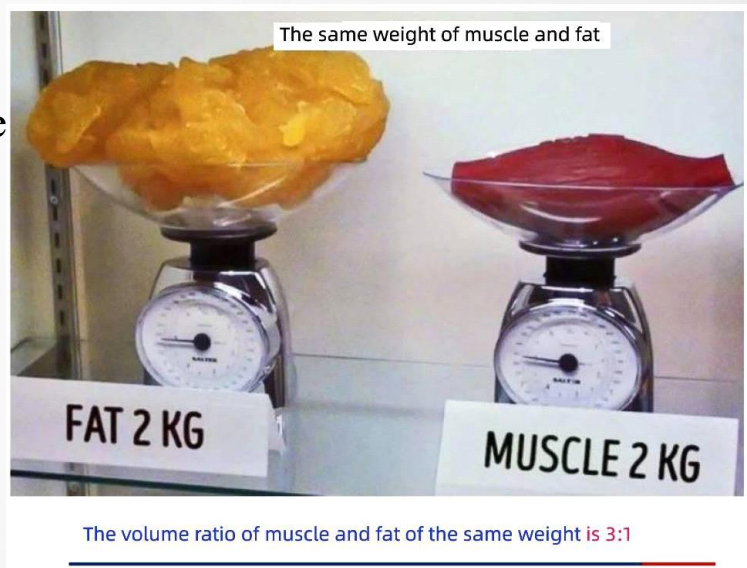
- √ Protecting the safety of uterus, intestine and other organs

- √ Improving and preventing diabetes

- √ Reducing high blood pressure to relieve the pressure of blood vessel

- √ Preventing heart disease

- √ Enhancing memory and preventing dementia



METHODS OF BUILDING MUSCLE & BURNING FAT



Exercising the abdominal muscles to shape the vest line.



Exercising the buttocks muscles to shape the peach buttocks.



Exercising the oblique muscles in adomen to shape mermaid line

1、 Medical research has proved that after completing a course of treatment, can effectively increase muscle by 16% and reduce fat by 19% at the same time. It presents the beautiful lines of waistcoat line, mermaid line and peach hip.

2、 Improving the abdominal muscles that have become loose due to separation of rectus abdominis, and shaping the vest line. It is especially suitable for mothers who have increased belly circumference and loose belly due to the separation of rectus abdominis after childbirth, returning to a girlish posture.

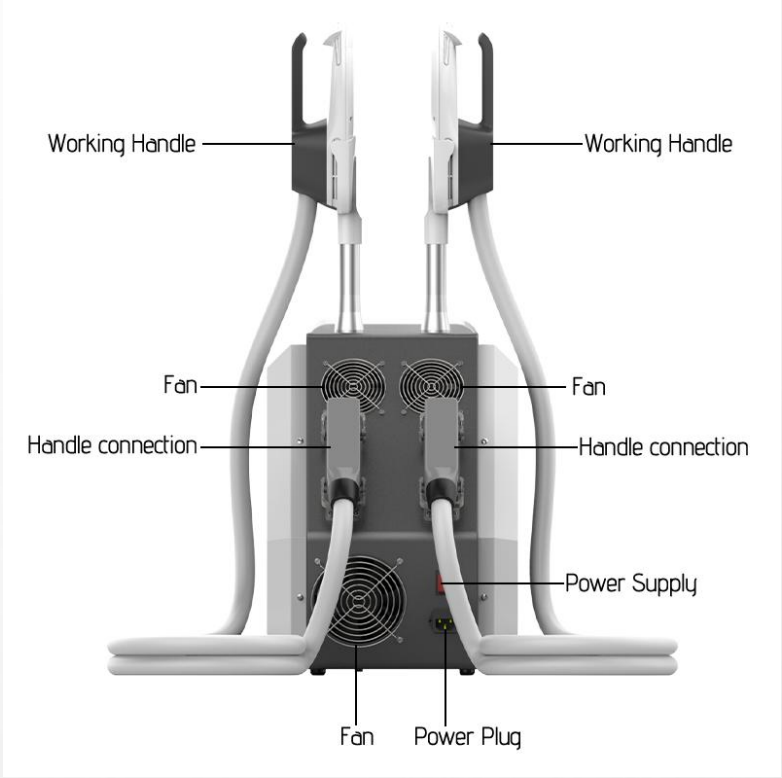
3、 Exercise strengthens the core muscle group, including the abdominal muscles of the large core group (rectus abdominis, external oblique muscle, internal oblique muscle, transverse abdominal muscle) and gluteus major muscle in the small core group. The core muscle group can protect the spine, maintain the stability of trunk, maintain the correct posture, improve the athletic ability and reduce the chance of injury, provide structural support for the whole body, and shape a healthy young body.

TECHNOLOGY- IMPROVING SEPARATION OF RECTUS ABDOMINIS



It may not be normal to have "mother belly" after childbirth! As many as 60% of mothers have a separation of rectus abdominis after delivery. As a result, the fetus has the opportunity to stretch the abdominal muscles during the growth of the fetus. Loss of support will make the organs fall down, resulting in postpartum abdominal relaxation and sagging, fat, protruding belly, and Lack of abdominal strength, which is often accompanied by low back pain, lumbar muscle strain and other problems. Once the rectus abdominis is separated, the traditional abdominal curling exercise will only make the abdominal muscles more open. However, the suture of rectus abdominis through cesarean section is not a good strategy because of its great trauma and slow recovery. Only HIEMT brings non-invasive technology to postpartum women and solves the separation of rectus abdominis for many mothers, The latest MRI and CT computed tomography medical research confirmed that after the HIEMT treatment, the separation of rectus abdominis was reduced by an average of 11%, while fat loss was reduced by 19% and muscle growth was 16%. It is the perfect solution for mothers to lose weight and maintain health after deliver.

PARTS INTRODUCTION



ACCESSORIE



Work handle



Accessories frame



Bandages

Any part of instrument made of PMMA material (for example: accessories shelf, panel, transparent handles, etc.). Do not use alcohol or corrosive solvent to wipe clean.

DAILY MAINTENANCE

- The instrument must use a plug with a grounding pin, and ensure that the power socket of the instrument is well grounded.
- Ensuring that the power supply is stable and adaptable. If the local power supply voltage is unstable, it is recommended that the user add a regulated power supply with matching power. Special reminder: The power cord of the socket is required to be more than 1.5 square meters.
- When the device is in use, keep away from the wall and keep a 30cm space around the device for heat dissipation.
- After each treatment, wet the towel with normal saline to clean the accessories.
- Do not use alcohol or corrosive solvents to clean the host and handle to avoid damage.
- The working handle should be handled gently, and it is strictly forbidden to drop it to avoid damage.
 - In the process of use, the working handle should avoid extreme bending and damage.
- Do not place the instrument in an environment with high temperature, humidity, dust, and direct sunlight. The instrument should be placed in a dry, cool and ventilated room with a temperature of 5 to 40°C and a humidity of no more than 80%.
- When the instrument is not in use, please turn off the power, then unplug the power plug and

PRECAUTIONS AND CONTRAINDICATIONS

- ◆ Don't operate head, neck/carotid artery, wealth bag position, or near the thoracic gallery.
- ◆ The two handles cannot work against each other.
- ◆ The healer should not carry any metal objects.
- ◆ Don't be full during treatment, and treat at least 1 hour after meals.
- ◆ The operation site and treatment probe should be dry without water.
- ◆ The operating energy varies from person to person and increases gradually from low energy.
- ◆ The total operating time of a day does not exceed 1.5 hours, and one part does not exceed 1 hour.
- ◆ Do not put any electronic products or metal objects on the instrument during operation.
- ◆ Don't eat or enter water during operation
- ◆ After the end of the operation, try to eat again after 1 hour (drink more water and eat food with high protein content).
- ◆ Those people with the following conditions cannot receive treatment:
 - 1、 The project should avoid menstruation, pregnancy and lactation;
 - 2、 Those patients with heart disease, hypertension, thyroid, malignant tumor, renal failure, epilepsy and muscle strain should be used cautiously;
 - 3、 Those people with metal or electronic implants (metal contraceptive ring, cardiac pacemaker, cardiac defibrillator, nerve stimulator, drug pump and stent) should be used cautiously;
 - 4、 Those patients with thrombophlebitis, cerebrovascular disease (stroke patients), brain injury or with brain surgery should be used cautiously

TECHNIQUEPARAMETER

Product name	Muscle Building Equipment
Handles	2 pcs
handle size	25*8cm
Voltage	110V/220V 50-60Hz
package type	Aluminium box
screen	Color touch screen
Magnetic output intensity	0-7 Tesla
Level	10%-100%
Time	30min
F1/F2/F3	1-38Hz/1-30Hz/1-5Hz
Machine size	52*33*43
Gross weight	40KG

place the various accessories of the instrument. If possible, cover the instrument with a dust cover.

- It is strictly forbidden to disassemble and modify equipment without authorization.
- If there is any fault in the equipment, it should be shut down immediately and please contact us.

WARRANTY CARD

Manufacturer	KMS Electronic Technology Co,Limited
Product name	Muscle Building Equipment
Model number	
Place of origin	Guangzhou, China
Production date	
Purchaser	
Purchase date	
Warranty notice	Two years
Electrical	<input type="checkbox"/> 220V/50Hz <input type="checkbox"/> 110v/60Hz