



SIB 11 03 21

2021-05-17

## B58 ENGINE: ENGINE OIL FILTER REMOVAL PROCEDURE AND TOOLS

### MODEL

F22 (2 Series Coupe)	F23 (2 Series Convertible)	F30 (3 Series Sedan)	F32 (4 Series Coupe)
F33 (4 Series Convertible)	F34 (3 Series Gran Turismo)	F36 (4 Series Gran Coupe)	G01 (X3 Sports Activity Vehicle (SAV))
G02 (X4 Sports Activity Coupe (SAC))	G05 (X5 SAV)	G05 (X6 SAC)	G07 (X7 SAV)
G12 (7 Series Sedan)	G14 (8 Series Coupe)	G15 (8 Series Convertible)	G16 (8 Series Gran Coupe)
G20 (3 Series Sedan)	G29 (Z4 Roadster)	G30 (5 Series Sedan)	G32 (6 Series Gran Turismo)

All B58 engine variants

### SITUATION

A. For the B58 engines, a BMW Oil Catch special tool for use in conjunction with removing the engine oil filter insert is now available.

- This tool helps to significantly lessen the amount of engine oil spillage, reducing the corresponding clean-up time and the amount of cleaning materials used.

B. On the rare occasions, when performing an engine oil service, the BMW Original (Genuine) engine oil filter insert is either difficult to remove or it breaks apart in the oil filter housing.



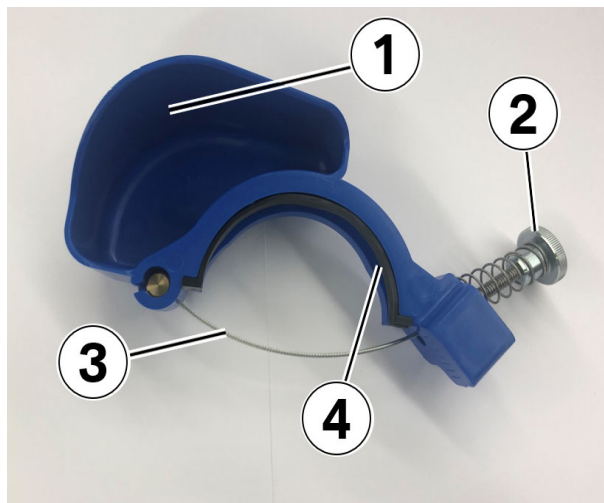
For example, the filter paper is torn, and the lower plastic section remains stuck inside the engine oil filter housing (1).

Copyright ©2021 BMW of North America, Inc.

## PROCEDURE

A. Use the following procedure in conjunction with the steps and precautions outlined in the Repair Instruction 00 00 610 Engine Oil Service.

In all cases before removing the engine oil filter housing cap use the tool described in the Service Bulletin.



1. Install special tool 83 30 5 A3B 354 BMW Oil Catch onto the side of the oil filter housing.

Overview:

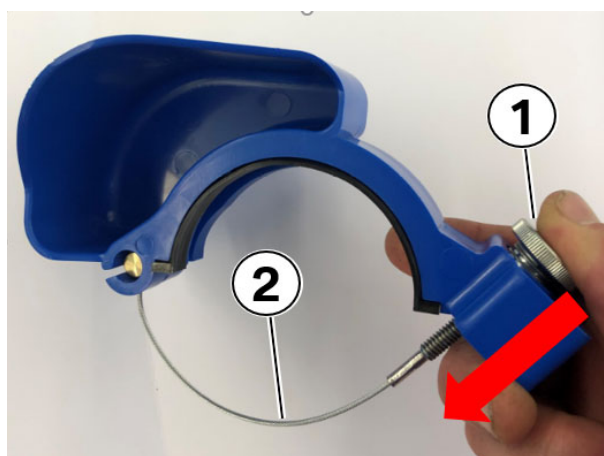
Oil catch cavity (1) will catch any engine oil drippings as you remove the oil filter and cap.

Thumb screw and spring (2) will keep tension on the cable (93).

The lip seal (4) will ensure no oil leaks between the special tool and the oil filter housing.

This tool was sent to your center via the Automatic Tool Shipment Program. Refer to a [SI B04 01 21](#) for additional details.

Each center received 1 tool per 3 technicians. Additional tools can be purchased using P/N 83 30 5 A3B 354.



2. With the thumbscrew fully released (1), press against the thumbscrew in the direction of the arrow.

This will allow the tool and retaining cable (2) to slip over the oil filter housing in the next step.

3. Slide the tool over the oil filter housing and align it to the oil filter housing.

Do not tighten the thumbscrew yet (1).

Copyright ©2021 BMW of North America, Inc.

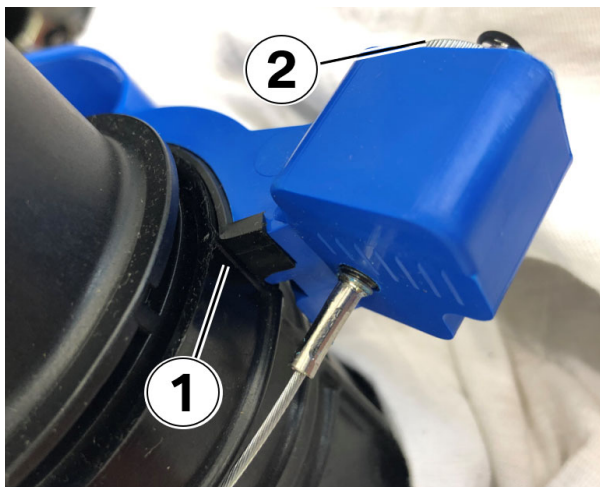


See the next steps to properly index the tool in the proper location.



4. Ensure the cable is positioned correctly on the side of the oil filter housing (1).

For clarity, the tool is installed on an oil filter housing removed from the vehicle in some photos.



5. The oil filter housing has two small injection molding seams on either side. The tool will align with the seams and lock into place (1).

Tighten the thumbscrew gently (2).

6. Turn the oil filter housing cap two turns counterclockwise (loosen) and stop.

7. Turn the oil filter housing cap two turns clockwise (tighten) and stop.



8. Slowly remove the oil filter housing cap and the filter insert.

Regardless if the cap and filter are removed together or separate the oil catch tool will contain the drippings (1) in the cavity.

Photo shown with oil filter housing cap removed.

9. If the engine oil filter releases from the oil filter housing cap (the filter element is not broken). Use rubber gloves or a shop towel to grab the oil filter. Turn the filter two turns counterclockwise (loosen) while pulling outward.

10. Turn oil filter housing two turns clockwise (tighten) while pulling outward.

11. Try to remove the oil filter by pulling outward.

12. If the engine oil spills out of the oil filter housing, then that residual engine oil will again be caught by the oil catch (1).
--------------------------------------------------------------------------------------------------------------------------------------

Copyright ©2021 BMW of North America, Inc.



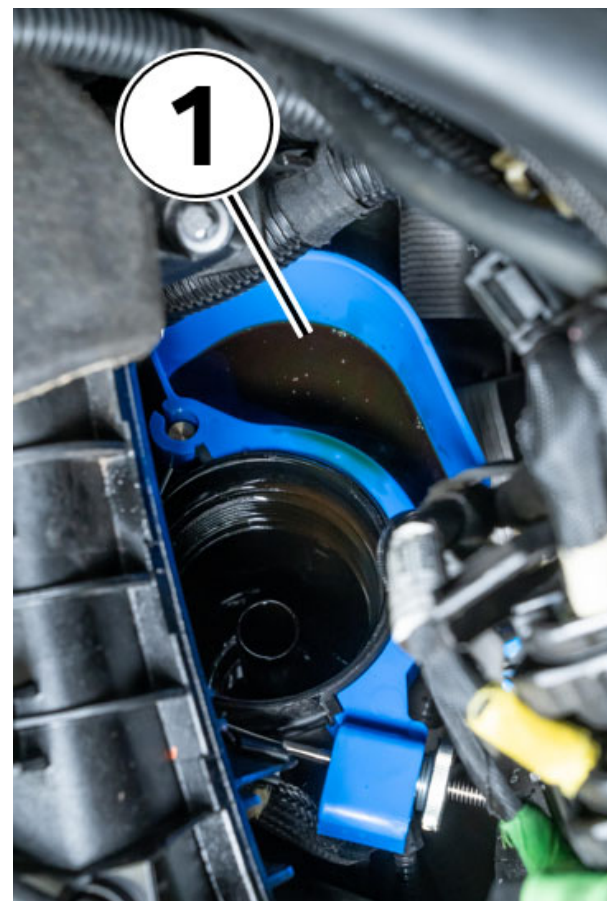


Photo shown with oil filter housing cap and filter removed.

13. After reinstalling the new oil filter and oil filter, torque the oil filter cap to a repair instruction specification.

Gently remove the oil catch special tool. Place a shop towel underneath the oil catch tool to ensure all drippings are contained while removing it.

Wipe the side of oil filter housing clean with a shop towel.

**B. If the engine oil filter insert has broken apart inside the oil filter housing:**

1. Replace the complete engine oil filter housing per the applicable repair instructions.
  - **Do not replace the heat exchanger**
  - **Do not remove or try to clean the oil filter fragments from the engine oil filter housing**
  
2. When the oil filter housing is removed from the engine,
  - Allow time for the residual engine oil to drain into a suitable container before returning the part to the WPRC
  - Do not use any solvents on the oil filter housing

**All parts will be collected and inspected by the WPRC**

Copyright ©2021 BMW of North America, Inc.

## PARTS INFORMATION

For item B, obtain and confirm the part numbers for your specific vehicle by entering the chassis number in either ETK or AIR which takes into account specific equipment and/or options.

Part Number	Description	Quantity
Refer to ETK	Oil filter housing complete (includes the oil filter insert)	1

Refer to the ETK and the applicable repair instructions for one-time use fasteners and/or component information regarding additional or replacement screws, gaskets, seals and fluids (drained) that need to be installed/replaced and claimed.

## WARRANTY INFORMATION

The the item B issue described in the Situation and Procedure sections is covered under the terms of the BMW New Vehicle Limited Warranty for Passenger Cars and Light Trucks.

Defect Code:	1142003700	Main flow, oil filter loose
---		
Labor Operation	Description	Labor Allowance
11 42 520	<b>Removing and installing/replacing full-flow oil filter completely (in conjunction with either a maintenance service or other repair that required an engine oil and filter insert replacement) (Plus work)</b>	Refer to AIR

Refer to AIR for the corresponding flat rate unit (FRU) allowances.

### **BMW Maintenance Program**

If the vehicle has an active maintenance program and the Engine oil Service task shows Recommended or Due in the Service status field or it qualifies to be performed based on a Bundling Eligible procedure (BE), then:

- Perform the Engine oil Service task, and
- Reset the CBS data, then

Submit and claim for the applicable engine oil part number and quantity under the BMW Maintenance Program (Defect Code).

Do not claim for the oil filter insert, the replacement oil filter housing includes an new oil filter insert.

### **Sublet – Bulk Materials (RO and Claim Comments Required)**

<b>Sublet Code 4</b>	See the sublet reimbursement calculations below	Reimbursement for the repair-related bulk materials, excluding the engine oil (Do not use the BMW part numbers for claim submission)
----------------------	-------------------------------------------------	--------------------------------------------------------------------------------------------------------------------------------------

Sublet reimbursement calculation for claiming the applicable repair-related bulk materials (BMW part numbers) is at the center net price amount for the quantities used plus your center's handling.

BMW Antifreeze/Coolant: Claim the corresponding sublet dollar amount for the quantity needed to replace what was drained with a 50/50 coolant/water solution.

Enter this material cost in sublet and itemize the amount on the repair order and in claim comment section.

### **QUESTIONS REGARDING THIS BULLETIN**

Technical inquiries	Submit feedback at the top of this bulletin
Warranty inquiries	Please contact the Warranty department by either using the Live Chat that's available in the Warranty Documentation Portal or through IDS by selecting Coverage, Policy, Coding Questions and Mileage Corrections
Parts inquiries	Submit an IDS ticket to the Parts Department