

Instruction Guide:
- Sprinter -
Hood Light Mount Kit

Checklist



- + REVIEW PACKING SLIP TO ENSURE YOU'VE RECEIVED ALL COMPONENTS**
- + PREPARE ALL TOOLS NECESSARY FOR PRODUCT INSTALLATION**
- + PRE-MEASURE DISTANCES OF ALL PRODUCT MOUNTING LOCATIONS**
- + CONFIRM CLEARANCES FOR OTHER INSTALLED BUILD COMPONENTS**
- + FOLLOW ALL SAFETY PRECAUTIONS WHEN WORKING ON THE VEHICLE**

Packing Slip



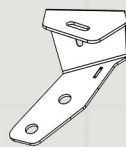
Components List

VNSPD-067-(SUBASSEMBLY#)

Hood Light Mount (Driver)

VNSPD-067-SA1

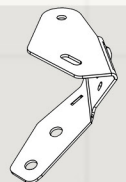
Quantity : x1



Hood Light Mount (Passenger)

VNSPD-067-SA2

Quantity : x1



Hardware Kit

VNSPD-067-HK

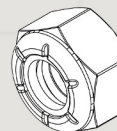
M8 Steel Flat Washers

Quantity : x4



M8 Nylon Lock Nuts

Quantity : x4

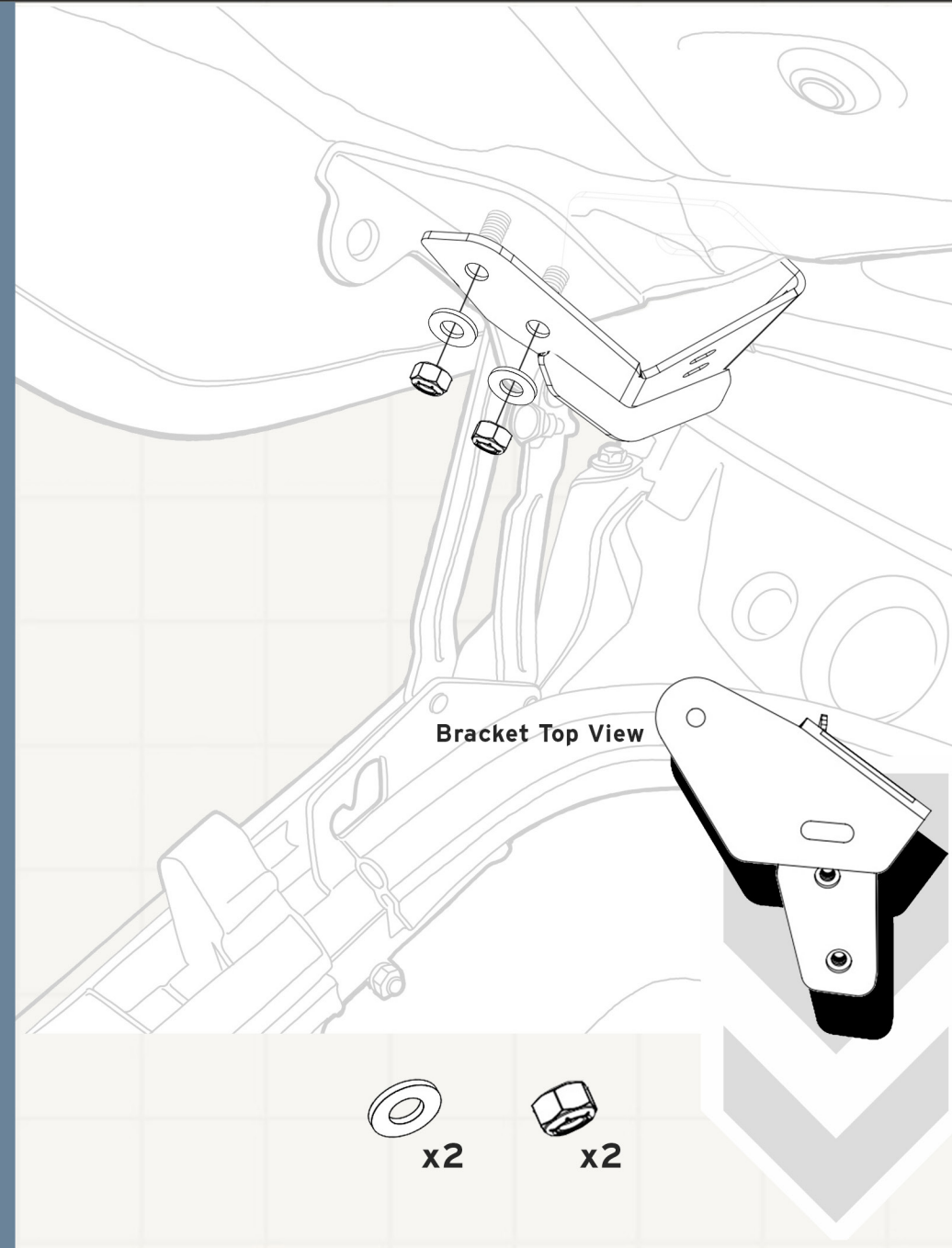


Step 01



Fasten the passenger-side bracket to the correlating hood hinge

From the inside of the hood on the passenger side, use (x2) M8 nylon locking nuts w/ (x2) M8 steel flat washers to secure the lower end of the passenger-side mounting bracket to the hood hinge studs with the upper portion of the bracket wrapping around the hood towards the outside.

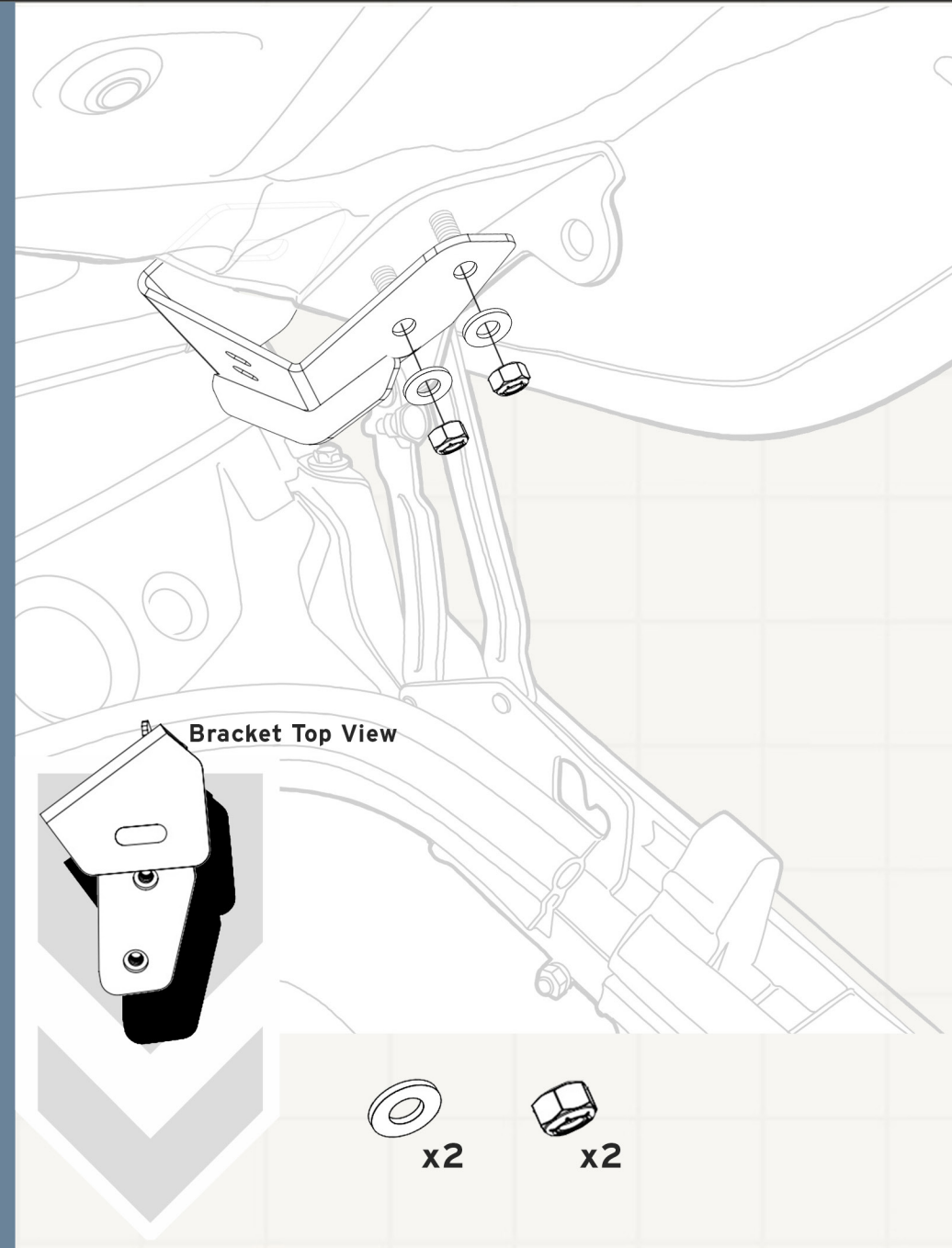


Step 02



Fasten the driver-side bracket to the correlating hood hinge

From the inside of the hood on the driver side, use (x2) M8 nylon locking nuts w/ (x2) M8 steel flat washers to secure the lower end of the driver-side mounting bracket to the hood hinge studs with the upper portion of the bracket wrapping around the hood towards the outside.



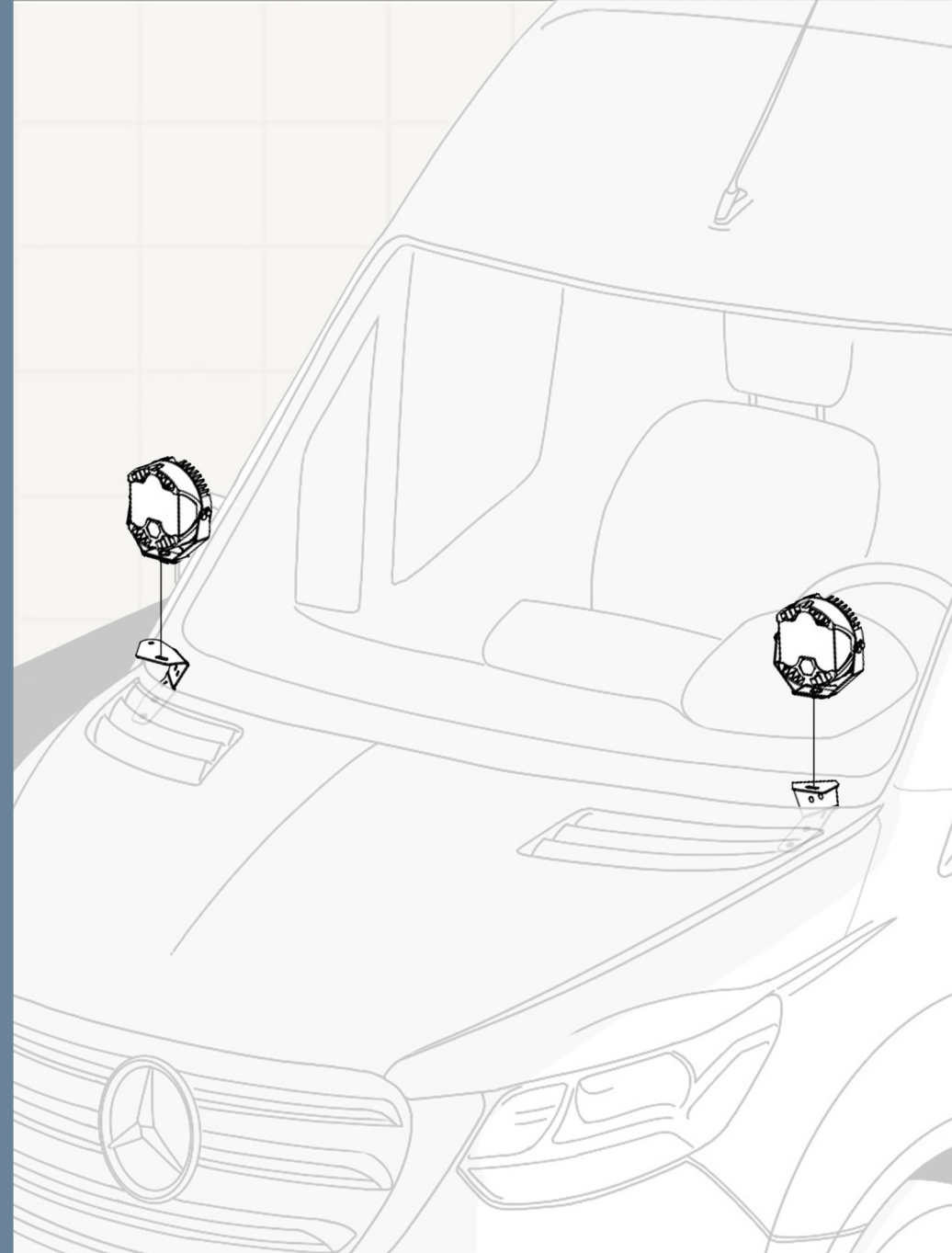
Step 03



Install your aftermarket accessories of choice to the mounting brackets

Once both mounting brackets have been secured to the vehicle from the inside of the hood, you may close the hood and begin the installation process for your lights and/or antenna.

Please refer to the installation guide included in those products for further installation procedure.



You've Reached the Finish Line

