

Instruction Guide:
- Sprinter -
Front Skid Plate (2023+)

Checklist



+ REVIEW PACKING SLIP TO ENSURE YOU'VE RECEIVED ALL COMPONENTS

+ PREPARE ALL TOOLS NECESSARY FOR PRODUCT INSTALLATION

13MM HEX SOCKET

5/32" HEX DRIVE SOCKET

5MM HEX DRIVE KEY (ONLY IF VANSPEED BAJA FRONT BUMPER IS ALREADY INSTALLED)

+ CONFIRM CLEARANCES FOR OTHER INSTALLED BUILD COMPONENTS

+ FOLLOW ALL SAFETY PRECAUTIONS WHEN WORKING ON THE VEHICLE

Packing Slip



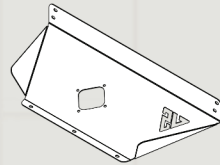
Components List

VNSPD-052B- (SUBASSEMBLY#)

Front Plate

VNSPD-052B-SA1

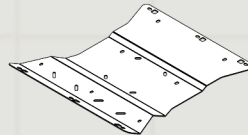
Quantity : x1



Mid Plate

VNSPD-052B-SA2

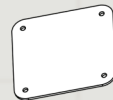
Quantity : x1



Oil Drain Cover

VNSPD-052B-SA3

Quantity : x1

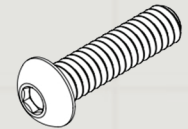


Hardware Kit

VNSPD-052B-HK

1/4" Button Head Bolts

Quantity : x14



1/4" Sealing Washers

Quantity : x10



1/4" Clip-on Barrel Nuts

Quantity : x10



Step 01

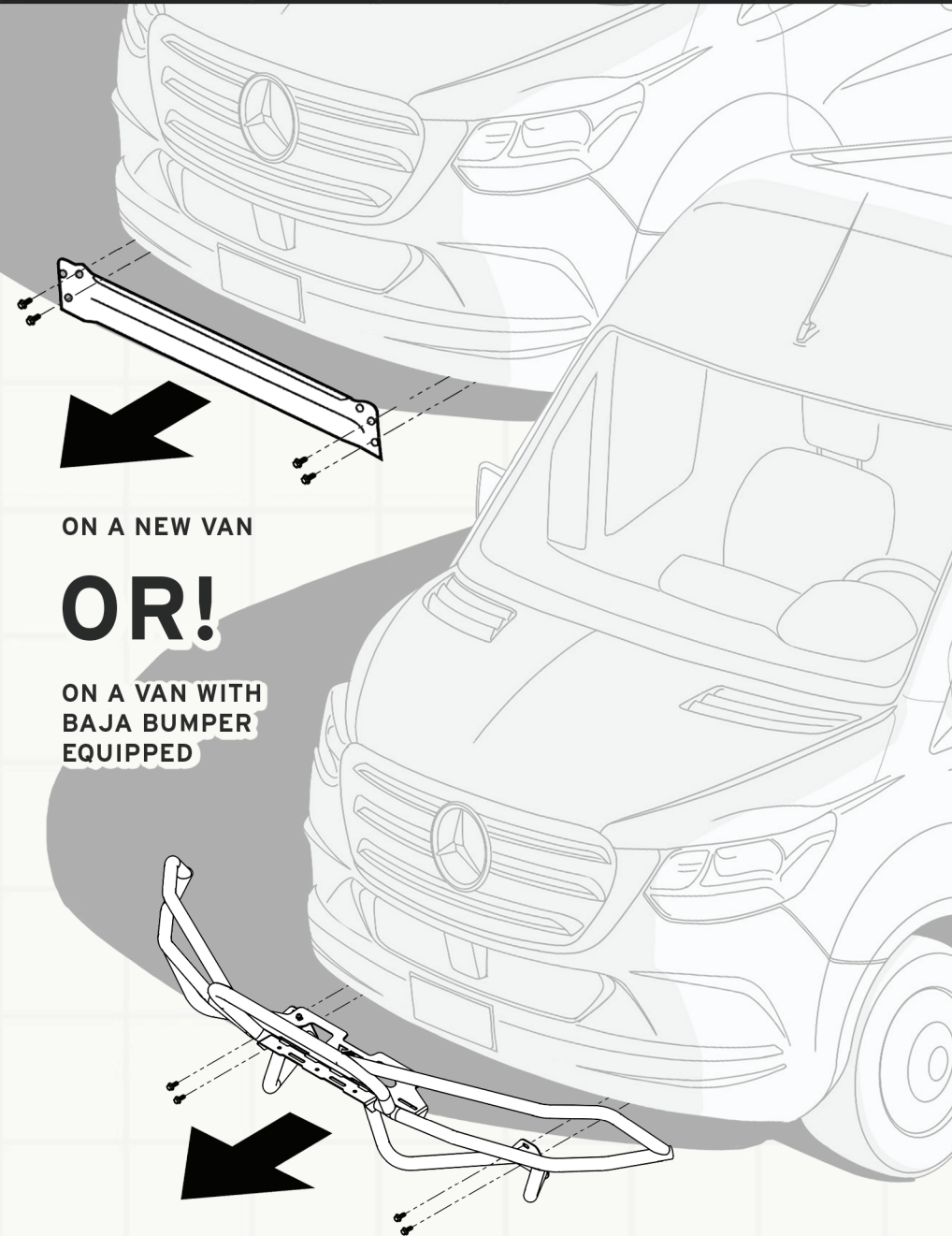


Remove OEM Lower Support Brace / Baja Front Bumper

Before getting started, you'll need to free up the (x2) pairs of forward-facing OEM 13mm hex head bolts that hold either the OEM Lower Lateral Support Brace OR the Vanspeed Baja Front Bumper to the front end of the vehicle.

These bolts will be used for installing the Front Plate into place in Step 04.

NOTE; If the van is equipped with a Vanspeed Baja Bumper, you can choose either remove the bumper, or loosen it from the top (x2) metric bolts with a 5mm hex key after removing the (x4) bolts down below



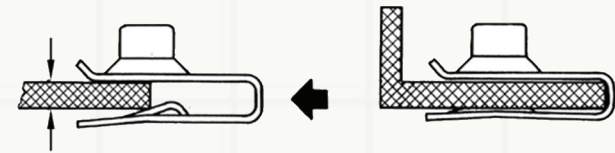
Step 02



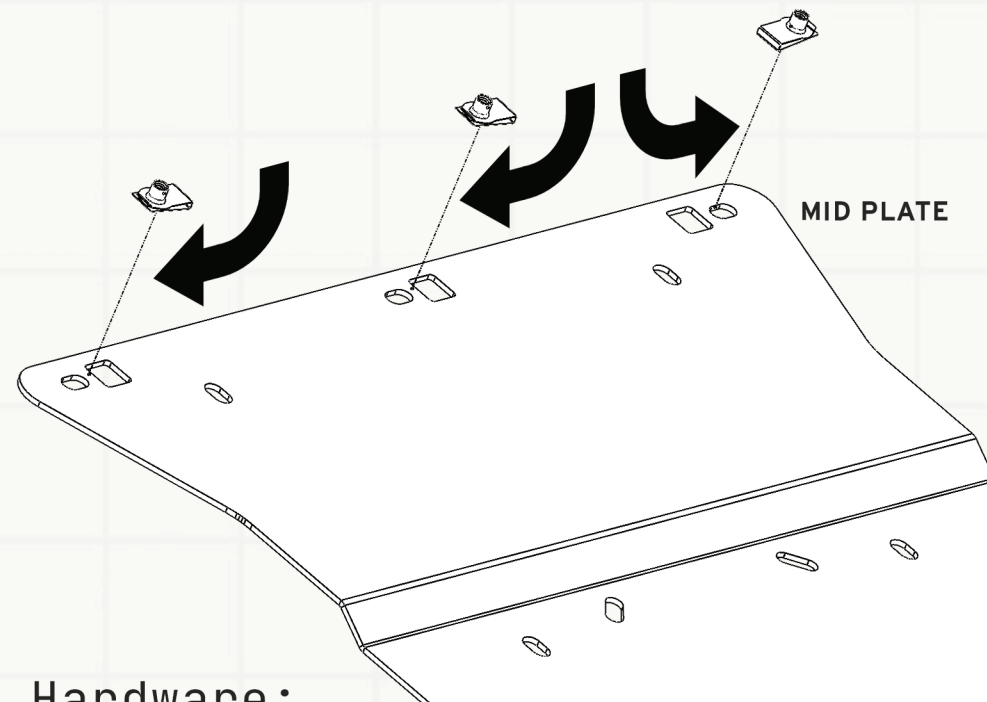
Place the Clip-On Barrel Nuts on to the Mid Plate

Place (x3) of the clip-on nuts included in the Hardware Kit on to the Mid Plate in the areas indicated on the diagram.

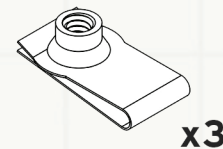
NOTE; Be sure that all of the threaded barrels are clipped-in facing upwards as-shown



INSERT THROUGH SQUARE CUTOUT
BARREL FACING UP, CONCENTRIC WITH THROUGH-HOLE



Hardware:



x3



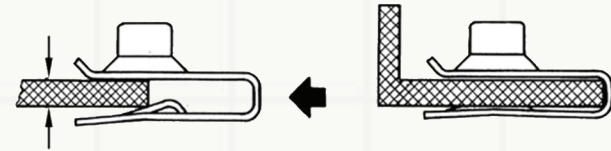
Step 03



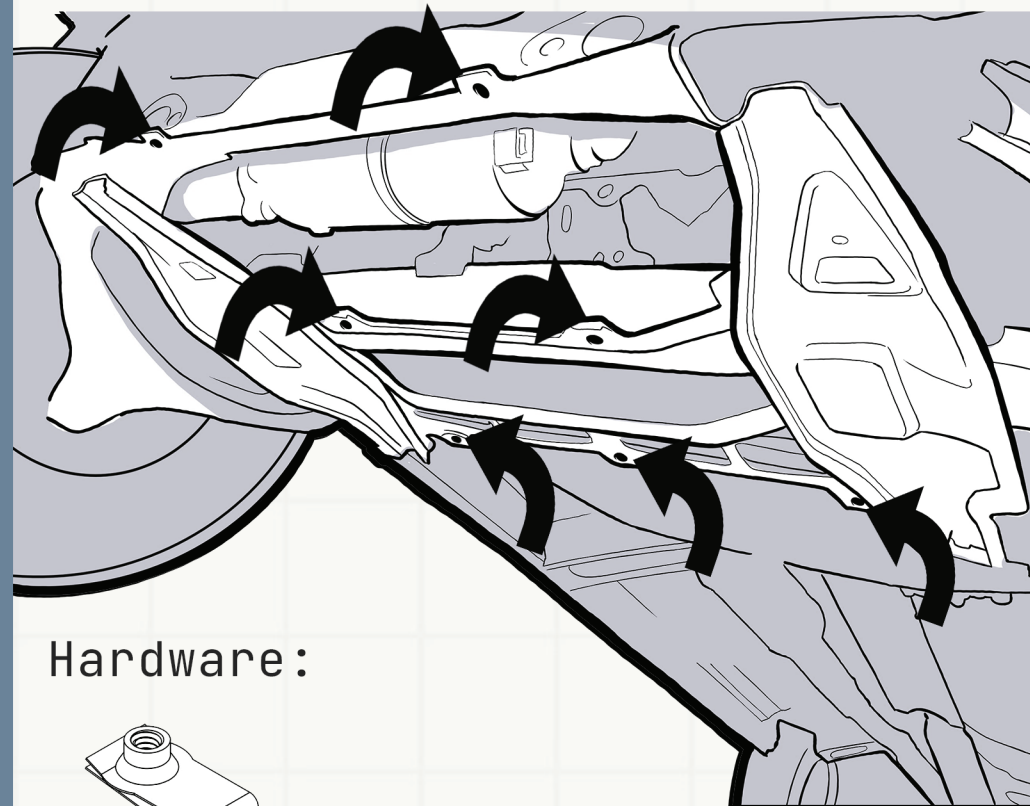
Place the Clip-On Barrel Nuts on to the underbody of the chassis

Place the remaining (x7) clip-on nuts on to the chassis in the areas indicated on the underbody diagram.

NOTE; Be sure that all of the threaded barrels are clipped-in facing upwards as-shown

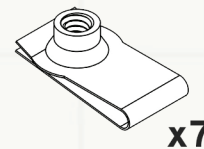


INSERT ALONG THE EDGE OF THE CROSSMEMBERS
BARREL FACING UP, CONCENTRIC WITH THROUGH-HOLE



(LOW-ANGLE DRIVER-SIDE FLOOR VIEW)

Hardware:



x7



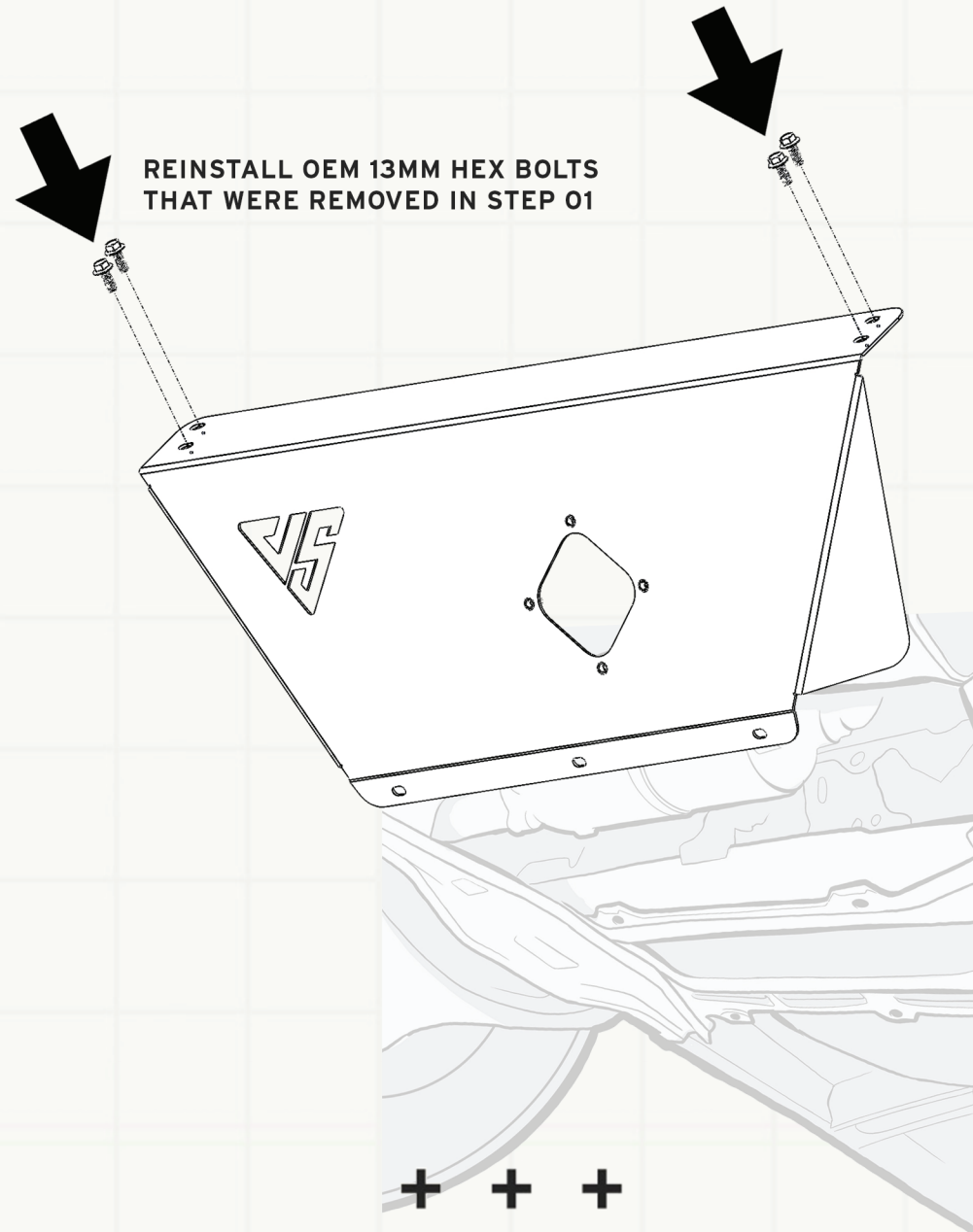
Step 04



Thread the Front Plate into place using the OEM chassis hardware

Once all of the clip-on barrel nuts have been placed, lift the front plate up to the (x4) forward-facing lower threaded holes and reinstall the (x2) pairs of 13mm hex head bolts, but DO NOT fully tighten them.

NOTE; If you removed/loosened your Vanspeed Baja Bumper during Step 01, you may place the lower mounting point OVER TOP the forward-facing flange on the Front Plate as you reinstall the OEM hardware



Step 05

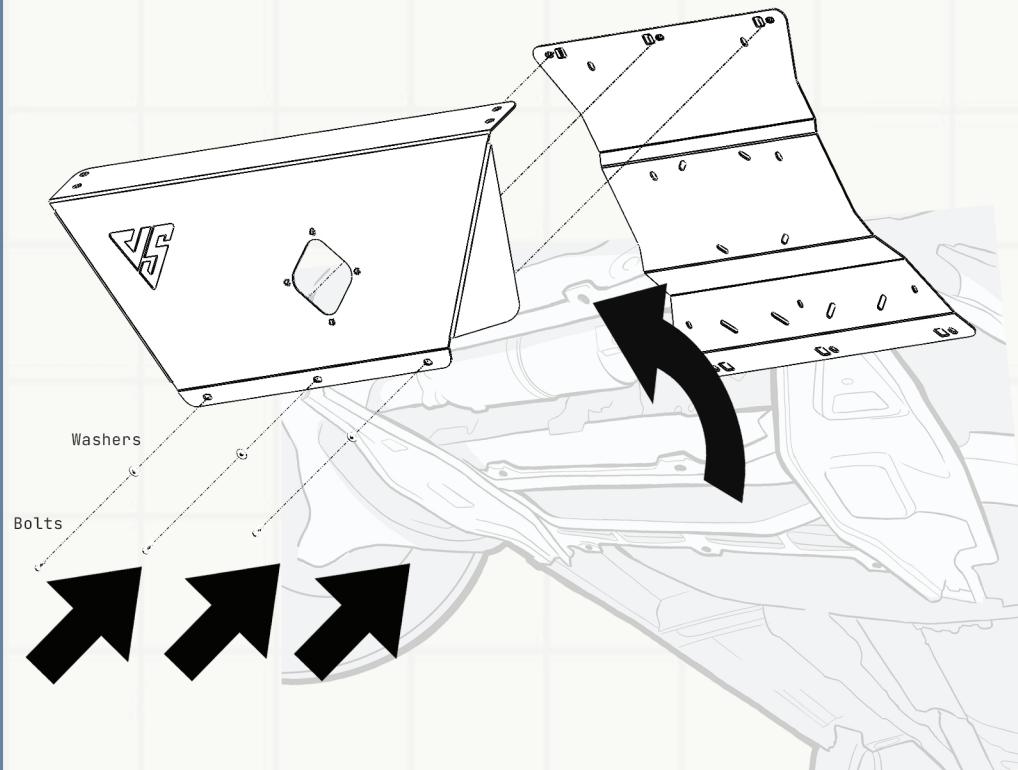


Insert hardware to connect the Mid Plate to the Front Plate

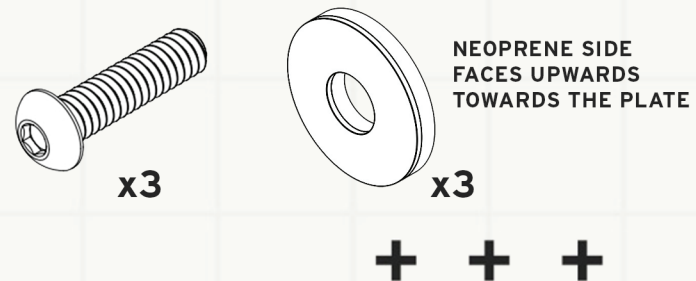
Once the Front Plate is held loosely into place off the front-end of the vehicle, slide the Mid plate up and over top the Front Plate from behind the rear-facing flange.

Once the (x3) holes are lined up, from the bottom facing up, thread (x3) button head bolts w/ (x3) sealing washers through both plates and into the (x3) clip-on barrel nuts.

NOTE; Leave this hardware loose to allow for some adjustability in the following steps.



Hardware:



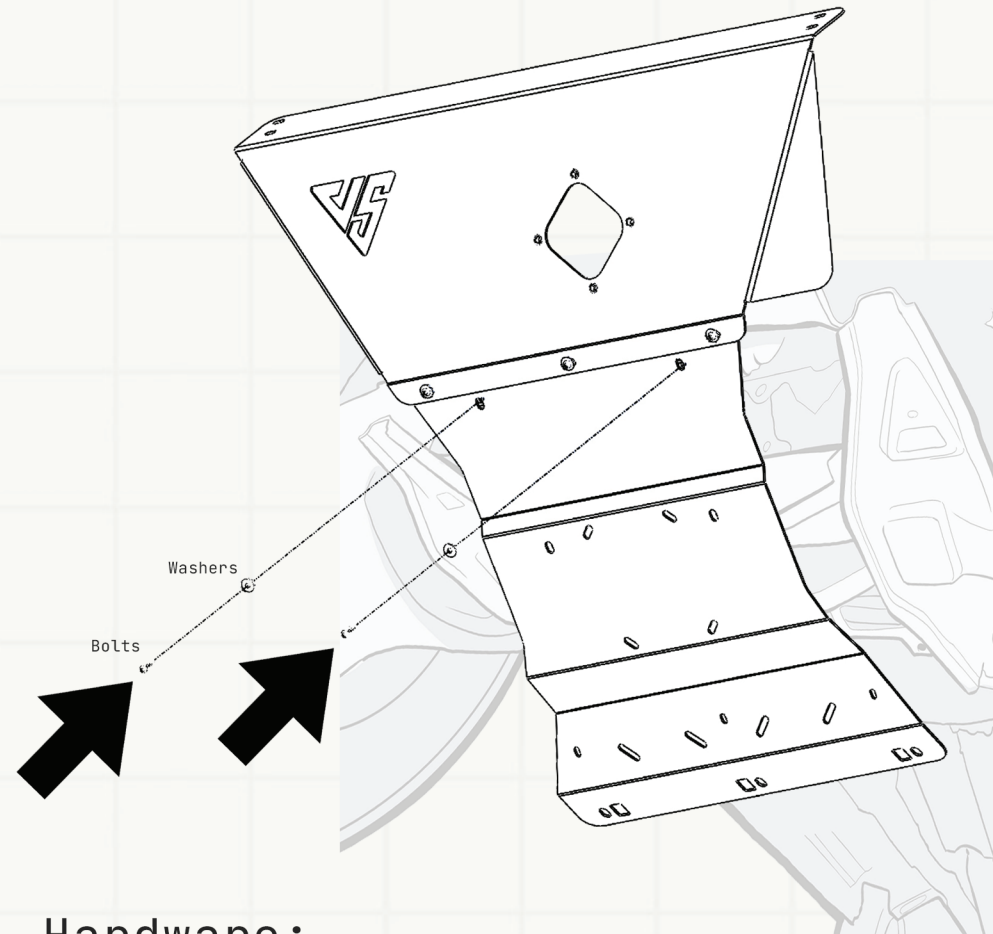
Step 06



Begin applying hardware to the Mid Plate through the chassis

Starting from the front of the Mid Plate working your way towards the rear, from the bottom facing up, thread (x2) button head bolts w/ (x2) sealing washers (neoprene side facing up) through the front (x2) slotted openings in the Mid Plate into the clip-on nuts placed on the chassis in Step 03.

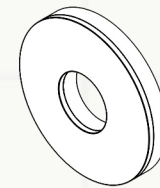
NOTE; Leave this hardware loose to allow for some adjustability in the following steps.



Hardware:



x2



NEOPRENE SIDE
FACES UPWARDS
TOWARDS THE PLATE

x2



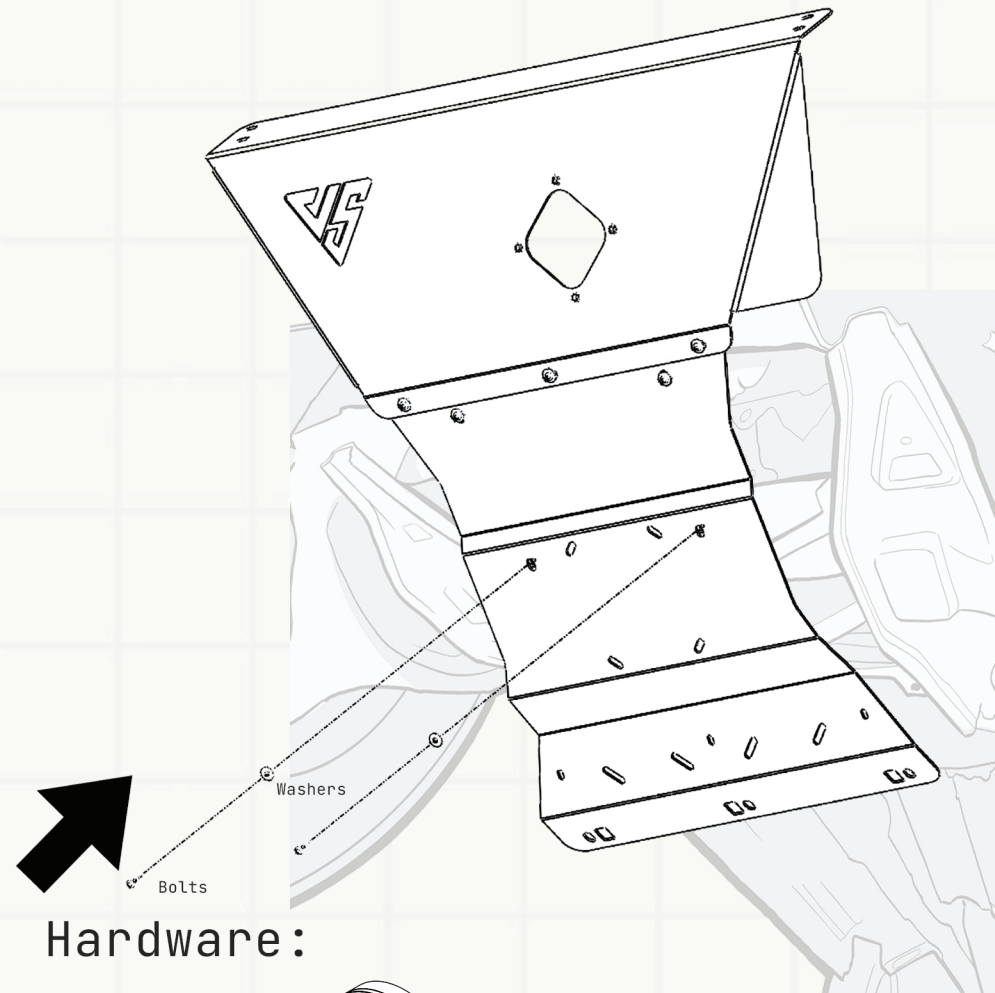
Step 07



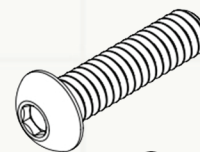
Continue applying hardware to the Mid Plate through the chassis

Starting from the front of the Mid Plate working your way towards the rear, from the bottom facing up, thread (x2) button head bolts w/ (x2) sealing washers (neoprene side facing up) through the front (x2) slotted openings in the Mid Plate into the clip-on nuts placed on the chassis in Step 03.

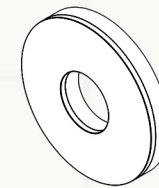
NOTE; Leave this hardware loose to allow for some adjustability in the following steps.



Hardware:



x2



NEOPRENE SIDE
FACES UPWARDS
TOWARDS THE PLATE

x2



Step 08

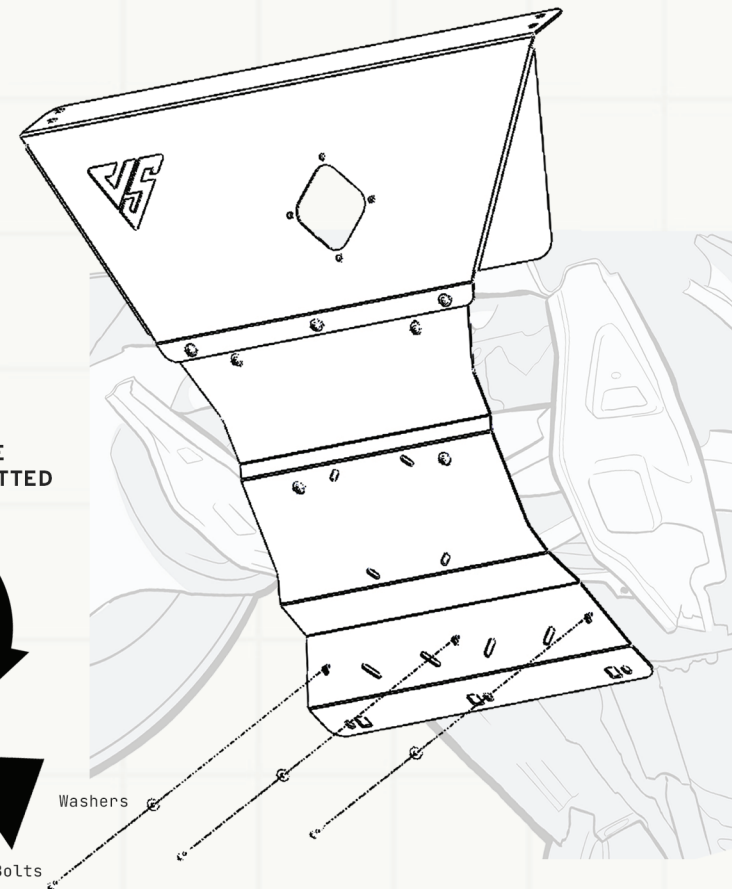


Finish applying hardware to the Mid Plate through the chassis

Starting from the front of the Mid Plate working your way towards the rear, from the bottom facing up, thread (x3) button head bolts w/ (x3) sealing washers (neoprene side facing up) through the front (x3) slotted openings in the Mid Plate into the clip-on nuts placed on the chassis in Step 03.

Once all of the bolts are in place & the Skid Plate is securely in place on the chassis, tighten all bolts from front to rear.

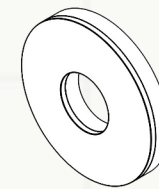
TIGHTEN DOWN
ALL LOOSE HARDWARE
ONCE THE PLATE IS FITTED



Hardware:



x3



NEOPRENE SIDE
FACES UPWARDS
TOWARDS THE PLATE

x3

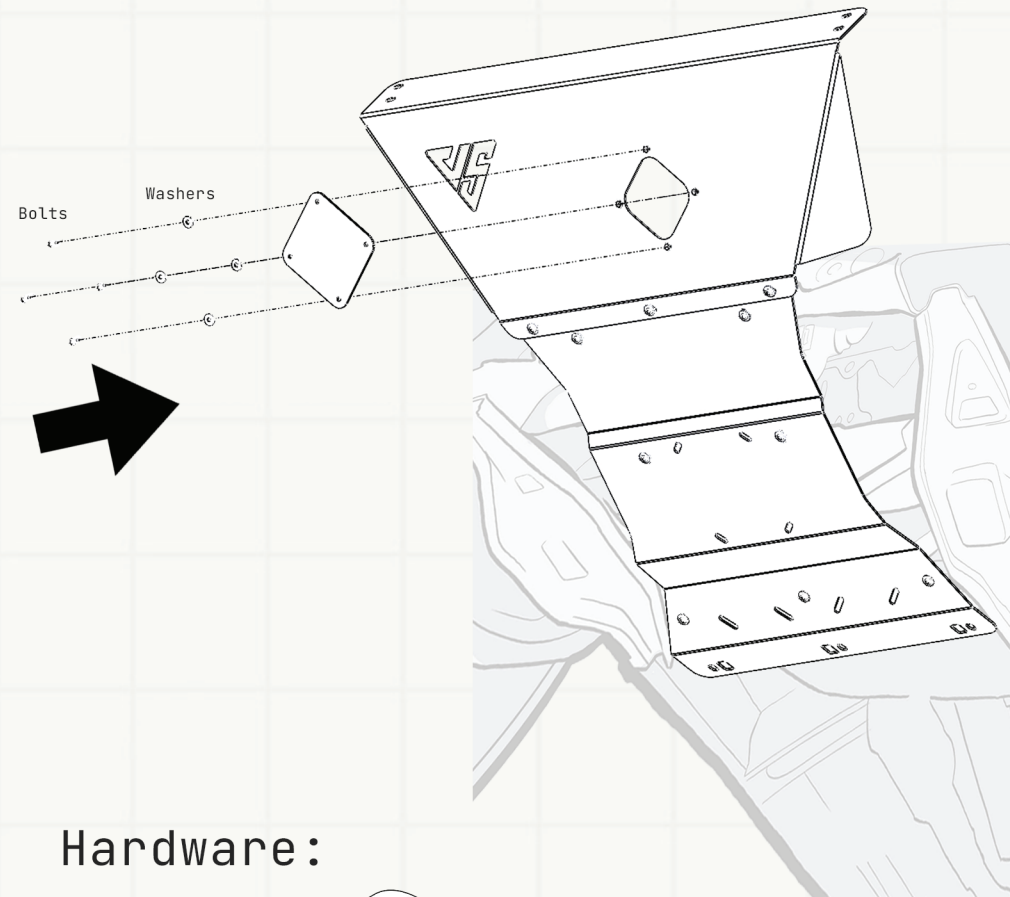


Step 09

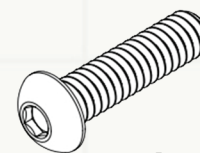


Lastly, Install the Oil Drain Cover to the Front Plate

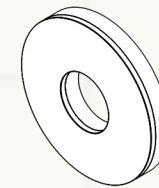
Now that the Front Skid Plate is securely in place on the underside of the vehicle's front end, from the outside facing in, use the (x4) remaining button head bolts w/ the (x4) remaining sealing washers to install the Oil Drain Cover to the correlating opening on the outward face of the Front Plate.



Hardware:



x4



NEOPRENE SIDE
FACES UPWARDS
TOWARDS THE PLATE

x4



You've Reached the Finish Line

