



VAN SPEED SHOP
PROPELLED BY AESTHETIC

INSTRUCTION GUIDE

- AIR COMPRESSOR MOUNT -





PACKING SLIP

COMPONENTS ~

| | | |
|--|---|---|
| ARB TWIN COMPRESSOR KIT | x | 1 |
| VANSPEED COMPRESSOR MOUNTING BRACKET | x | 1 |
| VANSPEED UNDER-HOOD CHUCK MOUNT | x | 1 |
| VANSPEED ROCKER PANEL SEAM CHUCK MOUNT | x | 1 |
| MIDLAND INDUSTRIES ACCESSORY KIT (16 PIECES) | x | 1 |
| MIDLAND INDUSTRIES AIR BRAKE TUBING (50FT.) | x | 1 |

HARDWARE ~

| | | |
|---|---|---|
| 1/2" FLAT WASHERS | x | 4 |
| 5/16" FLAT WASHERS | x | 4 |
| BUTTON HEAD HEX DRIVE SCREWS | x | 2 |
| NYLON-INSERT LOCK NUTS | x | 2 |
| MIDLAND INDUSTRIES TEE BRANCH FITTING | x | 1 |
| MIDLAND INDUSTRIES BULKHEAD UNIONS | x | 2 |
| MIDLAND INDUSTRIES INTERCHANGE COUPLERS | x | 2 |

INSTALLATION PREP

CHECKLIST ~

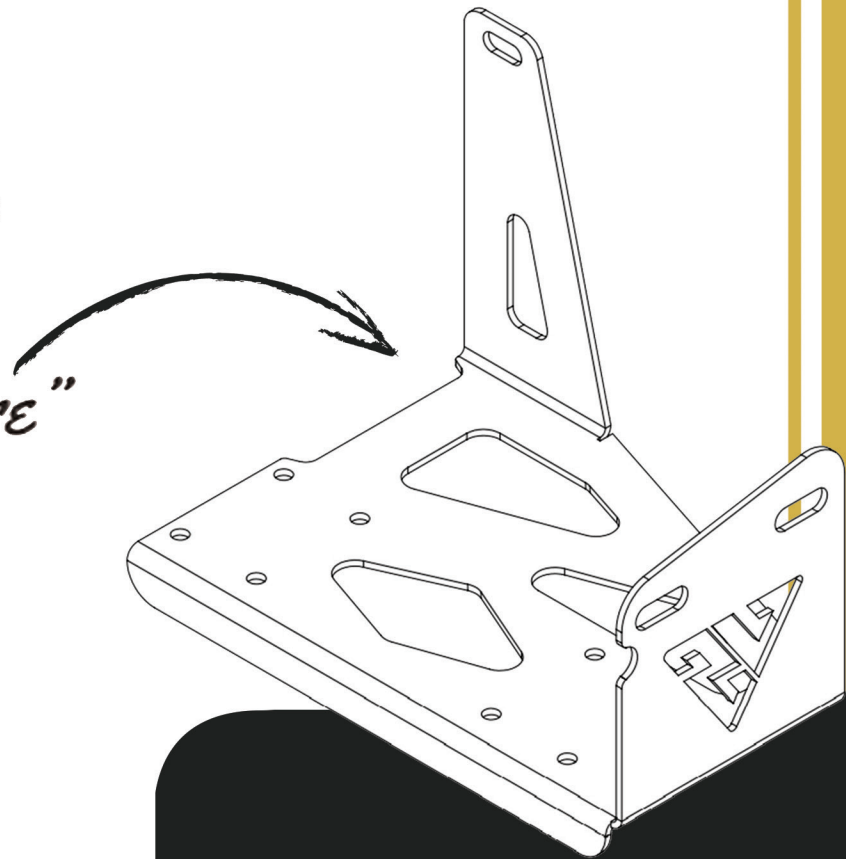
- REVIEW THE PACKING SLIP TO ENSURE THAT ALL OF THE NECESSARY HARDWARE AND COMPONENTS HAVE BEEN INCLUDED WITHIN THE PRODUCT KIT
- PREPARE ALL THE TOOLS & MATERIALS NECESSARY FOR PRODUCT INSTALLATION
- ON THE VEHICLE, MEASURE OUT ALL OF THE DISTANCES AND MOUNTING LOCATIONS FOR THE ASSEMBLED COMPONENTS
- MAKE NECESSARY MARKINGS FOR BOLT HOLES BEFORE MAKING ANY IRREVERSIBLE ALTERATIONS TO THE VEHICLE





AIR COMPRESSOR MOUNT

"Your Adventure Begins Here"



S
T
A
R
T

THE INSTALLATION PROCESS BEGINS WITH THE
AIR COMPRESSOR MOUNTING BRACKET.

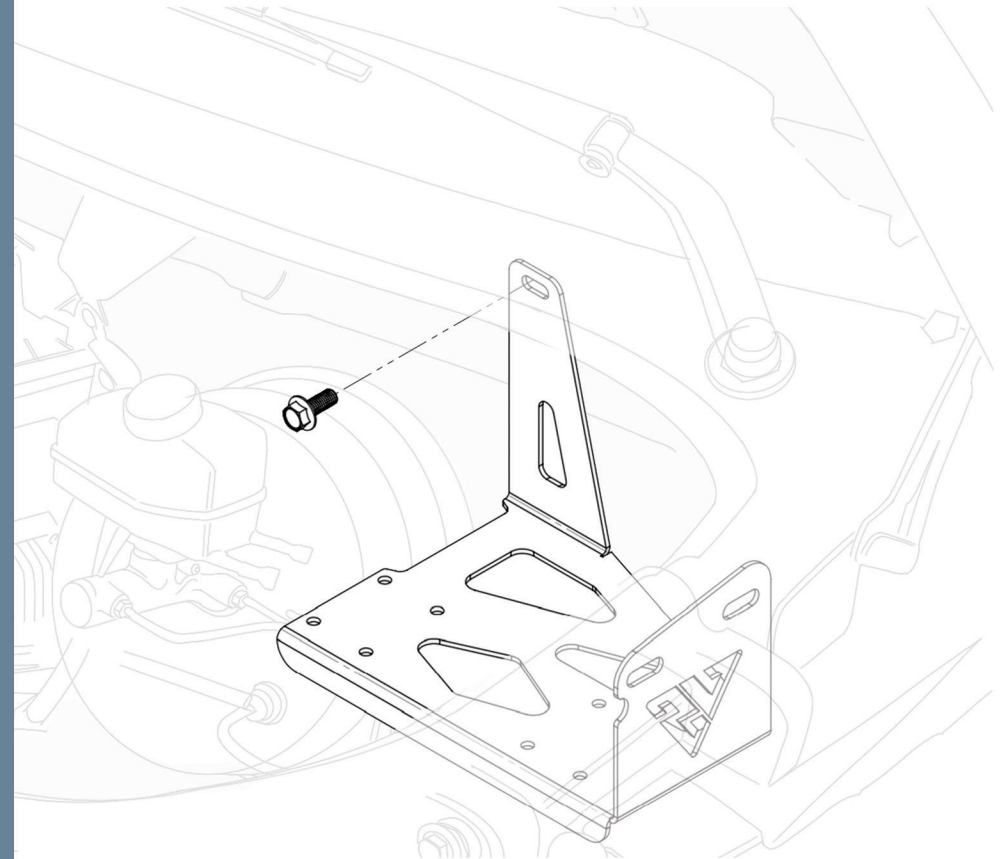


STEP 01

MOUNT THE AIR COMPRESSOR BRACKET IN PLACE ALONG THE FIREWALL

LOCATE THE PROPER CHASSIS BOLT TO BE REUSED ALONG THE TOP EDGE OF THE FIREWALL ON THE ENGINE BAY'S DRIVER SIDE. ONCE UNDONE, BOLT THE CHASSIS BOLT THROUGH THE AIR COMPRESSOR BRACKET TO MOUNT IT INTO PLACE.

NOTE* Offset the bracket slightly to the left to leave clearance for the removal of Hood Hinge Bolts in the following step



HARDWARE



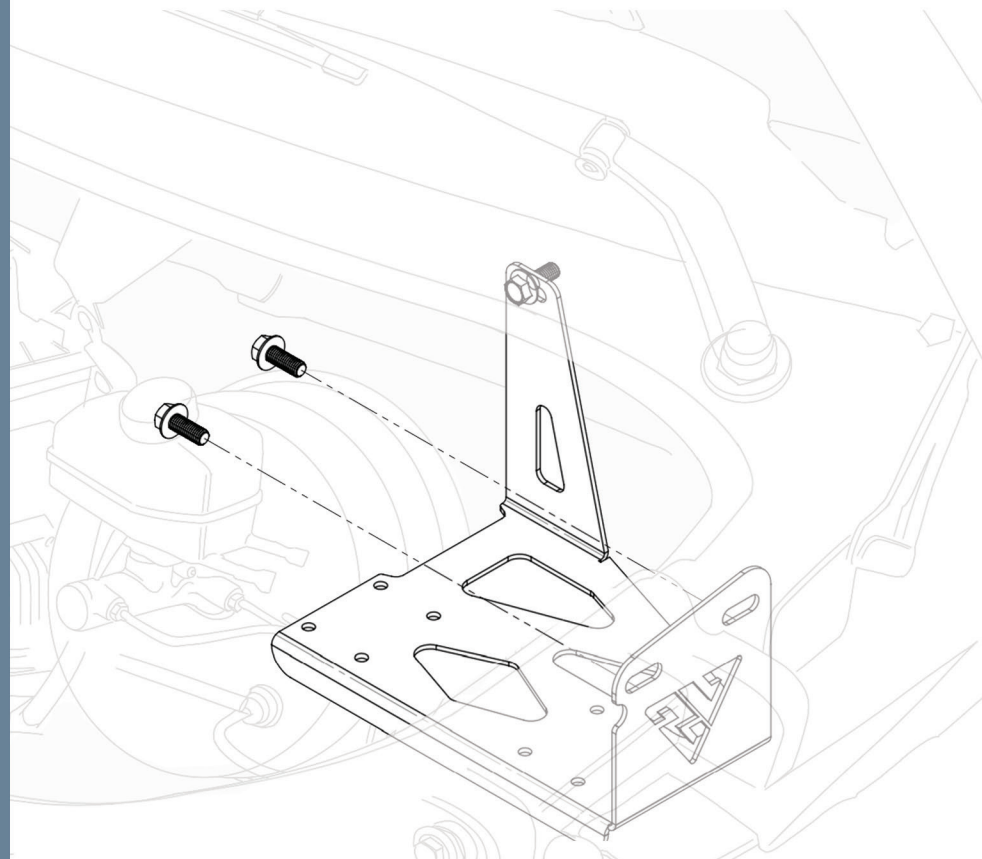
REUSE x1 FIREWALL BOLT

STEP 02

SECURE THE AIR COMPRESSOR BRACKET THROUGH DRIVER SIDE HOOD HINGE BOLTS

ONE AFTER THE OTHER, REMOVE AND REUSE THE DRIVER SIDE HOOD HINGE BOLTS TO FINISH MOUNTING THE AIR COMPRESSOR BRACKET INTO PLACE WITHIN THE UPPER CORNER OF THE ENGINE BAY'S DRIVER SIDE.

NOTE* It may be helpful to have additional support from a friend when removing the hood hinge bolts



HARDWARE

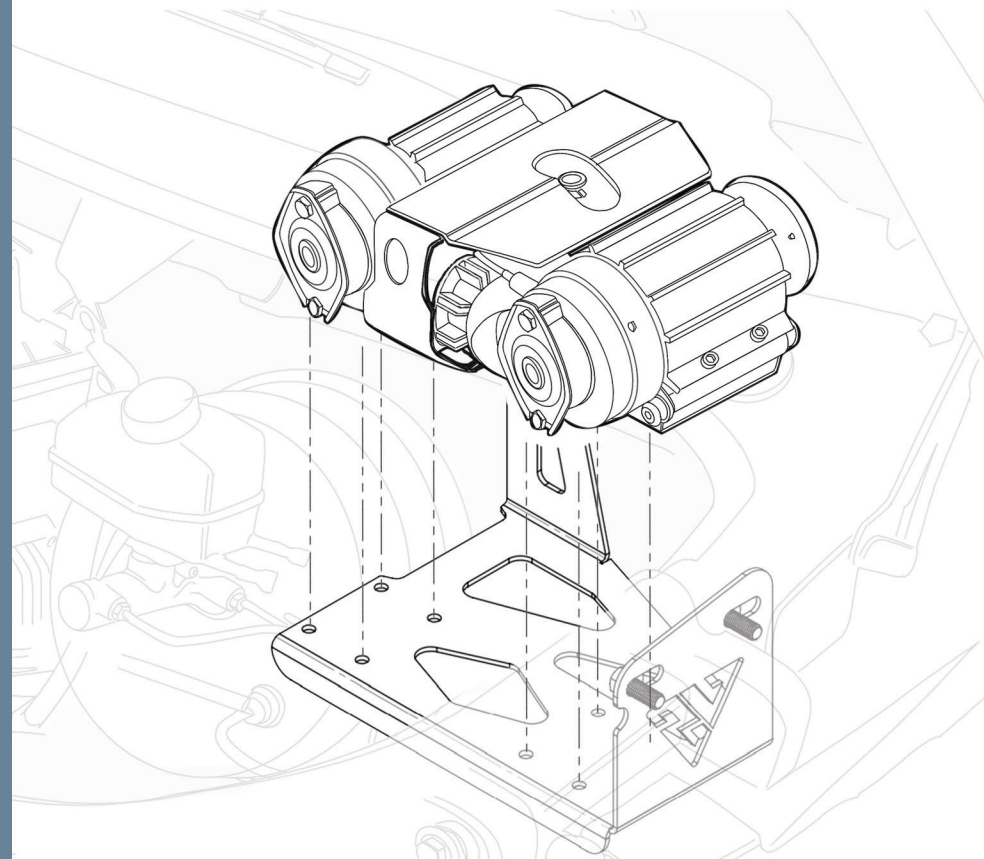


REUSE x2 HOOD HINGE BOLTS

STEP 03

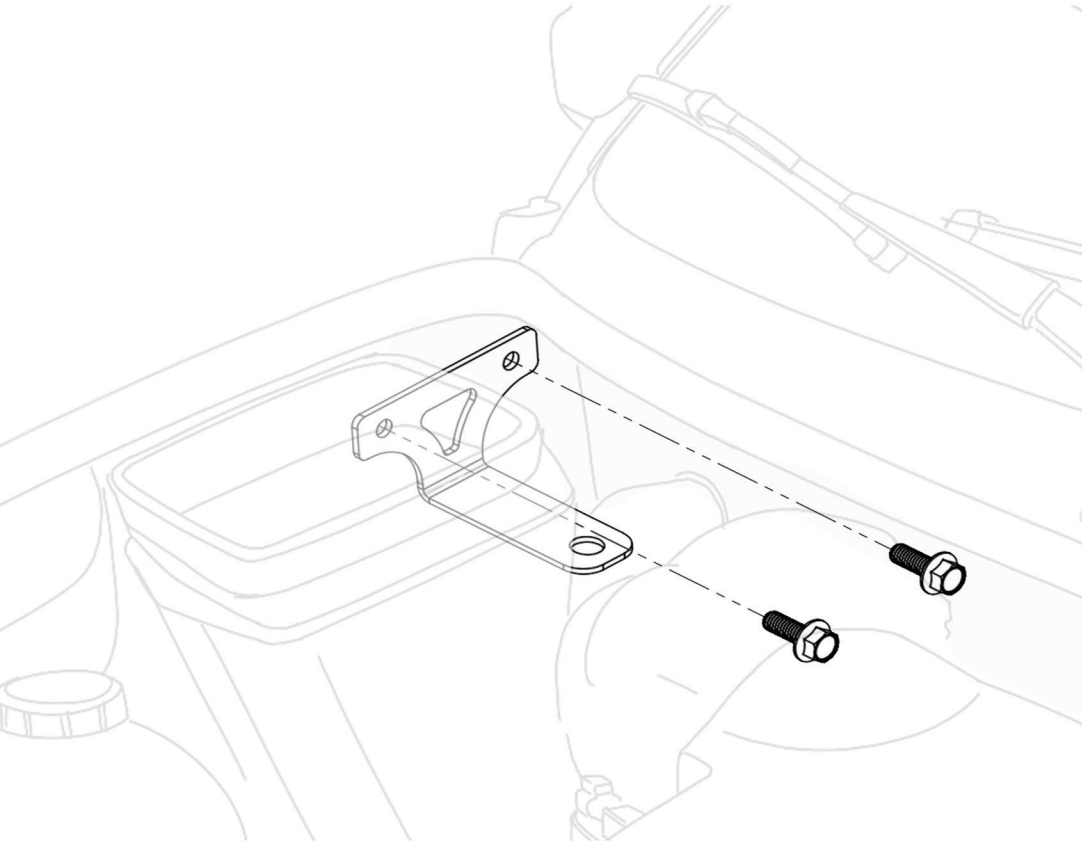
MOUNT ARB TWIN AIR COMPRESSOR TO THE AIR COMPRESSOR MOUNTING BRACKET

USE THE HARDWARE PACKAGED WITH THE ARB TWIN COMPRESSOR KIT TO MOUNT THE COMPRESSOR TO THE INSTALLED AIR COMPRESSOR BRACKET WITHIN THE VEHICLE'S ENGINE BAY.



HARDWARE

USE HARDWARE INCLUDED WITHIN
ARB COMPRESSOR KIT



HARDWARE



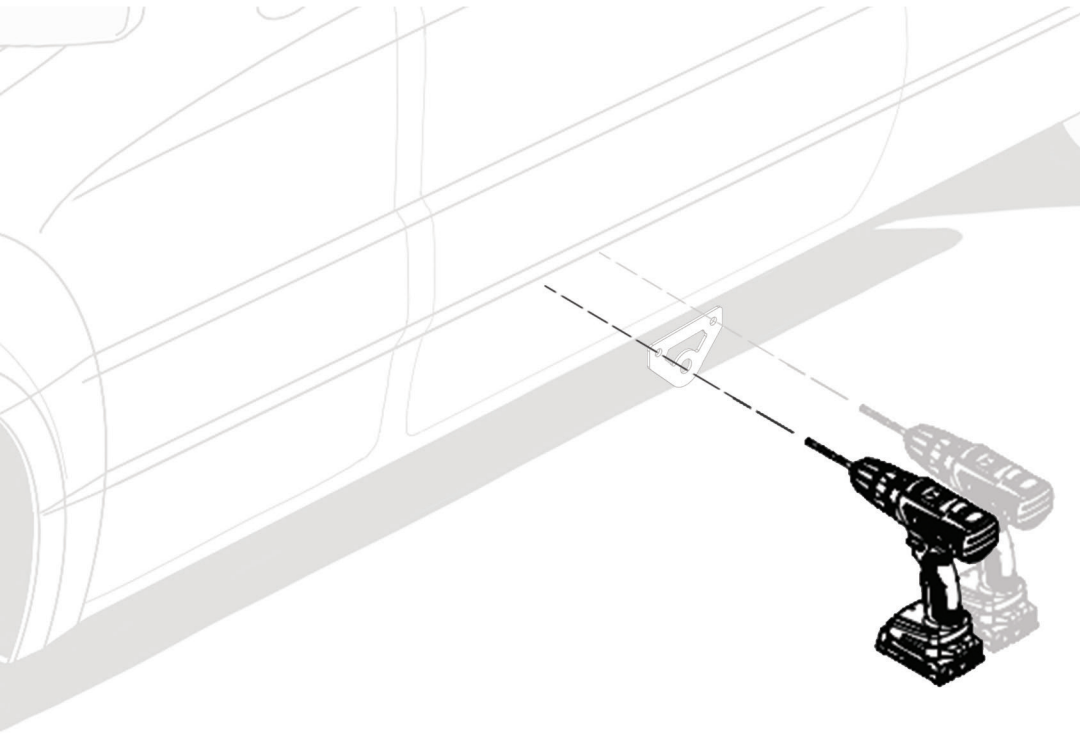
REUSE x2 HOOD HINGE BOLTS

STEP 04

INSTALL UNDER-HOOD CHUCK MOUNT THROUGH THE PASSENGER SIDE HOOD HINGE BOLTS

ONE AFTER THE OTHER, REMOVE AND REUSE THE PASSENGER SIDE HOOD HINGE BOLTS TO INSTALL THE UNDER-HOOD CHUCK MOUNT INTO PLACE WITHIN THE UPPER CORNER OF THE ENGINE BAY'S PASSENGER SIDE.





STEP 05

MARK AND DRILL OUT BOLT HOLES FOR PINCH SEAM CHUCK MOUNT IN THE DESIRED LOCATION

USING THE ROCKER SEAM CHUCK MOUNT AS A REFERENCE FOR BOLT HOLE DISTANCES, MARK AND DRILL OUT (x2) BOLT HOLES ALONG THE LENGTH OF THE VEHICLE'S PINCH SEAM.

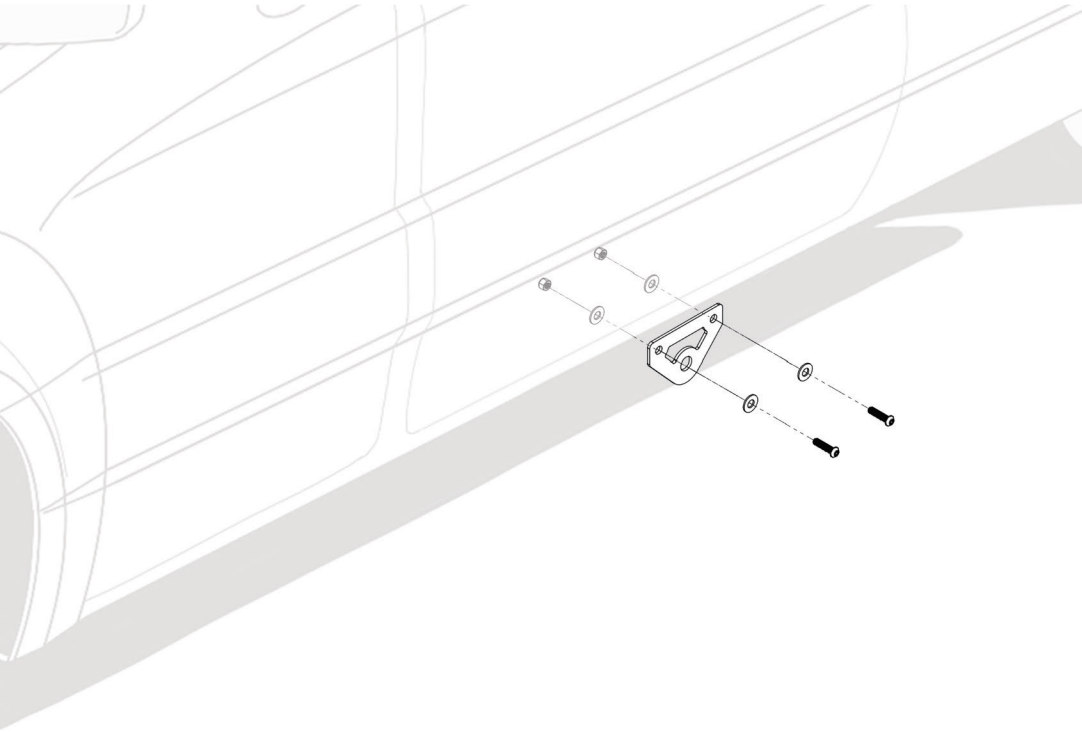
NOTE* Be sure to measure out the length of air brake tubing needed to accommodate your system before drilling into the pinch seam

HARDWARE



x2 HOLES

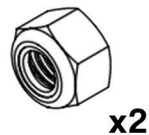
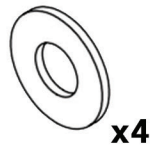
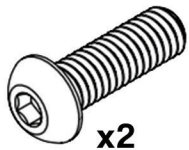




STEP 06

**INSTALL PINCH SEAM
CHUCK MOUNT IN THE
DESIRED LOCATION
ALONG EITHER SIDE
OF THE VEHICLE**

HARDWARE



USE (x2) OF THE HEX HEAD DRILLING SCREWS WITH (x2) OF THE FLAT WASHERS TO INSTALL THE PINCH SEAM CHUCK MOUNT INTO POSITION ALONG THE LENGTH OF THE OUTWARD FACE OF THE PINCH SEAM ON EITHER SIDE OF THE VEHICLE.

NOTE* Indicate markings for bolt holes before making any irreversible alterations to the vehicle





- AIR COMPRESSOR MOUNT -

**INSTALLATION
COMPLETE**



**F
I
N
I
S
H**

