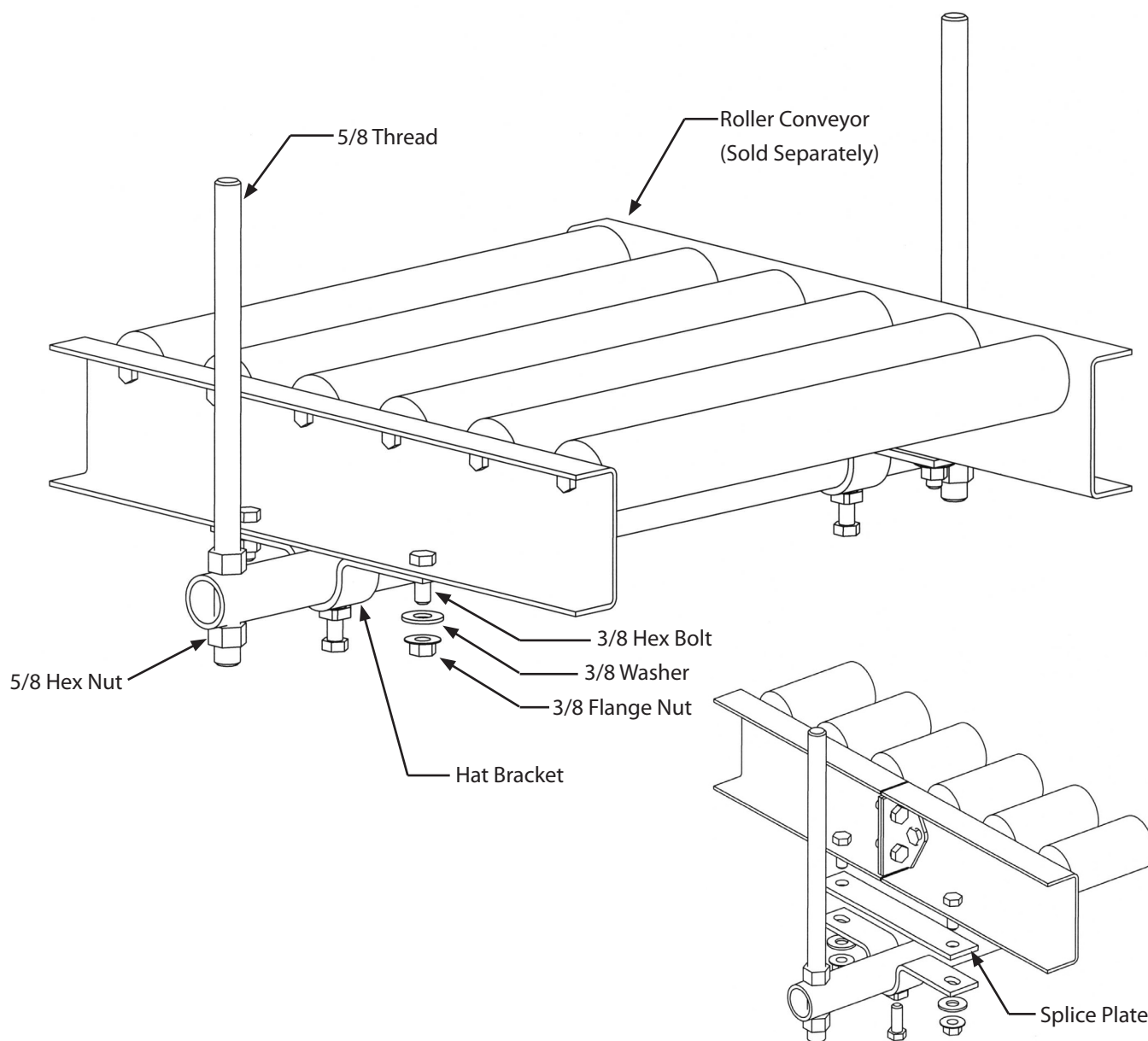


# Ceiling Hanger 1, 250 Lbs. Capacity



Use Splice Plate at conveyor connection

1. Do not exceed capacity of 1,250 pounds per hanger.
2. Install 5/8 all thread and crosspipe using 5/8 nuts.
3. Place conveyor on crosspipe and attach with Hat Bracket and 3/8 hardware.
4. Use Splice Plate at conveyor connections.
5. Securely tighten all hardware.
6. Conveyor side guards are strongly recommended for overhead applications.