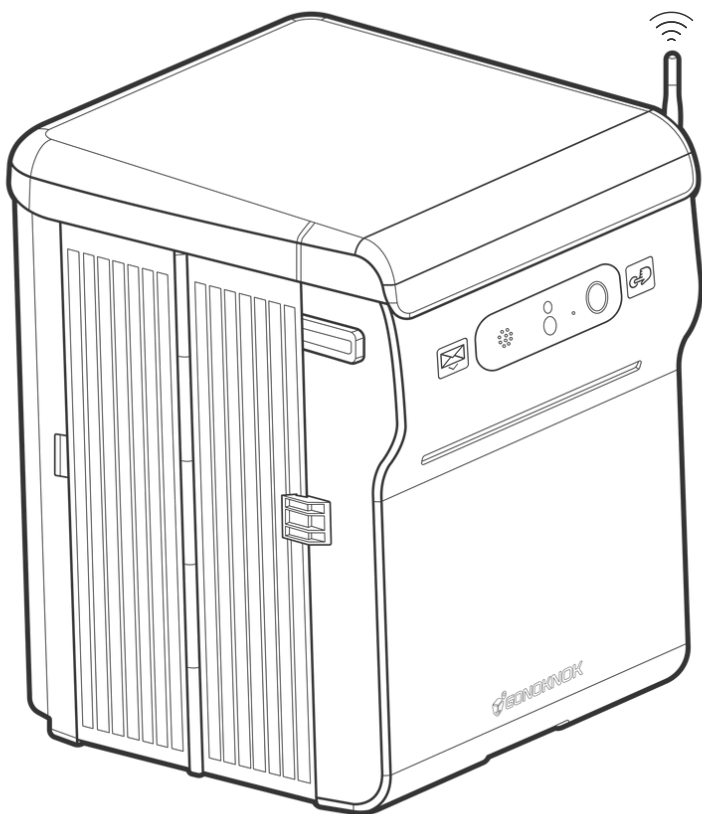
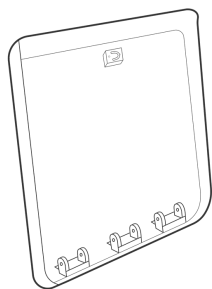




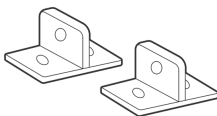
GO NOKNOK INSTALLATION GUIDE



What you'll receive



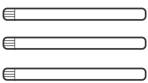
GO NOKNOK Lid



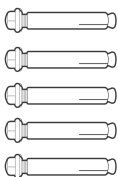
Metal Brackets 2x



Pins 2x



Lid Metal Rods 3x



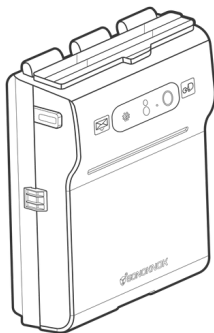
Metal Wall Plugs 5x



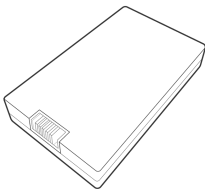
Washer I 5x



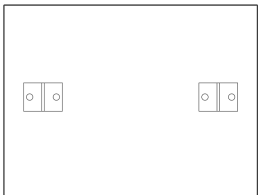
Washer II 5x



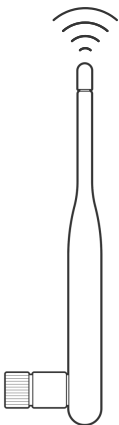
GO NOKNOK Device



Battery



Brackets Guide

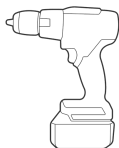


Wi-Fi Antenna



Metal Rod

Tools you'll need



Drill



Drill Bit 10 mm



Spirit Level

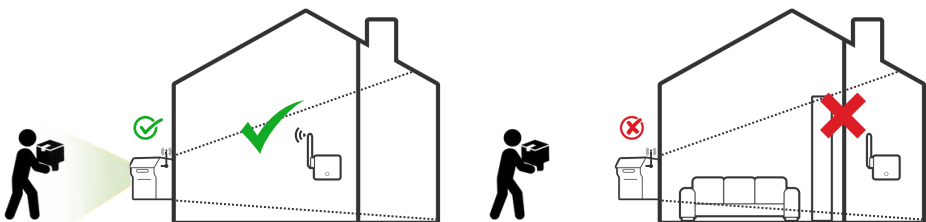


Marker

Mounting

- 1 |** Before installation please check that the device location is in range of your Wi-Fi router, this should be between 25-30 feet. (8-9 meters)
- 2 |** First make sure that the device will be mounted on a level surface before drilling into the wall. Use a spirit level and the Bracket Guide to ensure the holes are drilled in line.
- 3 |** Align your two brackets or use the provided A4 Bracket Guide to mark where the holes line up.
- 4 |** Drill 5cm deep holes into the wall where you marked the brackets.
- 5 |** Insert the expandable metal plugs and bolts into the wall.
- 6 |** Place washer I and washer II on each one of your bolts and secure the brackets using the screw. (Please refer to Assembly Kit for details)
- 7 |** Mount your GO NOKNOK onto the metal brackets by putting them through the openings on the back of the box.
- 8 |** Temporarily insert the metal rod through the two brackets inside of the GO NOKNOK. (Please refer to Assembly Kit for details) and mark the third hole from inside of the box.
- 9 |** Remove the metal rod and safely keep the box aside then drill 5cm deep holes into the wall where you marked the third hole.
- 10 |** Remount your GO NOKNOK onto the metal brackets by aligning the openings on the back of the box with the brackets, then insert the metal rod through the two brackets inside the GO NOKNOK. (Please refer to the Assembly Kit for details.)

Ensure Wi-Fi router is in clear range



Mounting

11 I Secure the rod by inserting the two pins into the holes at either end, then finalise the GO NOKNOK position by fitting the final bolt into the third hole.

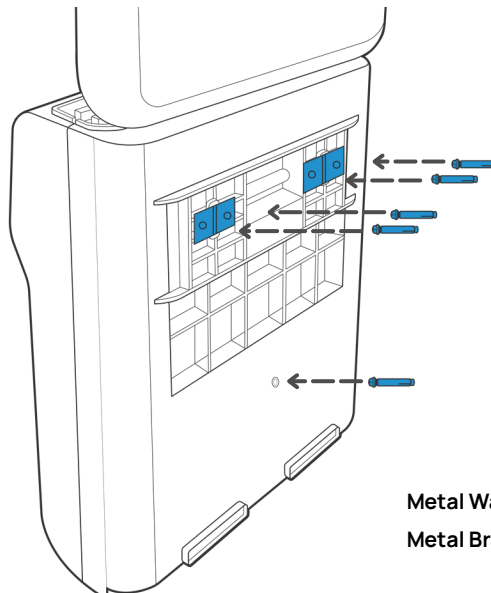
12 I Slide the GO NOKNOK lid onto the top of your box aligning the hinges to leave an opening for the rods. (Please note initially you may need to press down hard on the lid for locking, gradually after use the lid will lock swiftly)

13 I Use the lid metal rods to secure the two together as per diagram. Note that the left hinge is inserted right to left, while the middle and right are inserted left to right. (Please refer to Assembly Kit for details)

14 I Secure the Wi-Fi Antenna to the GO NOKNOK device by attaching it to the antenna port on the right side. Rotate clockwise until it's steady. (Please refer to Assembly Kit for details)

15 I Charge the battery for 5 - 6 hours using a C-Type cable, when the light turns blue the battery is fully charged. Insert the battery into the compartment inside of the box. (Note that the C-Type cable is not included in your GO NOKNOK box)

Fitting Wall Mounting Screws



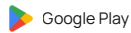
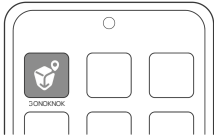
Metal Wall Screws 5x

Metal Brackets 2x

Setting Up: Get Started

1 | Download and Install the GO NOKNOK App

- Search for "GO NOKNOK App" in your device's app store or scan the QR code
- Download and install the app on your smartphone.



2 | Create an Account or Log In

- Open the GO NOKNOK App.
- Register new account (I) if you don't have one or Sign in with your credentials (II)

I.

The screenshot shows the registration screen of the GO NOKNOK app. It features the app's logo at the top, followed by input fields for "Full Name*", "Email Address*", "Phone Number*", and "Password*". Below the password field is a "Confirm Password*" field. A note specifies: "At least 8 characters, with uppercase, lowercase, a number, and a symbol." Below these fields is a dropdown menu for "Where did you purchase your Gonoknok?" with the option "Please select one option". At the bottom, there is a blue "Create Account" button, a link for "Already have an account?", and a "Login" button.

II.

The screenshot shows the login screen of the GO NOKNOK app. It features the app's logo at the top, followed by input fields for "Email Address*" and "Password*". A "Forgot password >" link is located below the password field. At the bottom, there is a grey "Login" button, an "or" separator, and a "Register Account" button. The version number "1.0.0.29038441" is displayed at the very bottom.

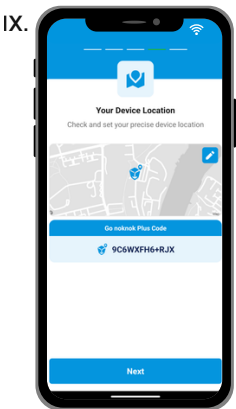
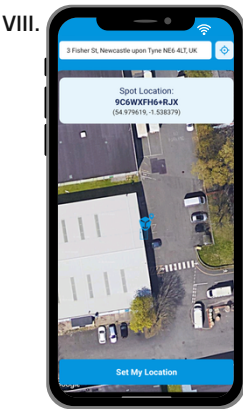
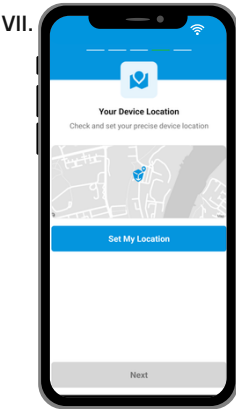
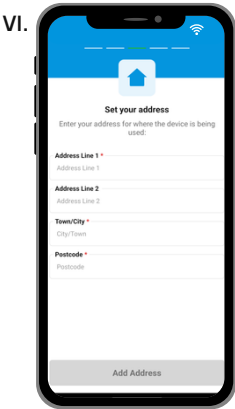
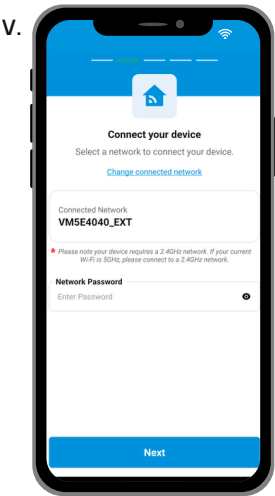
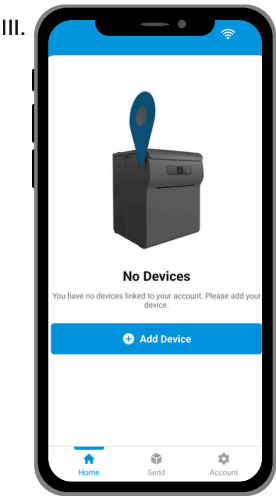
3 | Power On Your GO NOKNOK Device

- Insert the battery in GO NOKNOK to turn on the device.
- The device enters pairing mode, indicated by a blinking LED light and voice instructions.

Setting Up: Get Started

4 I Next, follow the step-by-step instructions in the GO NOKNOK App to get everything connected. (Screenshots included below)

5 I Make sure to connect to a (2.4GHz) Wi-Fi network. (V)

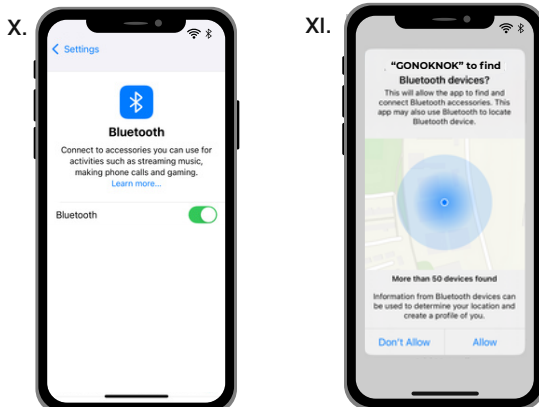


6 I Click **Next**, and follow the **Best Method** to connect with your GO NOKNOK device.

Setting Up: via Bluetooth Best Method

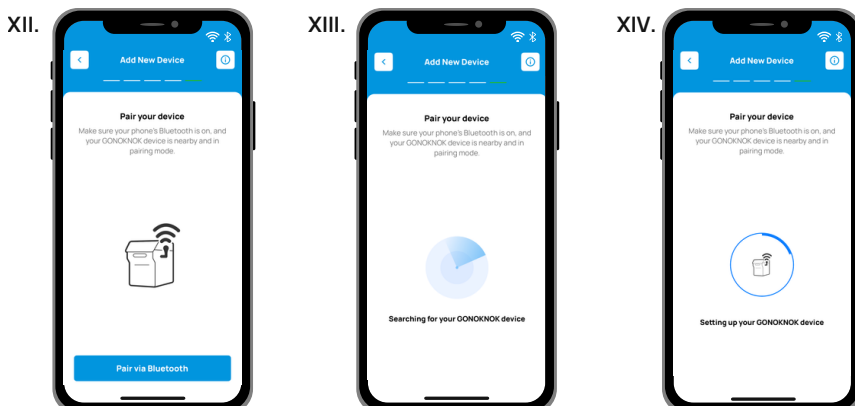
7a | Enable Bluetooth on Your Phone

- Go to your phone settings and turn on Bluetooth.
- Ensure Bluetooth pairing is allowed for nearby devices.
- Next, go back to the GO NOKNOK App and follow the on-screen prompts.



8a | Add Your GONOKNOK Device via Bluetooth

- Tap the "Pair via Bluetooth" button to begin scanning for the GO NOKNOK device. (XII)
- The GO NOKNOK App will automatically scan for available Bluetooth devices in pairing mode.



Setting Up: via Bluetooth Best Method

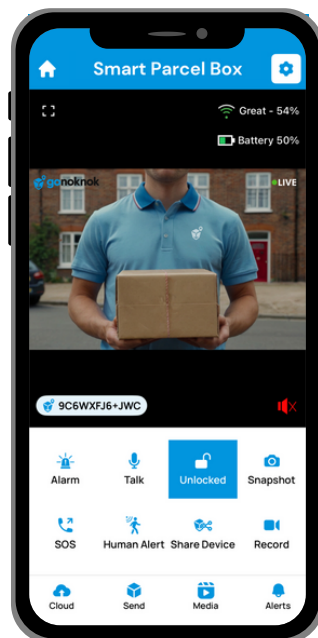
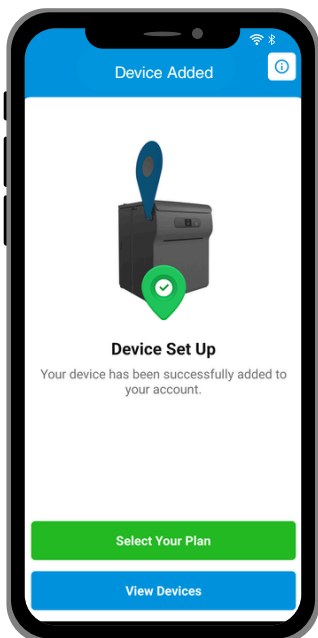
9a | Complete the Connection Setup

- Once successfully connected, the GO NOKNOK device will confirm the pairing by voice note.
- Next, you can now select a plan to unlock more advanced features or view your device.

Note: Ensure your phone has been granted Bluetooth permissions for successful pairing.

Your GO NOKNOK device is now successfully connected and ready to use!

XV.

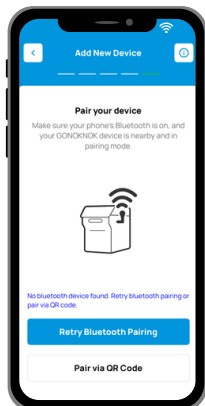


Setting Up: via QR Code Alternate Method

7b | If Bluetooth connection fails or your GO NOKNOK device isn't discovered in the app, ensure Bluetooth is enabled on your phone and is allowed to discover new devices.

8b | Alternatively, tap the "Pair via QR Code" button to complete setup using the QR code method. (XVI)

XVI.



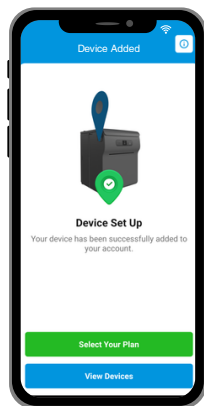
XVII.



XVIII.



XIX.



XX.



9b | Next, Scan the QR code on the next screen (XVIII) for 5 seconds to link your device.

10b | Now you can select a plan to unlock more advanced features or view your device.

Your GO NOKNOK device is now successfully connected and ready to use!

Security & Access



Siren / Alarm

Triggers a loud siren to deter intruders.



SOS Button

One-tap instant emergency assistance.



Unlimited Cloud Storage

Auto-save & record videos to cloud and access them anytime.



Remote Lock/Unlock

Send, Return, Receive remotely.



Up to 5 Accounts

Share device access with family, partners & flatmates.

Monitoring & Support



Live HD Streaming

Real-time video & audio from anywhere.



Motion-Detection Alerts

Real-time notifications & auto HD video recordings.



Two-Way Talk

Speak directly with visitors from your phone.



Snapshot Capture

Take photos of the live video feed.

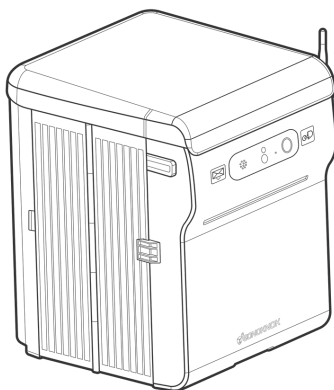


Human Alert

Get notified when a person is detected.

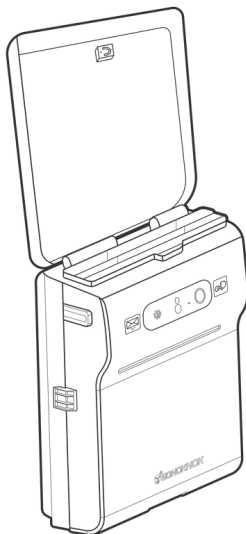
Expanding Box

To expand the box, pull the front of the GO NOKNOK which will open the folded side panels. Pull the two plastic latches along the top to prevent the side panels from folding/collapsing back in place and open up the floor panel on the bottom.



Expanded

To collapse, pull the release mechanism on the floor panel and slide the latches back to collapse the side panels.



Collapsed

Thank you!

For choosing GO NOKNOK as your secure and smart parcel box

If you'd like assistance with installation or first setup, we're here to help—just reach out to us at hello@gonoknok.com or chat with us on our website at www.gonoknok.com

YouTube



Scan to visit our YouTube channel

Website



Scan to visit our website for tutorial videos on our Guide Hub page

Did you know?

You can now order a Hanging Post and Spare Battery for your GO NOKNOK from our website.

The Hanging Post is perfect if you don't have wall space at your front door, providing a secure, flexible mounting option. Plus with a Spare Battery, you'll ensure continuous operation without interruptions.

