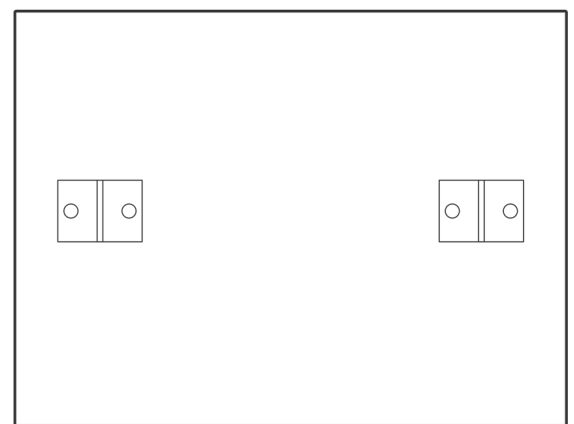


Installer Guide

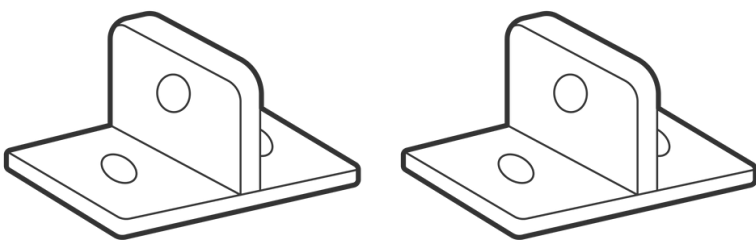
Setup Parts

The following parts are provided inside the Gonoknok package

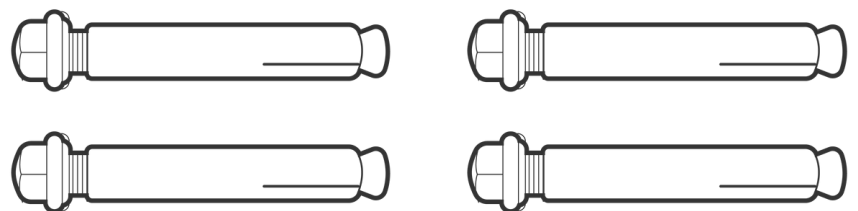
- 1 Brackets Guide



- 2 Brackets



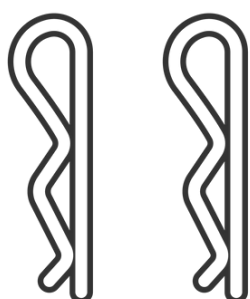
- 4 Metal Wall Plugs



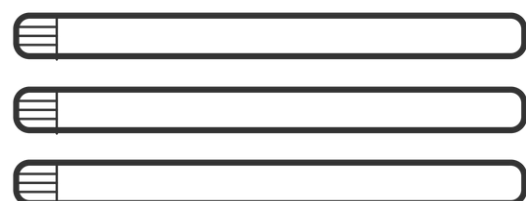
- 1 Metal Rod



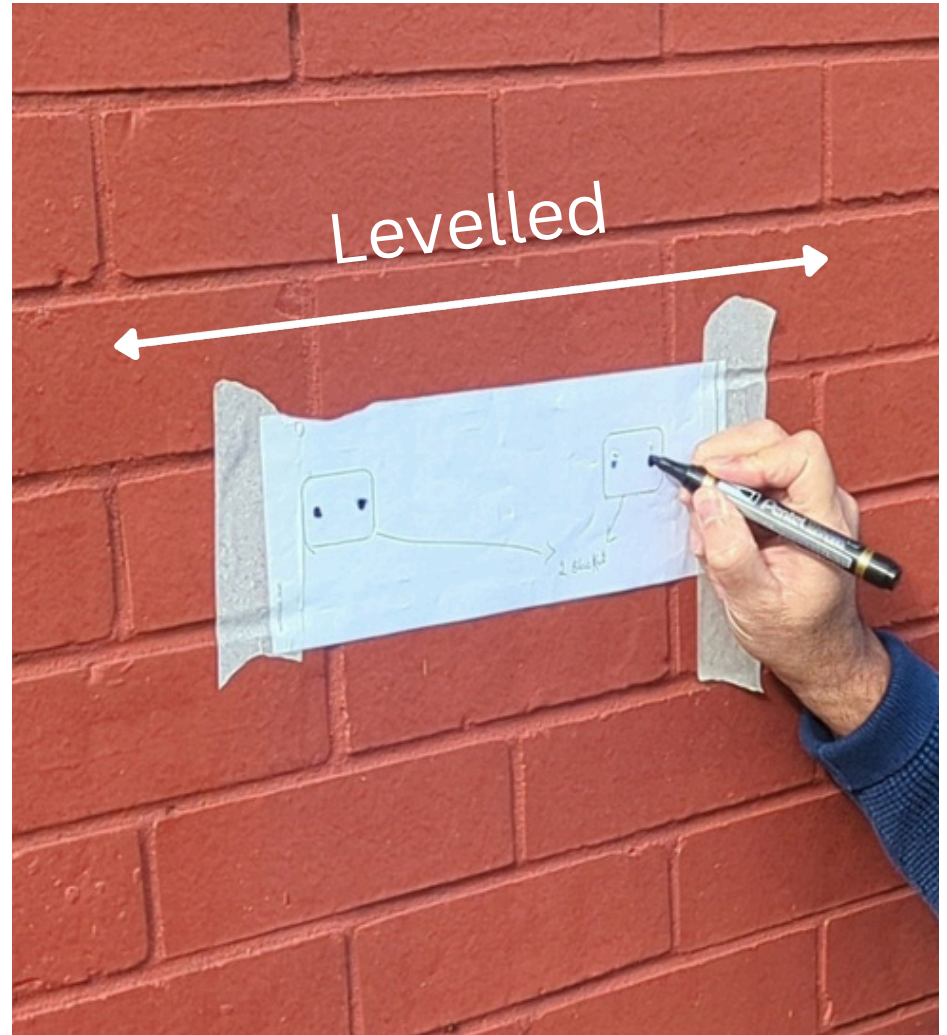
- 2 Pins



- 3 Lid Metal Rods



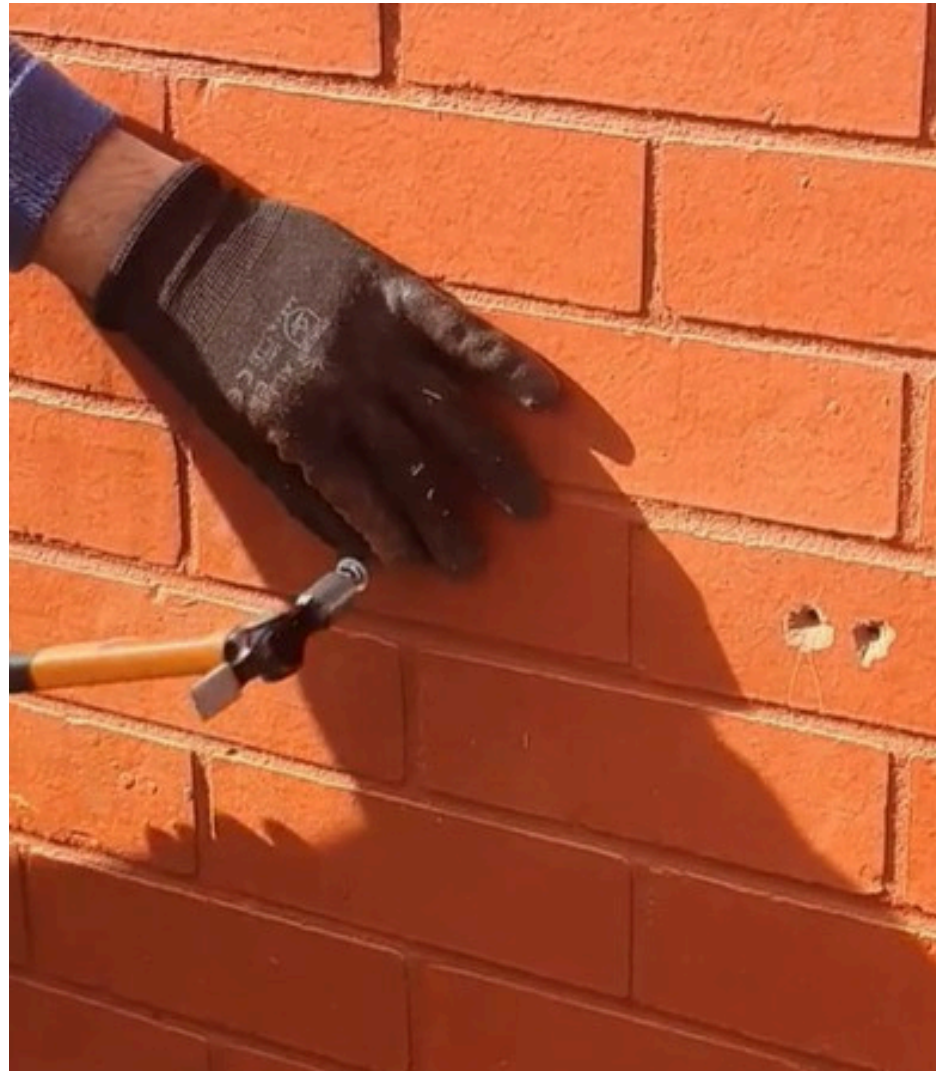
1. Use the brackets guide to mark where you want your Gonoknok to sit. **Please make sure the bracket guide is completely levelled on the wall!**



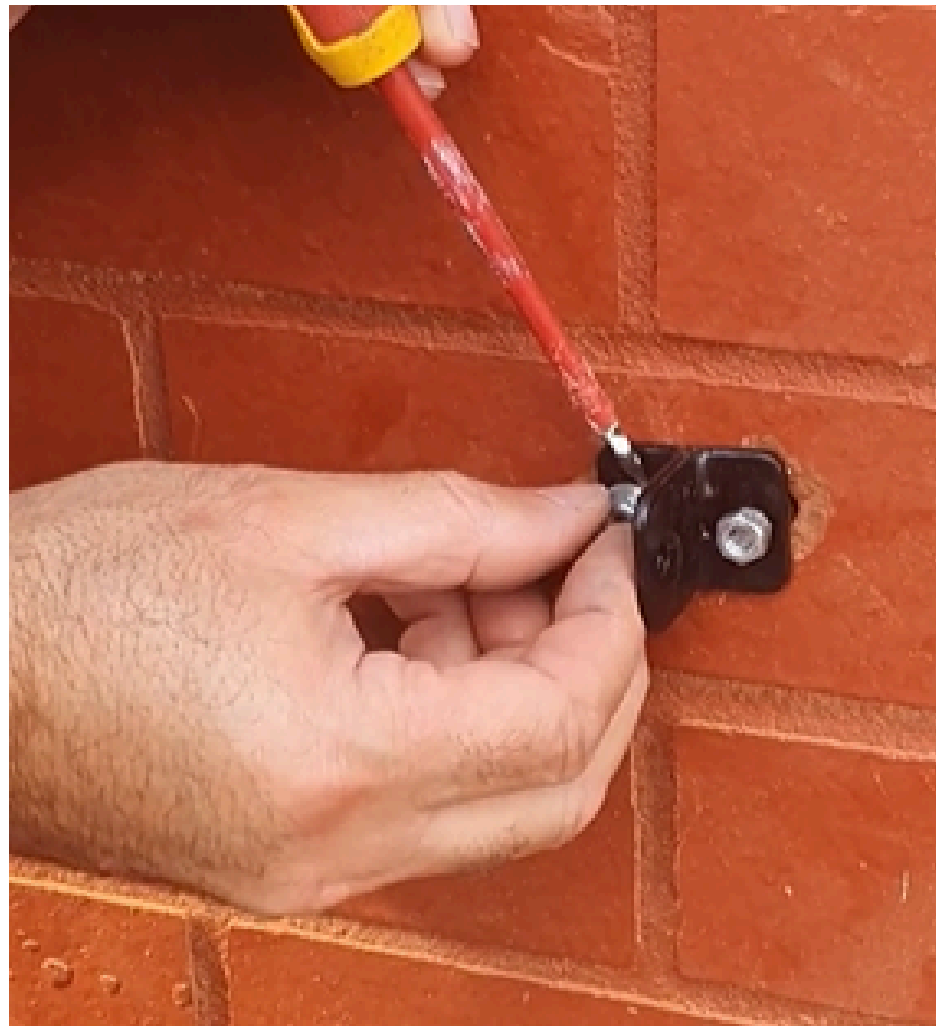
2. Drill holes exactly where you have marked using the bracket guide.



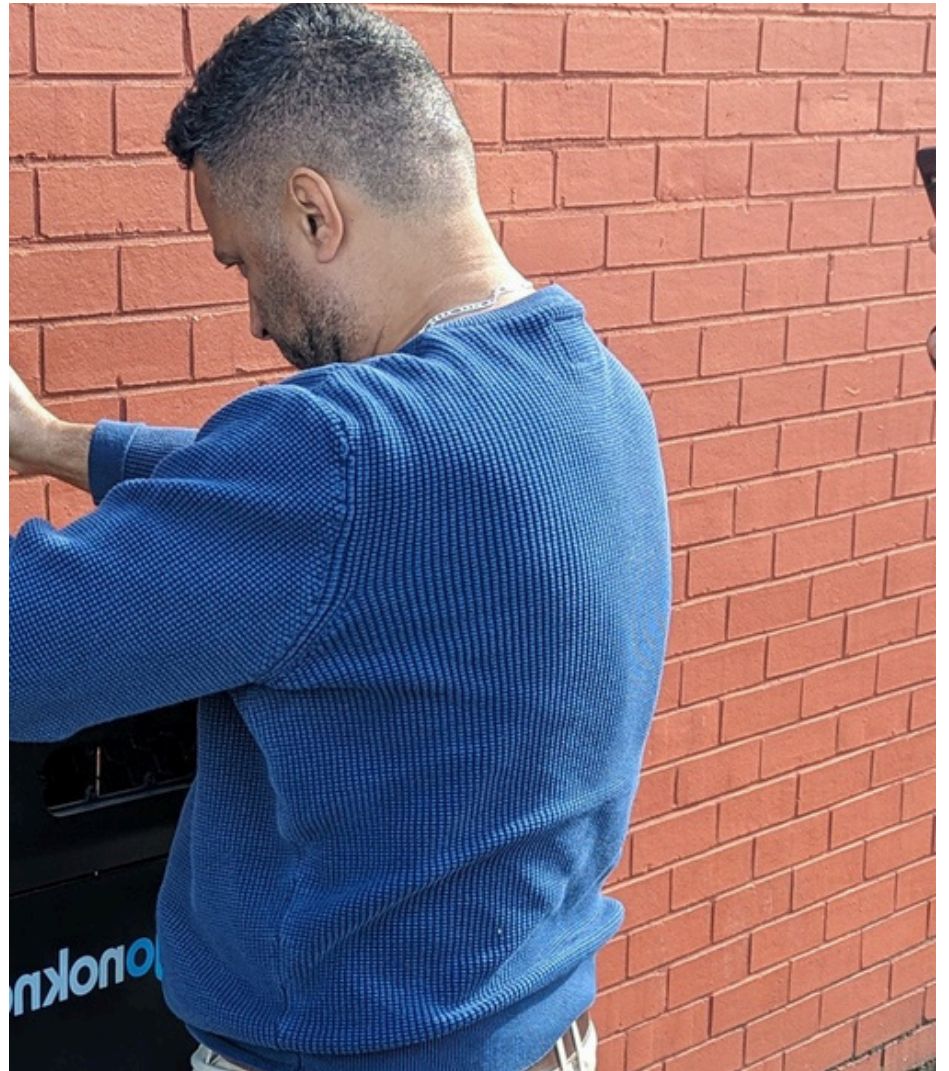
3. Insert the metal plugs into the holes you made.



4. Secure the metal plugs using the washers then fix brackets to the wall using the screw.



5. Align the device up to the metal brackets through the openings on the back of the box.



6. Then put the two pins through the holes on either end of the rod.



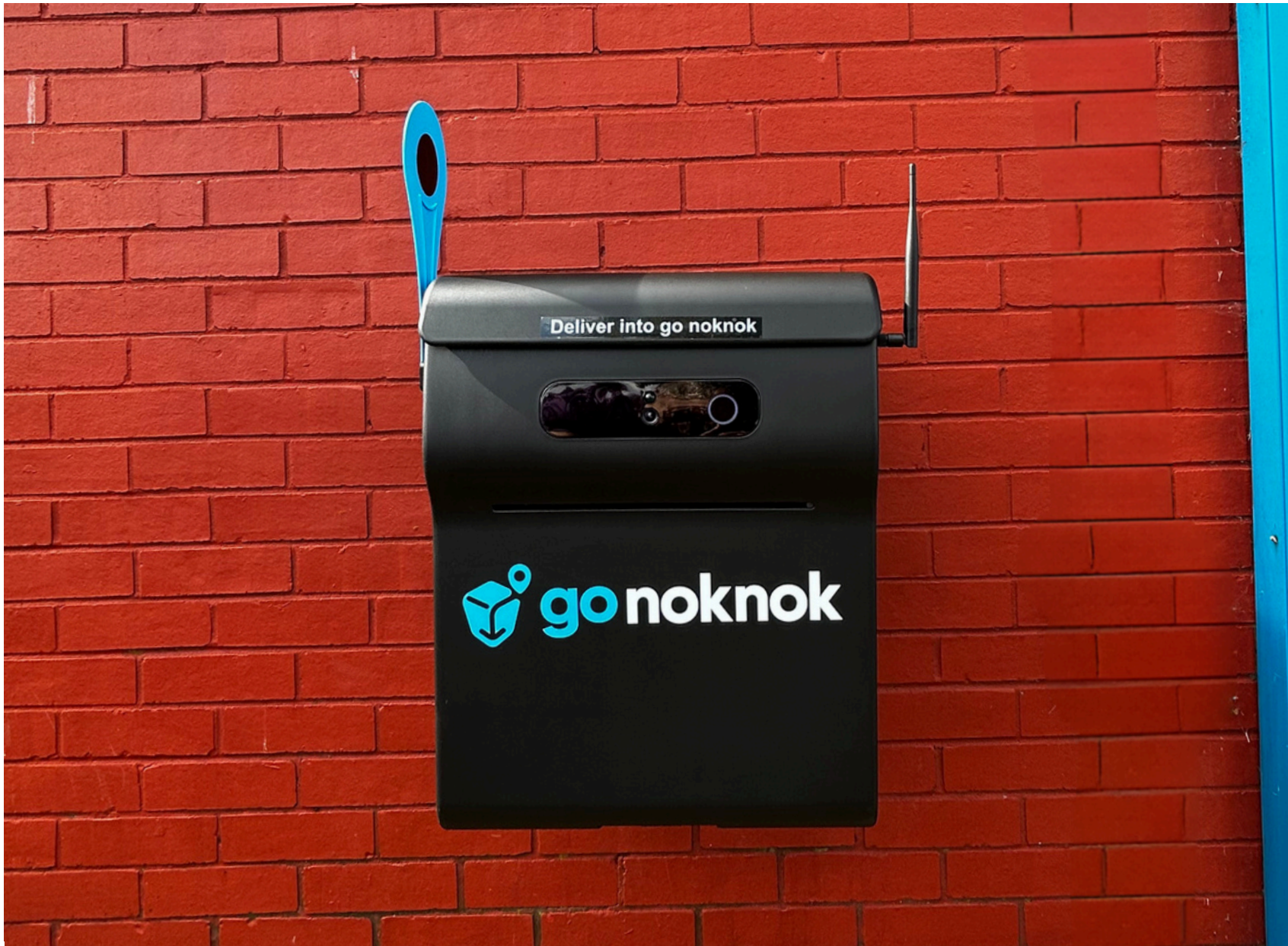
7. Find the External Antenna and attach it to the outlet on the left hand side of the device.



8. Screw the antenna clockwise until it is fitted correctly. Turn the antenna so that it is pointing upwards.



7. Your Gonoknok Smart Parcel Box is now mounted securely!



Please head to the following links and watch our helpful installation videos

Guide #11 Installing your Gonoknok onto a wall

<https://www.youtube.com/watch?v=sJvgrvGmAOU>

Guide #12 Extending and collapsing your device

<https://www.youtube.com/watch?v=ormsgCshkd58>

Guide #31 External Antenna

<https://www.youtube.com/watch?v=t78kgbcNjRA>