



<b>Volkswagen Crafter &amp; MAN TGE from m.y. 2017</b>			
<b>Protection plate engine Desert plus</b>			
Nummer:	1461 0011	Stand:	08.2021
Revision:	03	Sprache:	EN

## Installation guide 1461 0011

### **This installation guide applies to this part n°/description:**

- 1461 0011 Volkswagen Crafter & MAN TGE from model year 2017 onwards – Protection plate engine „Desert plus“
- 1461 0018 Volkswagen Crafter & MAN TGE from model year 2017 onwards – Protection plate engine „Desert plus“ MAR

**Please also have the installation guide 1461 0027 ready for the pre-assembly of the rear transverse bar.**

If not on hand, you can download it here: [www.seikel.de/einbauanleitungen](http://www.seikel.de/einbauanleitungen)



<b>Volkswagen Crafter &amp; MAN TGE from m.y. 2017</b>			
<b>Protection plate engine Desert plus</b>			
Nummer:	1461 0011	Stand:	08.2021
Revision:	03	Sprache:	EN

## Important

**To ensure proper function and optimal quality of our parts, their installation must be done in accordance with this installation guide and according to Volkswagen manufacture's specifications in a professional workshop. SEIKEL GmbH and its employees shall not be responsible for damage and its consequences of any nature, which are caused due to non-observance or ignorance of these guidelines. Warranties shall be void for incorrectly performed installations.**

*In order to maintain driving safety and functioning of all moving and electrical parts, we recommend keeping the vehicle underbody free of heavy contaminations.*

*For this purpose, the existing protection plates of the vehicle underbody (e.g. engine, gearbox, tank and rear axle) also need to be dismantled. A regular cleaning is recommended in this case, e.g. at the end of winter, on and after every use in difficult terrain with e.g. mud, sand/gravel and water-crossings.*

## Installation guide

Please refer to the Volkswagen instructions for the exact working steps as well as the tightening torques. In case of deviation, our specifications shall be applicable.

## NOTE!

**All the drill holes and breakthroughs must be deburred from both the sides. Metal swarfs are to be removed / vacuumed up immediately, and it has to be ensured that no swarfs fall into the hollow space in the body!**

**Apply paint (as per current valid VW repair manual "Paint", refer to ELSA):**

1. Apply wash primer and allow it to dry in accordance with the item description. A hot-air dryer can be used, if necessary. We recommend: 1k Wash primer LLS MAX 106 M2.
2. Apply filler and allow it to dry in accordance with the item description. A hot-air dryer can be used, if necessary. We recommend 2K-HS filler LLS MAX 202 M2.
3. Apply base coat on visible areas based on the vehicle-specific varnish and allow base coat to dry in accordance with the item description. A hot-air dryer can be used, if necessary.
4. Protect all cutting edges, hollow spaces or drill holes additionally with anti-corrosion wax, if required using a small brush. We recommend transparent preservative wax AKR 321 M 15 4.



### Parts list

- 1x protection plate engine
- 1x transverse bar front
- 1x counterholder
- 2x M12x55 hex collar screw
- 9x M8x35 hex screw and washer assembly
- 4x M5x16 Torx-tapping screw
- 3x M8 rivet nuts
- 4x clamping nut
- 3x M6x25 hex screw and washer assembly
- 2x M6x20 lens head screw



### Recommended special tools

Rivet nut pliers



## Instructions

If available, dismount the sound insulating tray from the engine. Then dismount both the M12 screws that connect the radiator support to the assembly carrier on the left and right.

**These screws may not be re-used in any case.**

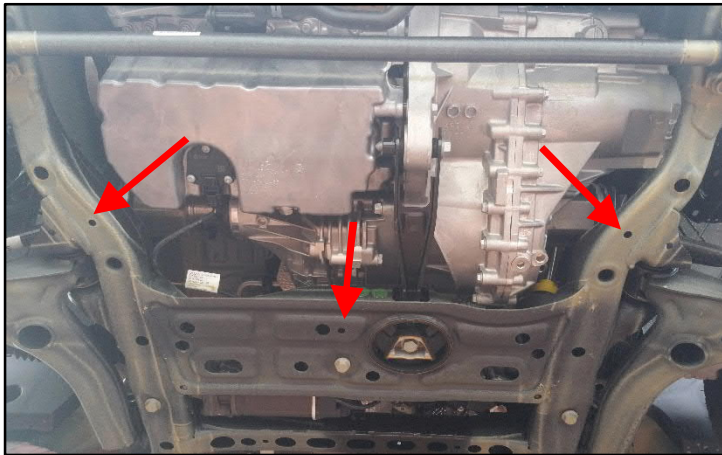


Join the transverse bar provided in the delivery from front at the bottom to the assembly carrier and tighten using the hex collar screws M12x50 provided in the delivery on the left and right.



Using a gearbox jack, press the assembly carrier upwards and then tighten the hex collar screws M12x50 as per Volkswagen manufacturer's specifications using 70 Nm and turn 90° further.

**In case of a possible disassembly, these screws must be replaced. (Volkswagen Original part no.: N 106 611 01)**



On the image, the 3 fixing points of the protection plate are marked on the assembly carrier: the 3 rivet nuts provided in the delivery are inserted here.



Insert the 3 rivet nuts M8 provided in the delivery in the designated holes of the assembly carrier and rivet.



Mount the 4 clamping nuts provided in the delivery on the left and right of the wheel housing liners, as shown in the image.



Temporarily fix the protection plate and mark the position of the front 3 holes on the bumper. Then dismount the protection plate again.



Hold the counterholder provided in the delivery, as shown in the image, on the bumper and align the 3 holes in the counterholder to the markings on the bumper.

After the alignment, mark both the holes of the fishing plate on the bumper.



Drill the front 3 marked points on the bumper with a 10 mm drill machine. Drill the rear two markings with 8 mm drill.



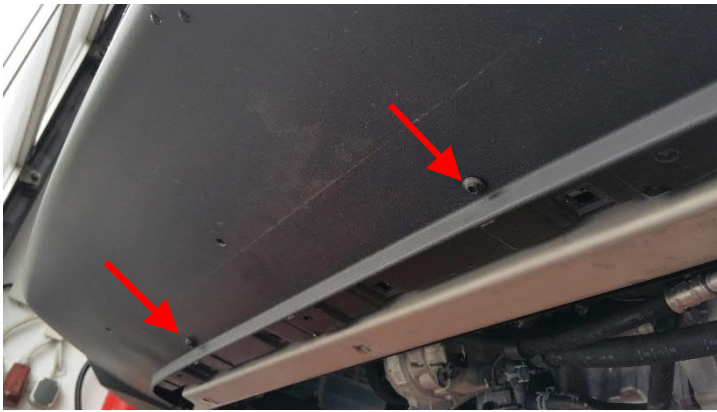
All the 5 drilled holes in the bumper must be deburred.



Loosen the fixing clips of the bumper on the crossbar below the cooler.



Move the counterholder with the chamfers upwards behind the bumper and align to the earlier drilled holes.

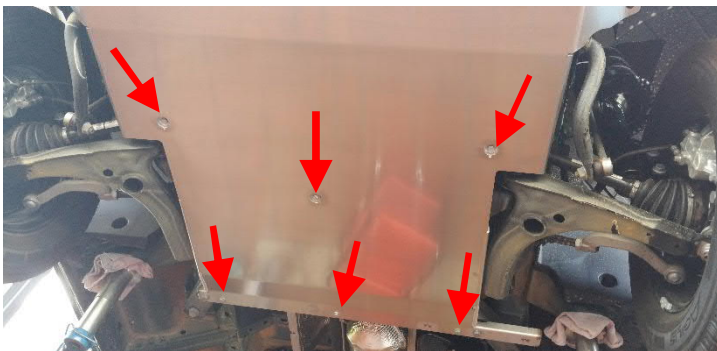


Fix the counterholder to the bumper through both the rear holes using the 2 lens head screws M6x20 provided in the delivery.

Tighten the screws with 8 Nm.



Re-fix the bumper on the crossbar below the cooler using the fixing clips.



Join the protection plate engine using a gearbox jack on the transverse bar and the assembly carrier and fix onto the transverse bars and the assembly carrier using the 9 M8x35 hex collar screws provided in the delivery. The M8 screws are tightened with 20 Nm.

The wheel housing liners are fixed with two torx sheet metal screws 5x16 each and tightened with 3 Nm.



As described in the installation guide 1461 0027, finally tighten both the M10 screws from the transverse bar at the back with 30 Nm.