



Volkswagen Transporter T5-T6.1			
Rocker protection			
Nummer:	1412 0009	Stand:	02.2021
Revision:	04	Sprache:	EN

Installation guide 1412 0009

This installation guide applies to these part n°/descriptions:

- 1412 0009 T5 + T6 – Rocker panel for short wheel base
- 1412 0010 T5 + T6 – Rocker panel for long wheel base
- 1412 0008 T5 + T6 – Rocker panel for double cabin
- 1415 0009 T6.1 – Rocker panel for short wheel base
- 1415 0010 T6.1 – Rocker panel for long wheel base



Volkswagen Transporter T5-T6.1			
Rocker protection			
Number:	1412 0009	Stand:	02.2021
Revision:	04	Sprache:	EN

Important

To ensure proper function and optimal quality of our parts, their installation must be done in accordance with this installation guide and according to Volkswagen manufacture's specifications in a professional workshop. SEIKEL GmbH and its employees shall not be responsible for damage and its consequences of any nature, which are caused due to non-observance or ignorance of these guidelines. Warranties shall be void for incorrectly performed installations.

Installation guide

Please refer to the Volkswagen instructions for the exact working steps as well as the tightening torques. In case of deviation, our specifications shall be applicable.

NOTE!

All the drill holes and breakthroughs must be deburred from both the sides. Metal swarfs are to be removed / vacuumed up immediately, and it has to be ensured that no swarfs fall into the hollow space in the body!

Apply paint (as per current valid Volkswagen repair manual "Paint", refer to ELSA):

1. Apply wash primer and allow it to dry in accordance with the item description. A hot-air dryer can be used, if necessary. We recommend: 1k Wash primer LLS MAX 106 M2.
2. Apply filler and allow it to dry in accordance with the item description. A hot-air dryer can be used, if necessary. We recommend 2K-HS filler LLS MAX 202 M2.
3. Apply base coat on visible areas based on the vehicle-specific varnish and allow base coat to dry in accordance with the item description. A hot-air dryer can be used, if necessary.
4. Protect all cutting edges, hollow spaces or drill holes additionally with anti-corrosion wax, if required using a small brush. We recommend transparent preservative wax AKR 321 M 15 4.



Parts list

- 1x rocker panel
- 5x M8x20 hex screw
- 5x M8 rivet nut



Accessories in 1415 0009:

- 1x reinforcement for front (long)
- 1x reinforcement for centre (short)
- 6x M6x20 hex screw



Accessories in 1415 0010:

- 1x reinforcement for front (long)
- 2x reinforcement for centre (short)
- 9x M6x20 hex screw



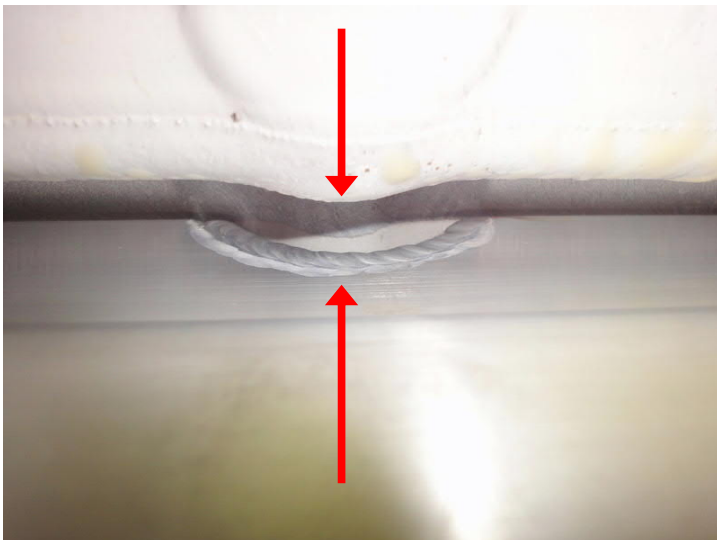
Recommended special tools

Rivet nut pliers

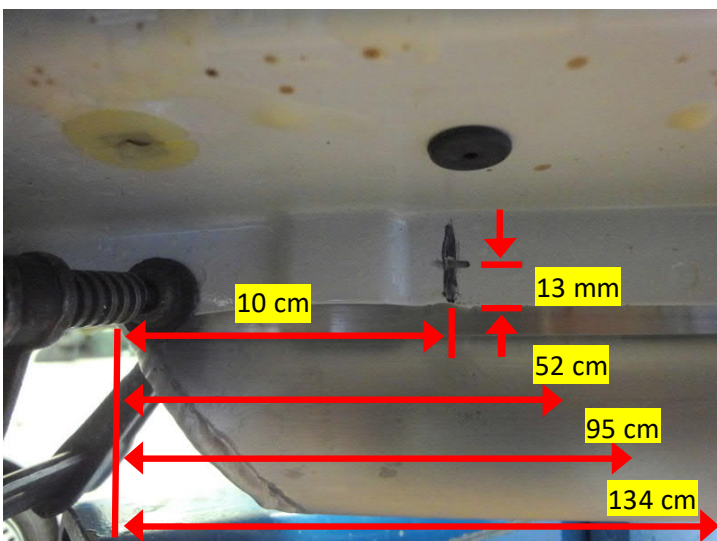


Instructions

Dismount both the claddings on the right side below the side skirt, and remove all the sealing plugs of the vehicle body.



Mount rocker panel protection and centre with its recess on the middle of the 3 car body reinforcements. Then press the rocker panel onto the body using a gearbox jack.



Mark 10 cm beginning from the front end of the rocker panel on the notch of the side skirt and 13 mm from the lower edge.

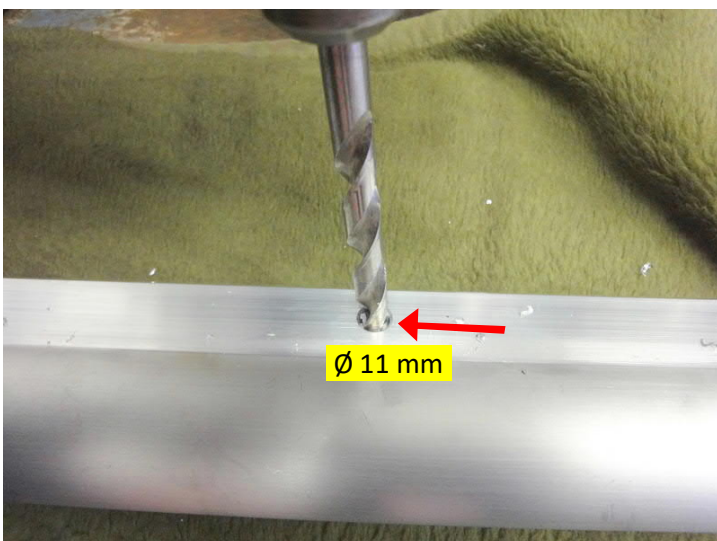
Similarly, mark a point from front at a distance of 52 cm, 95 cm and 134 cm.



Press the rocker panel onto the body using gearbox jack. Drill all the points with a 9.5 mm drill through the side skirt and through the rocker panel.



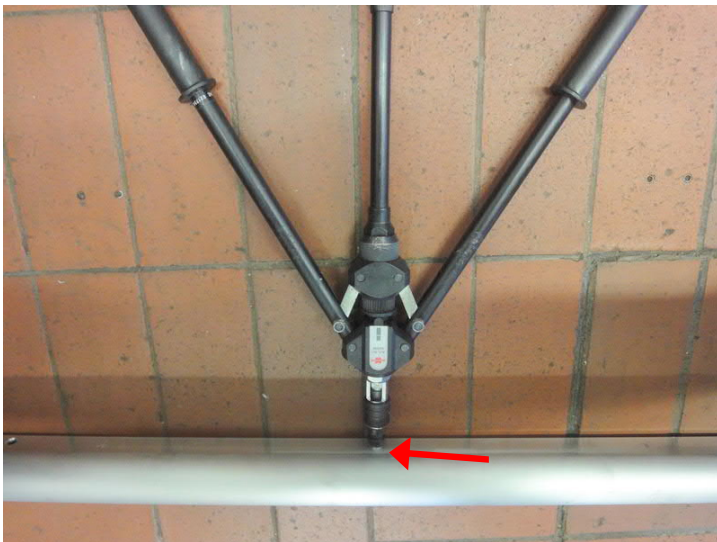
Deburr all the drill holes on rocker and treat with anti-corrosive protection.



Enlarge all the pre-drilled holes in the rocker panel to 11 mm.



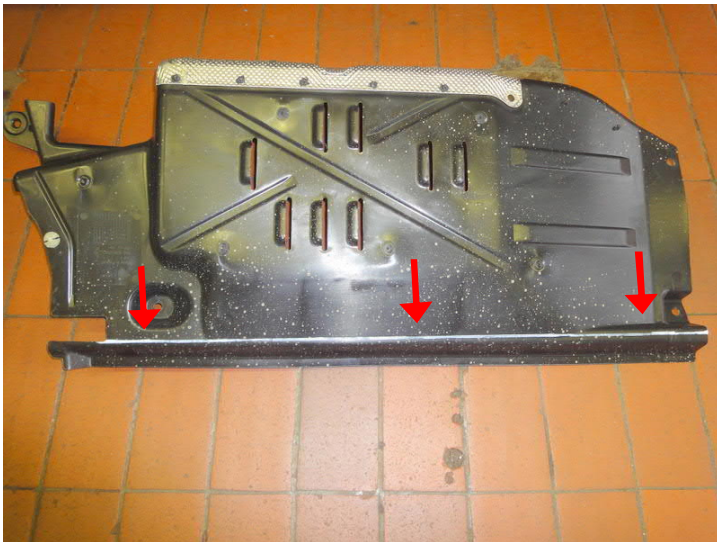
Deburr all the drill holes in the rocker panel.



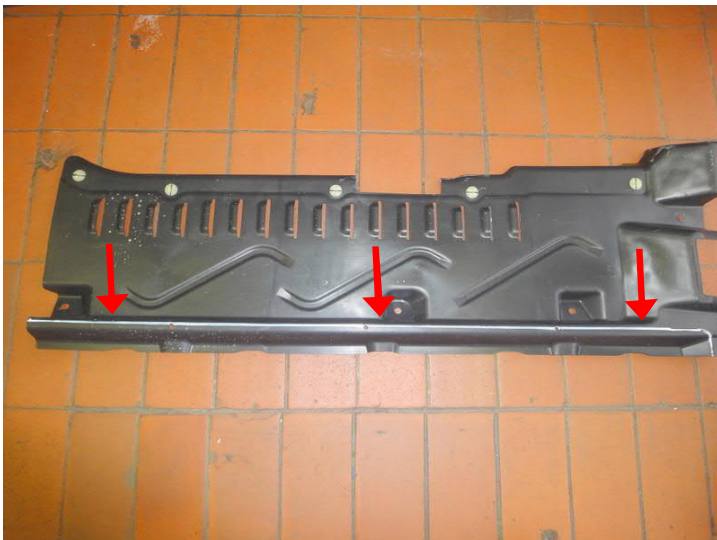
Inset a rivet nut M8 in all the drill holes of the rocker panel.



Using gearbox jack, press the rocker panel again on the body and screw all the points with a hex screw M8x20 mm and tighten using 15 Nm.



Mark plastic cladding as shown in the image and cut it.



Mar, cut and re-mount claddings as shown in the image.



Trimming plastic cladding T6.1:
Mark the cladding as shown in this and the following image and cut it.



Mark and cut cladding as shown in the image.

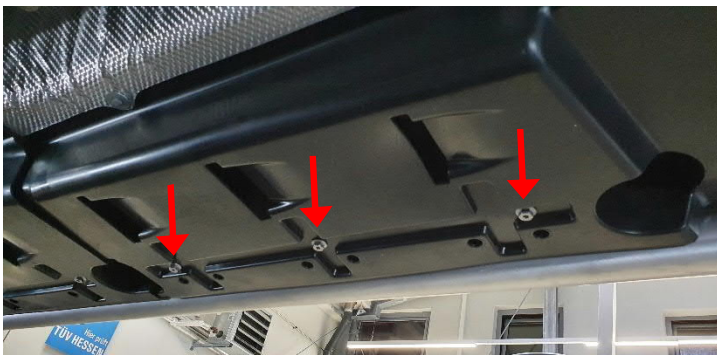


Place the supplied reinforcement for centre (short), as shown in the image, from inside onto the centre cladding and align in the centre. Through the nuts on the reinforcement, transfer the holes onto the cladding and drill to 7 mm.

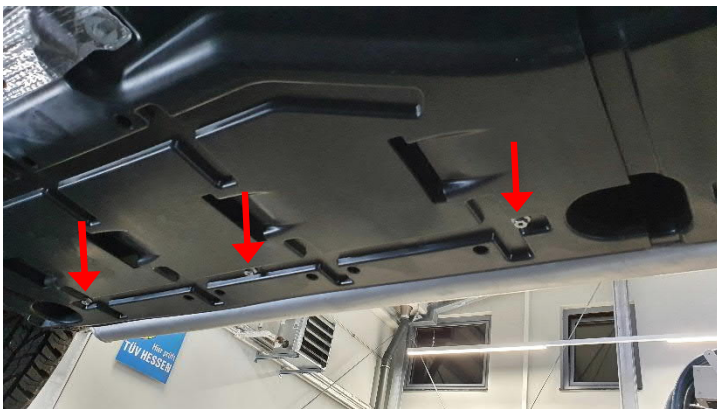
In case of vehicles with long wheel base, repeat this procedure for the rear cladding.



Place the supplied reinforcement for front (long), as shown in the image, from inside onto the front cladding and align in the centre. Through the nuts on the reinforcement, transfer the holes onto the cladding and drill to 7 mm.



As can be seen in the following two images, the reinforcements get fixed to the claddings using three of the supplied M6x20 screws in each case.



Afterwards mount the claddings back onto the vehicle.