



| Volkswagen Transporter T5/T6 | | | |
|------------------------------|-----------|----------|---------|
| Protection plate engine | | | |
| Nummer: | 1412 0000 | Stand: | 10.2017 |
| Revision: | 06 | Sprache: | EN |

Installation guide 1412 0000

This installation guide applies to this part n°/description:

1412 0000 T5 + T6 – Protection plate „Desert“ for engine and chassis

1412 0017 T5 + T6 – Protection plate „Widder“ for engine and chassis



| Volkswagen Transporter T5/T6 | | | |
|------------------------------|-----------|----------|---------|
| Protection plate engine | | | |
| Nummer: | 1412 0000 | Stand: | 10.2017 |
| Revision: | 06 | Sprache: | EN |

Important

To ensure proper function and optimal quality of our parts, their installation must be done in accordance with this installation guide and according to Volkswagen manufacture's specifications in a professional workshop. SEIKEL GmbH and its employees shall not be responsible for damage and its consequences of any nature, which are caused due to non-observance or ignorance of these guidelines. Warranties shall be void for incorrectly performed installations.

Installation guide

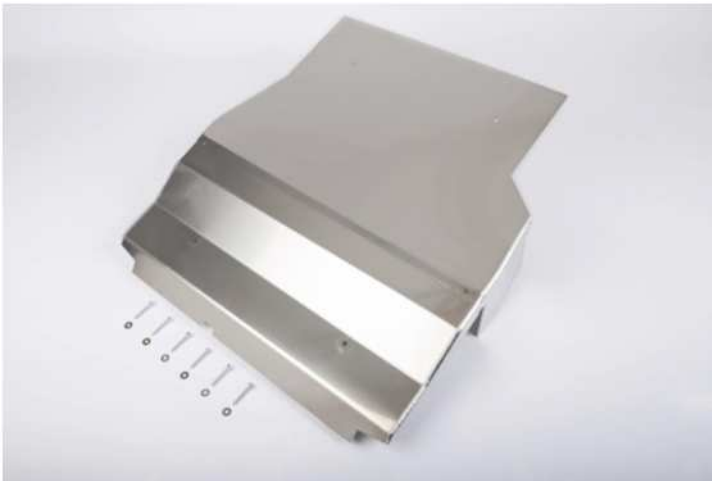
Please refer to the Volkswagen instructions for the exact working steps as well as the tightening torques. In case of deviation, our specifications shall be applicable.

NOTE!

All the drill holes and breakthroughs must be deburred from both the sides. Metal swarfs are to be removed / vacuumed up immediately, and it has to be ensured that no swarfs fall into the hollow space in the body!

Apply paint (as per current valid VW repair manual "Paint", refer to ELSA):

1. Apply wash primer and allow it to dry in accordance with the item description. A hot-air dryer can be used, if necessary. We recommend: 1k Wash primer LLS MAX 106 M2.
2. Apply filler and allow it to dry in accordance with the item description. A hot-air dryer can be used, if necessary. We recommend 2K-HS filler LLS MAX 202 M2.
3. Apply base coat on visible areas based on the vehicle-specific varnish and allow base coat to dry in accordance with the item description. A hot-air dryer can be used, if necessary.
4. Protect all cutting edges, hollow spaces or drill holes additionally with anti-corrosion wax, if required using a small brush. We recommend transparent preservative wax AKR 321 M 15 4.

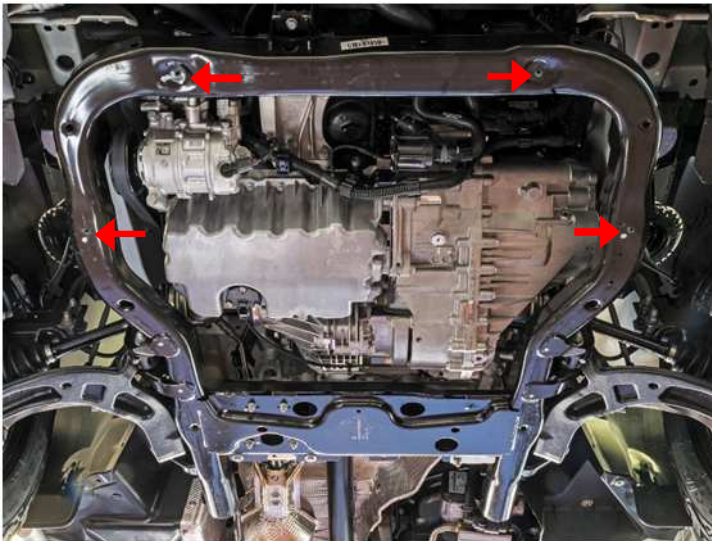


Parts list

- 1x aluminium engine protection
- 6x M8x60 hex head screw
- 6x washers

Required tools

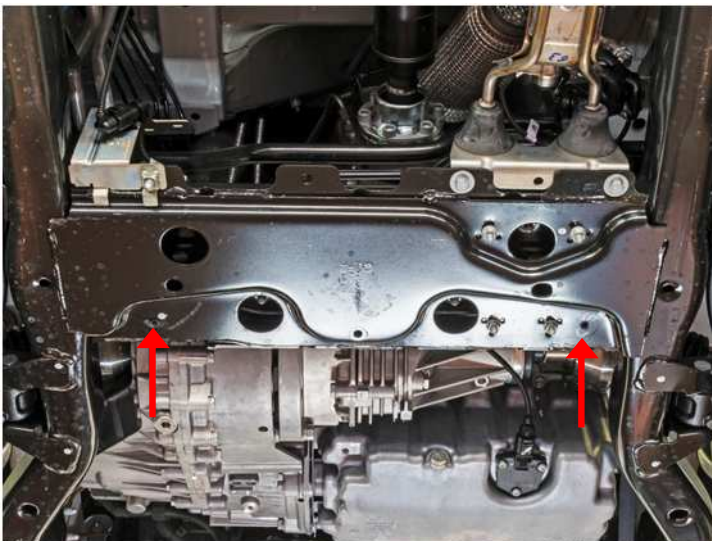
- Torque wrench
- 13 mm socket



Instructions

Dismount original engine protection (if available).

Fix the aluminium protection plate on the four threaded inserts marked at the front ...



... and two threaded inserts at the rear.

Product: 1412 0000 Underride protection engine „Desert“



Fix engine protection to the original threaded inserts on the assembly carrier using 6 M8x60 screws.

Important: First fix both the encircled screws with 30 Nm and then fix the remaining screws with 30 Nm.

Product: 1412 0017 Underride protection engine „Widder“



Fix engine protection to the original threaded inserts on the assembly carrier using 6 M8x60 screws.

Important: First fix both the encircled screws with 30 Nm and then fix the remaining screws with 30 Nm.