



Volkswagen Transporter T5/T6			
Underfloor spare wheel carrier			
Nummer:	1212 0009	As on:	11.2020
Revision:	05	Language:	EN

## Installation guide 1212 0009

This installation guide applies to this part n°/description:

1212 0009 T5 + T6 – Underfloor spare wheel carrier for tyres up to 225/75 R16,  
235/70 R16 or 235/65 R17



Volkswagen Transporter T5/T6			
Underfloor spare wheel carrier			
Nummer:	1212 0009	As on:	11.2020
Revision:	05	Language:	EN

## Important

To ensure proper function and optimal quality of our parts, their installation must be done in accordance with this installation guide and according to Volkswagen manufacture's specifications in a professional workshop. SEIKEL GmbH and its employees shall not be responsible for damage and its consequences of any nature, which are caused due to non-observance or ignorance of these guidelines. Warranties shall be void for incorrectly performed installations.

## Installation guide

Please refer to the Volkswagen instructions for the exact working steps as well as the tightening torques. In case of deviation, our specifications shall be applicable.

## NOTE!

All the drill holes and breakthroughs must be deburred from both the sides. Metal swarfs are to be removed / vacuumed up immediately, and it has to be ensured that no swarfs fall into the hollow space in the body!

Apply paint (as per current valid VW repair manual "Paint", refer to ELSA):

1. Apply wash primer and allow it to dry in accordance with the item description. A hot-air dryer can be used, if necessary. We recommend: 1k Wash primer LLS MAX 106 M2.
2. Apply filler and allow it to dry in accordance with the item description. A hot-air dryer can be used, if necessary. We recommend 2K-HS filler LLS MAX 202 M2.
3. Apply base coat on visible areas based on the vehicle-specific varnish and allow base coat to dry in accordance with the item description. A hot-air dryer can be used, if necessary.
4. Protect all cutting edges, hollow spaces or drill holes additionally with anti-corrosion wax, if required using a small brush. We recommend transparent preservative wax AKR 321 M 15 4.



## Parts list

- 2x latch fastener with hinge and holder, pre-assembled
- 2x rubber bushes
- 2x metal bushes
- 2x M12x90 hex screws

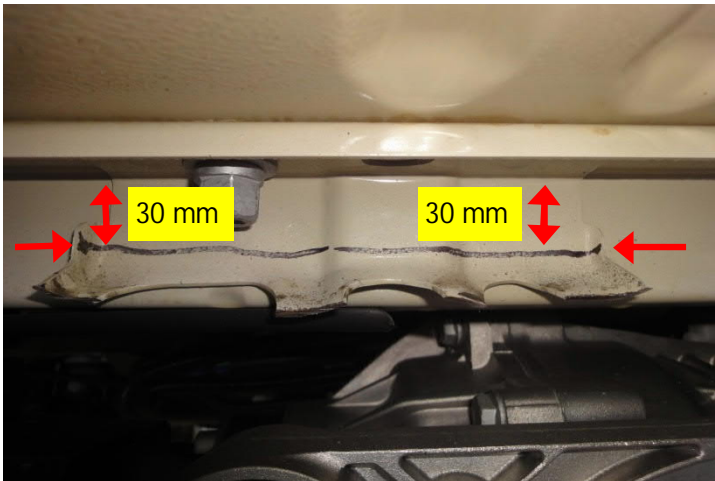


## Instructions

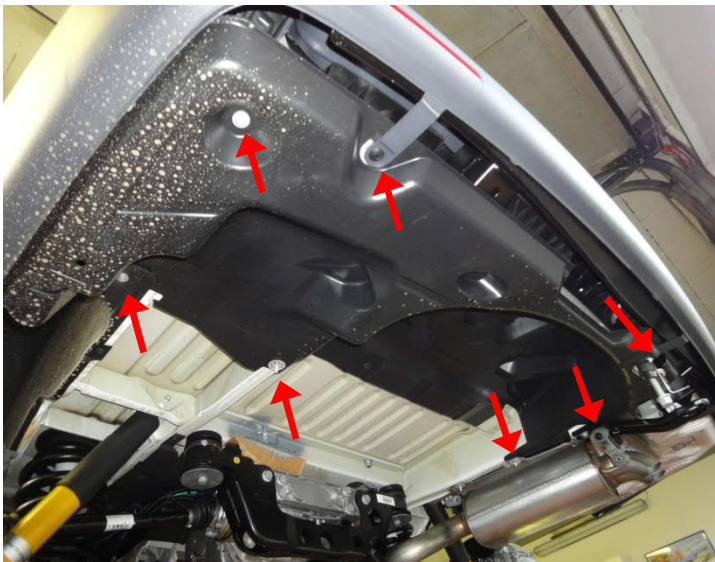
Open latch fastener and remove spare wheel.



Bend open the pin as shown in the image and dismount latch fastener.



Mark holder as shown in the image, cut off on vehicle frame and protect the cutting edges against corrosion.



Loosen screw connections on underfloor cover and dismount.



Preserve marked floor pan with wax, as shown in the image.



Mark underfloor cover as shown in the image and cut out marked area.



Support rear axle gearbox with gearbox jack and remove both the fixing screws marked in the image.

Fix new spare wheel carrier with these screws, tighten with 90 Nm and turn 90° further.



Re-assemble the prepared underfloor cover, screw latch fastener of spare wheel carrier onto the original support using new screws and rubber/metal distance tubes.



Volkswagen Transporter T5/T6			
Underfloor spare wheel carrier			
Nummer:	1212 0009	As on:	11.2020
Revision:	05	Language:	EN

## Important instruction:

In the case of some vehicles, it may happen that the spare wheel can be fixed into the holder only after deflating it. This problem mainly occurs in the types California and Multivan.

After fixing the wheel in deflated condition into the underfloor spare wheel holder, the tyre can be filled again with pressurised air in accordance with the vehicle specifications.