



Volkswagen Crafter & MAN TGE from m. y. 2017			
Suspension lift kit			
Nummer:	1061 0000	Stand:	06-2021
Revision:	08	Sprache:	EN

Installation guide 1061 0000

This installation guide applies to this part n°/description:

- 1061 0000 Volkswagen Crafter & MAN TGE from model year 2017, 4MOTION
PR VV0 – Suspension lift kit
- 1061 0001 Volkswagen Crafter & MAN TGE from model year 2017, rear drive from
5t – Suspension lift kit
- 1061 0002 Volkswagen Crafter & MAN TGE from model year 2017, 4MOTION
PR VV8 – Suspension lift kit
- 1061 0003 Volkswagen Crafter & MAN TGE from Model Year 2017, Front-wheel
drive –Suspension lift kit



Volkswagen Crafter & MAN TGE from m. y. 2017			
Suspension lift kit			
Nummer:	1061 0000	Stand:	06-2021
Revision:	08	Sprache:	EN

Important

To ensure proper function and optimal quality of our parts, their installation must be done in accordance with this installation guide and according to Volkswagen manufacture's specifications in a professional workshop. SEIKEL GmbH and its employees shall not be responsible for damage and its consequences of any nature, which are caused due to non-observance or ignorance of these guidelines. Warranties shall be void for incorrectly performed installations.

Installation guide

Please refer to the Volkswagen instructions for the exact working steps as well as the tightening torques. In case of deviation, our specifications shall be applicable.

NOTE!

All the drill holes and breakthroughs must be deburred from both the sides. Metal swarfs are to be removed / vacuumed up immediately, and it has to be ensured that no swarfs fall into the hollow space in the body!

Apply paint (as per current valid Volkswagen repair manual "Paint", refer to ELSA):

1. Apply wash primer and allow it to dry in accordance with the item description. A hot-air dryer can be used, if necessary. We recommend: 1k Wash primer LLS MAX 106 M2.
2. Apply filler and allow it to dry in accordance with the item description. A hot-air dryer can be used, if necessary. We recommend 2K-HS filler LLS MAX 202 M2.
3. Apply base coat on visible areas based on the vehicle-specific varnish and allow base coat to dry in accordance with the item description. A hot-air dryer can be used, if necessary.
4. Protect all cutting edges, hollow spaces or drill holes additionally with anti-corrosion wax, if required using a small brush. We recommend transparent preservative wax AKR 321 M 15 4.



Parts list front axle

PR-Nr.: VV0

- 2x suspension strut front axle
- 2x bump stop
- 2x suspension strut bearing
- 2x M16 flange clamping nut
- 2x M14 flange nut
- 4x M14x1.5x65 flange screw
- 4x M14x1.5 clamping nut
- 6x M10x1.5 clamping nut
- 2x cap top



Parts list front axle

PR-Nr.: VV8

- 2x suspension strut front axle
- 2x M14 flange nut
- 4x M14x1.5x65 flange screw
- 4x M14x1.5 clamping nut
- 6x M10x1.5 clamping nut
- 2x cap top



Parts list rear axle front wheel drive

- 2x gas pressure damper rear axle
- 4x spring U-bolt
- 1x extension bump stop right
- 1x extension bump stop left
- 2x Adapter for cable holder
- 2x spacer plate 30mm
- 2x M14x1.5x175 flange screw
- 2x M14x1.5 flange nut
- 2x M12x1.5x75 flange screw
- 2x M12x1.5 flange nut
- 2x M8x20 flange screw
- 8x M14x1.5 flange clamping nut

Parts list rear axle

4motion, 80 mm axle



- 2x gas pressure damper rear axle
- 4x spring U-bolt
- 1x extension bump stop right
- 1x extension bump stop left
- 2x band clamp
- 2x half shell
- 2x Adapter for cable holder
- 2x spacer plate 30mm
- 2x brackets for ABS pipe rear axle
- 1x spacer for transmission shaft center bearing
- 2x M14x1.5x175 flange screw
- 2x M14x1.5 flange nut
- 2x M12x1.5x75 flange screw
- 2x M12x1.5 flange nut
- 2x M8x20 flange screw
- 8x M14x1.5 flange clamping nut
- 2x M10x80 hex combination screw

Parts list rear axle

rear wheel drive, 100 mm axle



- 2x gas pressure damper rear axle
- 4x spring U-bolt
- 1x extension bump stop right
- 1x extension bump stop left
- 1x right bracket extension bump stop
- 1x left bracket extension bump stop
- 2x band clamp
- 2x half shell
- 2x Adapter for cable holder
- 2x spacer plate 30mm
- 2x brackets for ABS pipe rear axle
- 1x spacer for transmission shaft center bearing
- 2x M14x1.5x175 flange screw
- 2x M14x1.5x72 flange screw
- 4x M14x1.5 flange nut
- 2x M8x20 flange screw
- 8x M14x1.5 flange clamping nut
- 2x M10x80 hex combination screw
- 2x coupling rods
- 1x holder for wear indicator rear axle



Instructions front axle

Dismount the front axle suspension strut as per Volkswagen repair instructions and dismantle. Detach the bump stop from the dismantled suspension strut and remove the bellows from the bump stop. Attach the bellow to the bump stop provided in the delivery and insert the bump stop in the piston rod of the suspension strut provided in the delivery. Then, reassemble the suspension strut with the original spring and the suspension strut bearing provided in the delivery as per Volkswagen repair instructions and mount in the vehicle.



Instructions rear axle

As shown in the image, measure the distance between centre fixing screw at the top and fastening clamp of the level measurement sensor on the rear axle damper and note down. Then, dismantle the clamp from the damper.



Dismount the rear axle damper.



Fix the adapter for pipe holder, as shown in the image, along with the flange screw M8x20 and tighten with 20 Nm.

Then secure the axle with a gearbox jack and dismount the spring U-bolt.



Lower the axle with the gearbox jack and insert the spacer plate provided in the delivery between spring and axle. Ensure that the centring pin of the spacer plate as well as flat spring latches in the hole provided.

Then, install the longer spring U-bolts provided in the delivery



Tighten the spring U-bolts using the flange clamping nuts M14x1.5 as per Volkswagen specifications (with 130 Nm and turn 180° further).

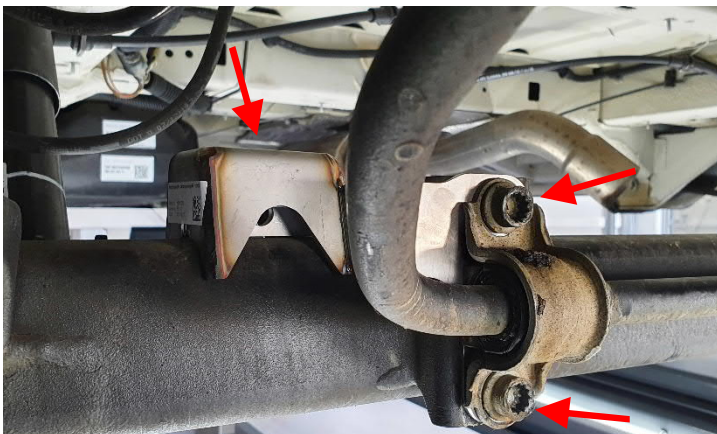
For vehicles with front wheel drive (10610003) next to the shock absorber mount, the spring clip must be shortened by two threads below the nut in order to have clearance for the screw that holds the shock absorber.



Replace the original brackets on both sides on the spring tensioning panel with the brackets for ABS pipe provided. As shown in the image, mount each of the brackets displaced outwards. Tighten the fixing screws as per Volkswagen instructions.



Place the bump stop extension between shock absorber support and holder for the stabiliser on the axle tube. Fix the extension with the help of the band clamp and half-shell provided in the delivery onto the axle tube. Press the extension against the holder for the stabiliser and tighten the band clamp with 18 Nm.



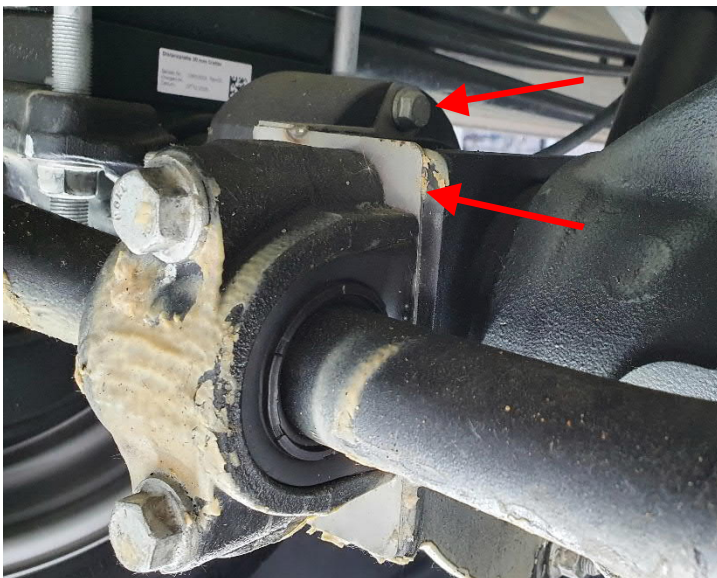
In front-wheel drive vehicles, the extension bump stop made of sheet metal should be used instead of the aforementioned cast iron bump stop. To do so, remove the stabiliser bearing on the rear axle and mount the extension bump stop between stabiliser bearing and rear axle, as shown in the image. Tighten both the screws of the stabiliser bearing again as per Volkswagen instructions.



Instructions for rear axles from 5t (1061 0001)

All additional steps that are necessary for vehicles from 5t with rear-wheel drive are outlined below:

At the rear left, the holder for the connector of the brake lining wear indicator must be removed and replaced with the supplied holder.



In order to prevent the mounted extension bumpers against twisting, the supplied holder must be installed to the left and right between the stabiliser bearings and the axle. Subsequently, fix the holder to the extension of the bump stop using one of the supplied screws M8x20 and tighten with 20 Nm.

The bolted connections of bearings for the stabiliser must be tightened according to VW specifications.



The two coupling rods on the stabilizer of the rear axle must be replaced by the supplied coupling rods. The screws must be tightened according to Volkswagen specifications.



The two holders for the brake lines of the rear axle must be bent downwards so that the brake hoses are not under tension when in rebound, but can move seamlessly.

The same applies to the holder of the handbrake cables, which is attached to the underbody above the cardan shaft.

End of the specific steps for rear axles from 5t (1061 0001)



Mount the shock absorber provided in the delivery with the new screws and nuts provided in the delivery as per Volkswagen specifications.



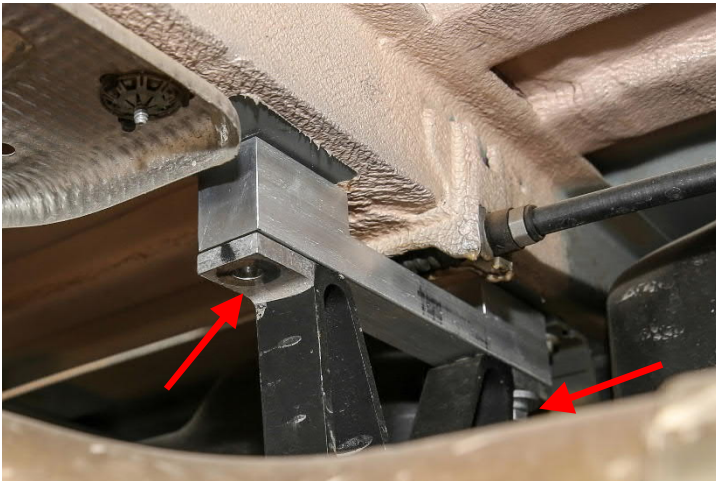
Volkswagen Crafter & MAN TGE from m. y. 2017

Suspension lift kit

Nummer:	1061 0000	Stand:	06-2021
Revision:	08	Sprache:	EN



On the right side, fix the clamp of the level measurement sensor on the damper in the same distance as measured before dismantling and tighten the screw with 8 Nm.



Dismount the support of transmission shaft center bearing from body and attach the provided spacers. Afterwards tighten the support with both the provided hex combination screws with 50 Nm +90°.

These screws have to be replaced after disassembly.

Art.-Nr.: 17100356



Vehicle with completely mounted 30 mm SEIKEL chassis suspension lift.



Volkswagen Crafter & MAN TGE from m. y. 2017			
Suspension lift kit			
Nummer:	1061 0000	Stand:	06-2021
Revision:	08	Sprache:	EN

After completing all the work:

- Bring the vehicle to the level specified as per data sheet (using weights) for the purpose of axle alignment.
- If it is not possible to achieve the specified axle set-point of both the axles, for instance due to vehicle equipment, it is permissible to adjust the axles as per the standard values of Volkswagen AG.
- Adjust the axle geometry as per data sheet.
- Adjust headlight as per Volkswagen guidelines.

Add the missing data in the attached certificate of warranty and re-send so that the warranty can become valid.

Model:		Volkswagen Crafter from model year 2017	
Suspension lift kit:		SEIKEL 1061 0000, 1061 0001, 1061 0002	
Adjustment:		Left	Right
Ride height	Front	496 +/- 17mm	
	Rear	545 +11 / -40mm	
Date:	10.2017	Set point	Max. difference left / right
Rear axle	Camber angle left/right		----
	Toe-in angel left/right		0°00' +/-15'
	Total toe-in angel		0°00' +/-30'
	Thrust angle		----
Front axle	Castor left/right		4°10' +/-40' incl. inclination
	Forward inclination		1°00' +/-40'
	Toe difference at 20° left/right		1°18' +/-00'
	Camber angle left/right		0°33' +/-35' +/-1°00'
	Toe-in angel left/right		0°00' +/-05'
	Total toe-in angel		0°00' +/-10'
	Wheel offset		----