



Project	
Notes	
Type	Date
Cat. No.	

**LVHB™ Series** Vapor Tight High Bay

**DESCRIPTION**  
 The LVHB series is an outstanding solution for food processing or cold storage facilities that require a gasket enclosure for extreme conditions. The optics have been optimized to provide maximum performance from LED Light sources. The vapor tight high lumen package allows the benefits of LED to be applied at high mounting heights that were traditionally exclusive to H.I.D. and Fluorescent. Primary applications include light industrial, gymnasiums, recreational environments, manufacturing plants, cold storage facilities, and warehouses.



**LVHB Series**  
 100W, 11,000 Lumens  
 140W, 16,000 Lumens  
 200W, 22,400 Lumens

**Specification Features**



**Construction**  
 Polycarbonate housing and rigid injection molded lens. Hinged driver tray for easy maintenance. Industrial fixture design allows for easy cleaning reduces dirt and water accumulation 12 stainless steel latches and four fixed installation points secures the fixture during transit and allows for fast installation.

**Qualifications**  
 All luminaires are built to UL 1598 and 2108 standards, and bear appropriate ETL labels. Wet location labeling is standard. Emergency equipped fixtures labeled UL924. IP Rating: IP65. Adheres to LM70, LM80, and TM21 industry standards. Not all models of this product may be DLC qualified. Please check the DLC Qualified Products List at [www.designlights.org/QPL](http://www.designlights.org/QPL) to confirm which models are qualified.

**Electrical**  
 Equipped standard with a 0-10V continuous dimming driver that works with any standard 0-10V control/dimmer. Long-Life LED's 60,000 hours at L80 with projected life over 100,000 hours for reduced life cycle maintenance costs. Power connection is easily accommodated through pre-drilled holes at each end, watertight plugs ship standard on each end.

**Installation**  
 Luminaire can be ceiling mounted or suspended via aircraft cable (sold separately).

**Warranty**  
 5-year Limited Warranty. See warranty documentation for more information.

Rated Life 60,000 hours  
 Limited Warranty 5 Years  
 Efficacy 145 lm/W  
 Continuous Dimming



**Quick Ship/ DLC Qualified**  
 Made to Order

**Ordering Information**

Example: LVHB-140-MVD-850-OS

LVHB	140	MVD	8	40	
<b>Series</b> LVHB Vapor Tight High Bay	<b>Rated Wattage</b> 100- 100W 11,000 Lumens <sup>1</sup> 140- 140W 16,000 Lumens <sup>1</sup> 200- 200W 22,400 Lumens <sup>1</sup>	<b>Driver Type</b> MVD- 120-277V; 0-10V Dimming <sup>1</sup> HVD-347-480V,0-10V Dimming <sup>1</sup>	<b>CRI</b> 8 80+ CRI <sup>1</sup>	<b>Color Temp</b> 40 4000K <sup>1</sup> 50 5000K <sup>1</sup>	
		<b>Emergency Backup</b> EML8 800lm EML16 1600lm	<b>Controls</b> OS- Occupancy Sensor MOS- Microwave Sensor MOSB-Bi-Level Microwave Sensor MOSB-FM-Bi-Level Microwave Sensor Fixture Mount	<b>Accessories</b> FW3 6' 3 Wire Fixture Whip FW4 6' 4 Wire Fixture Whip	

Specifications and Dimensions subject to change without notice.

## Performance Summary

Input Voltage	120-277V
Input Frequency	50/60 Hz
Rated Wattage	See Performance Table
Delivered Lumens	See Performance Table
Efficacy	> 114.2 lm/W
CRI	80+, R9 > 0
Available CCT <sup>1</sup>	5000K
Color Consistency <sup>2</sup>	5-step MacAdam Ellipse
Rated Life	60,000 hours
L70 <sup>3</sup>	> 72,000 hours or > 45,000
Power Factor	>0.99
THD	< 2.3%
Dimming	0-10V Continuous (10-100%)
Operating Temp.	-18°C to 40°C

## Performance Data

Lens Type	Form Factor	Catalog No.	Rated Wattage (W)	Delivered Lumens	Efficacy (lm/W)
Frosted Acrylic		LVHB-140-MVD-850	140W	16,000	114.2

### NOTES:

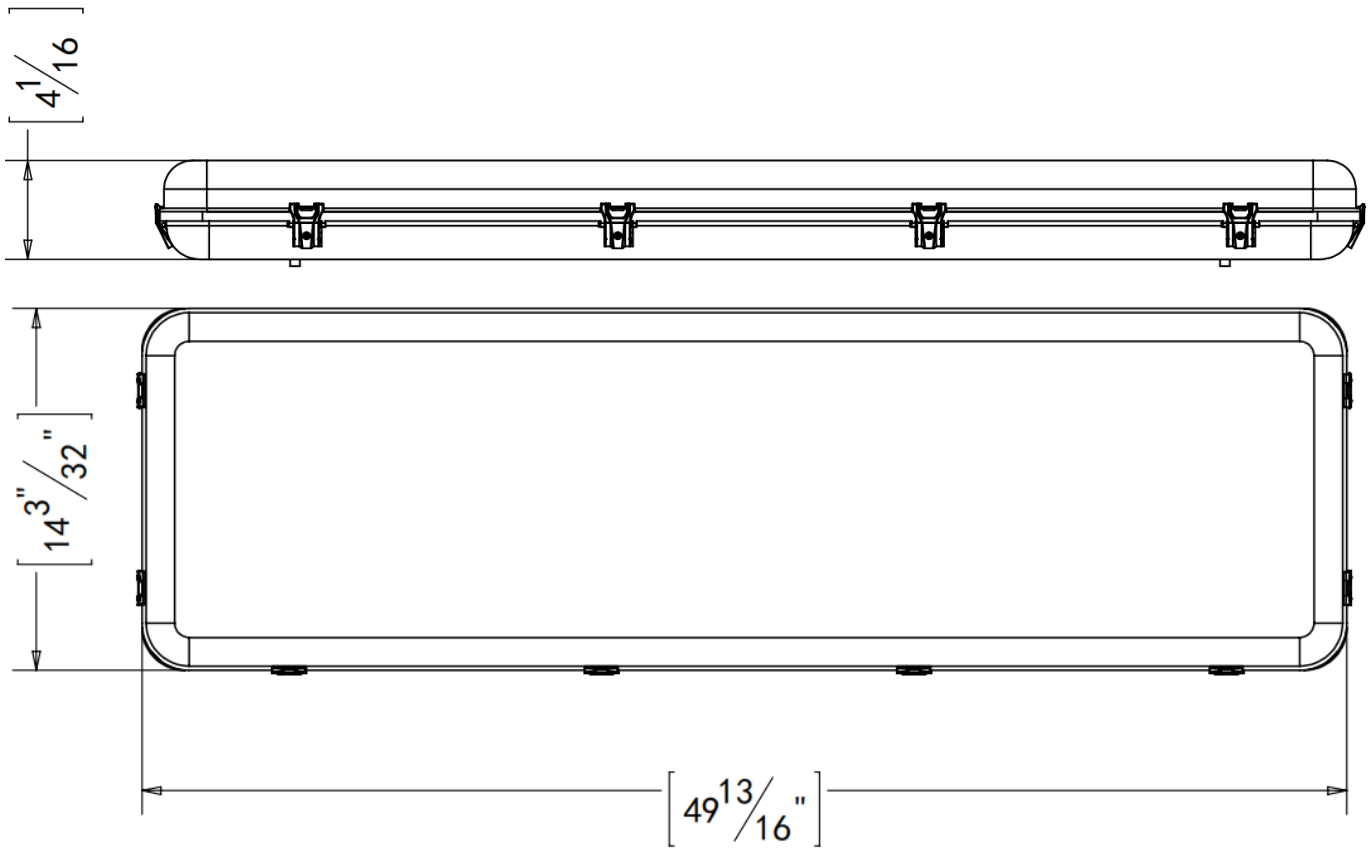
- <sup>1</sup> Made to order items. Minimum 90 day lead time. Minimum 500 order quantity.
- <sup>2</sup> DLC Listed
- <sup>3</sup> DLC Premium Listed
- <sup>4</sup> Quick ship: 5000K. Other CCTs may require a lead time or be special order
- <sup>5</sup> Typical color consistency. May vary or be changed.
- <sup>6</sup> Actual performance may differ as a result of end-user environment and application. All values are design or typical values, measured under laboratory conditions at 25 °C.

Specifications and Dimensions subject to change without notice.



Product Dimensions

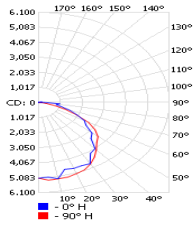
LVHB-140



Photometric Data

LVHB-140-MVD-850 Tested in accordance to IESNA LM-79

Polar Candela Curve



Zonal Lumen Summary

Zone	Lumens	% Lamp	% Luminaire
0-30	4,243.00	27.20%	27.30%
0-40	7,007.00	45%	45%
0-60	12,283.10	78.90%	79%
60-90	2,969.60	19.10%	19.10%
70-100	1,381.30	8.90%	8.90%
90-120	262.8	1.70%	1.70%
0-90	15,252.60	98%	98.10%
90-180	302.5	1.90%	1.90%
0-180	15,555.20	99.90%	100%

Coefficients of Utilization

Effective Floor Cavity Reflectance: 20%

RCC %:	80				70				50			
	70	50	30	0	70	50	30	0	50	30	20	
RW %:	1.18	1.18	1.18	1.18	1.15	1.15	1.15	0.98	1.1	1.1	1.1	
RCR: 0	1.08	1.04	0.99	0.95	1.05	1.01	0.97	0.83	0.96	0.93	0.9	
1	0.99	0.9	0.84	0.78	0.96	0.88	0.82	0.7	0.85	0.79	0.75	
2	0.9	0.8	0.72	0.65	0.87	0.78	0.7	0.6	0.75	0.68	0.63	
3	0.82	0.71	0.62	0.55	0.8	0.69	0.61	0.51	0.66	0.59	0.54	
4	0.76	0.63	0.54	0.48	0.74	0.62	0.54	0.45	0.6	0.52	0.47	
5	0.7	0.57	0.48	0.42	0.68	0.56	0.47	0.4	0.54	0.46	0.41	
6	0.65	0.51	0.43	0.37	0.63	0.51	0.42	0.35	0.49	0.41	0.36	
7	0.6	0.47	0.39	0.33	0.59	0.46	0.38	0.31	0.45	0.37	0.32	
8	0.56	0.43	0.35	0.29	0.55	0.42	0.35	0.28	0.41	0.34	0.29	
9	0.53	0.4	0.32	0.27	0.52	0.39	0.32	0.26	0.38	0.31	0.26	
10												

Accessory Options



Whips

- CH-3.5 36 in Chain Hanger Kit
- FW3 6' 3 Wire Fixture Whip with 1/2 Connector. in
- FW3-BL 6' 3 Wire Fixture Whip with 1/2 Connector (Black)
- FW3-M 6' 3 Wire Fixture Whip with 1/2 Connector (Metal)
- FW312 12' 3 Wire Fixture Whip with 1/2 Connector. in
- FW4 6' 4 Wire Flex/Whip\_
- RS Rocker Switch
- SM-22 2x2 Surface Mount Shroud Kit for RLP, LTF Seris Fixtures
- SM-24 2x4 Surface Mount Shroud Kit for RLP, LTF Series Fixtures



© 2019 Globalux Lighting, LLC. All rights reserved. For informational purposes only. Reproduction in whole or part is prohibited without prior written consent of the copyright owner. The information presented in this document does not form part of any quotation or contract, is believed to be accurate and reliable and may be changed without notice. No liability will be accepted by the publisher for any consequences of its use. Globalux Lighting reserves the rights make changes in specification at any time without notice.

**Globalux Lighting LLC**  
 www.globaluxlighting.com  
 2037 S. Vineyard Ave  
 Ontario, CA 91761  
 Ph: 909-591-7506