

## Light Duty Machine Mount - For Light Machinery

### Facts

- **Withstands loads up to 2000 kg per machine mount**
- **Also available in stainless steel for use in environments with especially stringent requirements**
- **Articulated bolt for inclined surfaces**

**Light Duty Machine Mount** is a series of machine mounts specially developed for lighter equipment such as wood processing machines, compactors, light industrial machinery, office equipment and domestic appliances.

The machine mounts in the **Light Duty Machine Mount** series consist of levelling bolts with vulcanized rubber feet which guarantees safe and reliable installation on most surfaces.

These mounts can be fitted both in internal and external holes in the machine frame and chassis.



LLM 19



LLM 108



LLM 213



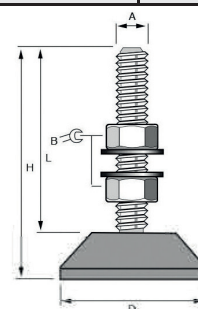
LLM 259

### Application areas

- **Light engineering machinery**
- **Compressors**
- **Office equipment**
- **Domestic appliances**

Model	Max load per MM daN (kg) per mount	D mm	A mm	B mm	H mm	L mm	Stainless or Galv.	Colour	Part no.					
LLM 19	40	46	M10	17	53	38	G	Grey	10405					
							S	Grey	10406					
					75	46	M10	17	53	38	G	Grey	10409	
											S	Grey	10404	
					75	60	G	Black	10400					
							S	Black	10401					
												G	Black	10407
												S	Black	10408

Model	Max Load daN (kg) per mount	D mm	H mm	h mm	B mm	C mm	A mm	Part no.
LL 10	1000	32	105	75	19	14	M 12	50001
LL 12	1200	45	105	75	19	14	M 12	50002
LL 20	2000	60	110	80	22	16	M14	50003



The products presented above form part of the standard range. In order to avoid injury, mounts should be fitted by authorized personnel with the requisite knowledge of the product, its installation and the user environment. We reserve the right to make component, colour and design changes without prior notice. This data sheet supersedes all previously published editions.