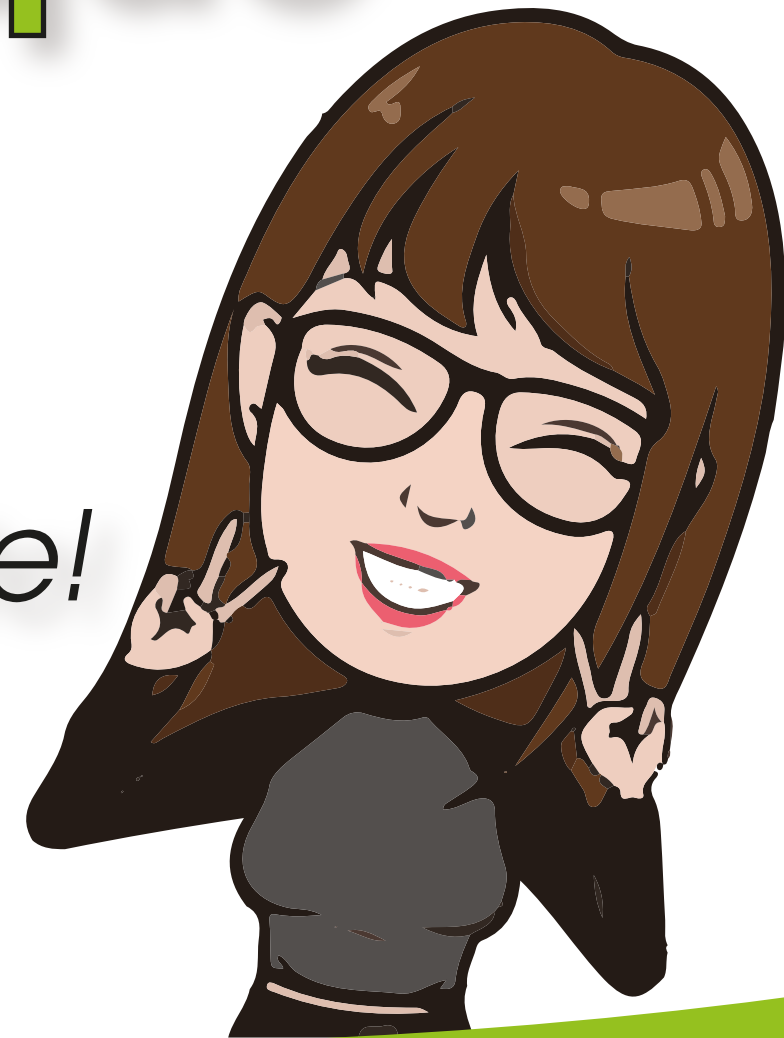




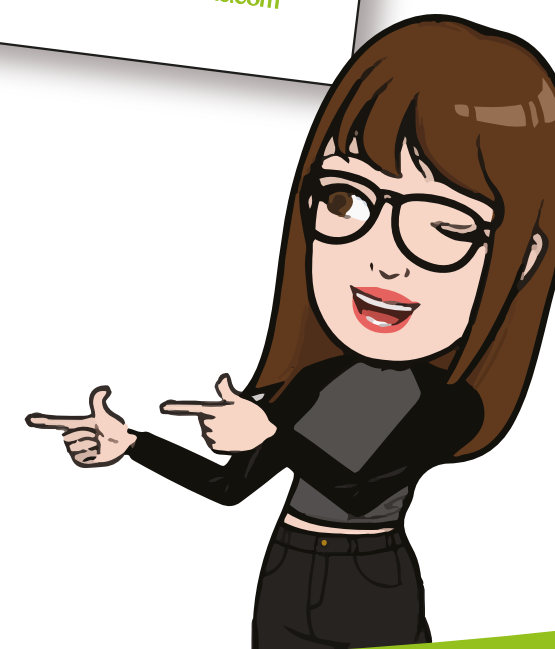
Raw Edge Applique

the
Zebra Way

Simple and in black and white!

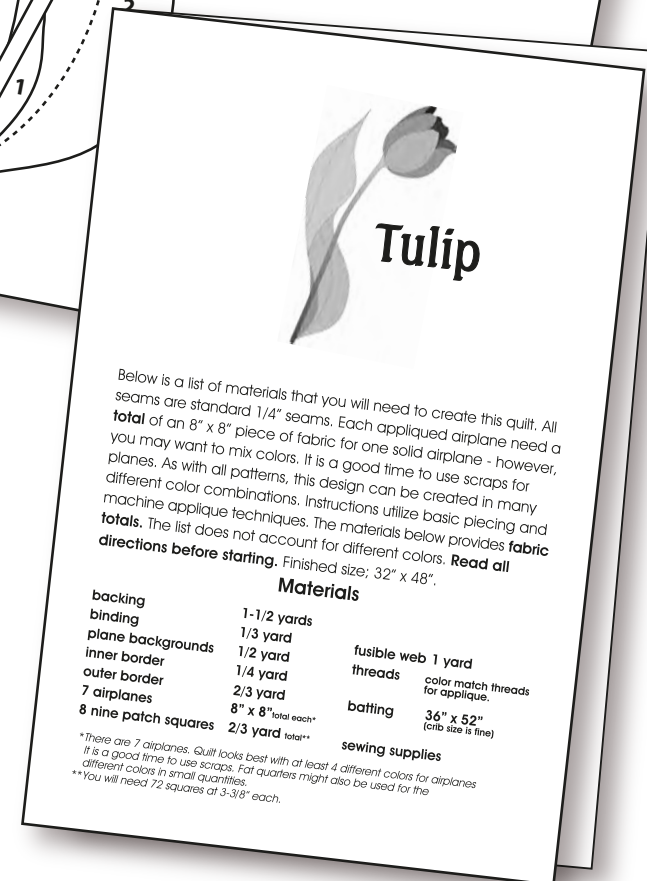
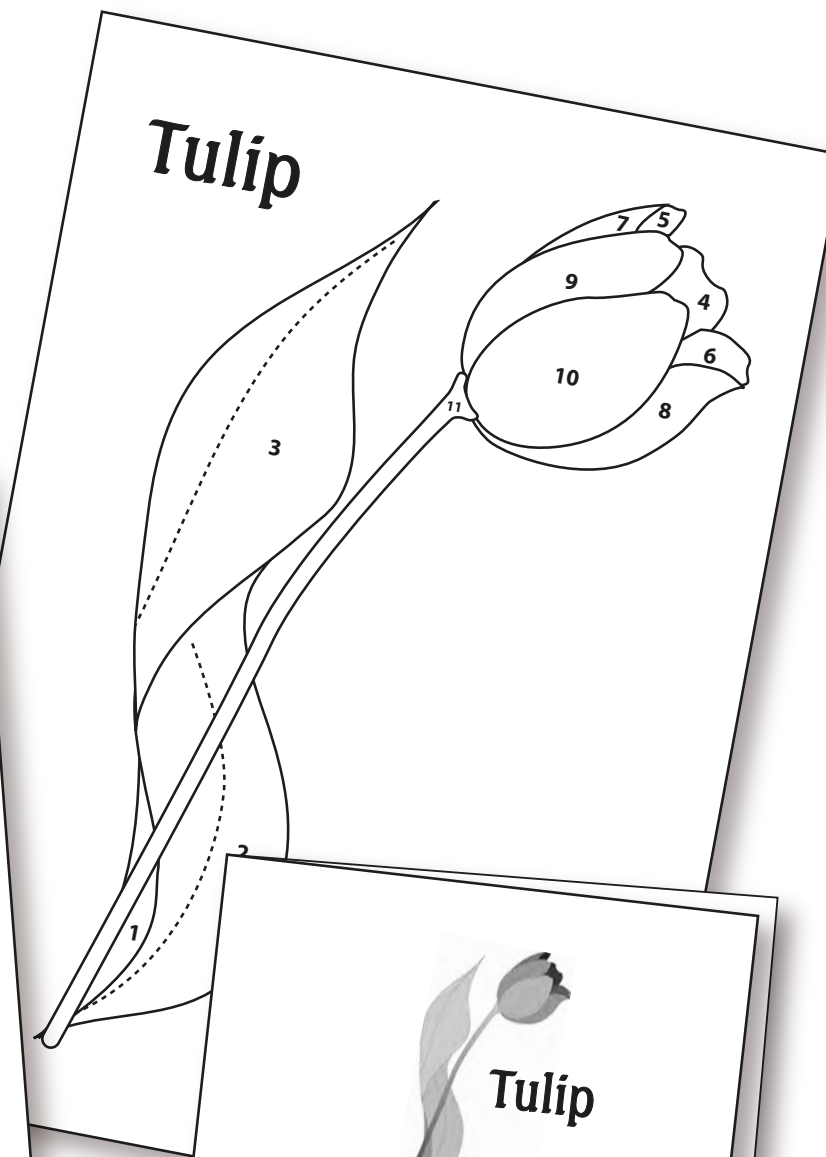
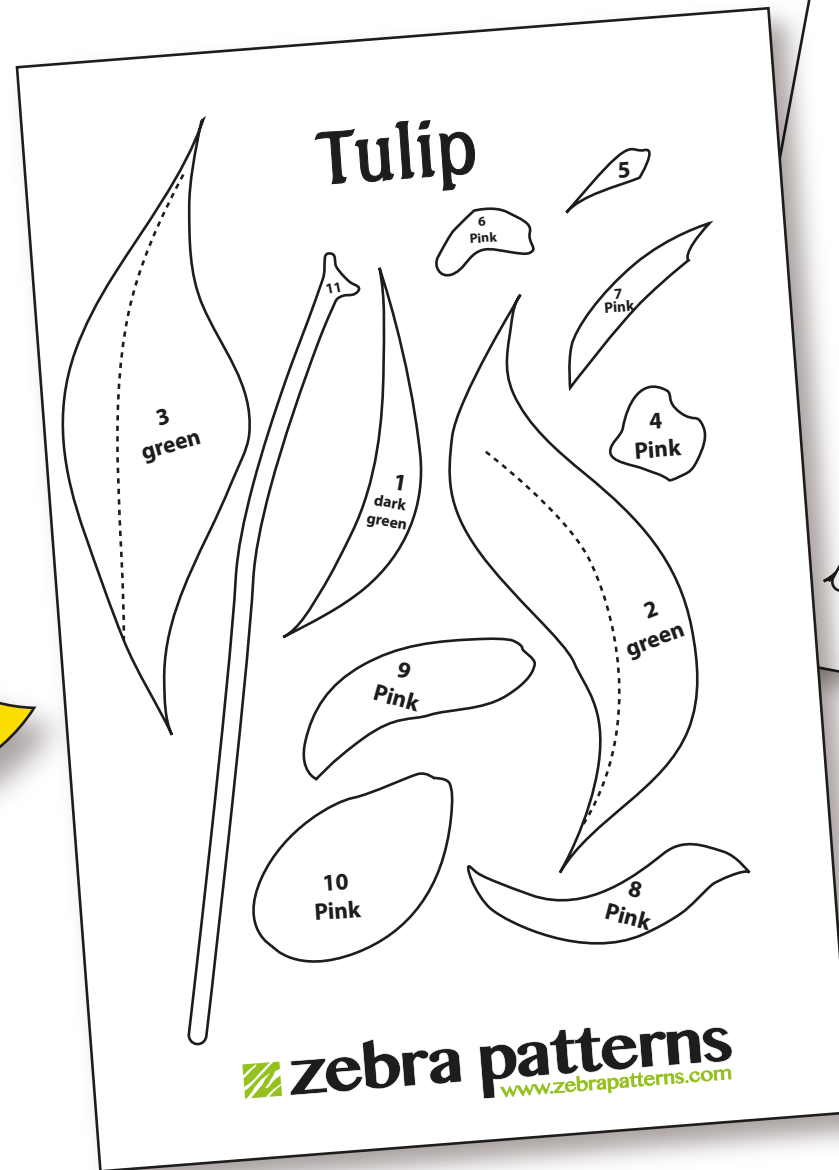
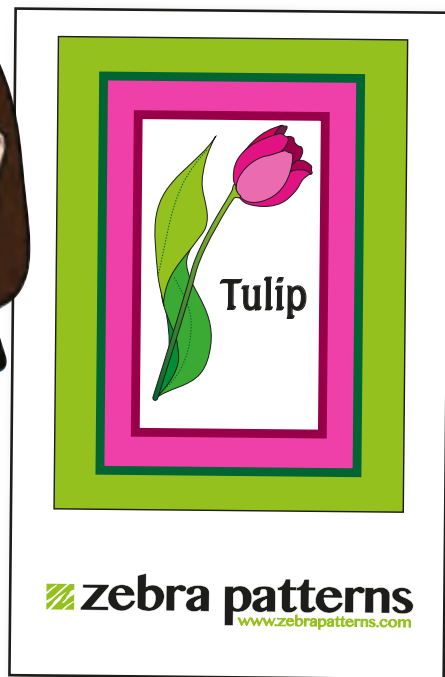


- Choose pattern
- Choose fabric



INSIDE EVERY ZEBRA PATTERN:

- Pattern
- Directions
- Positioning



Debra Gabel's Supply Choices

- Fat Goddess Sheet Press Sheet
- Lite Steam-A-Seam 2 Fusible
- Rowenta 1700W Iron



Non-Stick Pressing Sheet
21" x 27"
or two smaller ones



Lite Steam-A-Seam 2

1. Be sure fusible is not separating from the back sheet.
2. Be sure fusible is not gummy - leaving residue on release sheet.
3. Store fusible in cool dry place.

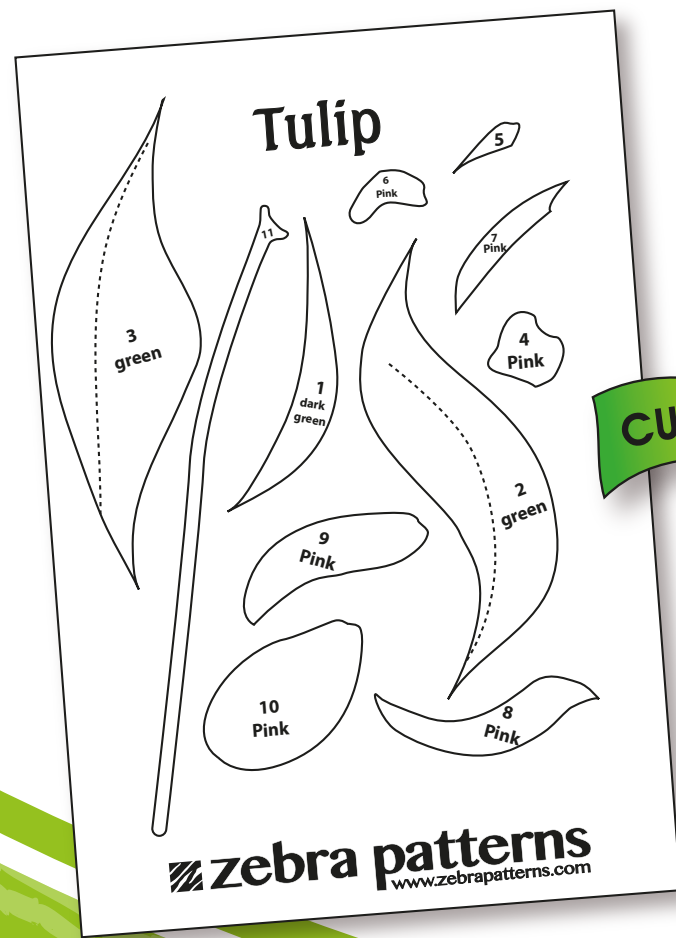
Advantages of L-SAS2

1. Extremely light leaving project flexible
2. Tacky when top release paper is removed
3. Tack allows pieces of fabric to stay put until ironing.
4. Once cut and fused; back of fusible is tacky holding pieces in place.
5. Final fuse is with STEAM - making bond permanent.

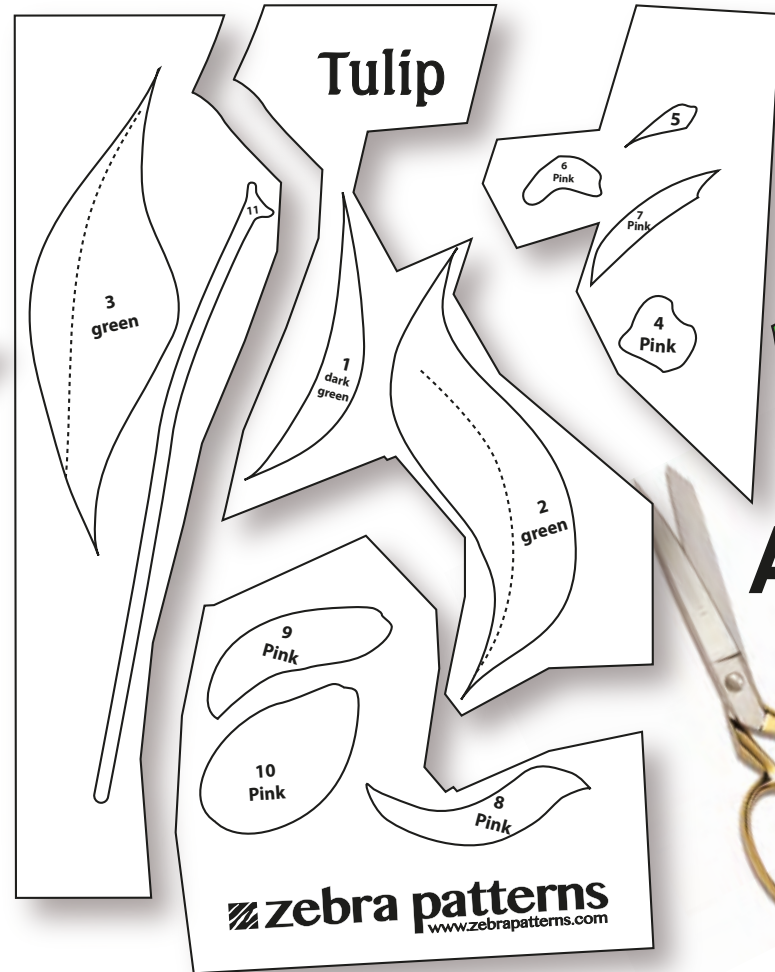
Prep for fusing

- A. Rough cut apart pattern
- B. Put like color pieces together
- C. Rough cut fabric for each color

NO TRACING!



CUT APART



Rough Cut Fabric



B

C

- Repeat: all pieces
- Collect all rough cuts

Fusing

- Place fabric pieces on fusible

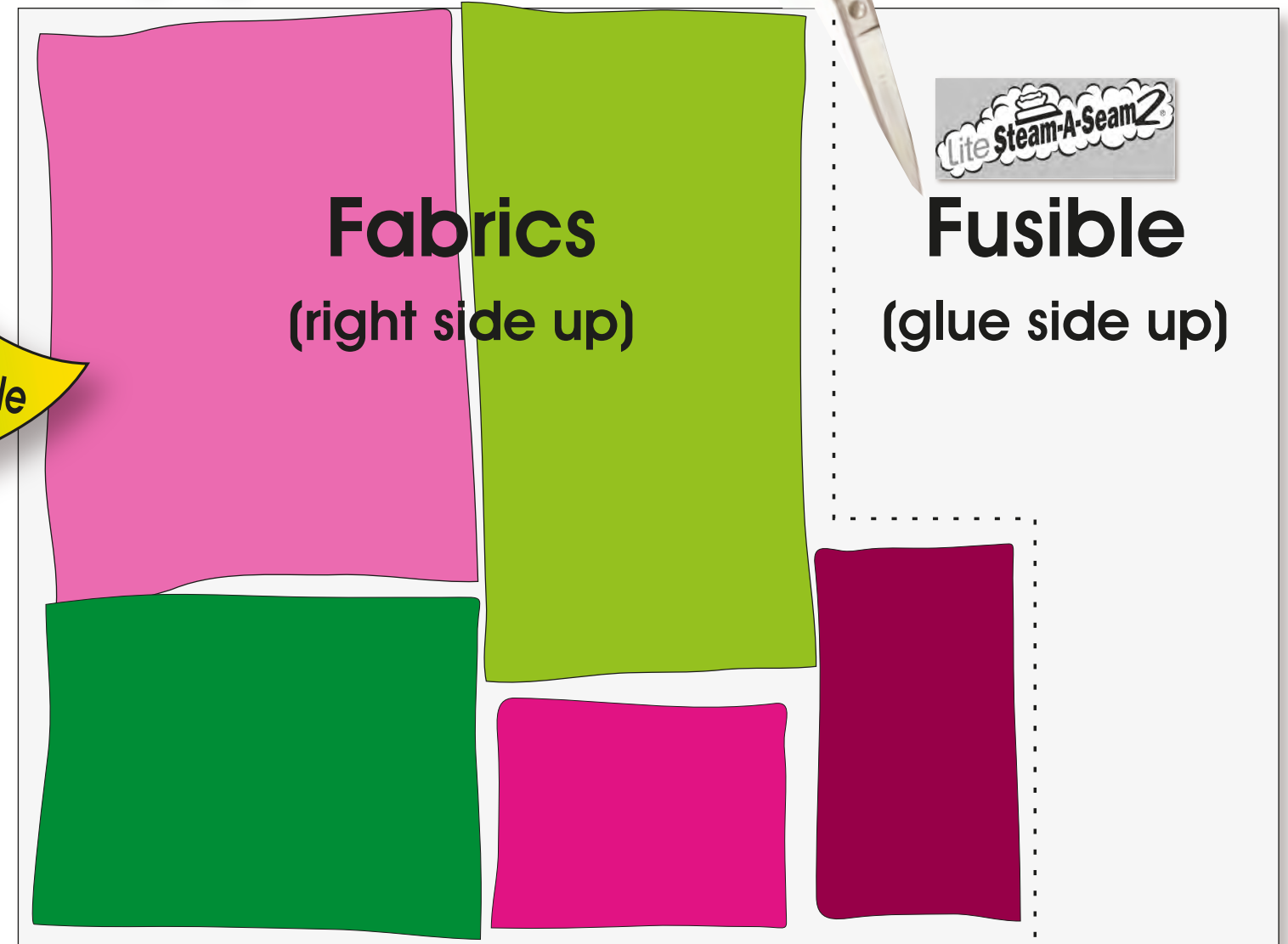
NO REVERSING!
Everything positions UP!

Trim
excess
fusible



Rough Cut Fabric
for Fusing

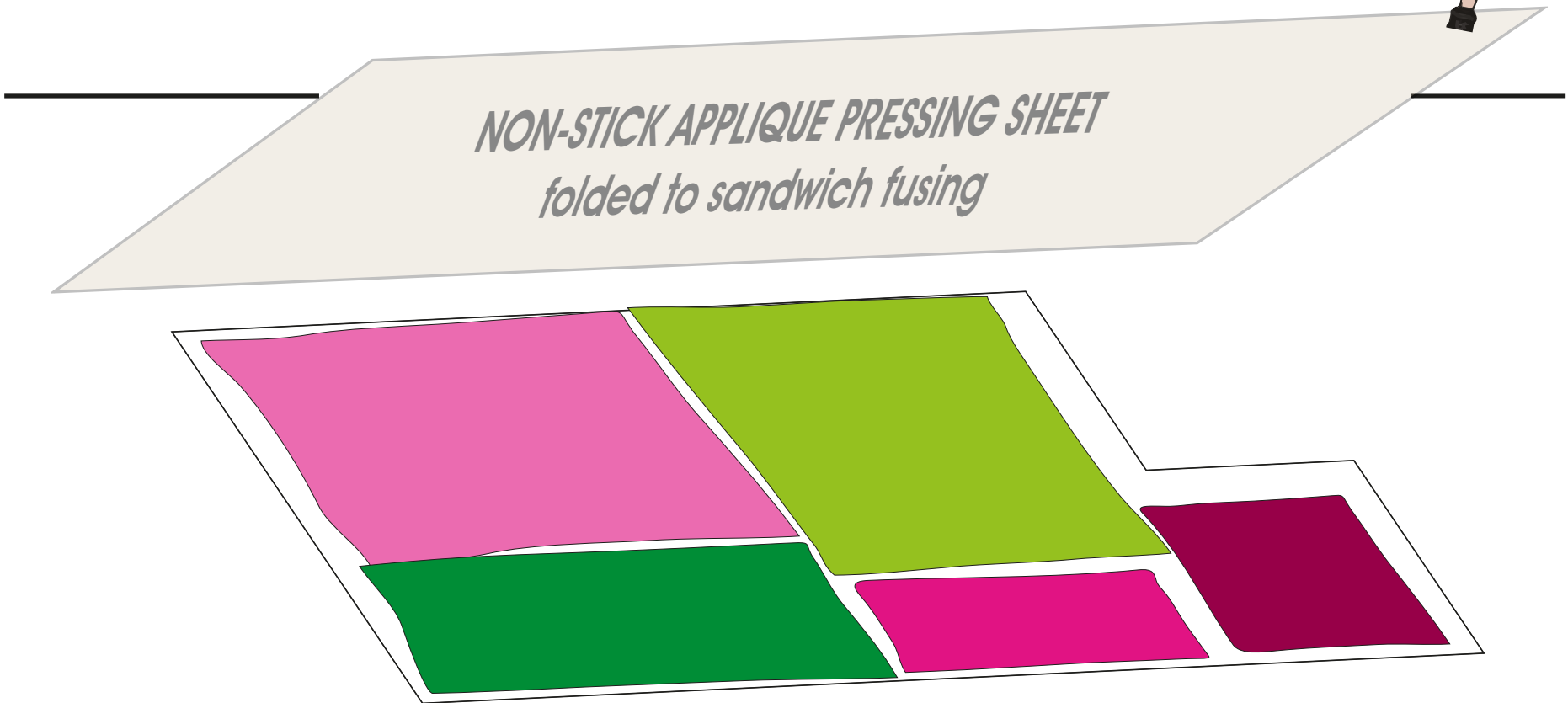
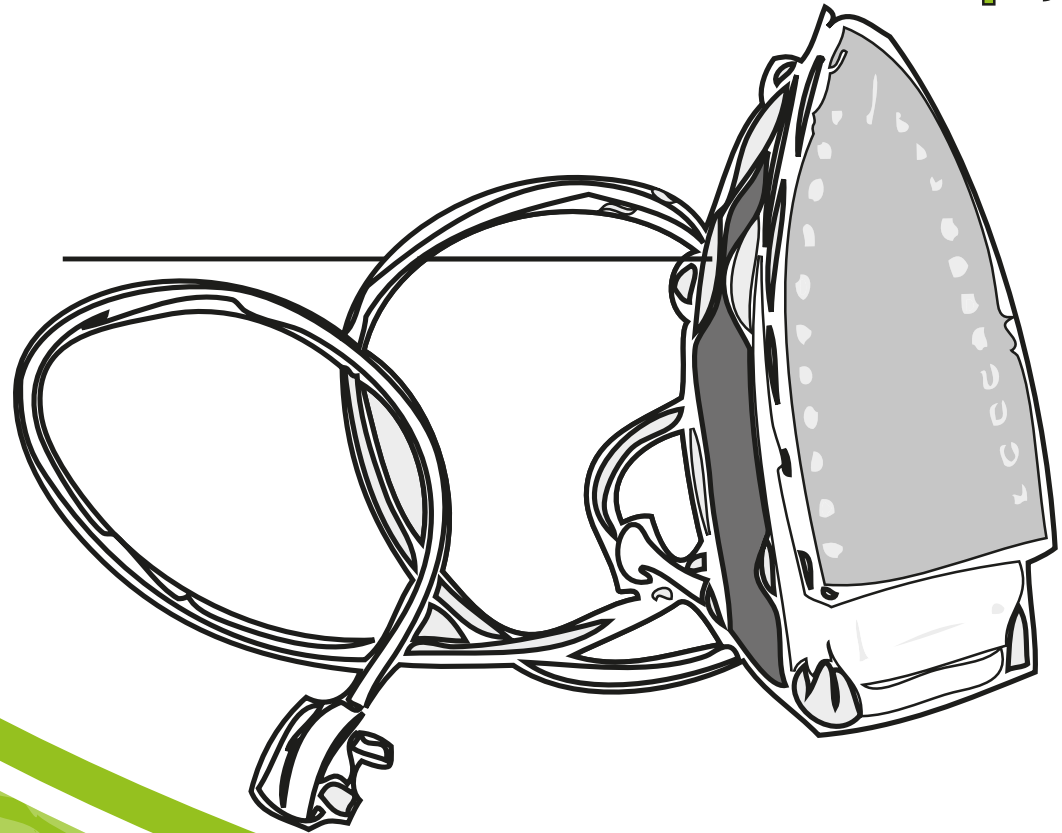
Fabric on Fusible



Ironing

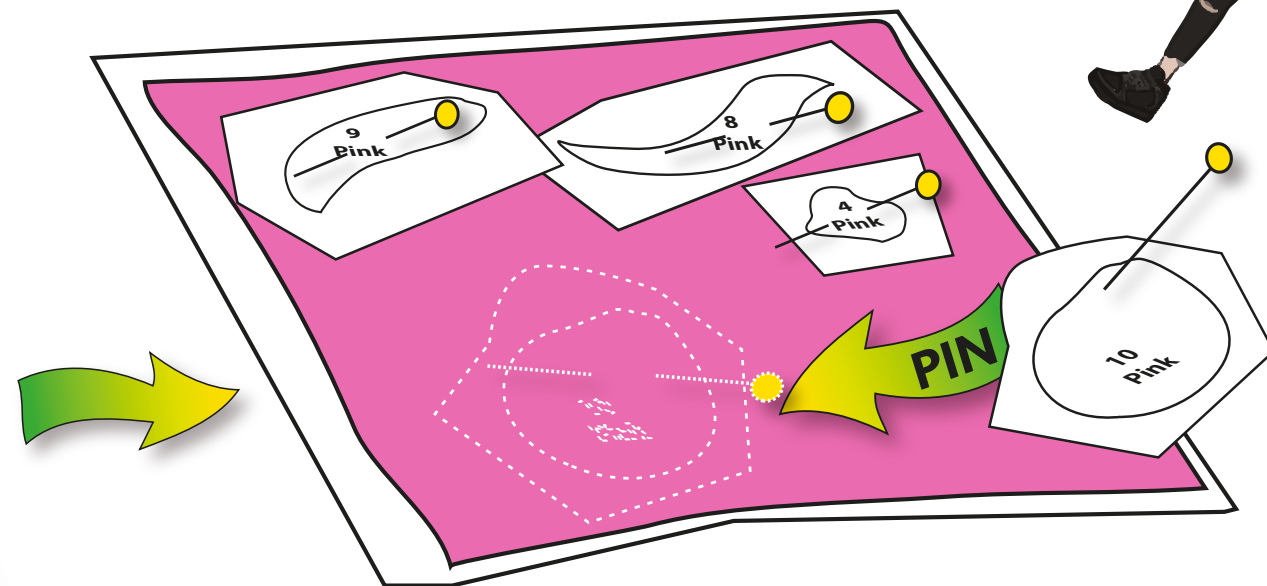
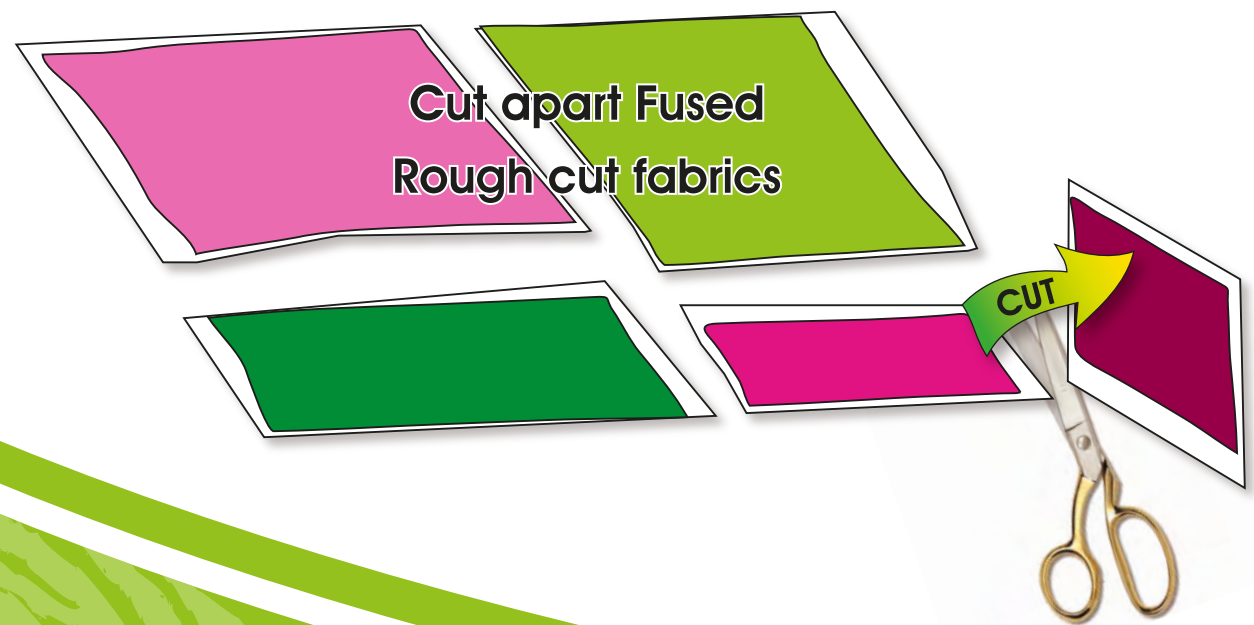
- Make non-stick pressing sheet sandwich with fabric to be fused in center of sandwich.
- Iron sandwich on top, flip sandwich and iron bottom

NO REVERSING!
Fabric and fusible positions UP!



Pinning Pattern

- Rough cut apart fused fabrics
- Match fabrics to rough cut pattern pieces
- Pin paper pieces to fused fabric
- Cut out pieces on paper pattern lines
- Leave paper patterns and pins in place
- **Clean Pressing Sheet**



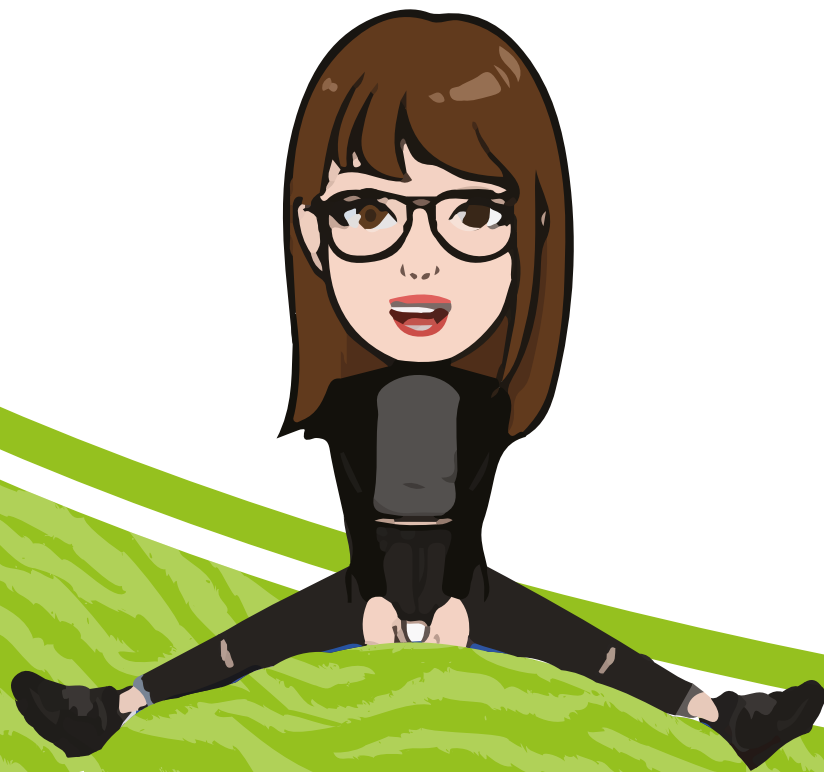
**EVERYTHING
UP!**

Pattern, fabric,
fusible: ALL UP!



GATHER **5** PLASTIC BAGS FOR:

1. Whole Project and Scissors
2. Fused Pieces to Cut
3. Finished Cut Pieces
4. Scrap Fused Pieces
5. Trash

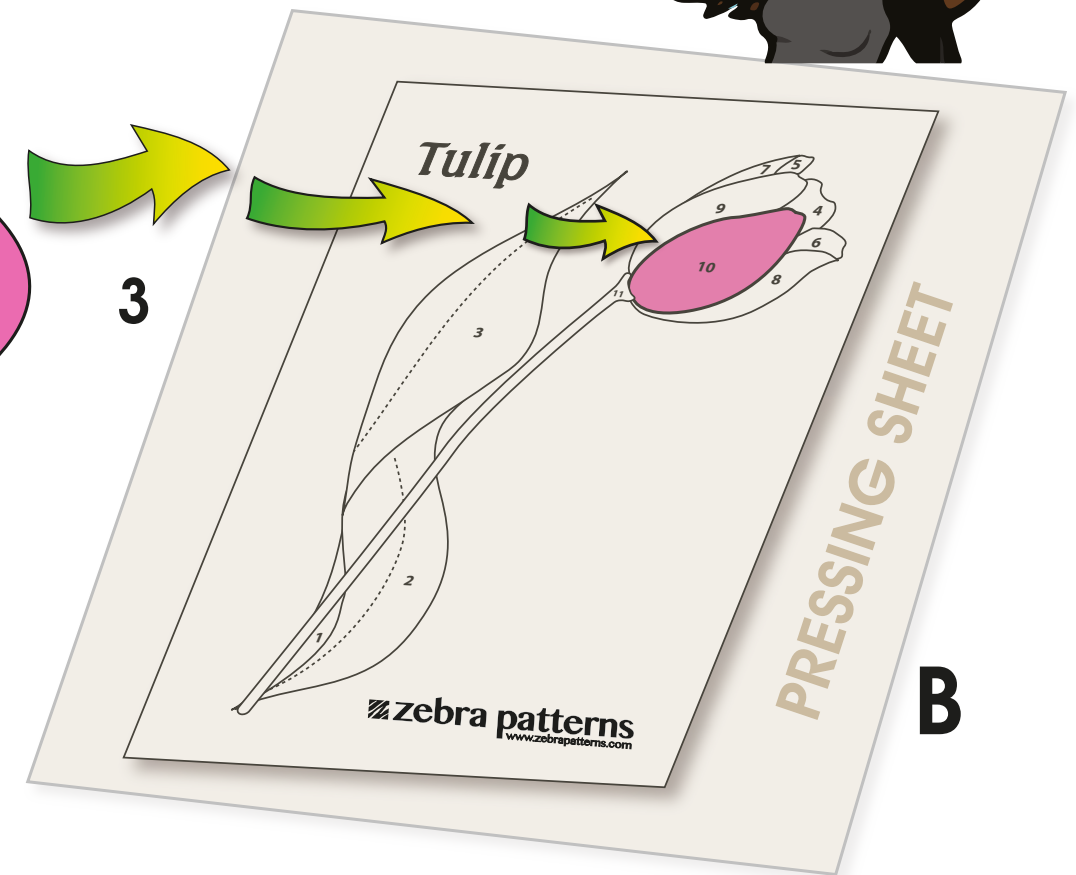
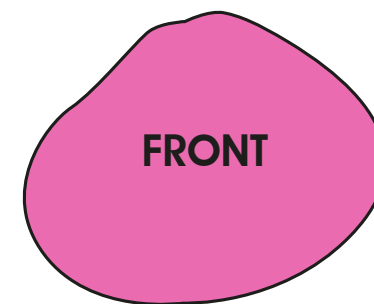
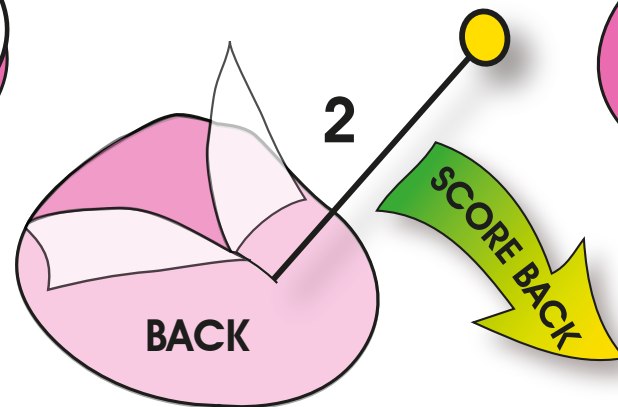
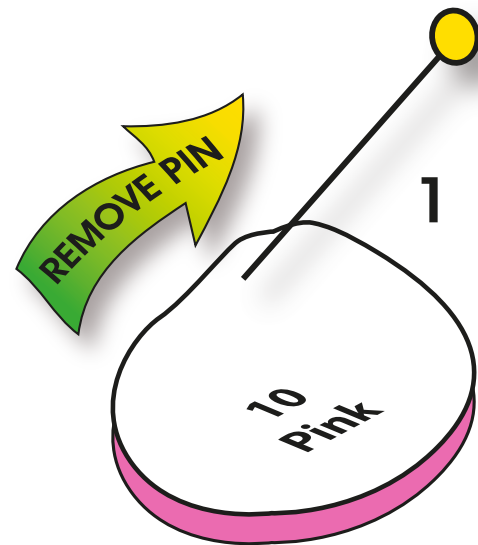
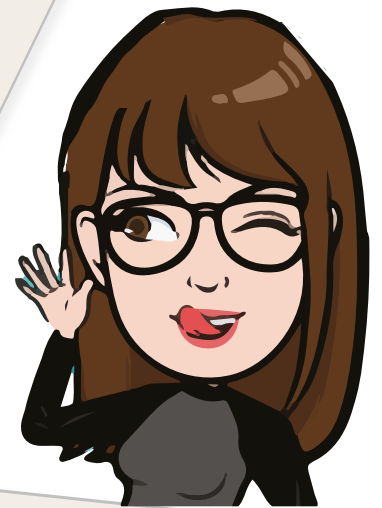
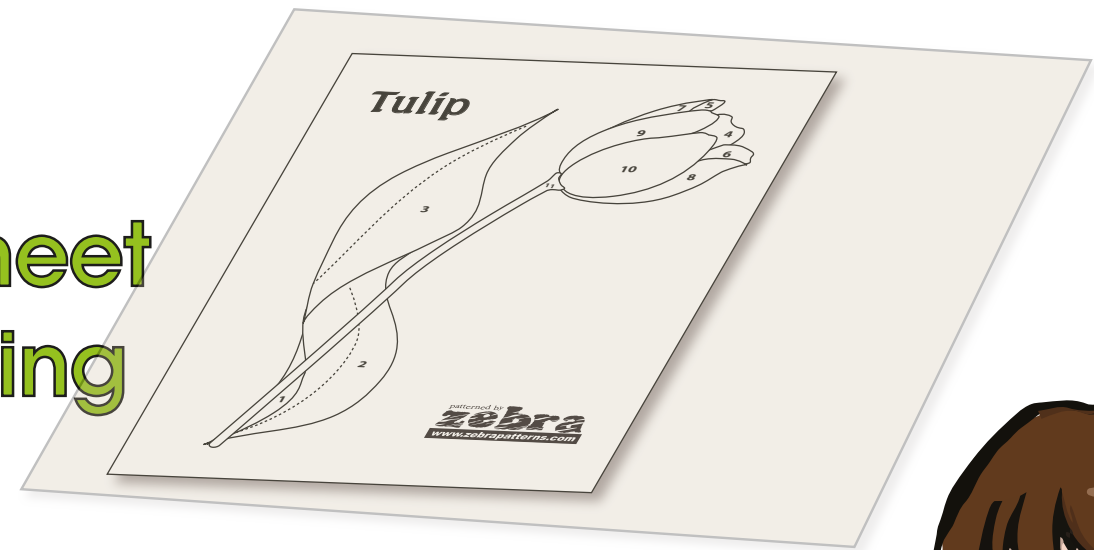


Assemble Pieces

A. Lay Positioning Sheet **UNDER** Pressing sheet

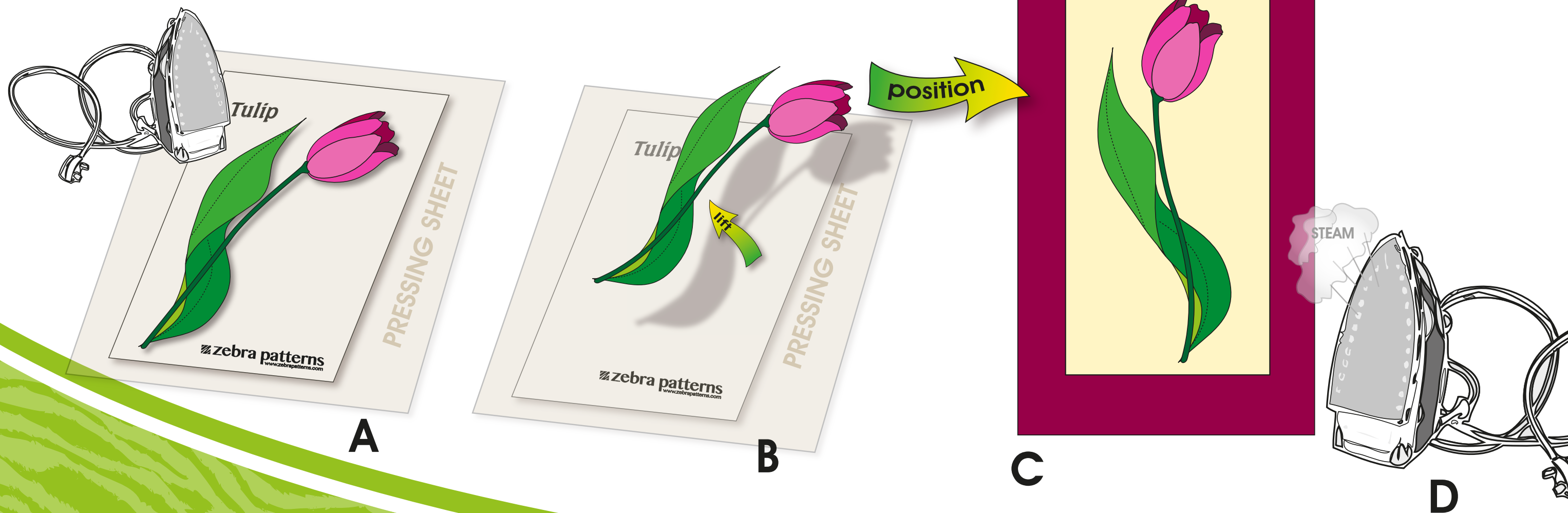
B. Matching numbers of piece to positioning

1. Remove Pin
2. Remove fusible paper (Tip: use pin and score back)
3. Position pieces one at a time until complete



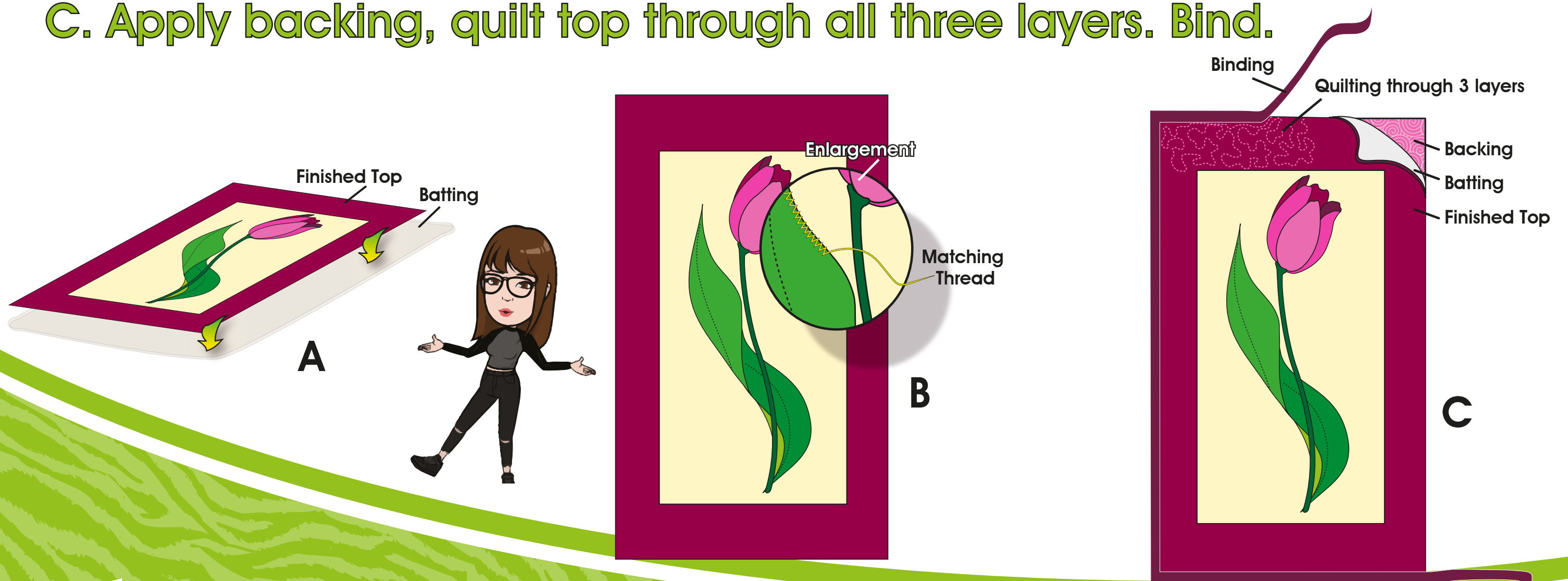
Iron Assembled Applique

- A. Iron assembled applique together with dry iron
- B. Carefully remove applique from pressing sheet
- C. Position applique on background
- D. Iron in position on fabric - with steam



Position Batting under top

- A. Lay finished top over **batting only** (the batting is the stabilizer)
- B. Stitch around all raw edges with matching color thread.
Use zig-zag, satin, button hole, straight or decorative stitch to anchor raw edges of fabric.
- C. Apply backing, quilt top through all three layers. Bind.

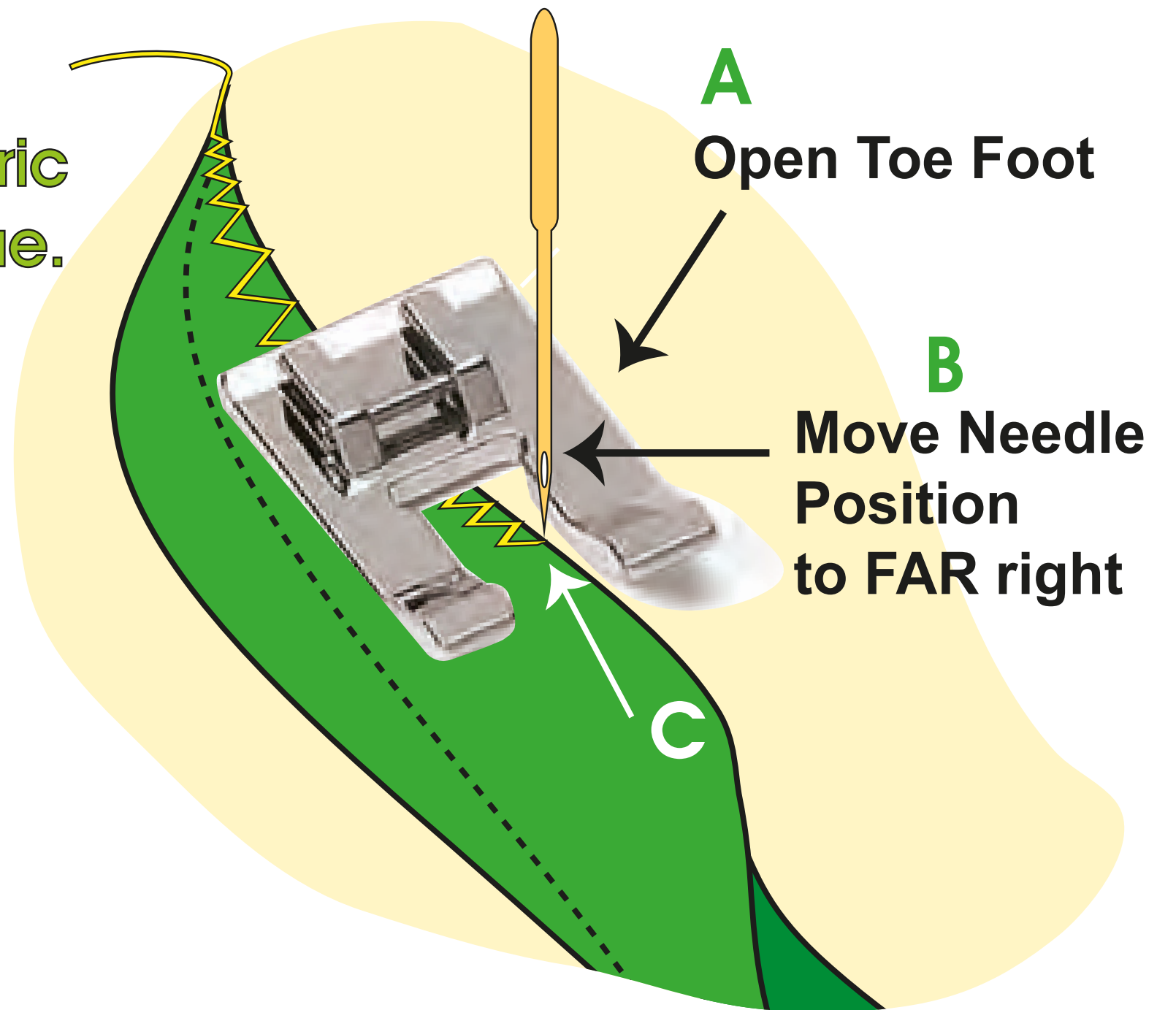


Raw Edge Stitching

A. Use OPEN TOE foot

B. Move Needle to FAR right

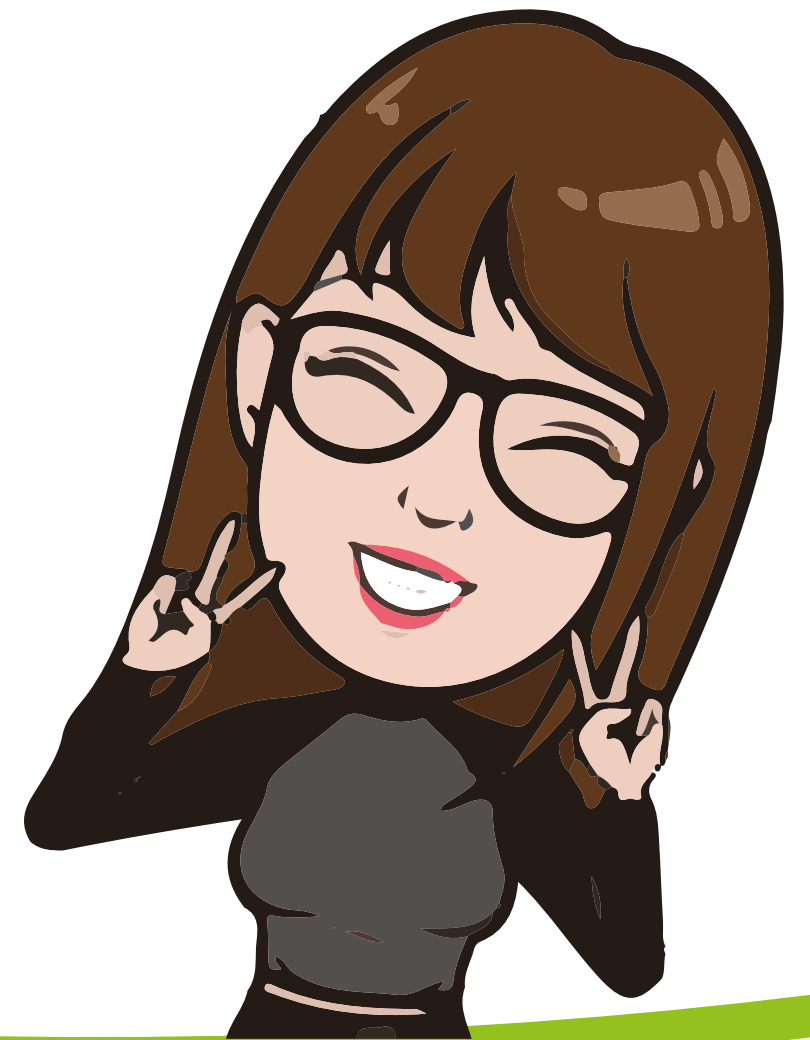
C. Pierce Fabric just onto back fabric and take main bite from applique.



Thanks

 **zebra**
patterns
www.zebrapatterns.com

Leland, North Carolina



 **zebra patterns**
www.zebrapatterns.com

Debra Gabel

Credits and Sponsors



Attached Inc
Greater New York City Area

All copy, illustrations and content by Debra Gabel of Zebra Patterns

All Rights Reserved.

No portion of this presentation can be copied or reproduced without written permission from Debra Gabel/Zebra Pattern Co.

