



Partner for Test & Measurement
Equipment Services and Data Solutions

Air Sampling Pumps

Air/Gas Monitoring



Gastec

Gastec Polytec Tubes for Simultaneously Detecting Gases

Pine Item #

DESCRIPTION:

Nextteq's complete line of Gastec Polytec Tubes expedite analysis by simultaneously measuring a variety of gases during a single test session. Each highly sensitive, semi-quantitative tube can detect from 9 to 15 chemicals, providing cost-effective monitoring and chemical identification.

Gastec's detector tubes offer advanced technology, providing more accurate and reliable analysis with lower standard deviation. A direct-read scale printed on each tube means faster sampling time with no confusion, dual scales, or concentration charts. No extra equipment, lab analysis, or testing is necessary.

Polytec Tubes are ideal for HazMat operations, fire site re-entry testing, and confined space entry analysis.

With no batteries or electric power required, they are intrinsically safe and ready to use anytime, anywhere.

You can rely on Gastec quality. Gastec systems are designed, manufactured, and calibrated to work together so you know you are getting accurate readings. Gastec operates an ISO-9001 certified facility.



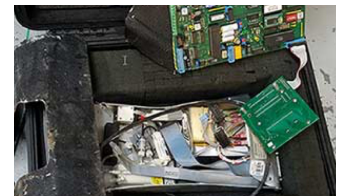
Local Delivery Pick-up



In-Stock Equipment



Repair & Calibration



Rental Protection Plan

Contact a Pine branch near you to request a quote or place an order

VISIT OUR U.S. AND CANADA WEBSITES TO FIND A BRANCH NEAR YOU

United States

www.pine-environmental.com

Canada

www.pine-environmental.ca