



Partner for Test & Measurement
Equipment Services and Data Solutions

Air Sampling Pumps Air/Gas Monitoring



Gastec

Gastec Inline Sampling Tubes for Testing LP-Gas

Pine Item #

DESCRIPTION:

Nextteq's line of Gastec Inline Sampling Tubes provide an easy and economical method for detecting ethylmercaptan in liquid petroleum gas (LP-gas). Simply place a tube into the inline sampling point and allow the gas to flow through the tube. Sampling is complete in just 1 minute.

Gastec's detector tubes offer advanced technology, providing more accurate and reliable analysis with lower standard deviation. A direct-read scale printed on each tube means faster sampling time with no confusion, dual scales, or concentration charts. No extra equipment, lab analysis, or testing is necessary.

Gastec Inline Sampling Tubes are intrinsically safe and ready to use anytime, anywhere.

You can rely on Gastec quality. Gastec systems are designed, manufactured, and calibrated to work together so you know you are getting accurate readings. Gastec operates an ISO-9001 certified facility.



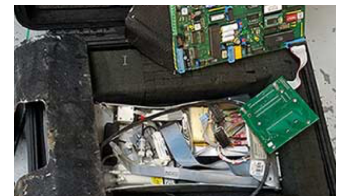
Local Delivery Pick-up



In-Stock Equipment



Repair & Calibration



Rental Protection Plan

Contact a Pine branch near you to request a quote or place an order

VISIT OUR U.S. AND CANADA WEBSITES TO FIND A BRANCH NEAR YOU

United States

www.pine-environmental.com

Canada

www.pine-environmental.ca