



Geotech

## Geotech FieldSink™ Environmental Water Sampling Station

Pine Item #79827

### DESCRIPTION:

The patented FieldSink™ Environmental Sampling Station is a portable system that offers hands-free sample collection and preparation in the field. It is simple, yet innovative design revolutionizes the industry standard of tried and true low-flow and purge and sample methods. Engineered with sample integrity and quality control in mind, FieldSink™ improves efficiency and safety while reducing waste.

### FEATURES:

- Improves sample integrity and quality control
- Increases productivity through sampling efficiency
- Reduces fieldwork labor and associated costs
- Contains risk of contaminant releases to the environment
- Consolidates components into a single, portable package
- Provides a hands-free sampling experience
- Adaptable for pumps that use 1/4", 3/8", and 1/2" OD tubing
- Compatible with most standard 5 gal. pails
- Made with virgin HDPE materials – PFAS-Free
- 100% recyclable materials
- Made in the USA

### APPLICATIONS:

- Public and municipal health drinking water
- Water sampling of rivers, lakes, ponds, ocean, surface, and groundwater
- Stormwater
- Well water
- Factories and small businesses
- Wastewater
- Marine applications

### COMPLETE FIELDSINK KIT INCLUDES:

- 1ea. Discharge Container – Translucent 5 gal. Bucket, Graduated, with Foam Grip
- 1ea. Workstation Base – Serves as a work area with bottle and tool storage
- 1ea. Drain Tray – Flat working platform for sample bottles and flow cell
- 1ea. Tube Guide – Height and side-to-side adjustable sample tube management
- 3ea. Splash Guards – Sized to individually fit 1/4", 3/8" and 1/2" OD Tubing
- 1ea. Stability Cord (3 ft.) and Cord Lock

**FieldSink being used as a low-flow station. Geopump peristaltic pump, tubing and sample bottles not included.**

**Contact a Pine branch near you to request a quote or place an order**

VISIT OUR U.S. AND CANADA WEBSITES TO FIND A BRANCH NEAR YOU

**United States**

[www.pine-environmental.com](http://www.pine-environmental.com)

**Canada**

[www.pine-environmental.ca](http://www.pine-environmental.ca)

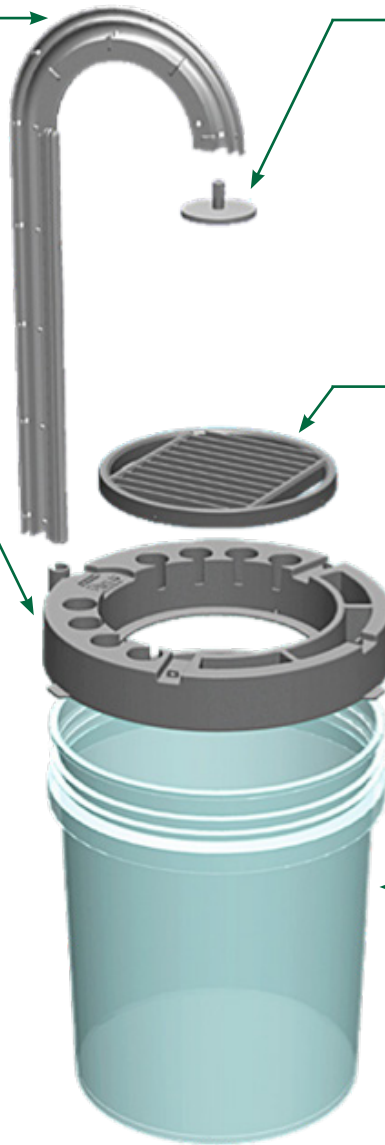
## Product Specifications

### TUBE GUIDE:

- Made of virgin HDPE
- Engineered to secure 1/4", 3/8", & 1/2" O.D. tubing
- Equipped with incremental tabs to snap tubing in and out with ease
- Engineered to snugly sleeve into Workstation Base with adjustability up and down and side to side
- Hole provided at end for stabilization anchoring to Workstation Base

### WORKSTATION BASE:

- Made of virgin HDPE
- Engineered to fit most standard sized 5 gal. pails
- Three finger tabs provided for ease of removal
- Designed to receive Tube Guide and Drain Tray
- Winged reinforcement at rear sleeve for added support
- Single holder to stage bottle caps up to standard wide-mouth in size
- Three general purpose holders for miscellaneous equipment such as writing utensils and hand tools
- Eight individual holders for staging standard sized vov vials
- Three outrigger anchor points to assist in Tube Guide stabilization



### SPLASH GUARD:

- Made of virgin HDPE
- Designed to eliminate splash back during filling operations
- Three sizes designed to accommodate 1/4", 3/8", & 1/2" O.D. tubing
- Engineered to maintain position on top of sample bottle

### DRAIN TRAY:

- Made of virgin HDPE
- Engineered to lightly snap into Workstation Base
- Specially designed support slats optimally angled and spaced to reduce splash back
- Two viewports into Discharge Container for purge water observation
- Footprint sized to stage flow cell during purging and two standard sized 1-Liter bottles side by side during sampling

### DISCHARGE CONTAINER/BUCKET:

- Made of virgin HDPE
- Calibrated in gallons and liters (not shown)
- Translucent for exterior purge measurement observation
- Foam grip on handle (not shown) for added comfort during transport and emptying operations

### FIELDSINK™ INSTRUCTIONS

1. Position the bucket handle to the front of the bucket towards the FieldSink logo before installing the Workstation Base.
2. When installing the Workstation Base, orientate the sleeve for the Tube Guide towards the rear, center of the bucket, otherwise the bucket handle will obstruct the vertical movement of the Tube Guide. As a guide, from a top-down perspective, align the two vial holders at the center of the Workstation Base, on the right and left side, to where the bucket handle attaches to either side of the bucket.
3. Install the Drain Tray into the Workstation Base with the peakshaped deflection slats aligned front to back (vs. right to left). The Drain Tray is designed to lightly snap into the Workstation Base to assist with proper positioning.
4. If using a Push-to-Connect Elbow fitting, the end of the tubing should extend approximately 1-1/4 inches from the outlet end of the Tube Guide (with the elbow snug to the inlet end of the Tube Guide). To accommodate this, the following tubing lengths are recommended: 29-1/2 inches for the 1/4 inch elbow, 30-1/4 inches for the 3/8 inch elbow, and 28-5/8 inches for the 1/2 inch elbow.
5. To remove tubing from the Tube Guide, gently release the end of the tubing from the last holding tab at the outlet end of the Tube Guide. Grasp the freed end of the tubing, closest to the next corresponding tab, and gently twist the tubing around the tab. Repeat this process at each tab until the tubing is completely free of the Tube Guide.



**Video:**  
<https://youtu.be/445iOhxk91s>



Local Delivery Pick-up



In-Stock Equipment



Repair & Calibration



Rental Protection Plan