



Ludlum

Ludlum M-3 Survey Meter W/44-2

Pine Item #61218

DESCRIPTION:

The Model 3 is a portable radiation survey instrument with four linear ranges used in combination with exposure rate, or cpm meter dials.

The instrument features a regulated high-voltage power supply, unimorph speaker with audio ON/OFF capability, fast-slow meter response, meter reset button and six-position switch for selecting battery check or scale multiples of X0.1, X1, X10 and X100.

Each range multiplier has its own calibration potentiometer.

FEATURES:

- Gamma Radiation survey.
- NIST-traceable certificate of calibration.



Contact a Pine branch near you to request a quote or place an order

VISIT OUR U.S. AND CANADA WEBSITES TO FIND A BRANCH NEAR YOU

United States

www.pine-environmental.com

Canada

www.pine-environmental.ca

Product Specifications

| | |
|--------------------------|---|
| Scintillator | 1\'' diameter x 1\'' thick sodium iodide |
| Range | 60 keV to 1.25 MeV |
| Sensitivity | Typically 175 cpm/ μ R/ hr (137 Cs gamma) |
| Operating Voltage | 500 to 1200 volts |
| Dimensions | 2\'' diameter x 7.3\'' long |
| Weight | 1 lb. |
| Multipliers | Xo.1 X1 X10 X100 |
| Audio | Built-in unimorph speaker with ON/OFF switch (greater tha 60dB at 2 feet) |
| Threshold | Fixed at 30 mV +/-10 mV |
| Response | Fast (4 seconds) or Slow (22 seconds) from 10 to 8=90% of final reading. |
| Dimensions | US: 6.5 x 8.5\'' x 3.5\'' Metric: 16.5 x 21.6 x 8.9 cm |
| Weight | US: 3 lbs Metric: 1.36 kg |



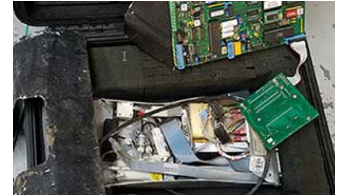
Local Delivery Pick-up



In-Stock Equipment



Repair & Calibration



Rental Protection Plan