



Casella CEL

Casella CEL-350IS dBadge Personal Noise Dosimeter

Pine Item #54502

DESCRIPTION:

The CEL-350 dBadge Series is the first compact noise badge product to be designed with a display. This internal display makes it easy to perform calibration, provides status information and shows key measured data.

The dBadge has a unique 'fuel gauge' to display memory and battery status, ensuring the exact remaining battery and memory capacity can be viewed on the display. Also, a unique feature of the dBadge is the alarm function.

FEATURES:

- Intrinsically Safe
- 28-hour battery life fully charges in 90 minutes
- Simple auto-calibration function
- Run duration timers
- Simultaneous 'C' and 'A' weighted measurements
- Large memory capacity 180 hours
- Compact, rugged (rubber over-molded) design weighs only 71g
- No cables to damage or get in the way

APPLICATIONS:

- Complete shift exposure measurements
- Task-based measurements
- Measurements according to ISO9612: 2009
- Selection of hearing protection
- Measuring personal noise exposure
- Ensuring compliance with Workplace Noise Regulations

Contact a Pine branch near you to request a quote or place an order

VISIT OUR U.S. AND CANADA WEBSITES TO FIND A BRANCH NEAR YOU

United States

www.pine-environmental.com

Canada

www.pine-environmental.ca

Product Specifications

Linear operating range	65.0 to 140.3dB RMS
Peak measurement range	95.0 to 143.3dB Peak
Frequency weightings RMS	A (and 'C' on CEL-352)
Frequency weightings Peak	C, A, Z (Linear)
Time weightings	Slow, Fast & Impulse
Amplitude weightings	Q=3 & Q=5
Selectable thresholds	2 (70 to 90dB), selectable in 1dB steps
Selectable criterion	1 (70 to 90dB), selectable in 1dB steps
Memory capacity	(180 Hours of measurements)
Default modes	ISO or OSHA
Calibration information	Calibration dates, times and levels
Run duration timer	Selectable up to 12 hours in 30min intervals
Security	Lock via keys
Power supply	Internal NiMH cells
Battery life	28 Hours run capacity
Size mm (in)	80x47x52 (3.1x1.8x2.0) inc windshield
Weight g (oz)	71g (2.5)
Data storage	Non-volatile, 10 years of storage
Display	Graphic LCD 96 x 26 pixels
Output (PC)	Infra-red to USB (PC) cable to Insight Software



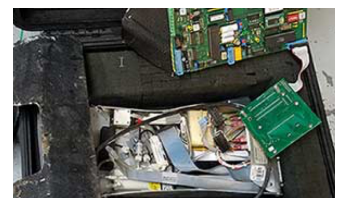
Local Delivery Pick-up



In-Stock Equipment



Repair & Calibration



Rental Protection Plan