

Mala Geoscience

MALA CX12 Concrete Radar

Pine Item #54121

DESCRIPTION:

The MALA CX Concrete imaging system is an easy to use, Ground Penetrating Radar (GPR) system that is designed for non-destructive investigation and imaging of concrete and other structures. Construction professionals involved in the cutting, coring, or drilling of concrete structure require a safe and reliable means of inspecting work areas to locate and identify hidden features that could cause damage to machinery, or pose a danger to the operator or structure during these activities.

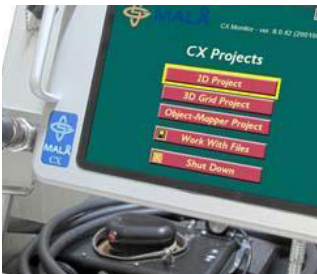
The MALA CX-12 system allows you to scan concrete structure simply and safely in different measurement modes such as; 2D, and 3D Grid- and Object Mapper- which projects and presents data clearly for real-time data acquisition and analysis. The MALA CX-12 comes with 3D Vision software which was primarily designed to enhance processing and visualization of GPR data. The software improves the 3D Grid Project functionality and allows the user to manage and adjust the 3D Grid Project data collected while using the 3D system.

FEATURES:

- Detects metal and non-metallic objects
- Detects voids
- Locates and identifies 50/60Hz power cables
- Project modes for 2D/3D Grid and Object Mapper/ Software.
- Measure depth of cover or slab thickness
- Locate and map reinforcing support structure
- Quality assessment & control
- Measure layer thickness
- Stand-alone Windows processing software

APPLICATIONS:

- Concrete Investigation
- Post Tension cables
- Mapping Steel Reinforcement



Contact a Pine branch near you to request a quote or place an order

VISIT OUR U.S. AND CANADA WEBSITES TO FIND A BRANCH NEAR YOU

United States

www.pine-environmental.com

Canada

www.pine-environmental.ca

Product Specifications

Power Supply	External 12v or Li-ion 12V/12Ah Battery
Operating time	6h with Battery pack
Operating temp	-20 to + 50 degrees celsius
Display	10.4 color TFT Ultra-Hi-Brite LCD Monitor
Antenna	1.6GHz Antenna
Data Download	USB Storage Device. Data can be transferred to a computer or laptop device
Dimensions	US: 22 x 18 x 10 in. Metric: 558 x 457 x 254 mm



Video:
<https://youtu.be/dbIUqZw-Br-A>



Local Delivery Pick-up



In-Stock Equipment



Repair & Calibration



Rental Protection Plan