



Trimble

## Trimble GeoXH

Pine Item #51462

### DESCRIPTION:

Offering the latest in surface positioning technology, Pine now offer the Trimble GeoXH handheld. Trimble's top-of-the-line solution for high accuracy GIS data collection. Engineered with H-Star technology, the GeoXH handheld delivers the subfoot (30 cm) accuracy required by electric and gas utilities, water and wastewater services, land reform projects, and other applications where on-the-spot positioning is crucial.

### FEATURES:

- 512 MB onboard memory plus removable SD memory
- Bluetooth and wireless LAN connectivity options
- H-Star technology for subfoot postprocessed accuracy
- Microsoft Windows Mobile 5.0 software allowing maximum flexibility in software choice
- Rugged handheld with all-day battery
- TrimPix technology for wireless camera support

### APPLICATIONS:

- Robotics Solutions
- Mining Solutions
- Precise Positioning
- Geospatial solutions
- Agricultural solutions
- Construction Solutions
- Navigation Guidance
- Marine Solutions

**Contact a Pine branch near you to request a quote or place an order**

VISIT OUR U.S. AND CANADA WEBSITES TO FIND A BRANCH NEAR YOU

**United States**

[www.pine-environmental.com](http://www.pine-environmental.com)

**Canada**

[www.pine-environmental.ca](http://www.pine-environmental.ca)

## Product Specifications

<b>PHYSICAL</b>	NULL
<b>Processor</b>	416 MHz Intel PXA-270 X-Scale processor
<b>Memory</b>	64 MB RAM and 512 MB internal Flash disk
<b>Power</b>	Low (no GPS or backlight) - 1.5 Watts. Normal (with GPS and backlight) - 2.7 Watts. High (with GPS backlight Bluetooth and wireless LAN) - 3.7 Watts (note c)
<b>Battery</b>	Internal 7500 mAh lithium-ion rechargeable in unit 27.8 Watt-hours
<b>ENVIRONMENTAL</b>	NULL
<b>Temperature</b>	Operating: -10 °C to +50 °C (14 °F to 122 °F). Storage: -20 °C to +70 °C (-4 °F to 158 °F)
<b>Casing</b>	Wind-driven rain and dust-resistant per IP 54 standard. Slip-resistant grip shock and vibration resistant
<b>INPUT/OUTPUT</b>	NULL
<b>Communications</b>	Bluetooth (note d) 802.11b wireless LAN USB client v1.1 compliant (note e) via support module Serial via optional DE9 serial clip adaptor Ethernet 10/100 BaseT compatible via support module
<b>Bluetooth Profiles</b>	Client and host support - Serial Port Object Push. Client support only - Dial-Up Networking. Host support only - File Transfer (using OBEX)
<b>Display</b>	Advanced outdoor TFT 240 × 320 pixel 65536 colors with backlight
<b>Audio</b>	Microphone and speaker record and playback utilities
<b>Interface</b>	Touch screen Soft Input Panel (SIP) virtual keyboard. 11 hardware control keys handwriting recognition software. Audio system events warnings and notifications
<b>GPS</b>	NULL
<b>Channels</b>	12 (L1 code and carrier/L2 carrier)(note f)
<b>Integrated real-time</b>	SBAS (note a)
<b>Update Rate</b>	1 Hz
<b>Time to first fix</b>	30 seconds (typical)
<b>Protocols</b>	TSIP NMEA (GGA VTG GLL GSA ZDA GSV RMC)
<b>ACCURACY (HRMS) AFTER DIFFERENTIAL CORRECTION</b>	(note g)
<b>H-Star postprocessed (note h)</b>	With internal antenna - 30cm. With optional Zephyr antenna - 20cm
<b>Code postprocessed</b>	Submeter
<b>Carrier postprocessed (note i)</b>	With 20 minutes tracking satellites - 10cm. With 45 minutes tracking satellites - 1cm.
<b>Real-time (SBAS or external RTCM source)</b>	Submeter
<b>NOTES</b>	(a) SBAS (Satellite Based Augmentation System). Includes WAAS (Wide Area Augmentation System) available in North America only. And EGNOS (European Geostationary Navigation Overlay System) available in Europe only. (b) Serial clip also required. (c) Power
<b>Dimensions</b>	US: 8.5 in / 3.9 in / 3.0 in Metric: 21.5 cm / 9.9 cm / 7.7 cm
<b>Weight (with battery)</b>	US: 1.76 lb Metric: 0.78kg



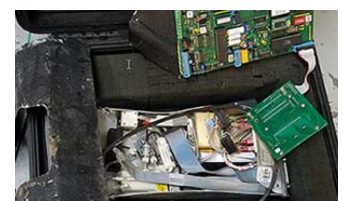
Local Delivery Pick-up



In-Stock Equipment



Repair & Calibration



Rental Protection Plan