



Operating Instructions for Electric Mini Keg-Top Dispenser

Please read this manual carefully before using the product

WARNING

- Do not knock or drop this product, repeated knocks may cause internal damage.
- If not used for a long time, please do not store it in a place with high temperature and high humidity.
- Do not disassemble, replace or repair this product by yourself.
- Do not charge this product with a voltage exceeding the specified voltage.
- When the product is fully charged, please make sure to unplug the charging cable in time.
- Do not throw this product into fire to avoid explosion.
- Keep children away from the product.
- Please use this product at room temperature 0-40°C.
- Do not charge the product on the surface of flammable objects such as carpets and quilts.
- If the product cannot be charged, please replace the charging head or the charging cable and try again.
- If the battery leaks and the body accidentally comes into contact with the liquid, please rinse it off or seek medical help, do not continue to use this product.
- If the product is abnormally high temperature or deformed during the charging process, please stop charging immediately and contact customer service for processing.

Hazardous substances restricted use identification list

components	Hazardous substances					
	(Pb)	(Hg)	(Cd)	(Cr(VI))	(PBB)	(PBDE)
Plastic parts	O	O	O	O	O	O
Metal parts	O	O	O	O	O	O
USB cable	X	O	O	O	O	O
PCB board	X	O	O	O	O	O
Battery	X	O	O	O	O	O

This form is compiled in accordance with SJ/T 11364
 O: Indicates that the content of the hazardous substance in all homogeneous materials of the part is below the limit requirement specified in GB/T 26572.
 X: Indicates that the content of the hazardous substance in at least one of the homogeneous materials of the part exceeds the limit requirement specified in GB/T 36572.
 Remarks: Among the parts marked with "X" above, some of the hazardous substances contained in excess of the standard are due to the limited technical level of the industry, and it is temporarily impossible to replace or reduce the quantity.

10

Hazardous substances restricted use mark

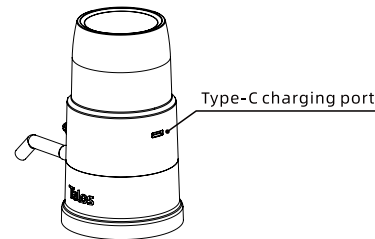
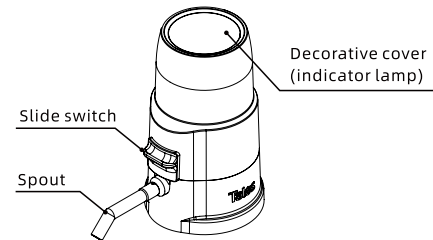
Ten years of environmental protection use period: It means that the hazardous substances in this product will not leak or change, and the user will not cause serious pollution to the environment or cause serious damage to other persons or properties when the user uses the product normally under the conditions described in the product manual.

Arrow cycle symbol: indicates that this product can be recycled. After the expiry date or after maintenance and unable to work normally, it should not be discarded at will, and it should be handed over to formal recycling channels and qualified enterprises for disposal of waste electrical and electronic products for disposal.

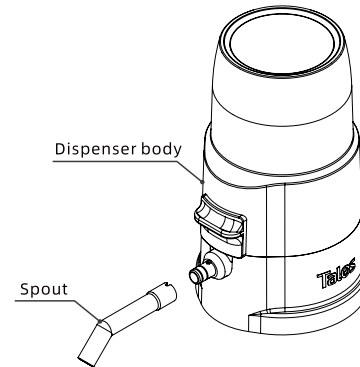
Components

Electric Mini Keg-Top Dispenser, Type-C charging cable, Manual

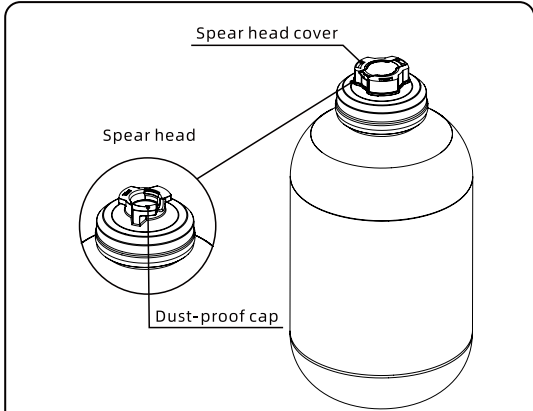
Product description



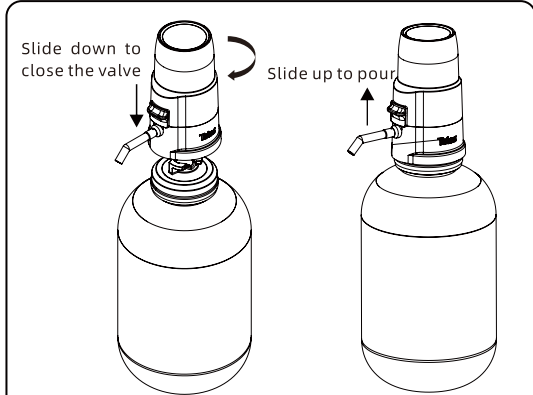
Installation instructions for keg upright version



1. Connect the beer tube to the connector, the nozzle should be downward.

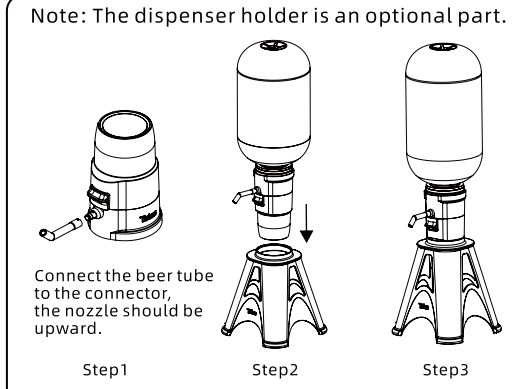


2. Remove the keg's dust-proof cap, disinfect the keg head with alcohol.



3. Slide down to close the valve
 4. Turn the dispenser clockwise to tighten the keg
 5. Slide up to open the valve for pouring
 Note: The inside of the dispenser is waterproof, it can be directly rinsed with water.

Installation instructions for keg upside down version



Note: The dispenser holder is an optional part.
 Connect the beer tube to the connector, the nozzle should be upward.
 Step1 Step2 Step3
 1. Steps 1-4 are the same as the keg upright version, the nozzle should be upward.
 2. Put the keg and the dispenser upside down on the holder.
 3. Slide down to open the valve for pouring
 Note: The inside of the dispenser is waterproof, it can be directly rinsed with water.

Charging

- When the top light is yellow, it means it needs to be charged.
- Red light means it is charging, green light means charging is completed
- Full charge time is about 3.5-5 hours.

Specifications

Model:	1119402
Input:	5V,1A
Material:	ABS
Net weight:	260g keg upside down version: 380g
Gross weight:	280g keg upside down version: 405g
Product size:	138*76*131mm keg upside down version: 177*160*242mm
Package size:	90*90*157mm keg upside down version: 180*175*175mm

display

