

TROUT FISHING TECHNIQUES CONT.

Lightweight graphite ice rods and spinning reels spooled with 2- to 4-pound test line allow anglers to use small ice flies tipped with wax worms effectively. Lightweight fishing line is important for ice fishing as the water is very clear in winter. Heavy lines scare fish and do

not let the small, size 10-14, ice flies work properly.



KEVIN ELBRECK PHOTOGRAPHY

BLACK HILLS FLY PATTERNS

Insect	Pattern	Size	Date Useful
Mayfly	Hare's Ear Nymph*	14-20	Year-round
	Pheasant Tail Nymph*	14-20	Year-round
	Blue-winged Olive	16-20	Year-round
	Adams	16-20	Year-round
Caddis	Little Black Caddis	16-20	April-July
	Elk Hair Caddis (olive or tan)	12-16	April-Sept.
Midge	Brassie	16-20	Year-round
	Griffith's Gnat	18-24	Year-round
Terrestrial	Grasshopper	8-14	May-Sept.
	Ant	16-20	May-Sept.
Stonefly	Hare's Ear Nymph	6-14	Year-round
	Bitch Creek	4-12	Year-round
Attractor	Wooly Buzzer	6-14	Year-round
	Royal Wulff	14-20	March-Oct.

*bead-head, weighted



Hare's Ear Nymph



Pheasant Tail Nymph



Pheasant Tail Nymph*



Adams



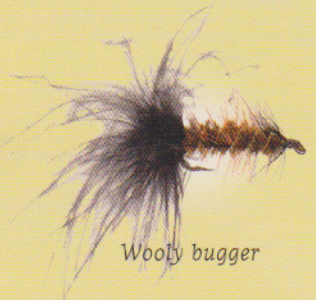
Elk Hair Caddis



Brassie



Grasshopper



Woolly bugger

AL CAMPBELL/KEVIN ELBRECK PHOTOGRAPHY