

METHODE
BRIGITTE
KETTNER

Brigitte Kettner

YOUR PERSONAL
COSMETIC-CONCEPT

PURE
BIOCELLULOSE
MASKS

MADE IN GERMANY

The thinnest mask in the world as the most effective active substance carrier.
Lays like a second skin optimally on facial contours
and in the folds and lines.

naturally pure **BIOCELLULOSE**

Nature is considered an example for the development of new materials or as a depot for numerous healing agents. Therefore, it is an obvious thing to combine natural materials and active ingredients, also in the field of cosmetics.

Anti-ageing BioCellulose mask for face or area of the eyes **MADE IN GERMANY**

BioCellulose as a carrier for active substances

BioCellulose is a pure natural product produced through the fermentation of glucose. The result is a coherent, stable network of millions of fine fibres that are 1,000 times thinner than a human hair. They are extremely hydrophobic and have an impressive water binding capacity with a storage capacity of up to 100 times their own weight. The tightly woven fibres are arranged in a three-dimensional structure. Despite its fine fibres, it is tear-resistant and, at the same time, elastically hygienic and biodegradable. These properties make them an ideal carrier for active ingredients in medicine and cosmetics.

The special material allows the mask to be pulled and moved, and thus accurately placed despite the moisture. The slightly gel-like mask lays itself perfectly in all recesses of the skin's relief and nestles there like a second skin. Due to optimal adaptation to the skin surface, the active substance molecules that are stored are specifically released for treatment and care of the skin, thus achieving very good cosmetic results.

- Very light and thin mask with high transparency
- Maximum effectiveness through perfect skin contact
- Very good adhesion to the skin and thus great freedom of movement during application
- Adaptable to any face size by applying two parts of a mask
- Adaptable to every eye contour
- Can be applied easily at home
- Ideal combinations of treatment in the cabin
- Active ingredients can be introduced with ultrasound/micro-current/light therapy

#dieSpracheDerHaut



ultimate line skin recharge
BIOCELL EYE MASK



© by - METHODE BRIGITTE KETTNER GmbH

#dieSprache der Haut



Hydrating and tightening 3D BioCellulose eye mask (pads)

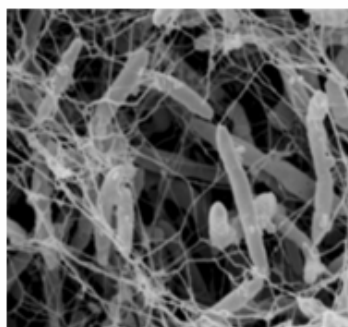
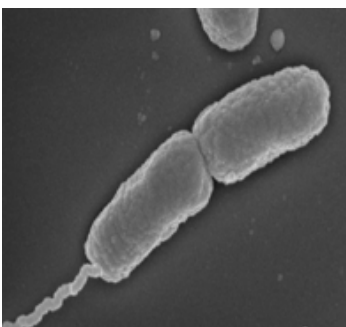
On your mark, get set, shine! With the skin recharge BioCellulose eye mask, which was specially developed for fatigued skin in the area of the eyes, admiring looks are assured.

INGREDIENTS: AQUA, PANTHENOL, PENTYLENE GLYCOL, GLYCERINE, SODIUM HYALURONATE, HYDROLYSED LUPINE PROTEIN, HYDROLYSED SODIUM HYALURONATE, HYDROXYACETOPHENONE, CITRIC ACID

This eye mask combines bio-cellulose technology with a unique active ingredient complex that provides the fatigued area around the eyes with intensive moisture and anti-ageing peptides. This biomimetic formula, carefully selected by Brigitte Kettner's method, specifically targets wrinkles, crow's feet and dryness-induced lines, minimising them in the area around the eyes. It helps to combat the sagging effect, improving resistance to „gravity's influence“.

This sustainably produced masking fabric clings to the contours of the eyes like a second skin, thereby optimally transferring the highly concentrated active ingredients to the skin. This easy-to-apply and cool BioCellulose eye mask gives you skin that radiates beauty that appears rejuvenated. The area around the eyes looks firmer, lines and wrinkles are filled in, and the skin appears taut.

The eye pads are ideal for a weekly exclusive care routine or just for now and then as needed (for example, as a freshness treatment on the go). When applied several times a week, the area around the eyes will appear more radiant and refreshed. Thanks to its ionised active ingredients, the BioCellulose eye mask is ideally suited for use with an ultrasonic or microcurrent device.

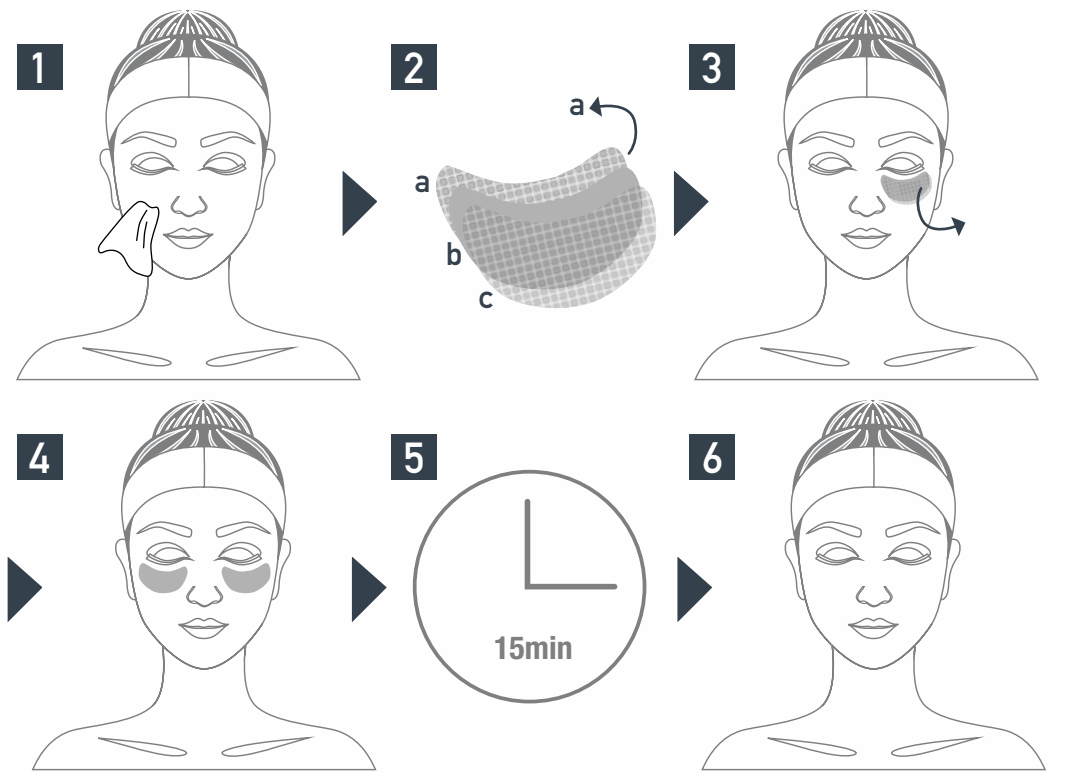


skin recharge biocell eye mask

APPLICATION:

TIP:
FOR A SPECIAL
DOSE OF FRESHNESS,
PLACE THE EYE PADS IN
THE REFRIGERATOR
BEFORE APPLYING.

1. Clean, tone and dry your face and the area around your eyes.
2. Carefully tear open the packaging and remove both pads. The BioCellulose Mask is embedded between two protective mesh layers (a, c). Peel off the first mesh layer (a), place this side under your eye, and press it on evenly.
3. Carefully remove the second mesh layer (c) starting from the side so that only the BioCellulose mask is left on the area. Smooth the mask until the material is almost invisibly applied to your skin.
4. Apply it the same way for the second eye area.
5. Leave them on for 15 minutes and then peel them off.
6. Gently massage remnants of the active substance complex into your skin and apply eye care cream.



effective ACTIVE SUBSTANCES

Skin type: normal, dry, mature skin

Lupine protein

(INCL: HYDROLYSED LUPINE PROTEIN)

Helps to counteract photoageing and chronoageing, supports and strengthens the skin structure (ANTI-SAGGING), counteracts UV-induced stress (skin that is stressed because of surroundings), improves elasticity and firmness of the skin (anti-ageing).

3-fold complex of hyaluronic acid

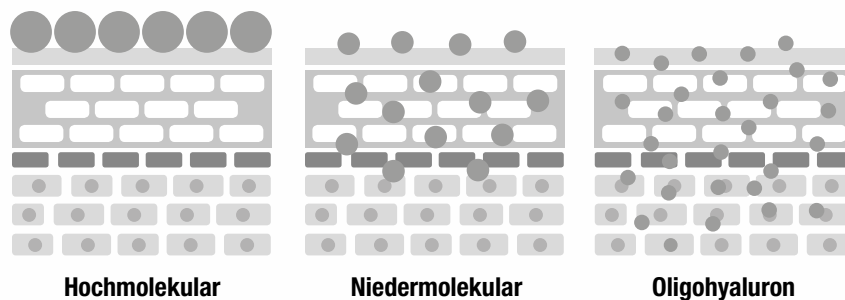
(INCI: SODIUM HYALURONATE, HYDROLYSED SODIUM HYALURONATE)

High-molecular weight hyaluronic acid:

Works only for a short time, binds the moisture in the stratum corneum (dehydrated and dry skin), prevents the „evaporation“ of the skin's own water, fixes moisture on the skin surface (thin film on the skin), which moisturises the skin and improves its elasticity, improves inflammatory processes on the skin surface (impurities, eczema).

Low molecular weight and very low molecular weight (mini-) hyaluronic acid:

works long term, is stored in the connective tissue of the skin, has a lasting anti-wrinkle effect (mature skin), tightens, smoothens and cushions the skin, visibly reduces wrinkle depth, stores moisture sustainably in the skin (dehydrated skin).



lift line
LIFTING BIOCELL MASK



© by - METHODE BRIGITTE KETTNER GmbH

#dieSprache der Haut



Anti-Ageing Boosting Bio-Cellulose Face Mask

Hydrating and strengthening 3D BioCellulose face mask and skin care cream with an immediate lifting effect! Gives your face radiance.

INGREDIENTS: AQUA, PANTHENOL, PENTYLENE GLYCOL, GLYCERIN, SACCHARIDE ISOMERATE, CALCIUM PCA, SODIUM HYALURONATE, HYDROLYSED SODIUM HYALURONATE, PALMITOYL TRIPEPTIDE-1, PALMITOYL TETRA PEPTIDE-7, BUTYLENE GLYCOL, HYDROXYACETOPHENONE, CARBOMER, COCO-GLUCOSIDE, LINOLENIC ACID, SODIUM LACTATE, CITRIC ACID, ISOPROPYL ALCOHOL, SODIUM CITRATE.

This face mask combines bio-cellulose technology with a unique active ingredient complex that provides the skin with intensive moisture and anti-ageing peptides. The biomimetic formula, carefully selected by Brigitte Kettner's method, specifically minimises the premature appearance of skin ageing such as UV damage, wrinkles and dryness-induced lines. It helps to combat the sagging effect, improving resistance to „gravity's influence“. The beauty miracle supports the body's own regeneration.

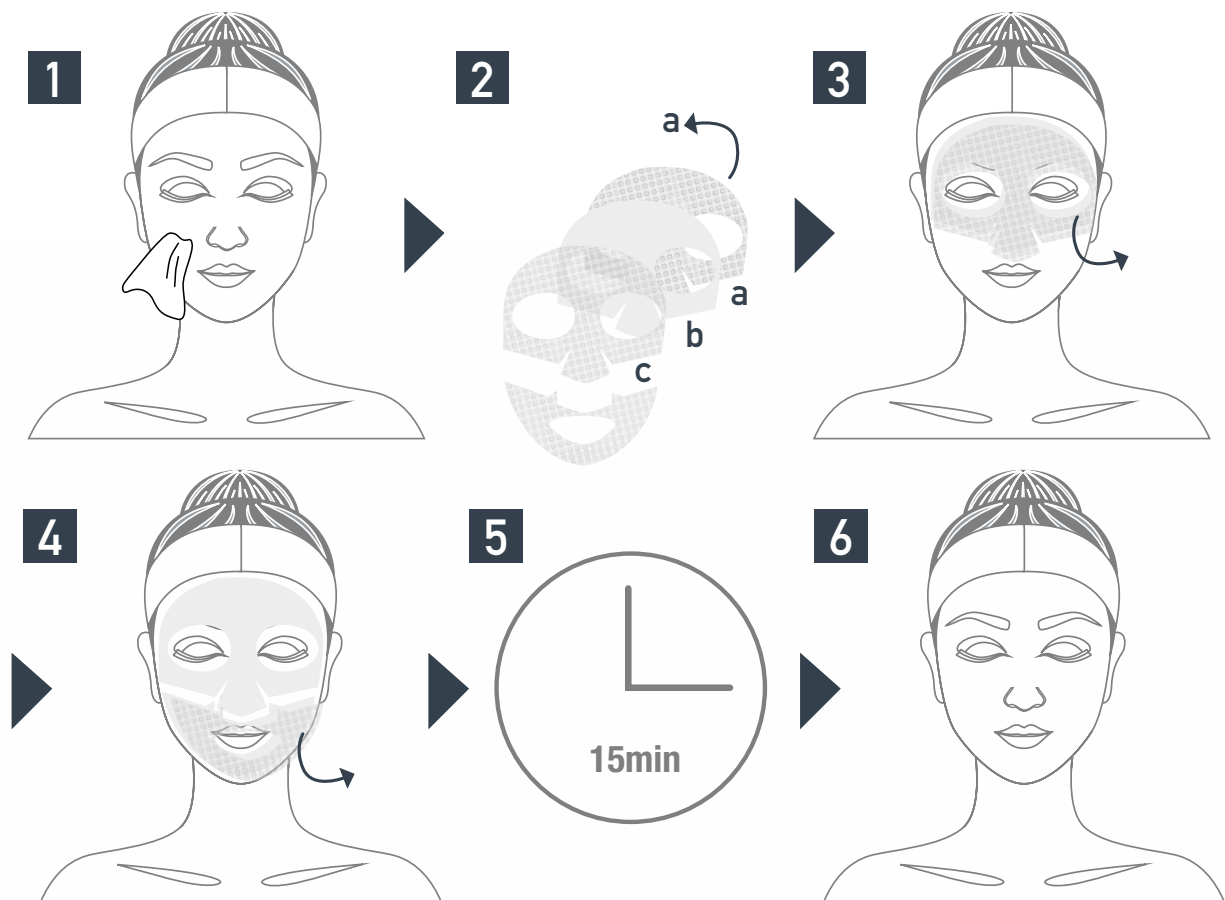
This sustainably produced masking fabric clings to the face like a second skin, thereby optimally transferring the highly concentrated active ingredients to the skin. This easy-to-apply face mask gives your face a radiant complexion and skin that appears rejuvenated. The facial contours appear tightened, lines and wrinkles are filled, and the skin appears taut.

#dieSpracheDerHaut



lifting biocell mask APPLICATION

The anti-ageing boosting cellulose face mask is ideal for a weekly exclusive care routine or just for now and then as needed (e.g. as a freshness treatment on the go). When applied several times a week, the skin will appear more radiant and refreshed. Thanks to its ionised active ingredients, the BioCellulose mask is ideally suited for use with an ultrasonic or microcurrent device.



practically 2-STEP-SYSTEM

STEP 1

Clean, tone and dry your face and the area around your eyes.

Carefully tear open the packaging, remove the mask parts and unfold them. The BioCellulose mask is placed in between two protective mesh layers. Start with the mask for the upper area of the face (forehead, eyes, and nose). Pull off the first layer of mesh, place this side on the upper area of the face and press it down evenly.

Carefully remove the second mesh layer starting from the side so that only the BioCellulose mask is left on the area. Smoothen the mask until the material is almost invisibly applied to your skin.

Repeat the application for the lower part of the face (mouth, chin and neck area).

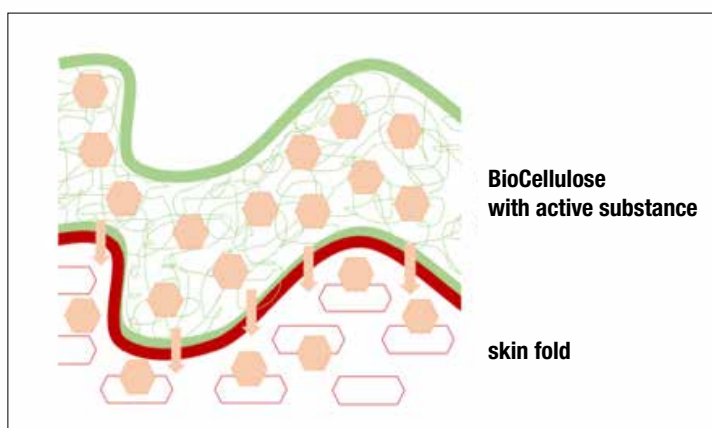
Allow the BioCellulose eye mask to work for 15 minutes and then remove it.

Gently massage remnants of the active substance complex into your skin.

STEP 2

1. Carefully open the packaging
2. Take out the matricare cream and apply to the entire face at the end.

Skin type: normal, dry, mature skin



#dieSprache der Haut



effective SUBSTANCES

Carbohydrate complex:

(INCI: SACCHARIDE ISOMERATE)

Excellent moisturising factor and carbohydrate magnet = transfers the property of water retention to the keratin (i.e. moisture is no longer washed out by detergents) and binds, among other things, moisture from the environment in the skin, promoting the moisture content of the skin (dehydrated and dry skin), strengthens the protective function of the skin, prevents scaling, improves the skin surface, reduces transepidermal water loss.

Calcium PCA:

(INCI: CALCIUM PCA)

Strengthens the cohesion of keratinocytes (skin cells); the skin becomes more resistant to environmental influences, protects against dehydration (dry skin, eye area), stimulates the growth of ceramides (important components of the cell membrane) in the epidermis, strengthens the skin barrier.

3-fold complex of hyaluronic acids

(INCI: SODIUM HYALURONATE)

High-molecular weight hyaluronic acid

Works only for a short time, binds the moisture in the stratum corneum (dehydrated and dry skin), prevents the „evaporation“ of the skin's own water, fixes moisture on the skin surface (thin film on the skin), which moisturises the skin and improves its elasticity, improves inflammatory processes on the skin surface (impurities, eczema).

Low molecular weight and very low molecular weight (mini-) hyaluronic acid:

works long-term, is stored in the connective tissue of the skin, has a lasting anti-wrinkle effect (mature skin), tightens, smoothes and cushions the skin, visibly reduces wrinkle depth, stores moisture sustainably in the skin (dehydrated skin).

Anti-ageing peptides / pentapeptides:

(INCI: PALMITOYL TRIPEPTIDE-1, PALMITOYL TETRAPEPTIDE-7)

Stimulating effect on collagen synthesis (collagen booster), promotes elastin synthesis, activates collagen and hyaluronic acid production in the skin, eliminates bumps and wrinkles from the inside, and reduces this visibly with a firming and smoothing effect (anti-ageing), anti-inflammatory properties (sensitive skin, eczema).

versatile

APPLICATION POSSIBILITIES

Luxury care for the home

The simple, time-saving application with intensive active ingredients ensures a feel-good experience with immediate effect. Precious as silk, this mask nestles gently against the contour of your skin.

Luxury experience in the cabin

manual treatment:

Apply acupressure directly on the BioCellulose mask or use the BioCellulose mask to complete the treatment.

Ideal combination with instrument-based treatment methods

The ultra-thin masks made of BioCellulose represent a unique basis for combining with different instrument-based treatment methods. In addition to optimally releasing active ingredients, the material of the masks allows for a perfect transfer of physical effects in order to positively influence the regeneration processes of the skin and to stimulate the metabolic processes. In comparison to „normal masks“, it can store more active ingredients and bring them to the skin.

skinflower ultrasonic & microcurrent

Not only the effects of sound and microcurrent are used, but also the infiltrated active ingredients of the BioCellulose mask.

After a device has been applied, e.g., microdermabrasion, radiofrequency the skin can absorb more active ingredients, and regenerates itself through the soothing effect of the BioCellulose mask.

#dieSpracheDerHaut



METHODE
BRIGITTE
KETTNER

Brigitte Kettner

**YOUR PERSONAL
COSMETIC-CONCEPT**