

**Features & Benefits:**

- > 10/100/1000 Mbps GbE Ports
- > Onboard Tools Manage Wired & Wireless Devices
- > SFP Slots Support Extended Connectivity via Fiber Uplinks, Redundancy & Failover
- > Network Troubleshooting, Monitoring, & Email Alerts
- > Centrally Manage Wired & Wireless Networks via ezMaster™
- > Configure, Manage & Monitor Up to 50 Neutron EWS APs Locally via Controller Mode
- > Security: Access Control List/Port Security; 802.1X & RADIUS Authentication
- > IGMP & MLD Snooping Provides Advanced Multicast Filtering & Network Efficiency
- > 802.3ad Link Aggregation (LACP) Supports Traffic Load Balancing
- > Voice VLAN for Fast, Reliable Deployment of VoIP Services
- > Advanced QoS with IPv4/IPv6 Ingress Traffic Filtering (ACLs) & Prioritization
- > Energy Efficient Ethernet (802.3az) Improves Energy Savings with Compliant Devices
- > Dual Firmware Images Improve Reliability & Network Uptime
- > Silent, Fanless Design (8/24 port) & Smart Fan Feature (48 port)

## Gigabit Managed Smart Switches

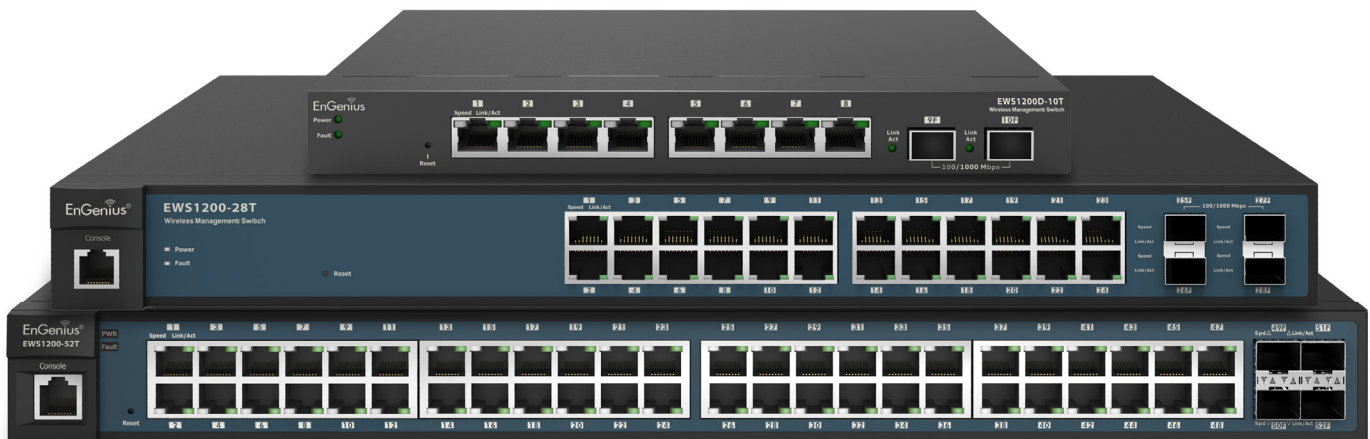
### Simplified Management & Optimal Network Performance for Small-to-Mid-Size Organizations

The EnGenius Gigabit Managed Smart Switches with WLAN Controller feature 8-, 24- or 48- Gigabit ports and support full feature Layer 2 manageability.

The Switches offer simplified network configuration, monitoring, and management options plus ezMaster™ Centralized Network Management Software, a robust, easy-to-use Web-based tool.

Enterprise-class features optimize network efficiency ensuring peak performance while reducing expenses for cost-conscious SMB organizations.

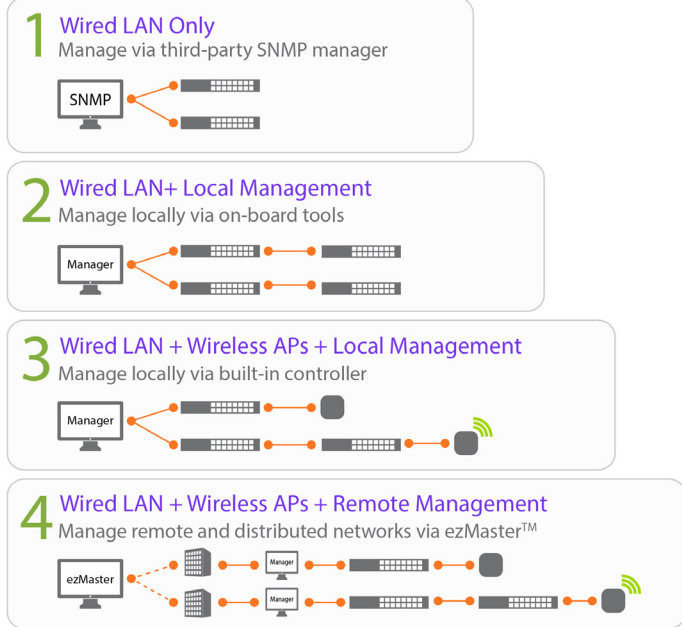
Whether installed in small or mid-size organizations such as medical offices, warehouses, or large homes, the Smart Switch's design and easy-to-use interface enables effortless and efficient deployment and operation. Organizations with limited IT support and budgets can create a reliable, efficiently managed network in no time.



## High Performance Gigabit & Management Flexibility

Each of the Switch's Gigabit Ethernet ports provide seamless, high-speed access for networked devices while reducing bottlenecks that can interrupt communications. The Switch offers deployment flexibility and four types of management options while efficiently supporting both wired and wireless networks.

### Types of Deployment = 4 Types of Management



## Easy Network Management, Visibility & Troubleshooting

Achieve network management, visibility, and troubleshooting locally through the Switch's on-board Web interface tools or remotely with ezMaster software. Its Network Topology view automatically maps the deployment, displaying device relationships across the infrastructure, and is useful for troubleshooting issues without manual tracking.

## Wireless Device Management

Quickly discover, configure, and monitor Neutron EWS Access Points and manage up to 50 devices within the local subnet through the Switch's built-in wireless network controller features.

## Centrally Manage the Wired & Wireless Network

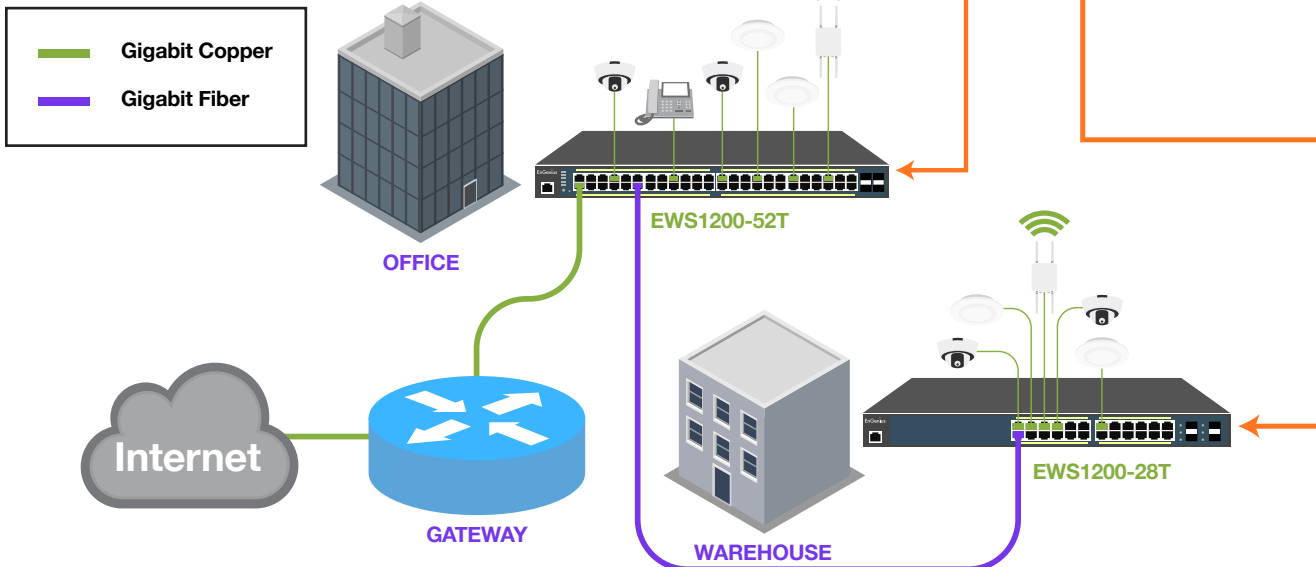
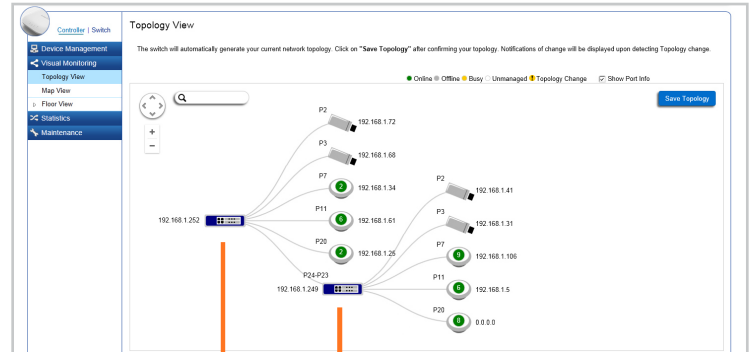
Remotely manage Neutron EWS Access Points, Switches, and IP Cameras through ezMaster Network Management Software. Centrally manage hundreds of EWS devices across the network regardless of its size or location with no licensing or subscription fees.

## VLAN/Voice & Quality of Service

Segment the network by departments or traffic types for increased performance and security with 802.1Q VLAN. Prioritize compliant VoIP and video traffic using 802.1p Class of Service (CoS) ensuring high bandwidth, time-sensitive data is forwarded immediately for clear, smooth voice and video delivery.

## Network Security

Establish a Guest VLAN to limit Internet resources for visitors while securing the network from sophisticated Trojans and malware that can use guest's mobile devices to attack the network.



## Managed Smart Switches



Models	EWS1200-52T	EWS1200-28T	EWS1200D-10T
10/100/1000 Base-T Ports	48	24	8
100/1000 SFP Ports	4	4	2
Console Port	1 RJ45	1 RJ45	-
Rackmount	19" 1U	19" 1U	9.44" (desktop)
Switching Capacity	104 Gbps	56 Gbps	20 Gbps
Forwarding Mode	Store-and-forward	Store-and-forward	Store-and-forward
MAC Address Table	8k	8k	8k
Packet Buffer Memory	1.5 MB	512 KB	512 KB
Power Source	60W Internal Power	30W Internal Power	DC12V/1A External
Full Load Power Consumption	54.02W	24.48W	6.9W
Management	ezMaster Network Management Software, Web GUI, CLI, SNMP, RMON, HTTPS, Dual Image		
Wireless Controller Supports EWS APs	Up to 50	Up to 50	Up to 50
Advanced QoS with IPv4/IPv6 Multicast Filtering	IGMP and MLD Snooping		
Auto-VoIP	•	•	•
VLANs	Max 4094 Static Groups, Voice VLAN		
Network Standards	IEEE 802.3 Ethernet IEEE 802.3i 10Base-T Ethernet IEEE 802.3u 100Base-TX Fast Ethernet IEEE 802.3ab 1000Base-T Gigabit Ethernet IEEE 802.3x Full-Duplex Flow Control IEEE 802.3z Gigabit Ethernet 1000Base-SX/LX IEEE 802.3ad Link Aggregation (Trunking) IEEE 802.1D Spanning Tree Protocol (STP) IEEE 802.1w Rapid Spanning Tree Protocol (RSTP) IEEE 802.1s Multiple Spanning Tree Protocol (MSTP) IEEE 802.1Q VLAN Tagging IEEE 802.1ab Link Layer Discovery Protocol (LLDP) IEEE 802.1p Quality of Service IEEE 802.1X RADIUS Access Control IEEE 802.3az Energy Efficient Ethernet		

Model	Description
<b>EWS1200-52T</b>	48-Port Gigabit Layer 2 Managed Smart Switch w/ WLAN Controller - Manage up to 50 Access Points
<b>EWS1200-28T</b>	24-Port Gigabit Layer 2 Managed Smart Switch w/ WLAN Controller - Manage up to 50 Access Points
<b>EWS1200D-10T</b>	8-Port Gigabit Layer 2 Managed Smart Switch w/ WLAN Controller - Manage up to 50 Access Points

# ezMaster™

## Network Management Software

### Flexible Distributed Network Management

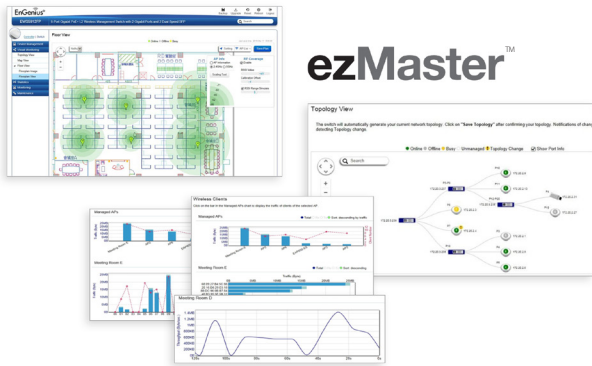
EzMaster Network Management Software expands the flexibility and scalability of Neutron Series Managed Access Points and Switches.

EzMaster allows organizations, such as branch offices and managed service providers to easily and affordably deploy, monitor, and manage a large number of Neutron EWS APs, and Switches across geographically diverse properties. Centrally manage an unlimited number of independent distributed networks in the same subnet or cross-subnet from a single, at-a-glance network dashboard, no matter where they're located.

Deploy ezMaster locally, remotely or via a Cloud-based service with or without an onsite WLAN controller.

### Powerful, Scalable Options

EzMaster scales with your growing business needs. Manage 1,000+ Neutron EWS Access Points and Switches and 10,000+ concurrent users. Together, Neutron EWS APs, Switches and ezMaster provide a flexible, fully integrated solution with redundancy support and future expandability for broader device connectivity.



### System Requirements

#### Recommended environment for managing up to 500 APs

**CPU:** Intel® Core™ i3 3.6 GHz dual-core or above  
**RAM:** 4 GB minimum  
**HDD:** 500 GB (actual requirement dependent on log size)  
**OS:** Microsoft® Windows® 7 or later + VMware® Player 7.0 or compatible virtualization software

#### Recommended environment for managing up to 1,000+ APs

**CPU:** Intel® Core™ i5 3.2 GHz quad-core or above  
**RAM:** 4 GB minimum  
**HDD:** 500 GB (actual requirement dependent on log size)  
**OS:** Microsoft® Windows® 7 or later + VMware® Player 7.0 or compatible virtualization software

#### Browser Requirements

Internet Explorer 10 or better  
 Firefox 34.0 or better  
 Chrome 31.0 or better  
 Safari 8.0 or better

#### Network Topology Requirements

At sites where APs are deployed: A DHCP-enabled network for APs to obtain an IP address

### Simplified Device Management

EzMaster Network Management Software makes device management easy. How? Through centralized bulk configuration, provisioning and monitoring, a comprehensive at-a-glance network dashboard, rich analytics and reporting, and much more.

### ezMaster Software Features

- > **Centralized Management**
  - Configure, Managed & Monitor 1,000+ Neutron Devices
  - Cross-Network AP Management
  - AP Group Configuration
- > **Access Point Configuration & Management**
  - Auto Channel Selection
  - Auto Tx Power
  - Background Scanning
  - Band Steering (Auto Band Steering & Band Balancing)
  - Client Isolation
  - Client Limiting
  - Fast Roaming
  - L2 Isolation
  - LED On/Off Control
  - Multiple SSID
  - RSSI Threshold
  - Secure Guest Network
  - Traffic Shaping
  - VLAN Isolation
  - VLAN Tag
- > **Comprehensive Monitoring**
  - Device Status Monitoring
  - Floor Plan View
  - Map View
  - Rogue AP Detection
  - System Status Monitoring
  - Visual Topology View
  - Wireless Client Monitoring
  - Wireless Coverage View
  - Wireless Traffic & Usage Statistics
- > **Management & Maintenance**
  - Bulk Firmware Upgrade
  - Captive Portal
  - Email Alert
  - ezRedundancy (Available 2016)
  - Kick/Ban Clients
  - One-Click Update
  - Remote Logging
  - Seamless Migration
  - SmartSync Redundancy (Available 2016)
  - Syslog

## Technical Specifications

<b>Network Ports</b>	<b>Power Source</b> continued	<b>QoS</b> continued
<b>EWS1200D-10T</b>	<b>EWS1200-28T</b>	Bandwidth Control
8x 10/100/1000 Mbps Ports	Full Load Power Consumption: 24.48W	- Port-Based (Ingress/Egress, 64 Kbps~1000 Mbps)
2x 100/1000 Mbps SFP Ports	30W Internal Power	Broadcast/Unknown Multicast/Unknown Unicast Storm Control
<b>EWS1200-28T</b>	<b>EWS1200-52T</b>	
24x 10/100/1000 Mbps Ports	Full Load Power Consumption: 54.02W	
4x 100/1000 Mbps SFP Ports	60W Internal Power	
1x RJ45 Console Port		
<b>EWS1200-52T</b>	<b>Software Features</b>	<b>Access Control List (ACL)</b>
48x 10/100/1000 Mbps Ports	<b>Layer 2 Features</b>	Layer 2/3
4x 100/1000 Mbps SFP Ports	802.3ad Link Aggregation	- Supports Maximum 32 Entries (ACL)
1x RJ45 Console Port	- Maximum of 8 Groups/8 Ports per Group	- Supports Maximum 256 Entries (ACE)
	Port Mirroring	ACL Based on:
	- One-to-One	- MAC Address
	- Many-to-One	- VLAN ID
	Spanning Tree Protocol	- 802.1p Priority
	- 802.1D Spanning Tree Protocol (STP)	- Ethertype
	- 802.1w Rapid Spanning Tree Protocol (RSTP)	- IP Address
	- 802.1s Multiple Spanning Tree Protocol (MSTP)	- Protocol Type
	MAC Address Table	- DSCP
	- 8K Entries	<b>Security</b>
	Static MAC Address	802.1X
	- 256 Entries	- Guest VLAN
	802.1ab Link Layer Discovery Protocol	- Port-Based Access Control
	IGMP Snooping	Supports RADIUS Authentication
	- IGMP v1/v2/v3 Snooping	Port Security
	- Supports 4094 IGMP Groups	- Up to 256 MAC Addresses per Port
	- IGMP per VLAN	Port Isolation
	- IGMP Snooping Querier	DoS Attack Prevention
	- IGMP Snooping Fast Leave	BPDU Attack Prevention
	MLD Snooping	
	- MDL Snooping v1/v2	<b>Monitoring</b>
	- Supports 4,094 MLD Groups	Port Statistics
	- MLD per VLAN	System Log
	Jumbo Frame	RMON
	- Up to 9,216 bytes	
	802.3x Flow Control	<b>Management</b>
	802.3az Energy Efficient Ethernet	Web Graphical User Interface (GUI)
		Command Line Interface (CLI)
		BootP/DHCP Client/DHCPv6 Client
		SSH Server
		Telnet Server
		TFTP Client
		HTTPS
		SNMP
		- Supports v1/v2c/v3
		SNMP Trap
		SNTP
		Configuration Restore/Backup
		Dual Images
		Email Alerts
	<b>VLAN</b>	<b>Diagnostic</b>
	802.1Q Support	Cable Diagnostic
	VLAN Group	Ping Test
	- Max 4,094 Static VLAN Groups	Trace Route
	Voice VLAN	
	<b>QoS</b>	
	802.1p Quality of Service	
	- 8 Queues per Port	
	Queue Handling	
	- Strict	
	- Weighted Round Robin (WRR)	
	QoS Based on:	
	- 802.1p Priority	
	- DSCP	
<b>Performance</b>		
<b>EWS1200D-10T</b>		
Switching Capacity: 20 Gbps		
<b>EWS1200-28T</b>		
Switching Capacity: 56 Gbps		
<b>EWS1200-52T</b>		
Switching Capacity: 104 Gbps		
Forwarding Mode: Store-and-Forward		
SDRAM: 256 MB		
Flash Memory: 32 MB		
<b>EWS1200D-10T / EWS1200-28T</b>		
Packet Buffer Memory: 512 KB		
<b>EWS1200-52T</b>		
Packet Buffer Memory: 1.5 MB		
Address Database Size: 8,000 MAC Addresses		
<b>Physical Interface</b>		
LED Indicators		
Reset Button		
<b>EWS1200D-10T</b>		
Desktop/Wall Mount		
<b>EWS1200-28T / EWS1200-52T</b>		
Rack Mount		
<b>LED Indicators</b>		
<b>Device:</b>		
Power LED		
Fault LED		
<b>Ports:</b>		
Link/Activity/Speed (per Ethernet port)		
Link/Activity/Speed (per SFP slot)		
<b>Power Source</b>		
<b>EWS1200D-10T</b>		
Full Load Power Consumption: 6.59W		
DC12V/1A		

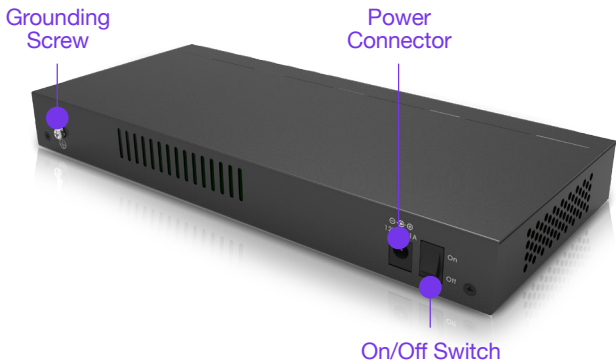
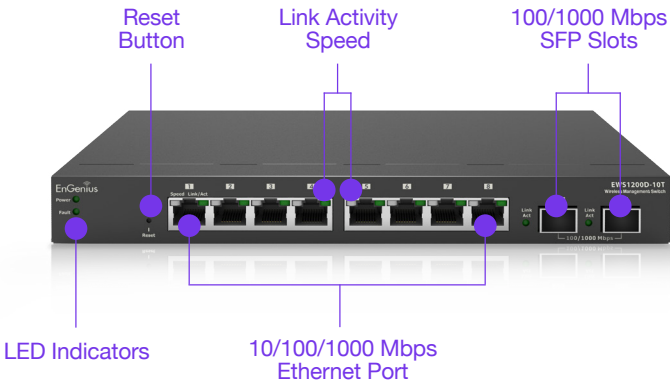
Technical Specifications continued

<b>MIB/RFC Standards</b>
RFC1213
RFC1493
RFC1757
RFC2674
RFC 2863
<b>Wireless Management Features</b>
AP Supported (up to 50 APs in controller mode)
Access Point Auto Discovery & Provisioning
Access Point Auto IP-Assignment
Access Point Group Management
Remote Access Point Rebooting
Access Point Device Name Editing
Access Point Radio Settings
Band Steering
Traffic Shaping
Fast Handover
Fast Roaming
Access Point Client Limiting
Client Fingerprinting
Wireless Security (WEP, WPA/WPA2 Enterprise, WPA/WPA2 PSK)
AP VLAN Management
VLANs for Access Point- Multiple SSIDs
Secured Guest Network
Capture Portal
Access Point Status Monitoring
Rogue AP Detection
Email Alert
Wireless Client Monitoring
Background Scanning
Wireless Traffic & Usage Statistics
Real-Time Throughput Monitoring
Visual Topology View
Floor Plan View
Wireless Coverage Display
Map View
Secure Control Messaging

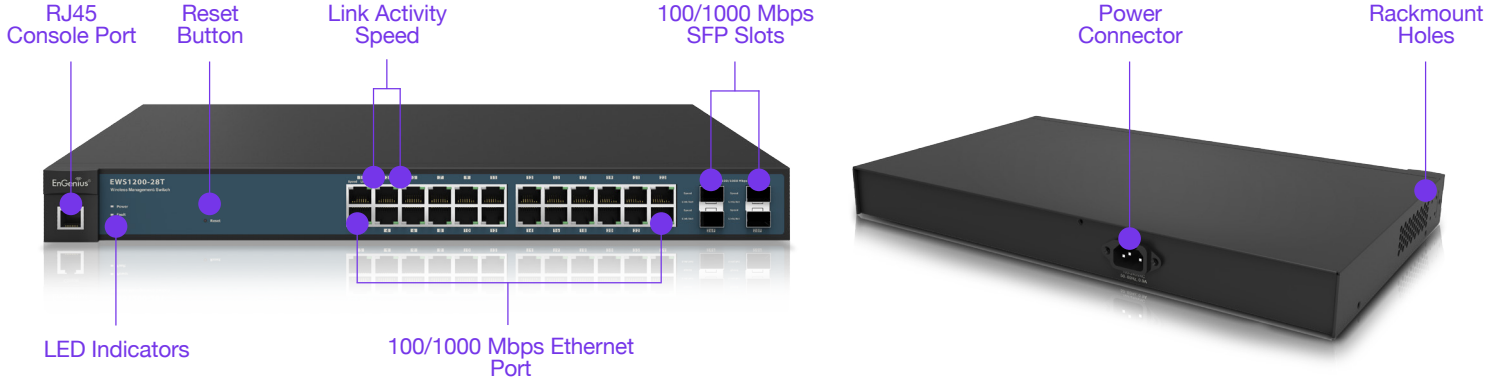
<b>Wireless Management Features</b> continued
SSL Certificate
Local MAC Address Database
Remote MAC Address Database (RADIUS)
Unified Configuration Import / Export
Intelligent Diagnostics
Bulk Firmware Upgrade Capability
One-Click Update
Kick/Ban Clients
<b>Environmental &amp; Mechanical</b>
<b>Temperature Range</b>
<b>EWS1200D-10T</b>
Operating: 32 to 104°F/0 to 40°C
<b>EWS1200-28T / EWS1200-52T</b>
Operating: 32 to 122°F/0 to 50°C
Storage: -40 to 158°F/-40 to 70 °C
<b>Humidity</b> (Non-condensing)
5% - 95%
<b>Dimensions &amp; Weights</b>
<b>Device</b>
<b>EWS1200D-10T</b>
Weight: 1.33 lbs. (.61 kg)
Width: 9.44" (240 mm)
Depth: 4.13" (105 mm)
Height: 1.06" (27 mm)
<b>EWS1200-28T</b>
Weight: 6.6 lbs. (3 kg)
Width: 17.32" (440 mm)
Depth: 10.23" (260 mm)
Height: 1.73" (44 mm)
<b>EWS1200-52T</b>
Weight: 8 lbs. (3.68 kg)
Width: 17.32" (440 mm)
Depth: 10.23" (260 mm)
Height: 1.73" (44 mm)

<b>Package Contents</b>
(1) EWS1200 Series GigE Managed Smart Switch
(1) Quick Installation Guide
<b>EWS1200D-10T</b>
(1) Power Adapter
(1) Wall-Mount Kit
<b>EWS1200-28T</b>
(1) Power Cord
(1) Rack Mount Kit
<b>EWS1200-52T</b>
(1) Power Cord
(1) Rack Mount Kit
<b>Warranty</b>
1 Year
<b>Certifications</b>
CE, FCC

EWS1200D-10T



**EWS1200-28T**



**EWS1200-52T**

