

AP MeshCam™

Surveillance Built on Mesh Wi-Fi

Neutron AP MeshCam combines ultra-fast mesh Wi-Fi and clear surveillance in a simple, space-saving design that eliminates dead zones and unsecured areas offering widespread visibility through optimized connectivity. It features smart-sensing mesh for simple setup, motion and audio-detection with email alerts, and centralized management through a Neutron Switch or ezMaster™.

Cover Every Corner With Always-There Wi-Fi & Security

Add multiple AP MeshCams to create always-there Wi-Fi and security that eliminates dead zones, even in the farthest corners, while keeping your eye on what matters most. One simplified solution forges powerful wireless mesh with crystal clear video for quick, expandable access and visibility regardless of interior size.

AP MeshCam is ideal for large homes, commercial offices, schools and anywhere both Wi-Fi and surveillance are needed. Utilize Mesh networking to expand these resources into entryways, hallways, stairwells, and lobbies and in retrofit applications where long wire runs would be difficult or costly.

Features & Benefits:

- 2-in-1: Mesh 11ac Wireless AP & IP Surveillance Camera
- Eliminate Wi-Fi Dead Zones & Get Widespread Visibility
- Fast 11ac Speeds to 867 Mbps for Smooth, Buffer-Free Connections
- View & Record Suspicious Activity With Night Visibility to 65 ft.
- Wide, 120° 2-MP Lens Captures HD Images Over a Broader Field
- Mesh Smart-Sensing Simplifies Installation & Optimizes Connectivity
- 802.3at/af-Compliant PoE Supports Flexible Device Placement
- One Device, One Install, One Wire Run Reduces Time & Material Costs
- Operate as a Stand-Alone or Expand to Centrally Manage
- Includes 16-Channel VM Software With Live Monitoring
- Eliminate the Need for Cloud Storage With Onboard SD Card Storage
- Secure Your Network While Providing Guest Access



Monitor Interiors for Whole-Space Assurance

See suspicious activity clearly in low light or total darkness up to 65 feet from the camera. Easily make out image details like facial features over a broader area with the AP MeshCam's 2-MP 1920 x 1080p HD sensor and 120-degree wide-angle lens. Set motion or audio-triggered recordings and get alerted at the first hint of trouble.



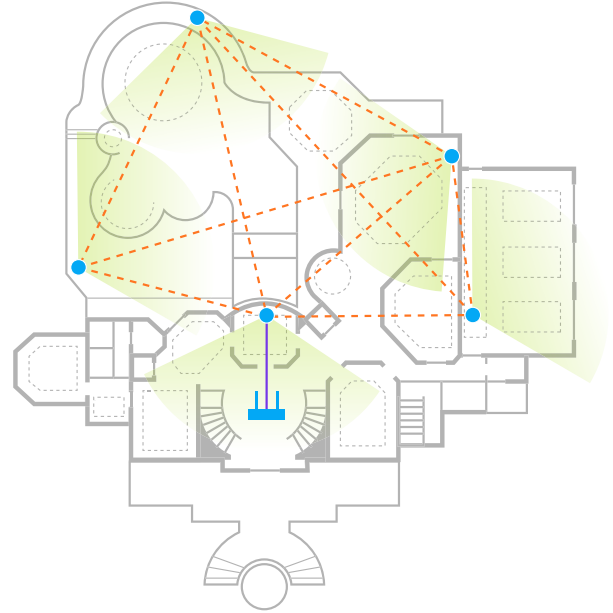
High Speed 11ac Eliminates Wi-Fi Buffering

Get smoking-fast 11ac Wi-Fi and enjoy smooth, buffer-free 4K Ultra HD streaming and rapid file loading. AP MeshCam's high-speed, dual-band performance reaches speeds to 867 Mbps on 5 GHz and rates to 300 Mbps on the 2.4 GHz frequency band, ensuring ample capacity for all your digital needs.



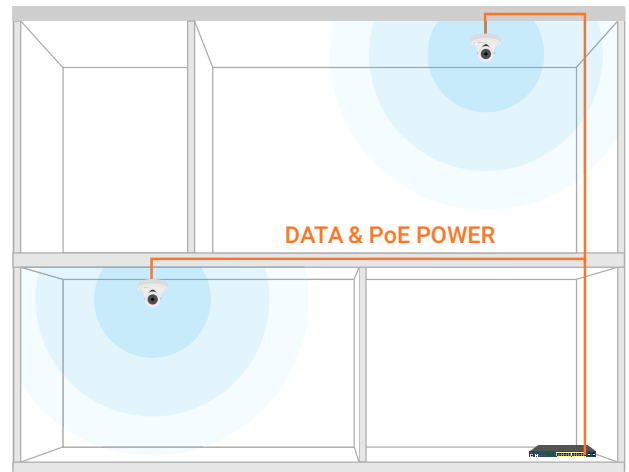
Wireless Mesh Simplifies Installation & Optimizes Connectivity

Mesh's smart-sensing technology adds devices quickly, optimizing routes between APs and immediately self-heals should it ever lose connection. Powerful range means better connection speed and fewer devices needed for reliable wall-to-wall coverage.



PoE Reduces Wiring Challenges, Installation Time and Costs

Reduce wiring challenges and installation time and costs with a single cable run for power and a single device install. Power each unit via one Ethernet cable with 802.3at/af Power-over-Ethernet (PoE) up to 325 feet from the power source or with a DC power input and utilize the mesh network to provide seamless Wi-Fi and IP camera connectivity.

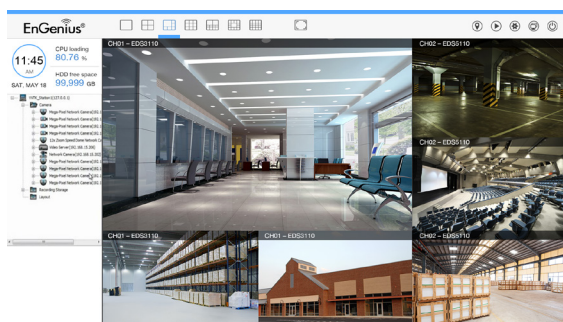


Video Management Software (VMS)

Easily Monitor & Manage the Camera Network

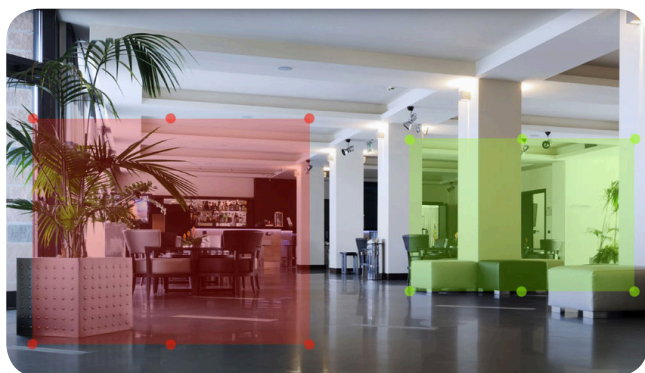
View, record and monitor live video from up to 16 cameras with the included, easy-to-use video management software. Streamline camera setup and configuration with the VMS' Discovery Tool. Import building floor plans to create a camera location map through eMap and easily monitor the entire camera network locally or remotely. Additional features:

- Optional Split-Screen Camera Views
- Monitor Up to 16 Cameras Simultaneously
- Live Monitoring, Record Video & Playback Options
- Quickly Search Archived Video via the Time Bar
- Establish Motion & Audio Trigger Recordings & Alerts
- Schedule Recordings



Zone Coverage

Set precise zone coverage within designated areas to record activity or detect motion near entryways or around windows within the camera's field of view. Customize sensitivity in each zone for greater control and set motion and audio-triggered alerts for instant email notification of events-in-progress.



Network Management

Operate Alone or Manage

The AP MeshCam supports stand-alone AP and the flexibility to deploy it as an indoor client bridge as needed.

Manage Up to 50 AP MeshCams With Neutron Switches

Neutron EWS Switches can manage the AP MeshCam and other Neutron APs. Through the switch, administrators have access to all connected Neutron devices and a full array of wireless and Layer 2 management tools. Choose between PoE+ and non-PoE switch models with flexible deployment and management options without requiring AP license or subscription fees.



ezMaster™ Centralized Network Management Software

ezMaster software offers unlimited scalability. Centrally manage hundreds of EWS AP MeshCams, APs and switches in multiple locations via ezMaster locally, remotely or via a Cloud-based service. EnGenius ezMaster provides enterprise-class features and a comprehensive at-a-glance dashboard with rich reporting and analytics and no licensing or subscription fees.



Simplified Deployment & Provisioning

In combination with Neutron Switches and ezMaster, the AP MeshCam is automatically discovered and provisioned. One-click individual or bulk configurations and upgrades also save time.

Technical Specifications

<p>Standards</p> <p>IEEE 802.11b/g/n on 2.4 GHz</p> <p>IEEE 802.11a/n/ac on 5 GHz</p> <p>IEEE 802.3at/af</p> <p>IEEE 802.11r</p> <p>IEEE 802.11k</p> <p>IEEE 802.11i</p> <p>IEEE 802.11x</p>	<p>Day/Night</p> <p>Removable IR-Cut Filter</p>	<p>Operation Modes</p> <p>Mesh: Mesh Access Point/Mesh Point</p> <p>Standalone: Access Point, Client Bridge, WDS Access Point, WDS Bridge, WDS Station</p>
<p>Antenna</p> <p>5dBi 5 GHz & 5dBi 2.4 GHz Internal High-Gain Antennas</p>	<p>Minimum Illumination</p> <p>Color (IR-Off): 0.01 Lux / F2.0</p> <p>B/W (IR-On): 0 Lux / F2.0</p>	<p>Transmit Power</p> <p>Up to 15 dBm on 2.4 GHz</p> <p>Up to 15 dBm on 5 GHz</p> <p>Max transmit power is limited by regulatory power</p>
<p>Physical Interface</p> <p>1 x 100/1000 Gigabit Ethernet Port</p> <p>- Supports 802.3at/af PoE Input</p> <p>1 x Reset Button</p> <p>1 x Power Connector</p> <p>1 x Micro SD/SDXC Slot</p> <p>24 Pcs IR LEDs</p> <p>1x Embedded Microphone</p>	<p>Shutter Time</p> <p>1/2 sec. to 1/10,000 sec.</p>	<p>Radio Chains/Spatial Streams</p> <p>2x2:2</p>
<p>LED Indicators</p> <p>1 x Power</p> <p>1 x 2.4 GHz</p> <p>1 x 5 GHz</p> <p>1 x Ethernet</p> <p>1 x Mesh</p>	<p>Video</p> <p>Compression</p> <p>H.264/MJPEG</p>	<p>Supported Data Rates (Mbps)</p> <p>2.4 GHz: Max 300</p> <p>5 GHz: Max 867</p> <p>802.11b: 1, 2, 5.5, 11</p> <p>802.11a/g: 6, 9, 12, 18, 24, 36, 48, 54</p> <p>802.11n: 6.5 to 300 (MCS0 to MCS15)</p> <p>802.11ac: 6.5 to 867 (MCS0 to MCS9, NSS=1~2)</p>
<p>Power Source</p> <p>24V Proprietary Compliant Source</p> <p>12VDC/1.5A</p> <p>Active Ethernet (PoE)</p>	<p>Stream</p> <p>2x Video Streams</p>	<p>Supported Radio Technology</p> <p>802.11b: Direct-Sequence Spread-Spectrum (DSSS)</p> <p>802.11a/g/n/ac: Orthogonal Frequency-Division Multiplexing (OFDM)</p>
<p>Power Consumption</p> <p>Maximum 12.4W</p>	<p>Frame Rates</p> <p>Up to 30 FPS at 1920 x 1080P</p>	<p>Channelization</p> <p>802.11ac with 20/40/80 MHz channel width</p> <p>802.11n with 20/40 MHz channel width</p> <p>802.11a/b/g with 20 MHz channel width</p>
<p>Memory Capacity</p> <p>Micro SD/SDXC – up to 64G</p>	<p>Image Settings</p> <p>Adjustable Image Size, Quality & Bit Rate (Constant Bit Rate/Variable Bit Rate)</p>	<p>Supported Modulation</p> <p>802.11b: BPSK, QPSK, CCK</p> <p>802.a/g/n: BPSK, QPSK, 16-QAM, 64-QAM</p> <p>802.11ac: BPSK, QPSK, 16-QAM, 64-QAM, 256-QAM</p>
<p>Camera</p> <p>Image Sensor</p> <p>Sony 1 /2.9" 2-Megapixel Progressive Scan CMOS</p>	<p>Configurable</p> <p>Brightness</p> <p>Sharpness</p> <p>Contrast</p> <p>Saturation</p> <p>Exposure</p> <p>Flicker Control</p> <p>Flip & Mirror</p> <p>Compression</p> <p>Time Stamp & Text Caption Overlay</p> <p>Auto/Manual Day & Night Mode</p> <p>3D Noise Reduction</p> <p>Low Light Compensation (LLC)</p> <p>EV Compensation</p> <p>Wide Dynamic Range</p> <p>Privacy Mask</p>	<p>Management</p> <p>Multiple BSSID</p> <p>Supports up to 16 SSIDs, 8 SSIDs per Radio</p>
<p>Lens</p> <p>Fixed Board Lens</p> <p>Fixed-Focus, f=2.8 mm / F2.0</p>	<p>Audio</p> <p>Audio Streaming</p> <p>1-Way</p>	<p>VLAN Tagging</p> <p>Supports 802.1q SSID-to-VLAN Tagging</p> <p>VLAN Pass-Through</p>
<p>F.O.V.</p> <p>120° (diagonal)</p>	<p>Interface</p> <p>Built-In Microphone</p>	<p>Spanning Tree</p> <p>Supports 802.1d Spanning Tree Protocol</p>
<p>IR Illuminator</p> <p>24 Pcs LEDs, Up to 65 Feet</p>	<p>Encoding</p> <p>AAC/G711A/G711U</p>	<p>QoS</p> <p>Compliant with IEEE 802.11e Standard</p> <p>WMM</p>
	<p>Networking</p> <p>Wireless & Radio Specifications</p> <p>Dual-Concurrent Radio</p>	<p>SNMP</p> <p>v1, v2c, v3</p>

Technical Specifications continued

MIB		
I/II, Private MIB		
Management Features		
Deployment Options		
Stand-Alone (Individually Managed)		
Managed Mode (with Neutron Series Switch/ezMaster)		
Stand-Alone Management Features		
Auto-Channel Selection		
Wireless STA (Client) Connection List		
Guest Network		
Fast Roaming (802.11k & 802.11r)		
Pre-Authentication (802.11i, 802.11x)		
PMK Caching (802.11i)		
RSSI Threshold		
Band Steering		
Traffic Shaping		
VLANs for Access Point – Multiple SSIDs		
Backup/Restore Settings		
Auto Reboot		
E-Mail Alert		
Wireless Management Features (with ezMaster & Neutron Switch)		
AP Auto Discovery and Provisioning		
AP Auto IP Assignment		
AP Group Management		
Auto AP Rebooting		
AP Device Name Editing		
AP Radio Settings		
Band Steering		
Traffic Shaping		
Fast Roaming (802.11k & 802.11r)		
Pre-Authentication (802.11i, 802.11x)		
PMK Caching (802.11i)		
RSSI Threshold		
AP Client Limiting		
Client Fingerprinting		
AP VLAN Management		
VLANs for AP - Multiple SSIDs		
Secured Guest Network		
Captive Portal		
Access Point Status Monitoring		
Rogue AP Detection		
Wireless Client Monitoring		
Background Scanning		
Auto Transmit Power		
Auto Channel		
Email Alert		
Wireless Traffic & Usage Statistics		
Real-time Throughput Monitoring		
Visual Topology View		
Wireless Management Features (with ezMaster & Neutron Switch) continued		
Floor Plan View		
Map View		
Wireless Coverage Display		
Secure Control Messaging (SSL Certificate)		
Local MAC Address Database		
Remote MAC Address Database (RADIUS)		
Unified Configuration Import/Export		
Bulk Firmware Upgrade Capability		
One-Click Update		
Intelligent Diagnostics		
Kick/Ban Clients		
Wi-Fi Scheduler		
Traffic Shaping		
Management Features		
Web Interface (HTTP)		
CLI (Telnet)		
Control Features		
Managed Mode (by Neutron Switch/ezMaster)		
Band Steering		
Auto-Reboot		
One-Click Firmware Upgrade		
Firmware Upgrade: Web Interface or CLI (FTP/HTTP)		
Security		
WEP Encryption (64/128/152 bit)		
WPA/WPA2 Enterprise (PSK using TKIP or AES)		
Hide SSID in Beacons		
MAC Address Filtering, Up to 50 MACs per SSID		
SSH Support		
Client Isolation		
Supporting Protocol		
IPv4, TCP, UDP, DHCP, NTP, DNS, DDNS, SMTP, FTP, HTTP, UPnP, NFS/Samba Client, QoS/DSCP, RTP, RTSP, 3GPP, PPPoE, Time Zone Management		
ONVIF Compatible (Profile S)		
Alarm & Event/Recording		
Event Trigger		
Motion/Tamper/Audio Detection		
Event Notification		
Email/Push Notifications		
Event Actions		
File Upload to NFS/SAMBA/FTP/SMTP/Local SD Card/EnGenius Cloud & Play Audio		
EnGenius Simple Smart Recording (Only for EnGenius Cloud Series Routers/Gateways)		
Video Buffer		
5-Seconds Pre-Alarm & Post-Alarm		
Video Playback		
PC/VMS		
Schedule Recording		
System Requirements		
Viewing		
Operating System		
Microsoft® Windows® 7 & 10		
Web Browser		
IE, Safari, Chrome, Firefox, Opera		
Video Management Software		
Microsoft Windows 7 & 10		
ezMaster System Requirements		
Recommended environment for managing up to 500 APs		
CPU: Intel® Core™ i3 3.6 GHz dual-core or above		
RAM: 4 GB minimum		
HDD: 500 GB (actual requirement dependent on log size)		
OS: Microsoft® Windows® 7 or later + VMware® Player 7.0 or compatible virtualization software		
Recommended environment for managing up to 1,000+ APs		
CPU: Intel® Core™ i5 3.2 GHz quad-core or above		
RAM: 4 GB minimum		
HDD: 500 GB (actual requirement dependent on log size)		
OS: Microsoft® Windows® 7 or later + VMware® Player 7.0 or compatible virtualization software		
Browser Requirements		
Internet Explorer 10 or better		
Firefox 34.0 or better		
Chrome 31.0 or better		
Safari 8.0 or better		
Network Topology Requirements		
At sites where APs are deployed: A DHCP-enabled network for APs to obtain an IP address		
Environment & Mechanical		
Temperature Range		
Operating: 32°F to 122°F, 0°C to 50°C		

Technical Specifications continued

Humidity (Non-condensing):

Operating: 80% or less

Storage: 80% or less

Device Dimensions & Weights

Weight: 1.11 lbs.

Diameter: 5.27" (134 mm)

Height: 3.81" (97 mm)

Packaging

Weight: 2.05 lbs. (0.93 kg)

Width: 6.37" (162 mm)

Length: 8.74" (222 mm)

Height: 4.88" (124 mm)

Master Carton

Weight: 17.95 lbs. (8.14 kg)

Width: 13.46" (342 mm)

Length: 20.35" (517 mm)

Height: 9.09" (231 mm)

No. of boxes per carton: 8

Package Contents

EWS1025CAM

12V/1.5A Power Adapter

Mounting Bracket

Mounting Screw Set

T-Rail Mounting Kit

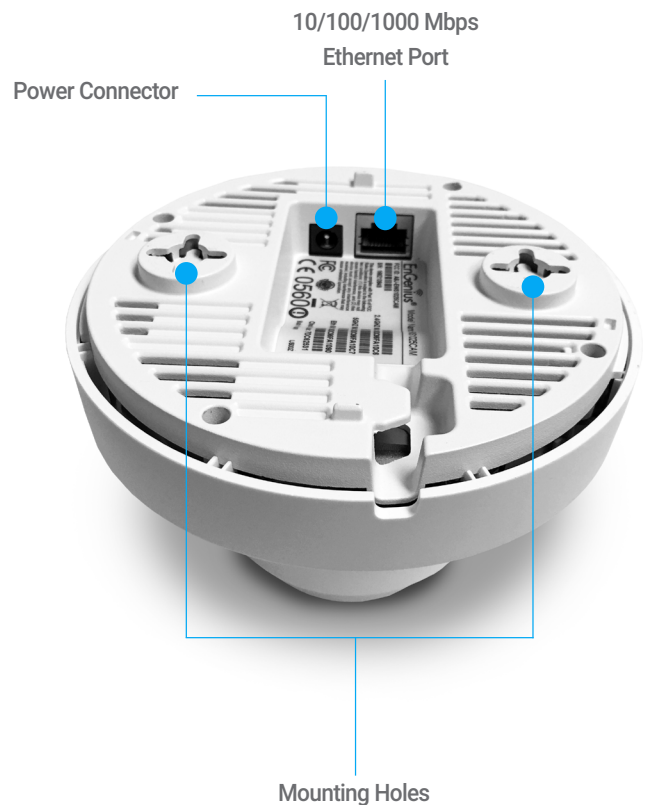
RJ45 Ethernet Cable

Quick Installation Guide

Certifications

FCC, IC

EWS1025CAM



Maximum data rates are based on IEEE 802.11 standards. Features and specifications subject to change without notice. Trademarks and registered trademarks are the property of their respective owners. For United States of America: Copyright ©2017 EnGenius Technologies, Inc. All rights reserved.