

# 16-Port 10/100/1000Mbps Gigabit Ethernet Switch



## *Cost-Effective Gigabit Solution for Enterprise Backbone and Data Center Networking*

PLANET GSW-1601 provides 16 RJ-45 10/100/1000Mbps ports for high-speed network connectivity. It can automatically identify and determine the correct transmission speed and half / full duplex mode of the attached devices with its 16 Gigabit ports that support 9K jumbo frame feature. Therefore, the GSW-1601 can handle extremely large amounts of data transmission in a secure topology linking to a backbone or high-power servers.

## *High Performance*

The GSW-1601 provides high performance architecture of switch that is capable of providing the non-blocking switch fabric and wire-speed throughput as high as 32Gbps, which greatly simplifies the tasks of upgrading the LAN for catering to increasing bandwidth demands. Besides, the Flow Control function of the GSW-1601 enables routers and servers directly connect to the Switch for fast and reliable data transfer.

All RJ-45 copper interfaces in the GSW-1601 support 10/100/1000Mbps Auto-Negotiation for optimal speed detection through RJ-45 Category 6, 5 or 5e cables. It also supports standard for Auto-MDI/MDI-X that can detect the type of connection to any Ethernet device without requiring special straight or crossover cables.

## *Excellent Traffic Transmission*

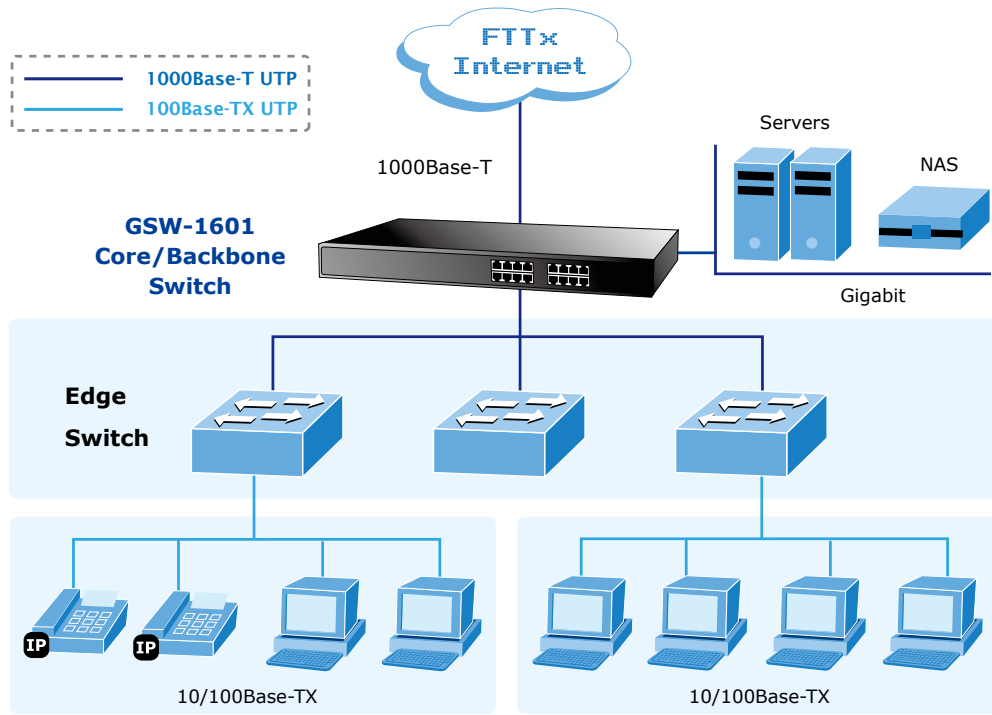
The GSW-1601 supports Store-and-Forward forwarding scheme to ensure low latency and high data integrity, which eliminates unnecessary traffic and relieves congestion on critical network paths. With an intelligent address recognition algorithm, the GSW-1601 could recognize up to 8K different MAC address. The high data throughput and 32Gbps internal switching fabric makes it ideal for most Gigabit environments, especially when network upgrades to a Gigabit environment.

- Comply with IEEE 802.3, 10Base-T, IEEE 802.3u 100Base-TX, IEEE 802.3ab 1000Base-T Ethernet standard
- 16 10/100/1000Mbps Gigabit Ethernet ports
- Features Store-and-Forward mode with wire-speed filtering and forwarding rates
- Hardware based 10/100Mbps, half / full duplex and 1000Mbps full duplex mode, flow control and auto-negotiation
- IEEE 802.3x flow control for full duplex operation and Backpressure for half duplex operation
- Integrated address look-up engine, supports 8K absolute MAC addresses
- 9K Jumbo packet support
- Automatic address learning and address aging
- Supports Auto MDI/MDI-X function
- Supports CSMA/CD protocol
- 100-240V AC, 0.6A, 50/60Hz universal Power input
- FCC, CE class A compliant

## Applications

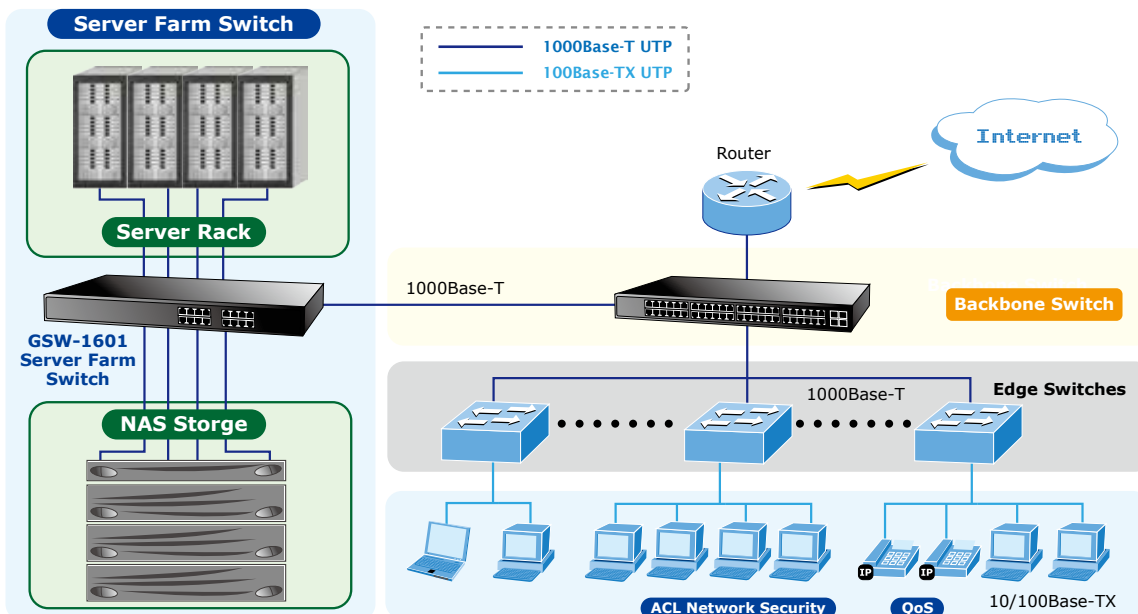
### Backbone Switch

With up to 32 Gigabits per second of non-blocking switch fabric, the GSW-1601 can easily provide the high bandwidth required both now and future.



### Server Farm Switch

Providing 16 Gigabit Ethernet ports, the GSW-1601 is ideal to be used as a server farm Switch connecting to your servers and powerful desktops.



## Specifications

Model	GSW-1601
<b>Hardware Specifications</b>	
Hardware Version	Version 5
10/100/1000Base-T MDI/MDIX Ports	16
Throughput (packet per second)	23.8Mpps
Switch Fabric	32Gbps / non-blocking
Weight	1.9kg
Power Consumption / Dissipation	13 watts / 44 BTU
Power Requirements	100-240V AC, 0.6A, 50/60Hz
Dimensions (W x D x H)	440 x 180 x 44 mm, 1U height
Switch Processing Scheme	Store-and-Forward
Address Table	8K entries
Jumbo Packet Size	9K
Flow Control	Back pressure for half duplex, IEEE 802.3x Pause Frame for full duplex
<b>Standards Conformance</b>	
Regulation Compliance	FCC Part 15 Class A, CE
Standards Compliance	IEEE 802.3 (Ethernet) IEEE 802.3u (Fast Ethernet) IEEE 802.3ab(Gigabit Ethernet) IEEE 802.3x (Full-Duplex Flow Control)
<b>Environmental Specifications</b>	
Temperature	Operating: 0~50 degrees C Storage: -10~70 degrees C
Humidity	Operating: 5~95% Storage: 5~95% (Non-condensing)

\* The specification is for GSW-1601 hardware version 5 only.

## Ordering Information

GSW-1601	16-Port 10/100/1000Mbps Gigabit Ethernet Switch
----------	---