

Repair



FinishPro CompPack Compressor

313440E
EN

- For portable spray applications of fine finish coatings -

120 Vac Model: 256850

240 Vac Model: 256854, 25A445

Maximum Working Pressure: 10 psi (0,07 MPa, 0.7 bar)



Important Safety Instructions

Read all warnings and instructions in the sprayer manual, 313406. Save these instructions.



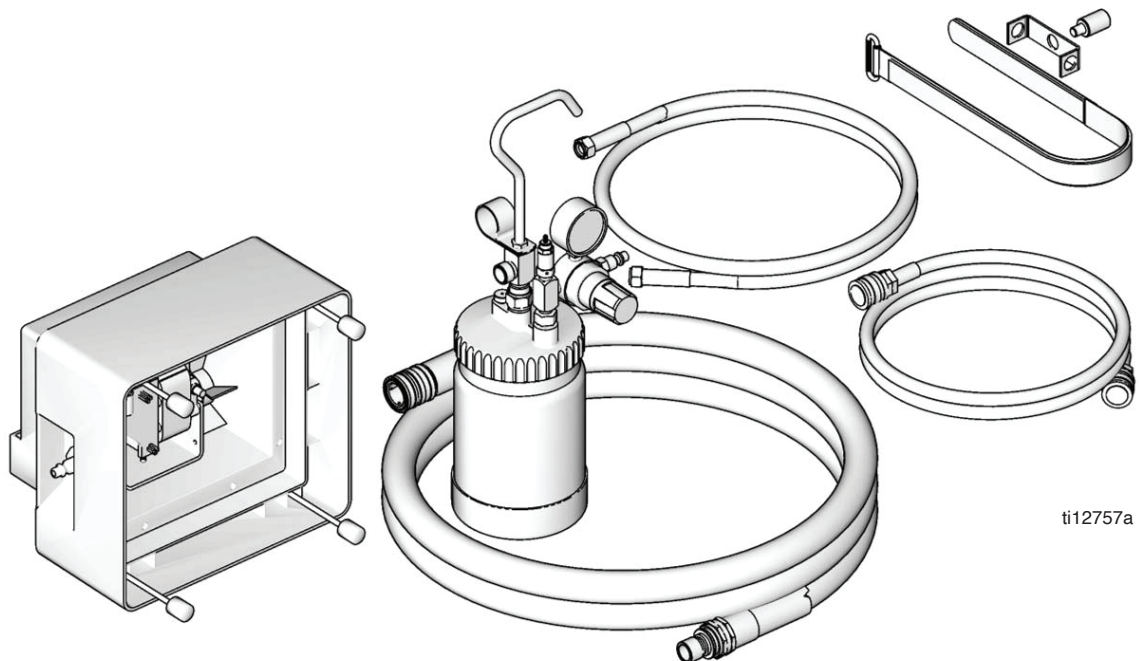
313317



313406



313441



ti12757a

PROVEN QUALITY. LEADING TECHNOLOGY.

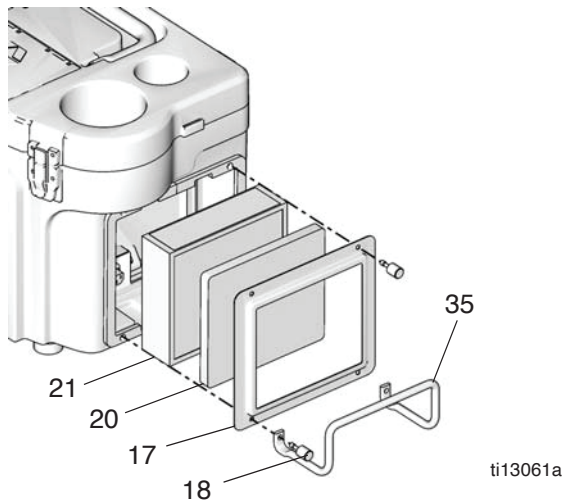


Setup

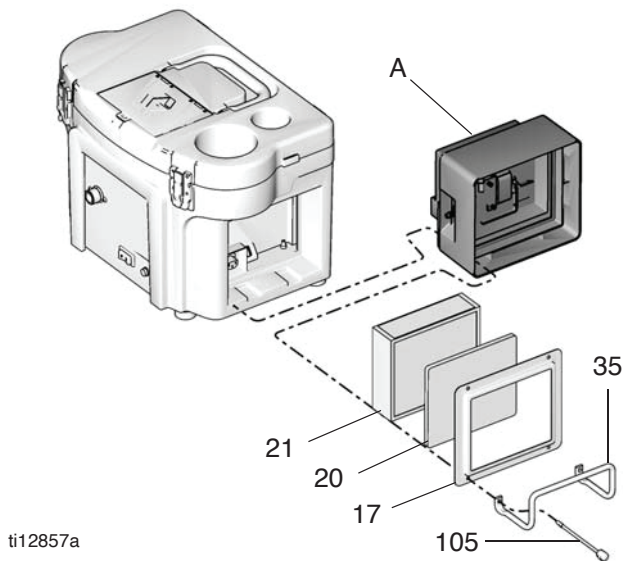
CompPack Installation

For references (1) - (99), see **Parts**, manual 313406. For reference numbers(101) - (199) see **Parts**, page 7.

1. Turn off and unplug sprayer.
2. Loosen four screws (18), remove hose wrap (35), filter retainer (17), pre-filter (20) and main filter (21).

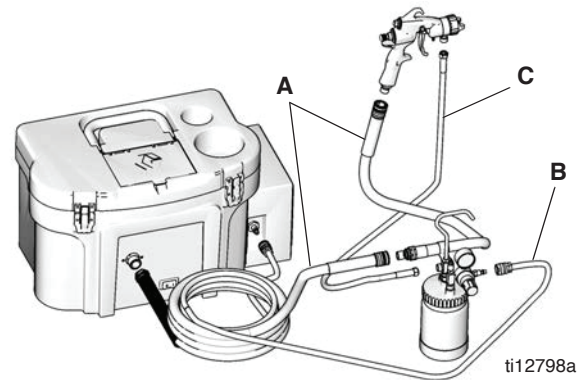


3. Install CompPack (A) on sprayer.



4. Install main filter (21), pre-filter (20), filter retainer (17) and hose wrap (35) with four screws (105).

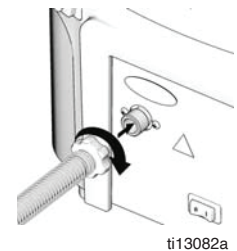
Spray Gun with Optional Remote Cup



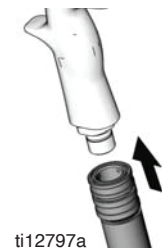
The optional remote cup comes with two hoses.

1. Connect the short hoses to their matching long sprayer hoses.
2. Convert spray gun from siphon cup operation to remote cup operation. See **Convert Gun from Siphon Cup to Optional Remote Cup**.

3. Connect air hose (A) to sprayer. Hand tighten. Do not connect whip hose direct to sprayer. Connect whip hose to gun end of hose only.

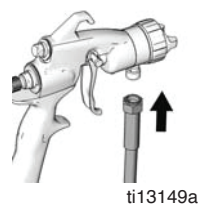
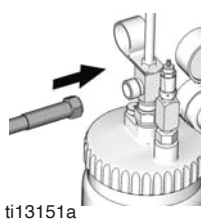


4. Connect air hose (A) from sprayer to inlet fitting of spray gun.



5. Connect air hose (B) between CompPack outlet and remote cup air inlet.

- Connect fluid supply hose (C) from remote cup fluid outlet to spray gun fluid inlet.

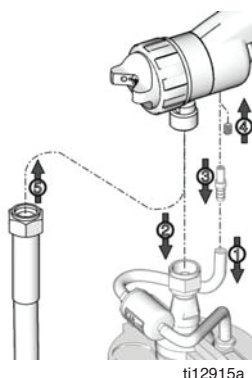


- Fill cup 3/4 full. Install cover. Screw remote cup cover to secure it to remote cup.
- Refer to spray gun manual 313317 for spraying instructions.



Convert Gun from Siphon Cup to Optional Remote Cup

- Remove air pressure tube from air stem.
- Remove siphon cup cover from gun.
- Remove air stem from gun.
- Apply medium strength thread locker to set screw. Install set screw into gun flush with gun body.
- Connect fluid supply hose.



Note: To convert from remote cup to siphon cup, reverse these instructions.

Connect to Electric Supply

Plug sprayer power cord into grounded outlet. Grounding and Electric Requirements, page 4, manual 313406.

Pressure Relief Procedure



WARNING

The optional remote cup remains pressurized until pressure is manually relieved. To reduce the risk of serious injury from pressurized fluid or accidental spray from gun, always **relieve pressure** in the remote cup before loosening or removing the cover. Also, **relieve pressure** if the fluid nozzle clogs; and before cleaning, checking or servicing equipment.

- Turn off sprayer.
- Unplug sprayer.
- Turn out pressure relief knob (113) one turn. Wait until pressure is completely relieved before removing cover. Close knob.

Operation Tips



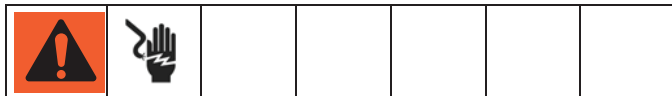
Sparks can be expected during normal operation of motor. These sparks can ignite fumes from flammable liquids, dust particles, and other flammable substances in the spray area.

- Use additional hose if necessary, and ensure the sprayer is operated in clean, dry, well ventilated area.
- Never use sprayer inside spray booth.
- Turn sprayer On a few minutes before spraying to allow warm-up.
- Ensure sprayer filter is clean before operating. Clean filter, page 7, manual 313406.
- To adjust spray gun pattern, see HVLP *EDGE* Gun manual 313317.
- To get proper adhesion, ensure surface is completely clean.
- If the remote cup is accidentally tipped over or held at too great of an angle, fluid may leak into air regulator and cause damage. Take precautions to avoid this. If fluid does get into regulator, clean immediately.
- Only hand-tighten remote cup cover. Excessive tightening may damage cover gasket.
- Always spray with the least amount of pressure required to provide the desired spray pattern and rate of application, typically 10 psi. Spraying at pressures higher than necessary wastes paint and can result in an orange peel finish.
- Lightly coat cover threads with petroleum jelly.

Repair

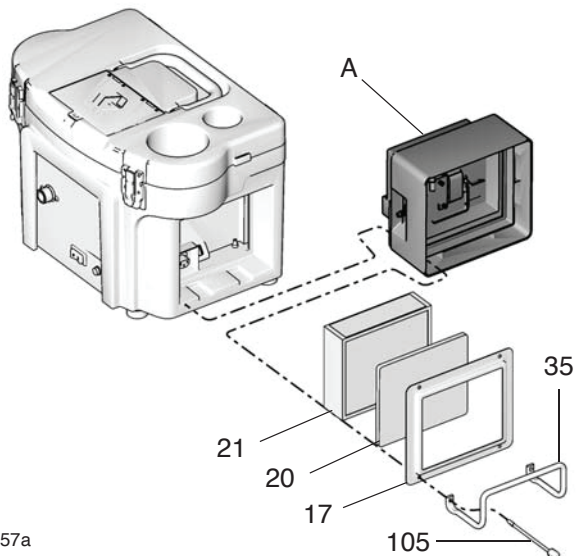
Compressor Removal

For references (1) - (99), see **Parts**, manual 313406. For reference numbers (101) - (199) see **Parts**, page 7.



To avoid injury, including electric shock turn off sprayer and unplug power cord before performing any repair procedures.

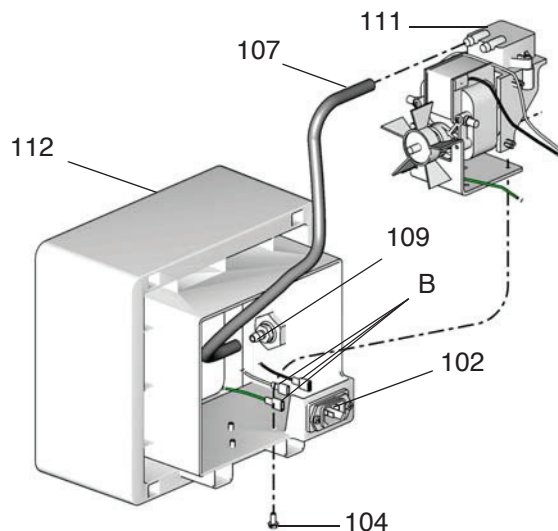
1. Remove four thumbscrews (105) hose wrap (35), remove filter retainer (17), prefilter (20), main filter (21) and filter gaskets (19).
2. Remove CompPack Compressor (A).



ti12857a

3. Remove air tube (107) from quick connector (109) barb fitting.

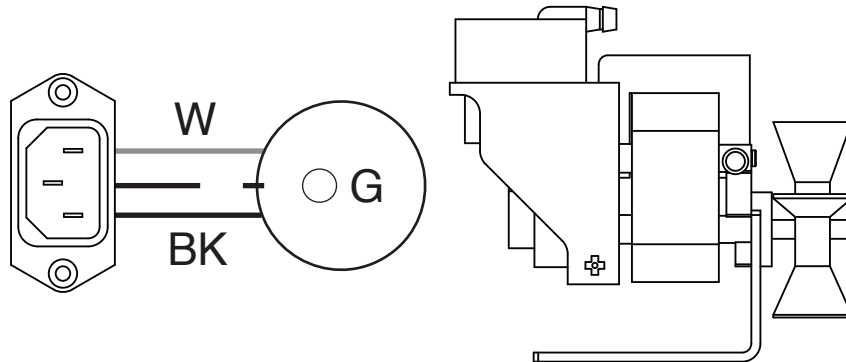
4. Disconnect three spade connectors (B) from back of inlet plug (102).
5. Remove three screws (104) from compressor box (112) and remove compressor (111).



Compressor Installation

1. Install compressor (111) in compressor box (112) with three screws (104).
2. Connect three spade connectors (B) to back of inlet plug (102).
3. Install air tube (107) on quick connector (109) barb fitting.
4. Install CompPack Compressor (A).
5. Install main filter (21), pre-filter (20), filter retainer (17) and hose wrap (35) with four screws (105).

Wiring Diagram



ti13144a

Technical Data

120 Vac, 60 Hz

	Ampere	Watts	Weight lb (kg)	Sound Power*	Sound Pressure*
CompPack	1.5	80	5 (2,7)	79.2 dBa	67.2 dBa

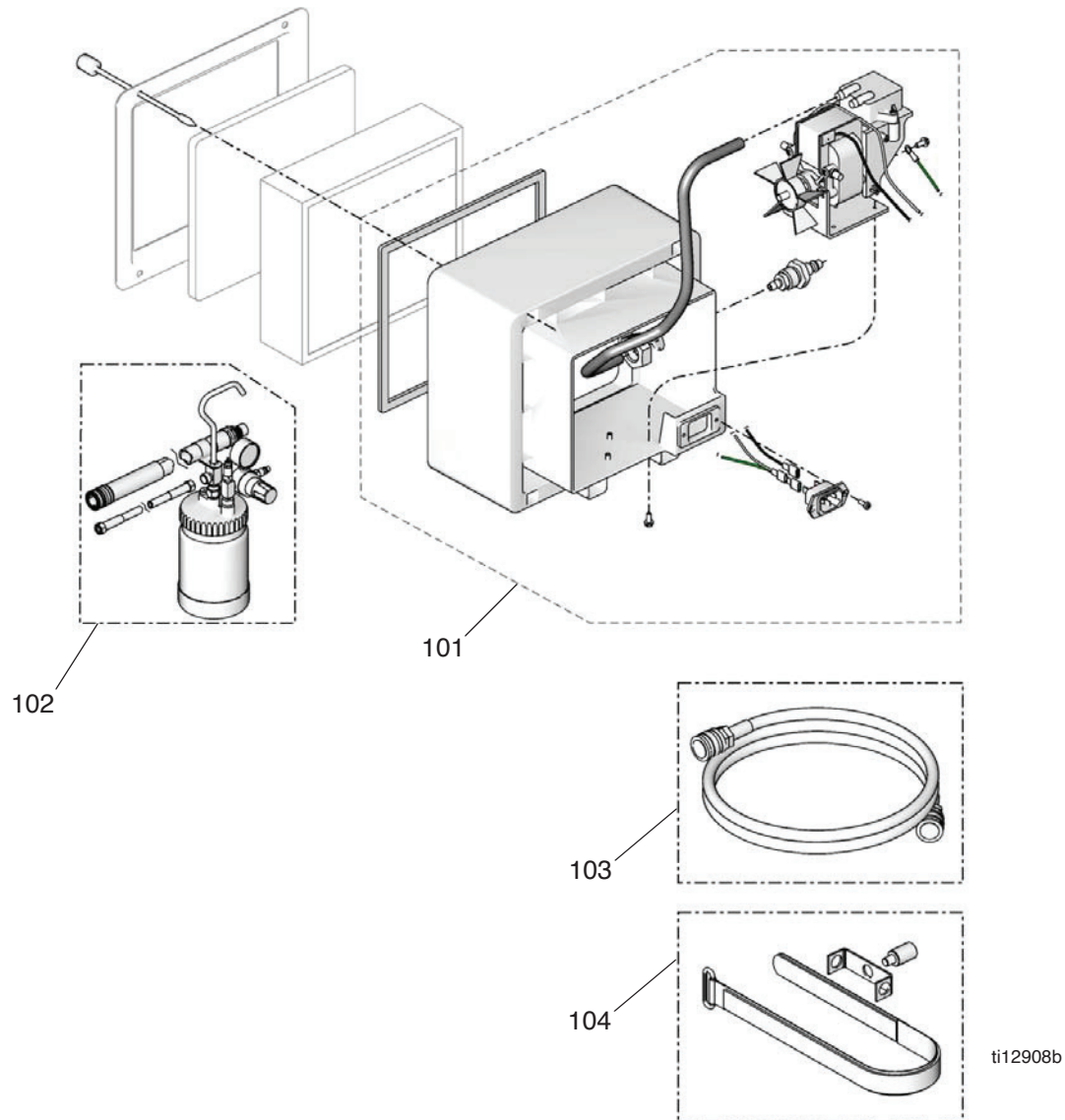
230 Vac, 50 Hz

	Ampere	Watts	Weight lb (kg)	Sound Power*	Sound Pressure*
CompPack	0,8	80	5 (2,7)	79.2 dBa	67.2 dBa

* Sound Power and Sound Pressure are measured at 1 meter per ISO 3744.

Parts Drawing

Models: 256850, 256854



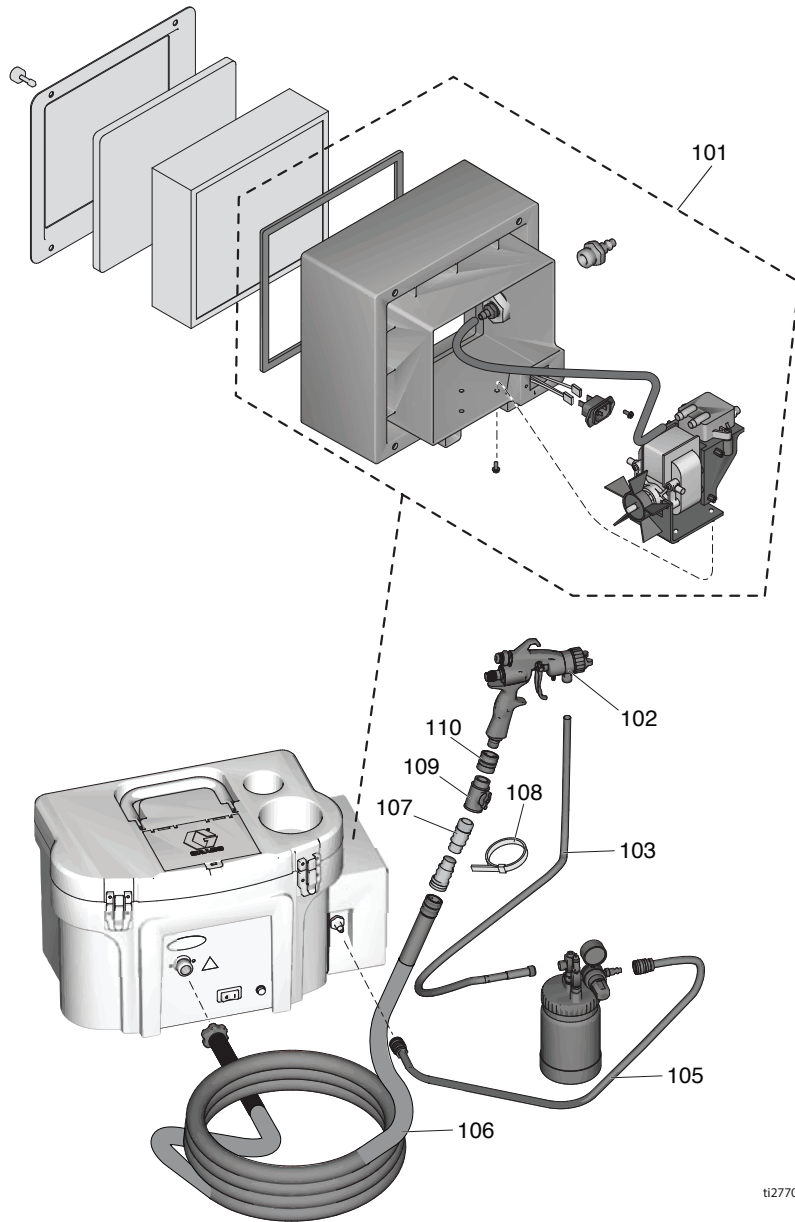
Parts List

Models: 256850, 256854

Ref	Part	Description	Qty
101	15Y858	KIT, compressor box HVLP, 120V	1
	15Y859	KIT, compressor box HVLP, 240V	1
102	257098	KIT CUP, 1 qt complete	1
103	240488	COMPRESSOR, hose	1
104	256959	STRAP, remote, cup	1

Parts Drawing

Models: 25A445



ti27709a

Parts List

Models: 25A445

Ref	Part	Description	Qty
101	15Y859	KIT, compressor	1
102	24Y630	GUN, HVLP, no cup	1
103	240475	HOSE, fluid	1
104	25A433	KIT, repair, 1 qt cup	1
105	17J918	HOSE, air	1
106	17H702	HOSE, air	1
107	257161	HOSE, whip	1
108	114958	STRAP, tie	11
109	240065	VALVE, air control	1
110	M70402	FITTING, female, Q.D.	1

Graco Standard Warranty

Graco warrants all equipment referenced in this document which is manufactured by Graco and bearing its name to be free from defects in material and workmanship on the date of sale to the original purchaser for use. With the exception of any special, extended, or limited warranty published by Graco, Graco will, for a period of twelve months from the date of sale, repair or replace any part of the equipment determined by Graco to be defective. This warranty applies only when the equipment is installed, operated and maintained in accordance with Graco's written recommendations.

This warranty does not cover, and Graco shall not be liable for general wear and tear, or any malfunction, damage or wear caused by faulty installation, misapplication, abrasion, corrosion, inadequate or improper maintenance, negligence, accident, tampering, or substitution of non-Graco component parts. Nor shall Graco be liable for malfunction, damage or wear caused by the incompatibility of Graco equipment with structures, accessories, equipment or materials not supplied by Graco, or the improper design, manufacture, installation, operation or maintenance of structures, accessories, equipment or materials not supplied by Graco.

This warranty is conditioned upon the prepaid return of the equipment claimed to be defective to an authorized Graco distributor for verification of the claimed defect. If the claimed defect is verified, Graco will repair or replace free of charge any defective parts. The equipment will be returned to the original purchaser transportation prepaid. If inspection of the equipment does not disclose any defect in material or workmanship, repairs will be made at a reasonable charge, which charges may include the costs of parts, labor, and transportation.

THIS WARRANTY IS EXCLUSIVE, AND IS IN LIEU OF ANY OTHER WARRANTIES, EXPRESS OR IMPLIED, INCLUDING BUT NOT LIMITED TO WARRANTY OF MERCHANTABILITY OR WARRANTY OF FITNESS FOR A PARTICULAR PURPOSE.

Graco's sole obligation and buyer's sole remedy for any breach of warranty shall be as set forth above. The buyer agrees that no other remedy (including, but not limited to, incidental or consequential damages for lost profits, lost sales, injury to person or property, or any other incidental or consequential loss) shall be available. Any action for breach of warranty must be brought within two (2) years of the date of sale.

GRACO MAKES NO WARRANTY, AND DISCLAIMS ALL IMPLIED WARRANTIES OF MERCHANTABILITY AND FITNESS FOR A PARTICULAR PURPOSE, IN CONNECTION WITH ACCESSORIES, EQUIPMENT, MATERIALS OR COMPONENTS SOLD BUT NOT MANUFACTURED BY GRACO. These items sold, but not manufactured by Graco (such as electric motors, switches, hose, etc.), are subject to the warranty, if any, of their manufacturer. Graco will provide purchaser with reasonable assistance in making any claim for breach of these warranties.

In no event will Graco be liable for indirect, incidental, special or consequential damages resulting from Graco supplying equipment hereunder, or the furnishing, performance, or use of any products or other goods sold hereto, whether due to a breach of contract, breach of warranty, the negligence of Graco, or otherwise.

FOR GRACO CANADA CUSTOMERS

The Parties acknowledge that they have required that the present document, as well as all documents, notices and legal proceedings entered into, given or instituted pursuant hereto or relating directly or indirectly hereto, be drawn up in English. Les parties reconnaissent avoir convenu que la rédaction du présente document sera en Anglais, ainsi que tous documents, avis et procédures judiciaires exécutés, donnés ou intentés, à la suite de ou en rapport, directement ou indirectement, avec les procédures concernées.

ADDITIONAL WARRANTY COVERAGE

Graco does provide extended warranty and wear warranty for products described in the "Graco Contractor Equipment Warranty Program".

Graco Information

For the latest information about Graco products, visit www.graco.com.

For patent information, see www.graco.com/patents.

TO PLACE AN ORDER, contact your Graco distributor or call 1-800-690-2894 to identify the nearest distributor.

*All written and visual data contained in this document reflects the latest product information available at the time of publication.
Graco reserves the right to make changes at any time without notice.*

For patent information, see www.graco.com/patents.

Original instructions. This manual contains English. MM 313440

Graco Headquarters: Minneapolis

International Offices: Belgium, China, Japan, Korea

GRACO INC. AND SUBSIDIARIES • P.O. BOX 1441 • MINNEAPOLIS MN 55440-1441 • USA
Copyright 2009 Graco Inc. All Graco manufacturing locations are registered to ISO 9001.

www.graco.com

Revised E, November 2015