



APRC
Aromatic Plant Research Center



LABORATORY REPORT

SAMPLE NAME: Tea Tree

BOTANICAL NAME: *Melaleuca alternifolia*

COMPANY NAME: Gaea Royals

COMPANY LOT #: 50024

Column: ZB5 (60 m length × 0.25 mm inner diameter × 0.25 µm film thickness)

Instrument: Shimadzu GCMS-QP2010 Ultra

Carrier gas: Helium 80 psi

Temperature ramp: 2 degrees Celsius per minute up to 260-degree Celsius

Split ratio: 30:1

Sample preparation: 5%w/v solution with Dichloromethane

Interpretation on sample:

This oil meets the standard profile of *Melaleuca alternifolia*.

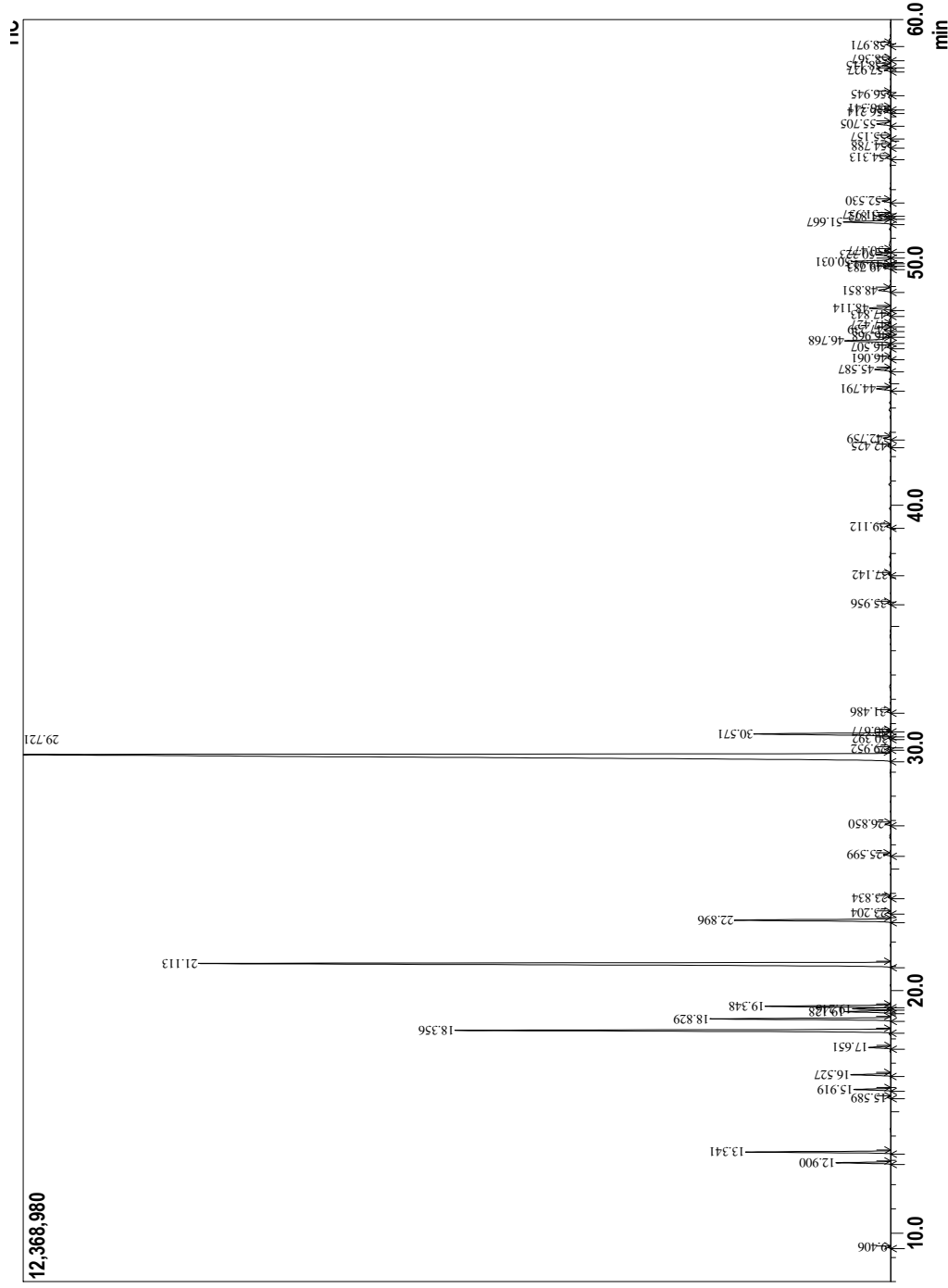
Analyzed by: Dr. Prabodh Satyal

Reviewed by: Ambika Poudel

Issued Date: 9/12/2018

Sample Information

Analyzed by : Dr. Prabodh Satyal
 Analyzed : 9/11/2018
 Sample Type : Essential Oil
 Sample Name : Tea Tree
 Lot# : 50024
 Injection Volume : 0.20



Copyright © 2018 by Aromatic Plant Research Center (APRC). All rights reserved.
 The information contained in this document may not be used, published or redistributed, including online, without the prior written consent of APRC.

Reviewed by: Ambika Poudel

Peak Report TIC

R.Time	Name	Area%
9.406	Hexenol <3Z>	0.04
12.900	Thujene <alpha>	0.91
13.341	Pinene <alpha>	2.51
15.589	Sabinene	0.06
15.919	Pinene <beta>	0.69
16.527	Myrcene	0.74
17.651	Phellandrene <alpha>	0.42
18.356	Terpinene <alpha>	9.38
18.829	Cymene<para>	3.62
19.128	Limonene	0.91
19.246	Phellandrene <beta>	0.75
19.348	1,8-cineole	2.50
21.113	Terpinene <gamma>	19.70
22.896	Terpinolene	3.32
23.204	Cymenene <para>	0.07
23.834	Linalool	0.04
25.599	Menth-2-en-1-ol <cis-p>	0.15
26.850	Menth-2-en-1-ol <trans-p>	0.12
29.721	Terpinen-4-ol	41.23
29.952	Cymen-8-ol<para>	0.06
30.392	Cineole <1,4 hydroxy>	0.04
30.571	Terpineol <alpha>	3.22
30.677	Piperitol<cis>	0.05
31.486	Piperitol<trans>	0.08
35.956	Ascaridol glycol <E>	0.07
37.142	Tea tree	0.04
39.112	4-isopropyl-6-methyl-3-cyclohexene-1,2-diol	0.09
42.425	Isolene	0.06
42.759	Copaene <alpha>	0.18
44.791	Gurjunene <alpha>	0.36
45.587	Caryophyllene <trans>	0.39
46.061	Caryophyllene <9-epi-cis>	0.06
46.507	Maaliene <alpha>	0.07
46.768	Aromadendrene	1.33
46.968	Guaiene<alpha>	0.06
47.239	Myllyl-4(12)-ene	0.18
47.427	Murrola-3,5-diene <trans>	0.08
47.843	Humulene <alpha>	0.07
48.114	Aromadendrene allo	0.54
48.851	Cadina-1(6),4-diene<cis>	0.33
49.783	Selinene <delta>	0.19
49.913	Guala-1(10),11-diene	0.21
50.031	Viridiflorene	1.07
50.323	Bicyclogermacrene	0.42
50.477	Murolene <alpha>	0.16
51.667	Cadinene <delta>	1.18
51.872	Calamene<trans>	0.15
51.957	Zonarene	0.30
52.530	Cadine-1,4-diene <trans>	0.20
54.313	Viridifloral <isomer>	0.11
54.788	Palustrol	0.08
55.157	Spathulenol	0.09
55.705	Globalol	0.38
56.214	Viridifloral	0.18
56.341	Cubeban-11-ol	0.16
56.945	Rosifolol	0.08
57.927	Eudesmol <isomer>	0.16
58.115	Cubanol<1-epi>	0.21
58.367	Spathulenol<iso>	0.05
58.971	Cubanol	0.09
100.00		100.00