



APRC
Aromatic Plant Research Center



LABORATORY REPORT

SAMPLE NAME: Rosemary

BOTANICAL NAME: *Rosmarinus officinalis*

COMPANY NAME: Gaea Royals

COMPANY LOT #: 13059

Column: ZB5 (60 m length × 0.25 mm inner diameter × 0.25 μm film thickness)

Instrument: Shimadzu GCMS-QP2010 Ultra

Carrier gas: Helium 80 psi

Temperature ramp: 2 degrees Celsius per minute up to 260-degree Celsius

Split ratio: 30:1

Sample preparation: 5%w/v solution with Dichloromethane

Interpretation on sample:

This oil meets the standard profile of *Rosmarinus officinalis*.

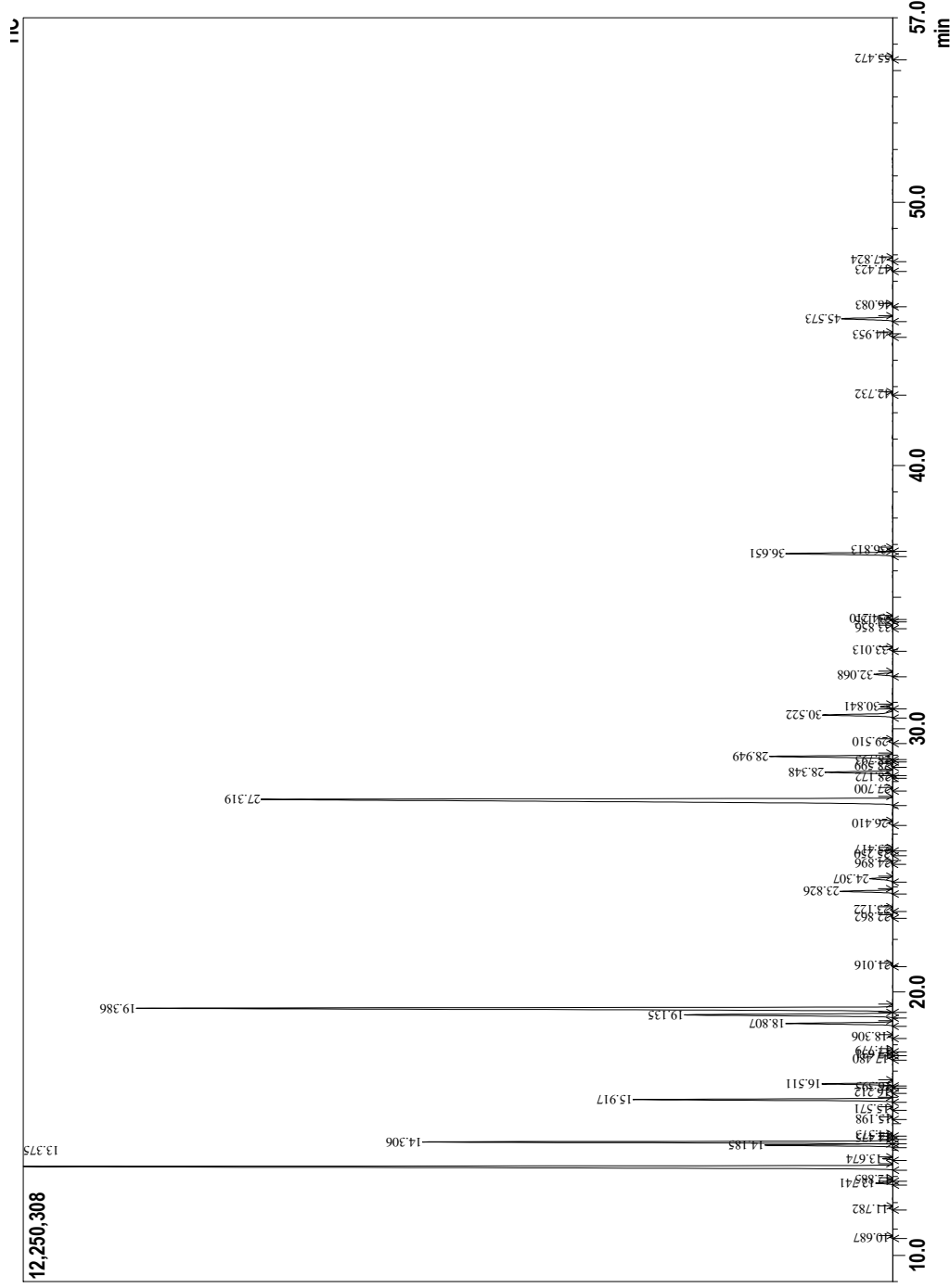
Analyzed by: Dr. Prabodh Satyal

Reviewed by: Ambika Poudel

Issued Date: 9/12/2018

Sample Information

Analyzed by : Dr. Prabodh Satyal
 Analyzed : 9/11/2018
 Sample Type : Essential Oil
 Sample Name : Rosemary
 Lot# : 13059
 Injection Volume : 0.20



Peak Report TIC

R.Time	Peak Name	Area%
10.687	Cyclofenchene	0.04
11.782	Bornylene	0.07
12.741	Tricyclene	0.29
12.885	Thujene<alpha>	0.02
13.375	Pinene <alpha>	19.73
13.674	Fenchene<beta>	0.16
14.185	Fenchene <alpha>	2.49
14.306	Camphene	8.87
14.475	Thuja-2,4(10)-diene	0.01
14.573	Rosemary	0.01
15.198	4-Cyclopropylnorcaradiene	0.01
15.571	Sabinene	0.05
15.917	Pinene<beta>	4.90
16.212	Isolimonene trans	0.03
16.395	Menthene<3-p>	0.01
16.511	Myrcene	1.31
17.480	Pseudolimonene	0.07
17.631	Phellandrene<alpha>	0.02
17.779	Carene<delta-3>	0.02
18.306	Terpinene <alpha>	0.08
18.807	Cymene<para>	2.18
19.135	Limonene	5.07
19.386	1,8-cineole	18.76
21.016	Terpinene<gamma>	0.03
22.862	Terpinolene	0.03
23.122	Fenchone	0.05
23.826	Linalool	1.11
24.307	Isocamphone	0.57
24.896	Fenchol<iso>	0.02
25.250	Fenchol<endo>	0.06
25.417	Rosemary	0.03
26.410	Terpin-3-en-1-ol	0.10
27.319	Camphor	22.37
27.700	Camphene hydrate	0.03
28.172	Bornanone	0.02
28.348	Isoborneol	1.51
28.599	Terpineol <trans-beta>	0.03
28.793	Terpineol <delta>	0.02
28.949	Borneol	2.86
29.510	Terpinen-4-ol	0.09
30.522	Terpineol <alpha>	1.72
30.841	Terpineol<gamma>	0.26
32.068	Fenchyl acetate <endo>	0.44
33.013	Fenchyl acetate<exo>	0.08
33.856	Rosemary	0.02
34.135	Sabinene hydrate acetate<Z>	0.04
34.210	Linalyl acetate	0.15
36.651	Bornyl acetate	2.47
36.813	Isobornyl acetate	0.11
42.732	Copaene <alpha>	0.02
44.953	Longifolene	0.10
45.573	Caryophyllene <trans>	1.27
46.083	Ylangene <beta>	0.02
47.423	Spiropechinene	0.03
47.824	Humulene <alpha>	0.12
55.472	Caryophyllene oxide	0.02
100.000		100.00

Copyright © 2018 by Aromatic Plant Research Center (APRC). All rights reserved.
 The information contained in this document may not be used, published or redistributed, including online, without the prior written consent of APRC.

Reviewed by: Ambika Poudel