



**APRC**  
Aromatic Plant Research Center



## LABORATORY REPORT

**SAMPLE NAME:** Patchouli Light

**BOTANICAL NAME:** *Pogostemon cablin*

**COMPANY NAME:** Gaea Royals

**COMPANY LOT #:** L137847

**Column:** ZB5 (60 m length × 0.25 mm inner diameter × 0.25 µm film thickness)

**Instrument:** Shimadzu GCMS-QP2010 Ultra

**Carrier gas:** Helium 80 psi

**Temperature ramp:** 2 degrees Celsius per minute up to 260-degree Celsius

**Split ratio:** 30:1

**Sample preparation:** 5%w/v solution with Dichloromethane

**Interpretation on sample:**

This oil meets the standard profile of *Pogostemon cablin*.

**Analyzed by:** Dr. Prabodh Satyal

**Reviewed by:** Ambika Poudel

**Issued Date:** 8/28/2018

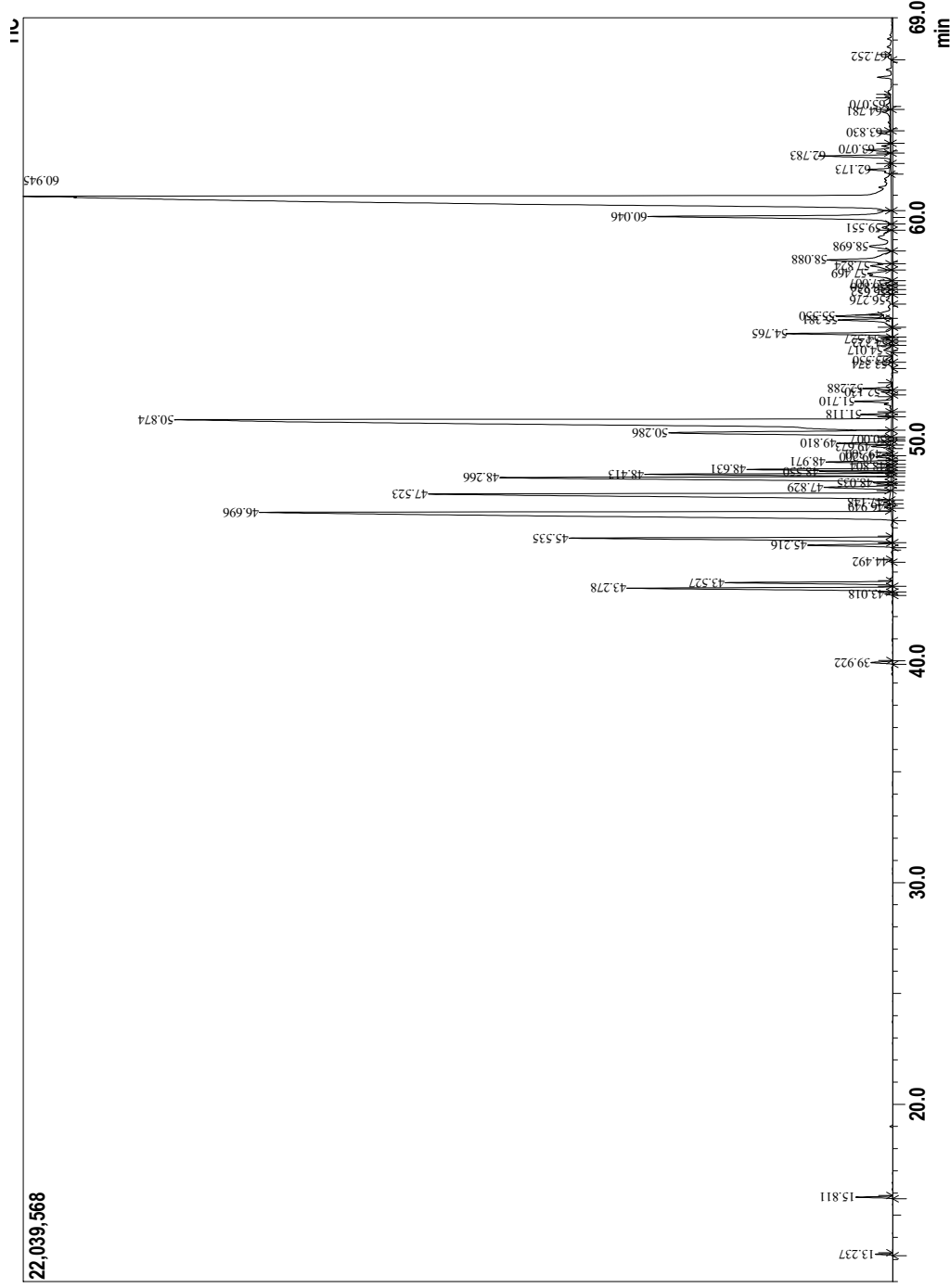
**Sample Information**

Analyzed by : Dr. Prabodh Satyal  
 Analyzed : 8/28/2018 3:41:50 PM  
 Sample Type : Essential Oil  
 Sample Name : Patchouli Light  
 Lot# : L137847  
 Injection Volume : 0.50



**Peak Report TIC**

R.Time	Peak Name	Area%
13.237	Pinene <alpha>	0.09
15.811	Pinene <beta>	0.21
39.922	Elemene <delta>	0.16
43.018	Elemene<beta>-cis>	0.05
43.278	Patchoulene <beta>	2.50
43.527	Elemene<beta>-trans>	1.37
44.492	Caryophyllene <cis>	0.02
45.216	Cycloseychellene	0.68
45.535	Caryophyllene <trans>	3.37
46.696	Gualene <alpha>	12.47
46.949	Patchoulene <4-epi-alpha>	0.04
47.148	Mylal-4(12)-ene	0.04
47.523	Seychellene	6.67
47.829	Humulene <alpha>	0.66
48.035	Aromaderene dehydro isomer	0.15
48.266	Patchoulene alpha	4.90
48.413	Caryophyllene<9-epi> isomer	1.96
48.550	Farnesene<(E)-beta>	0.45
48.631	Caryophyllene<9-epi> isomer	1.10
48.804	Chamigrene<beta>	0.04
48.971	Patchouli	0.53
49.200	Gurjunene gamma	0.14
49.300	Germacrene D	0.07
49.673	Gualene<cis>-beta->	0.15
49.810	Selinene <beta>	0.43
50.007	Valencene	0.04
50.286	Aciphyllene	3.27
50.874	Bulnesene <alpha>	17.32
51.118	Nootkatene	0.24
51.710	Parasinsen <(-)-alpha>	0.37
52.130	Vetivene	0.09
52.288	Nootkatene isomer	0.24
53.374	Elemol <alpha>	0.05
53.550	Patchouli	0.04
54.017	Germacrene B	0.09
54.322	Patchouli	0.03
54.527	Patchouli	0.09
54.765	Norpatchulenol D	0.98
55.381	Caryophyllene oxide	0.61
55.550	Patchouli	0.43
56.276	Viridiflorol	0.13
56.652	Patchouli	0.07
56.850	Patchouli	0.07
57.007	Humulene epoxide II	0.08
57.469	Patchouli	0.57
57.824	Patchouli	0.34
58.088	Patchouli	1.15
58.698	trans-Guar-11-en-10-ol	0.80
59.551	Palustrol isomer	0.14
60.046	Pogostol	3.25
60.945	Patchouli alcohol	29.67
62.173	Thujopsenol <cis>	0.22
62.783	Pogostone	0.66
63.070	Allantone isomer	0.31
63.830	Zizanone	0.10
64.781	Allantone <E>-alpha>	0.17
65.070	Patchouli	0.09
67.252	Patchouli	0.05
		100.00



Copyright © 2018 by Aromatic Plant Research Center (APRC). All rights reserved.  
 The information contained in this document may not be used, published or redistributed, including online, without the prior written consent of APRC.

**Reviewed by: Ambika Poudel**