



APRC
Aromatic Plant Research Center



gaea
ROYALS

LABORATORY REPORT

SAMPLE NAME: Cypress

BOTANICAL NAME: *Cupressus*

COMPANY NAME: Gaea Royals

COMPANY LOT #: 48380

Column: ZB5 (60 m length × 0.25 mm inner diameter × 0.25 μm film thickness)

Instrument: Shimadzu GCMS-QP2010 Ultra

Carrier gas: Helium 80 psi

Temperature ramp: 2 degrees Celsius per minute up to 260-degree Celsius

Split ratio: 30:1

Sample preparation: 5% w/v solution with Dichloromethane

Interpretation on sample:

This oil meets the standard profile of *Cupressus*.

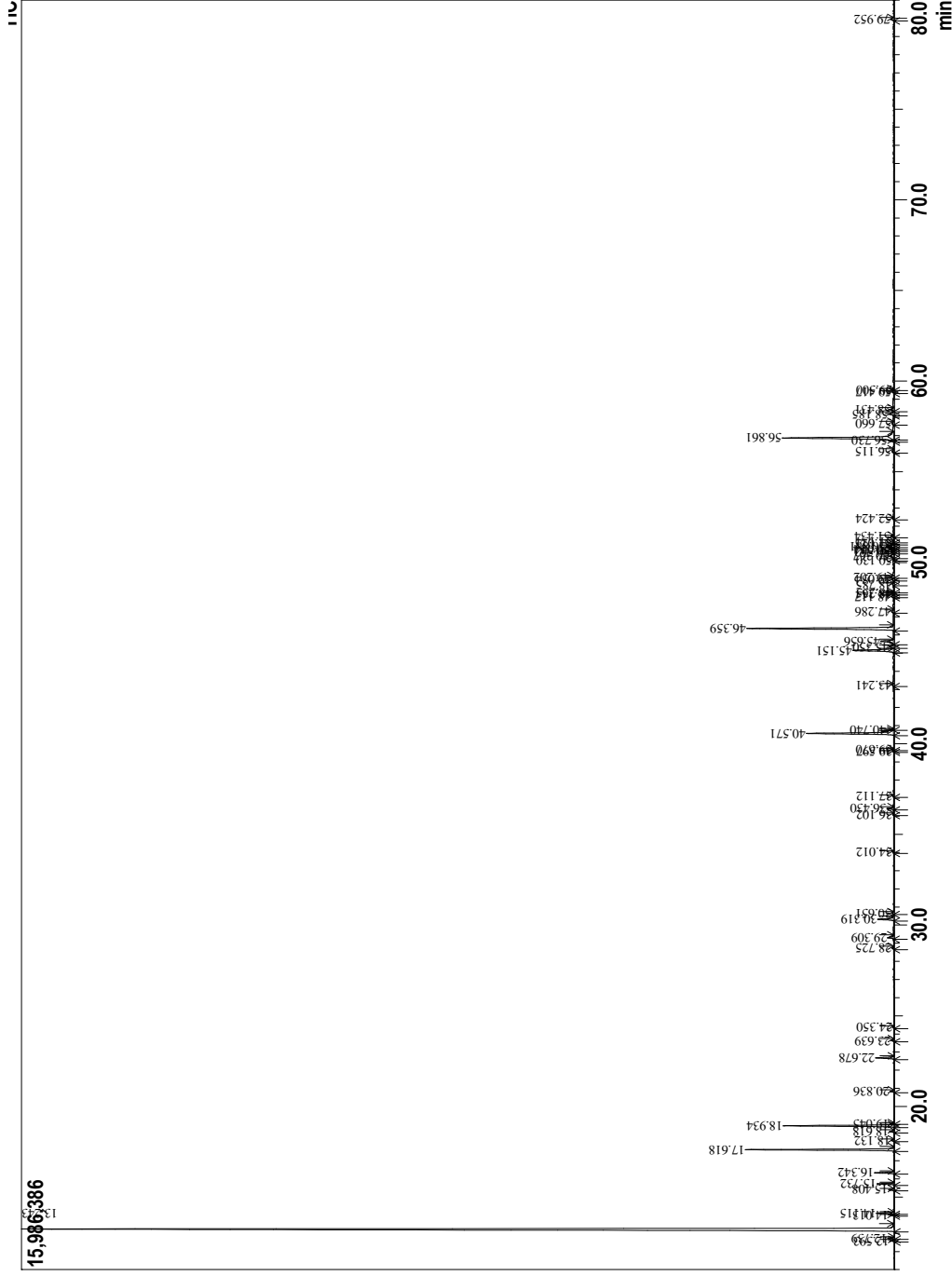
Analyzed by: Dr. Prabodh Satyal

Reviewed by: Ambika Poudel

Issued Date: 9/28/2018

Sample Information

Analyzed by : Dr. Prabodh Satyal
 Analyzed : 9/27/2018 8:43:41 PM
 Sample Type : Essential Oil
 Sample Name : Cypress
 Lot# : 48380
 Injection Volume : 0.10



Peak Report TIC

R.Time	Peak Name	Area%
12.593	Tricyclene	0.17
12.739	Thujene <alpha>	0.25
13.243	Pinene<alpha>	52.83
14.013	Fenchene <alpha>	0.17
14.115	Camphene	0.65
15.408	Sabinene	0.22
15.732	Pinene <beta>	0.70
16.342	Myrcene	0.79
17.618	Carene<delta-3>	6.51
18.132	Terpinene <alpha>	0.13
18.618	Cymene<para>	0.21
18.934	Limonene	4.97
19.045	Phellandrene <beta>	0.17
20.836	Terpinene <gamma>	0.18
22.678	Terpinolene	0.88
23.639	Pinene alpha epoxide+Linalool	0.14
24.350	Thujol isomer	0.04
28.725	Borneol	0.08
29.309	Terpinen-4-ol	0.30
30.319	Terpineol <alpha>	0.87
30.651	Terpineol<gamma>	0.07
34.012	Linalyl acetate	0.05
36.102	Terpinyl acetate <beta>	0.04
36.430	Bornyl acetate	0.34
37.112	Thujanol acetate neoiso	0.04
39.597	Dihydrocarveol-acetate<iso>	0.05
39.670	Terpinyl acetate<4>	0.06
40.571	Terpinyl acetate <alpha>	5.39
40.740	Cypress	0.13
43.241	Duprezianene <alpha>	0.08
45.151	Cedrene <alpha>	2.57
45.350	Caryophyllene <trans>	0.26
45.656	Cedrene<beta>	0.80
46.359	Thujopsene<Z>	8.60
47.286	Himachalene <alpha>	0.13
48.117	Acoradiene <alpha>	0.12
48.264	Acoradiene <beta>	0.07
48.335	Thujopsadiene	0.04
48.785	Cadina-1(6),4-diene <trans>	0.06
49.054	Himachalene <gamma>	0.07
49.202	Gurjunene<gamma>	0.18
50.130	Valencene	0.06
50.367	Himachalene <beta>	0.31
50.563	Cuprenene <alpha>	0.15
50.644	Pseudowiddrene	0.16
50.754	Chamigrene <alpha>	0.23
50.881	Cuparene	0.47
51.023	Alaskene <alpha>	0.12
51.134	Amorphene <delta>	0.05
51.434	Cadinene <delta>	0.14
52.424	Cuprenene <gamma>	0.07
56.115	Cedrol <allo>	0.14
56.730	Widdrol	0.27
56.861	Cedrol	7.59
57.660	Cedrol <epi>	0.10
58.185	Acorenol <alpha>	0.28
58.431	Acorenol <beta>	0.12
59.417	Himachalol<beta>	0.12
59.500	Cypress	0.03
79.952	Ricinaldic acid lactone	0.18
		100.00

Copyright © 2018 by Aromatic Plant Research Center (APRC). All rights reserved.
 The information contained in this document may not be used, published or redistributed, including online, without the prior written consent of APRC.

Reviewed by: Ambika Poudel