



APRC
Aromatic Plant Research Center



LABORATORY REPORT

SAMPLE NAME: Bergamot Oil 2006

BOTANICAL NAME: *Citrus bergamia*

COMPANY NAME: Gaea Royals

COMPANY LOT #: 11124

Column: ZB5 (60 m length × 0.25 mm inner diameter × 0.25 µm film thickness)

Instrument: Shimadzu GCMS-QP2010 Ultra

Carrier gas: Helium 80 psi

Temperature ramp: 2 degrees Celsius per minute up to 260-degree Celsius

Split ratio: 30:1

Sample preparation: 5% w/v solution with Dichloromethane

Interpretation on sample:

This oil meets the standard profile of *Citrus bergamia*.

Analyzed by: Dr. Prabodh Satyal

Reviewed by: Ambika Poudel

Issued Date: 10/6/2018

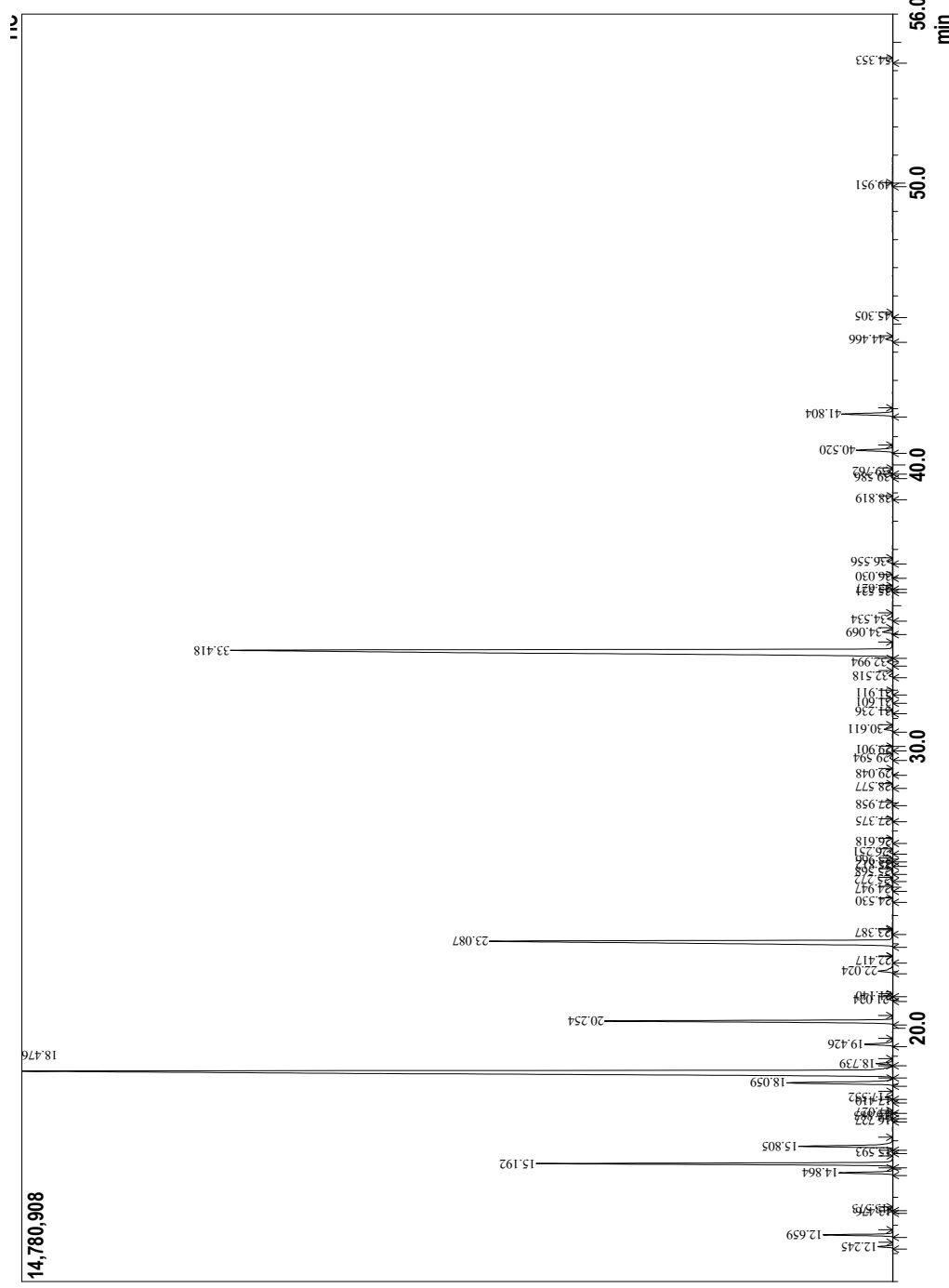
Analyzed by
 Analyzed : Dr. Prabodh Satyal
 Sample Type : 10/6/2018 12:46:51 AM
 Sample Name : Essential Oil
 Lot# : Bergamot Oil 2006
 Injection Volume : 11124
 : 0.20

Sample Information



Peak Report TIC

R.Time	Name	Area%
12.245	Thujene <alpha>	0.24
12.659	Pinene <alpha>	1.14
13.476	Fenchene <alpha>	0.01
13.573	Camphene	0.07
14.864	Sabinene	0.98
15.192	Pinene <beta>	6.89
15.593	Hept-5-en-2-one <6-methyl>	0.01
15.805	Myrcene	1.98
16.727	Octan-1-ol	0.02
16.883	Phellandrene<alpha>	0.06
17.027	Carene<delta-3>	0.01
17.410	1,4-Cineole	0.01
17.552	Terpinene <alpha>	0.17
18.059	Cymene<para>	2.55
18.476	Limonene	33.43
18.739	Ocimene<Z>-beta>	0.34
19.426	Ocimene <E>-beta>	0.61
20.254	Terpinene <gamma>	6.29
21.024	Linalool oxide <cis>-furanoid>	0.07
21.140	Pinol	0.01
22.024	Terpinolene	0.39
22.417	Cymene<para>	0.02
23.087	Linalool	12.93
23.387	Nonanal	0.01
24.530	Mentha-2,8-dien-1-ol<trans>-para>	0.01
24.947	Ocimene<allo>	0.03
25.272	Limonene oxide<cis>	0.03
25.568	Limonene oxide<trans>	0.03
25.812	Phellandrene epoxide	0.01
25.966	Terpinolene<epoxy>	0.01
26.251	Camphor	0.07
26.618	Citronellal	0.01
27.375	2,6-Dimethyl-3,5,7-octatriene-2-ol, E,E-	0.01
27.958	Borneol	0.01
28.577	Terpinen-4-ol	0.02
29.048	Cymen-8-ol<spara>	0.02
29.594	Terpineol<alpha>	0.07
29.901	Dihydrocarveol	0.01
30.611	Octyl acetate	0.19
31.236	Carveol<trans>	0.02
31.601	Nerol	0.01
31.911	Pinyl acetate <cis>	0.02
32.518	Neral	0.09
32.994	Linalool oxide acetate <Z>	0.14
33.418	Linalyl acetate	28.16
34.069	Linalool oxide acetate <E>	0.22
34.534	Geranial	0.13
35.521	Pinyl acetate <trans>	0.02
35.627	Bornyl acetate	0.01
36.030	Thymol	0.01
36.556	Carvacrol	0.12
38.819	Terpendiol	0.01
39.586	Hydroxylinalool A	0.04
39.762	Terpinyl acetate<alpha>	0.09
40.520	Neryl acetate	0.81
41.804	Geranyl acetate	1.14
44.466	Caryophyllene <trans>	0.17
45.305	Bergamotene <trans>-alpha>	0.03
49.951	Bisabolene <beta>	0.02
54.353	Caryophyllene oxide	0.01
		100.00



Copyright © 2018 by Aromatic Plant Research Center (APRC). All rights reserved.
 The information contained in this document may not be used, published or redistributed, including online, without the prior written consent of APRC.

Reviewed by: Ambika Poudel