



**MN-000001
TRUCK
WHEEL ALIGNER**



MANATEC

World's 1st 3D Wheel Aligner for multi-axle trucks, buses and trailers

Innovative Image Processing Technology



MN-000001 uses latest, innovative, digital-imaging technology by deploying digital camera system for data-acquisition. High resolution digital cameras operate with intelligent software & capture seamless images of targets

One shot Run Out Compensation of all 5 Axles No Pushing / No Lifting



- One shot Run Out compensation of all 5 axles by driving the vehicle
- Quick results, high productivity
- More number of alignments per day

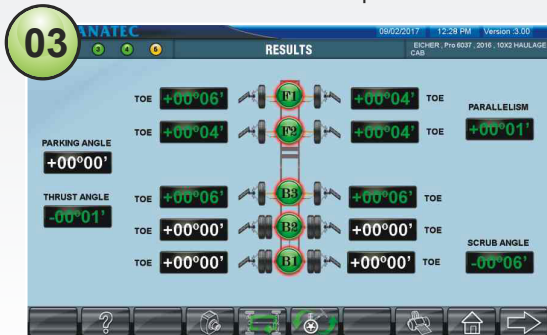
Get Alignment results of all 5 axles under **3 minutes**



One shot Run Out Compensation



One shot Caster swing of twin steer axles



All results in one screen

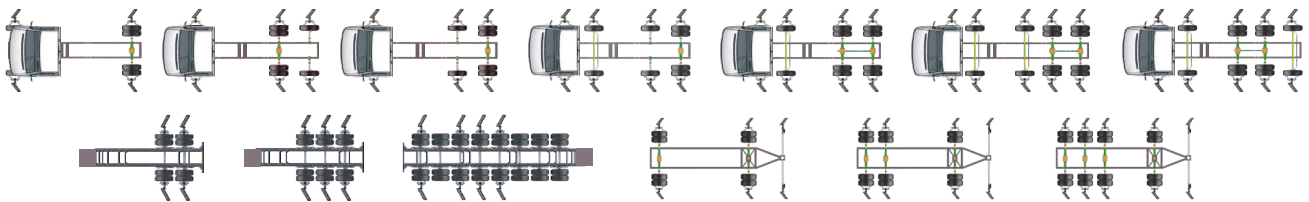


2 mins 50 sec



2 min 50 sec

Any type of Axle Assembly for TRUCKS, TRAILERS & FULL TRAILERS



Tractor & Trailer Alignment



No Electronics on Wheels



Compared to other International brands

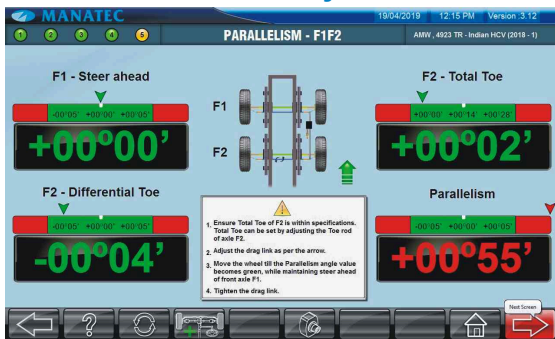
- No expensive service bills due to accidental drop of electronic sensors
- No sensor calibration issues
- No battery discharge issues
- No RF interference
- Compact and light weight

One Shot Caster swing for twin axles



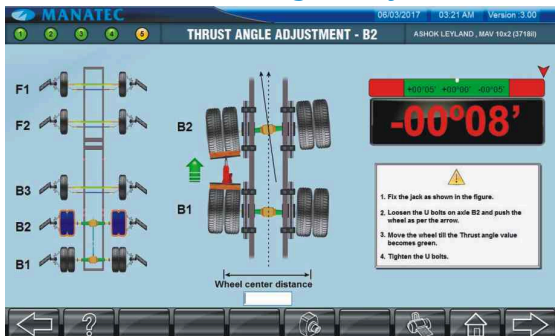
- Caster swing can be performed for twin steer axles simultaneously
- 4 nos Rotary plates supplied as standard accessory
- No need to remove and refix the targets for each axle

Parallelism Adjustment



Alignment of Front twin steerable axles to maintain parallel condition

Thrust / Scrub Angle Adjustment



Alignment of Rear multi axles

Universal Wheel Bracket



Smart Support without Internet (Optional)

Tablet operation

Highly user-friendly Wi-Fi enabled Tablet & Mobile device to display alignment results & to operate PC from Alignment bay. Avoids multiple trips to PC console.



Technical Specifications

Measurement parameters	Range	Accuracy
Camber (Front / Rear)	± 15° 00'	± 00° 02'
Caster	± 28° 00'	± 00° 05'
Kingpin Inclination	± 25° 00'	± 00° 05'
Toe (Front / Rear)	± 20° 00'	± 00° 02'
Total Toe	± 40° 00'	± 00° 04'
Setback (Front / Rear)	± 25 mm	± 2 mm
Scrub / Thrust angle	± 10° 00'	± 00° 02'
Runout	± 10° 00'	± 00° 02'
Included angle	± 40° 00'	± 00° 05'
Track width difference	± 150 mm	± 2 mm
Toe Out on Turns	± 20° 00'	± 00° 20'
Lock angle	± 60° 00'	± 00° 20'
Power supply	110V AC, 60Hz / 230V AC, 50Hz	
Power	250W	
Operating temperature	0° - 50°C	



1-833-602-0226

Chain Block with Ratchet (Rear single axle adjuster) - Optional



- Useful tool for Thrust / Scrub angle adjustment.
- Precise adjustment in quick time.
- Saves considerable time and energy.

Mobile stands for storing Wheel brackets & Targets



- 4 Mobile stands provided for storing Wheel brackets & Targets
- Easy access to technicians
- Saves multiple trips

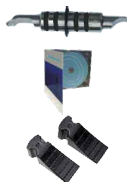


Can be **UPGRADED** from Simultaneous alignment of **5 axles** to **6 axles** at a time.



Car Kit (Optional)

- Rim locking pins (for Runflat tyre rims & Fancy disc) - **16 Nos.**
- Car alignment & Vehicle data software - **1 No.**
- Wheel stoppers - **2 Nos.**



Standard Accessories

- Wheel brackets(12"-24") - **10 Nos.**
- Target plates - **10 Nos.**
- Rotary plates (7 ton) with spacer - **4 Nos.**
- Steering lock - **1 No.**
- Brake pedal lock - **1 No.**
- PC console with Windows10 IoT, Key board & Mouse - **1 No.**
- LED monitor (21.5") HDMI/DP interface - **1 No.**
- LED monitor secondary (21.5") HDMI/DP interface - **1 No.**
- Wheel stoppers - **2 Nos.**
- Truck alignment & Data manager software - **1 No.**
- Target stands (2Tx2, 3Tx2) - **4 Nos.**
- Steering lock (LCV) - **1 No.**
- Brake pedal lock (LCV) - **1 No.**
- Front target plate extension spacer 150 mm long - **6 Nos.**
- Adaptor for rim locking pins - **40 Nos.**



Optional Accessories

- 4 shaft calibration kit - **1 No.**
- Wheel bracket extension adaptors upto 30" - **40 Nos.**
- Rotary plate ramp - **6 Nos.**
- Frame reference gauge - **1 No.**
- Frame offset gauge - **1 No.**
- Tyre dia guage - **1 No.**
- Drawbar gauge (Full trailer) - **1 No.**
- Extension spacer (600 mm) for Drive Thru' calibration kit - **4 Nos.**
- Double end rim locking pins (Steel rims) - **40 Nos.**
- Double end rim locking pins (Low profile Steel rims) - **40 Nos.**
- Double end rim locking pins (Long bolt rims) - **40 Nos.**
- Drive Thru' kit - **1 No.**
- Chain Block with Ratchet (Rear single axle adjuster) - **1 No.**

