

Internal printer (option) can print instantly the results from the milk analyzer or create a paper report for a client by number and liters.



External display (option) shows the same as the milk analyzer display simultaneously after the measurements.



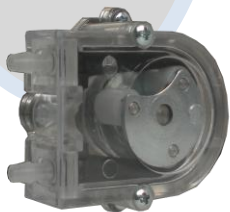
Flash drive (option) is used for collecting and transferring measurement data from the milk analyzer.



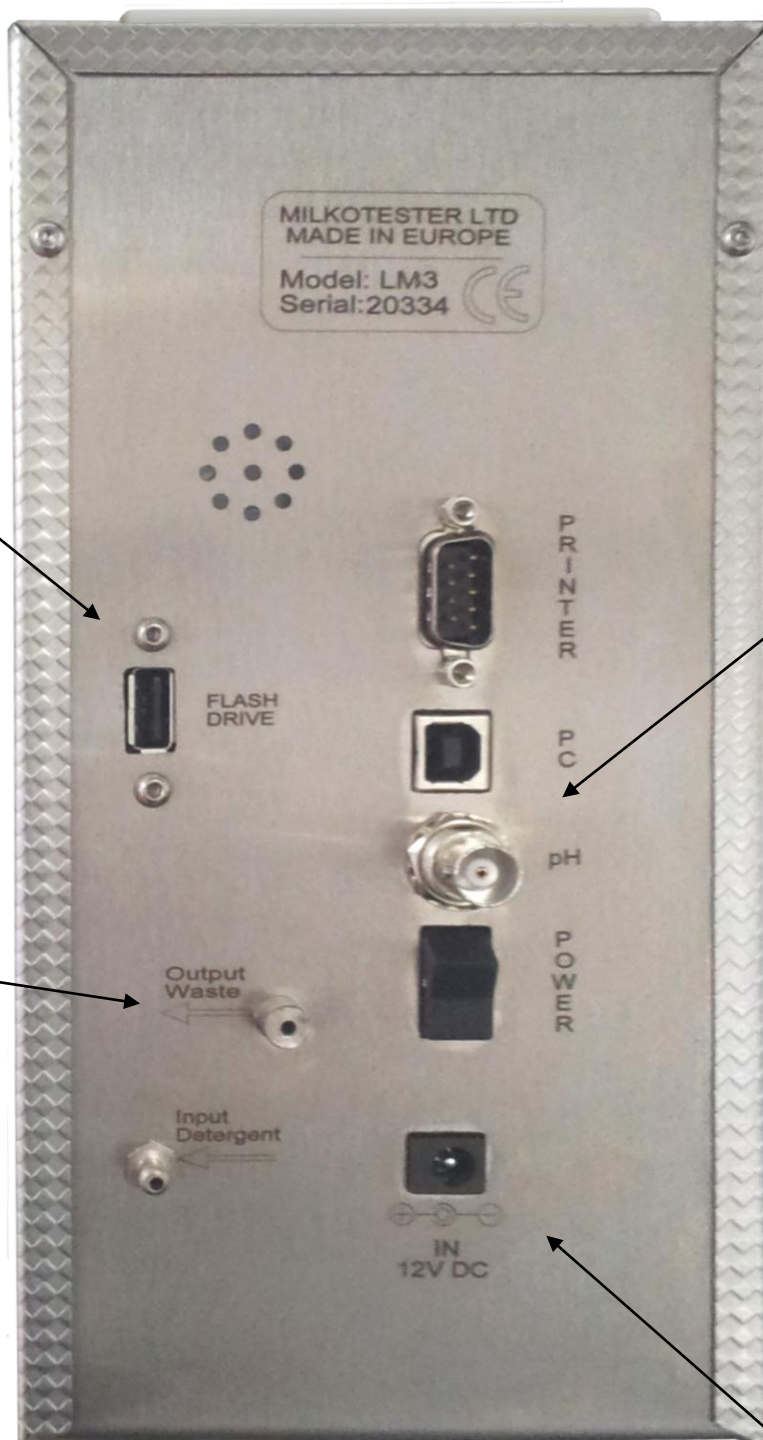
pH measurement (option) is used to determine the acidic or caustic composition of the milk sample



Second pump (option) is used for auto cleaning and rinsing the milk analyzer with cleaning solution.



Conductivity meter (option) is used for determination of salts in the milk sample.



Electronic scale (option) is used for measuring the liters of the milk that you take sample from. The scale can take up to 130 liters of weight.



Accumulator (option) can supply electricity to the milk analyzer in field work up to 8 hours without charging.

