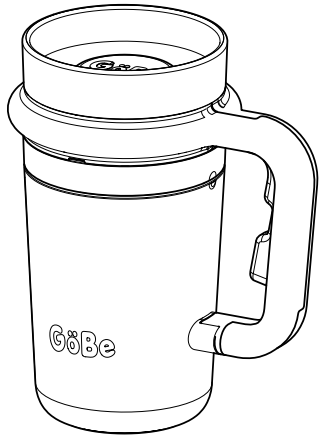


Hi There!

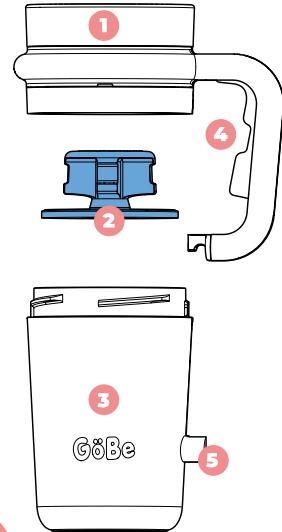
Here's your quick start guide. Explore all the features for easy and fun sipping!



User Guide

GoBe Wonder Cup

Parts

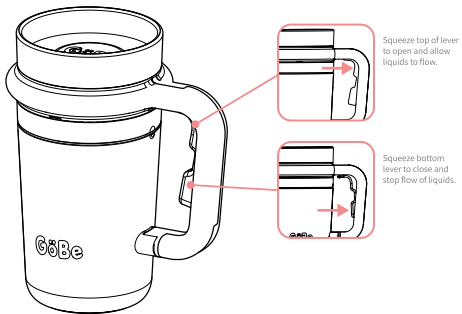


1. Lid
2. Seal
3. Cup
4. Auto Lock Lever
5. Handle/Cup Anchor

Auto-Lock Feature

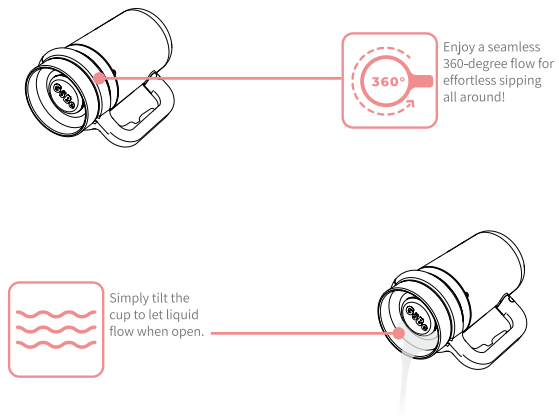
The Auto-Lock feature of the Wonder Cup is designed to keep your little one happy and mess-free! Your child can sip confidently without worrying about accidents. The easy grip handle is perfect for tiny hands, encouraging independence and helping them learn to drink without assistance.

 *Note when cup is tipped or dropped on hard surfaces the cup will automatically close to prevent spills!



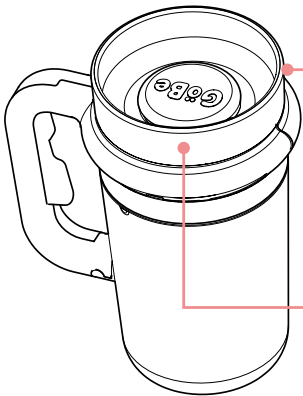
360° Free Flow Feature

The innovative 360-degree spout on the Wonder Cup allows toddlers to sip from anywhere around the rim, promoting natural drinking skills while minimizing messes.



SLP Approved

Speech-language pathologists support the free flow of water over a sippy cup to encourage natural sipping skills and promote oral development in young children.



Encourages Natural Sipping: The 360-degree spout promotes natural sipping motions, helping children practice oral motor skills essential for speech development.



Supports Self-Regulation: The free-flow design allows children to control their drinking, encouraging independence and confidence, which are vital for expressive language skills.

Disassembly

Wonder Cup

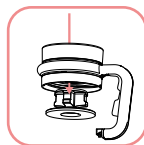


1. Firmly hold bottom of Wonder Cup and grip top of lid.



2. Twist lid counter clockwise. Releasing the lid from cup.

*Note: Anchor on cup and handle will release.



3. Pop seal out by pushing it down from the top of the lid



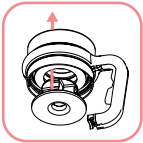
4. All three parts of the cup are top-rack dishwasher safe.

*Tip: Use handle of spoon to help push seal through lid!

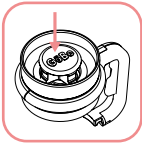
Wonder cup parts are top-rack dishwasher safe.
DO NOT use in microwave.
DO NOT fill with hot liquids.

Reassembly

Wonder Cup



1. Turn lid over to have bottom facing you. Push top of seal through bottom of lid



2. If seal is pushed through too far, gently push back down until seal is properly secured in place



3. Using the alignment marks on the cup and lid. Line up the parts and twist clockwise, until the handle is secured into the cup anchor.



4. Your Wonder Cup is reassembled.

Troubleshooting

Wonder Cup

Problem	Possible Cause	Solution
The cup seal is not opening	Pressure buildup	Open the cup and then reclose it to release any trapped pressure. This should help the seal function properly.
Auto close not working	Feature does not work on soft surfaces, such as plush carpets or couch cushions.	Try dropping the cup on a hard surface. This action can help activate the auto-close mechanism and ensure it works as intended.

**Watch the video to
see how it works!**



**use your phone camera
to scan the QR code.**

www.gobekids.co/pages/instructions

GoBe Thrive

Our mission is to help parents and kids thrive by fostering healthy habits that last a lifetime.

Questions about your GoBe Product?
We'd love to help!
contact us at hello@gobekids.co