

Access Display Group, Inc.

TEL: 800-289-1539 FAX: 877-842-5126

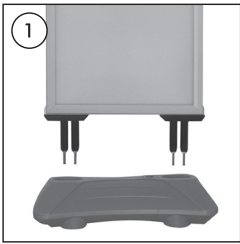
E-MAIL: customerservice@accessdisplaygroup.com

Instruction Sheet

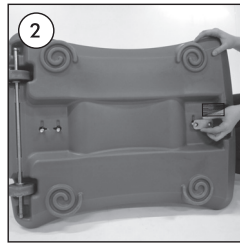
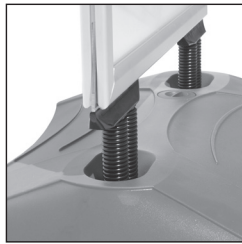
Street Master Rolling windstand Pavement Sign

WARNING !
Please use the wrench
enclosed and tighten
carefully.
When tighten too much, the
base can breach.

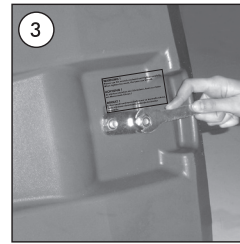
WINDPRO FRAME PART



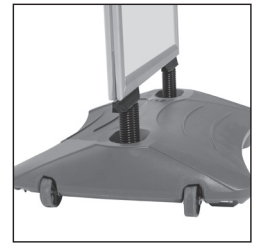
• Connect the frame by positioning the bolts at its bottom part that can fix into the mounting holes of the water base.



• Fix the 2-hole washers on to the bolts when the waterbase is turned back.



• Fix the nuts on the bolts, and with the help of a spanner make it tightened. This will complete the assembling process.



• Please inform the order number on the product or on the carton (e.g. 1/110001394-460) to the place that you have made the purchase if any problem with the product occurs.

• All rights reserved. All pictures, figures and writings are secured internationally by copy-right law. Infringements will be sued by civil and legal law.