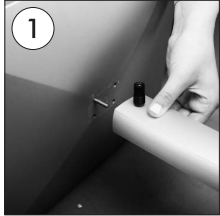
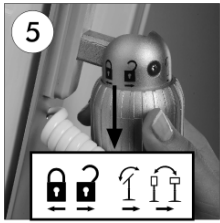
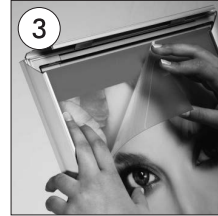
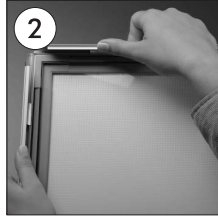
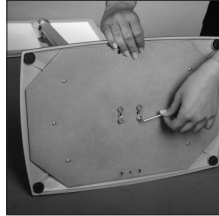


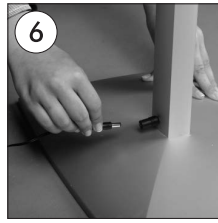
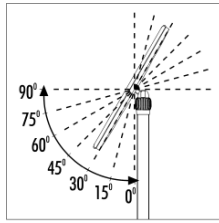
Illuminated LED Floor Display Stand with Rotating & Tilting Sign Frame (for 11" x 17" Menus & Posters)



• Complete the stand by screwing the classical base to the convex profile.



• Take the system into the opened or closed position by turning the nut at the back of the frame in the direction of arrows as in the figure. In the opened position, you can take the frame system both into the portrait or into the landscape position with a 15 degrees of angle gap. The frame is made fixed when it is taken into the closed position.



• Please plug in power cable on jack which is on the back of convex profile.

