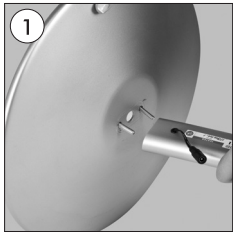
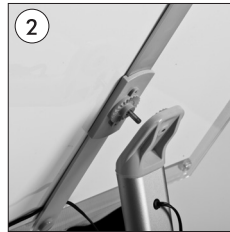


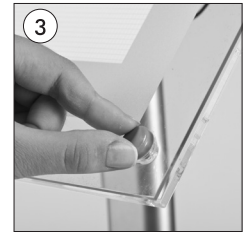
Illuminated LED Curved Display Stand with Rotating Acrylic Frame (for 11" x 17" Menus, Posters & Signs)



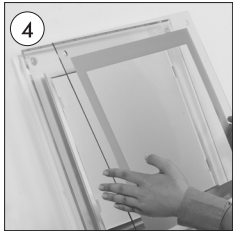
• Complete the stand by screwing the base to the elips profile.



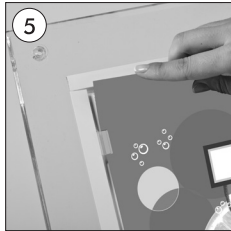
• Place the screw on the back of frame into hole on the pole. Screw the nut to fix unit.



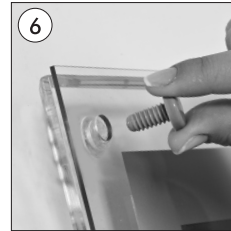
• Undo the screws on the profile.



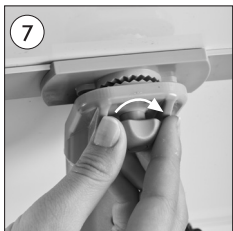
• Take off the acrylic cover.



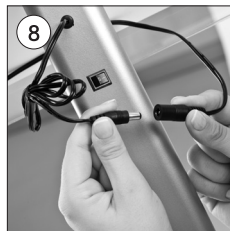
• Insert your poster into grips



• Fix the cover tightening the screw on the corners.



• Loose or tighten the nut on the back of the frame in the direction of arrows. When loose, frame can be placed either portrait or landscape. Then tighten the nut to fix the frame position. The frame is fixed when the nut is tighten.



• Plug the sockets for electrical connection.

