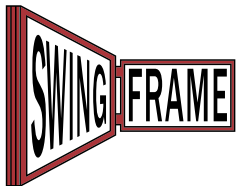


Access Display Group, Inc.  
1-800-289-1539  
151 South Main Street  
Freeport, New York 11520  
[www.displays4sale.com](http://www.displays4sale.com)

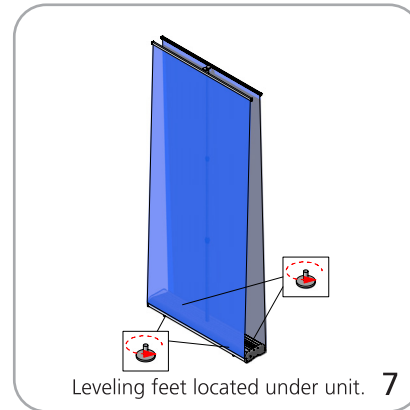
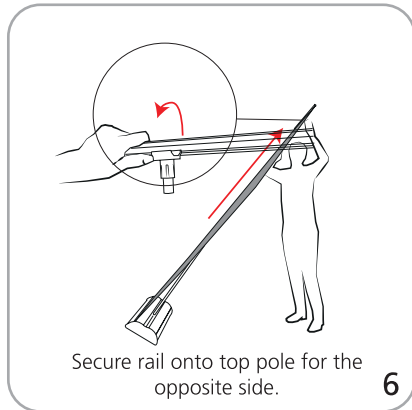
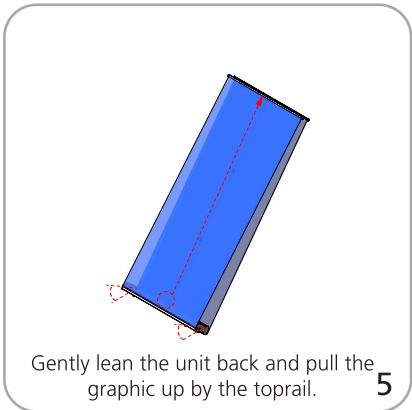
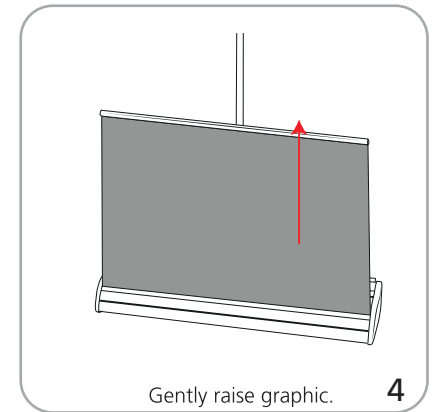
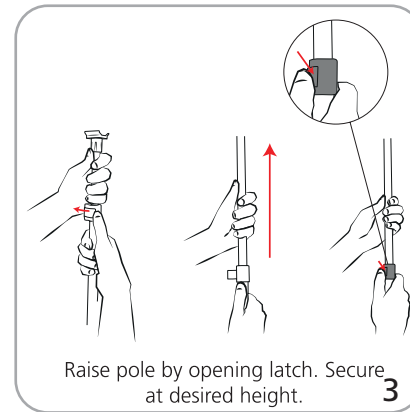
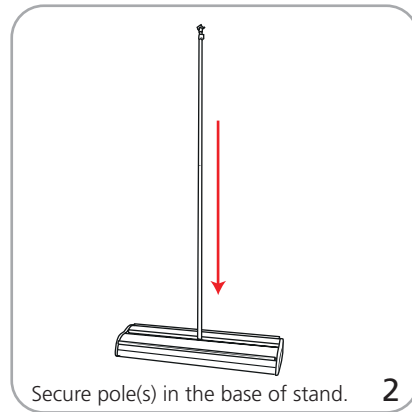
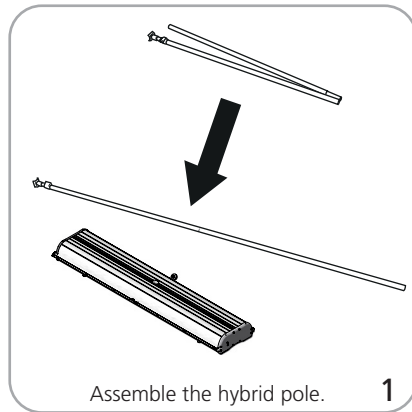


# FUJI

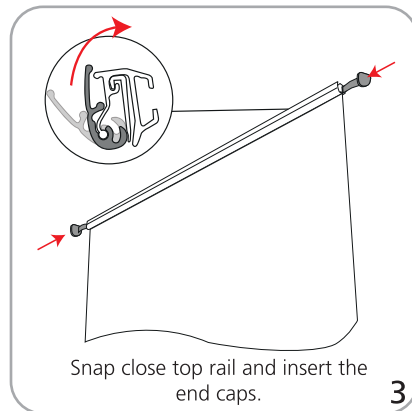
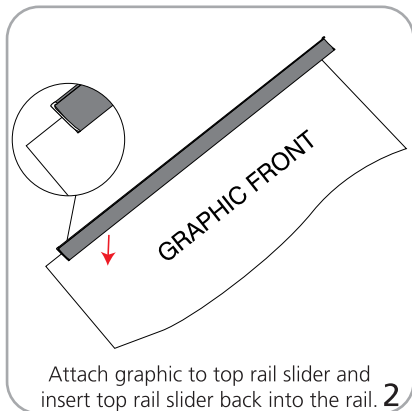
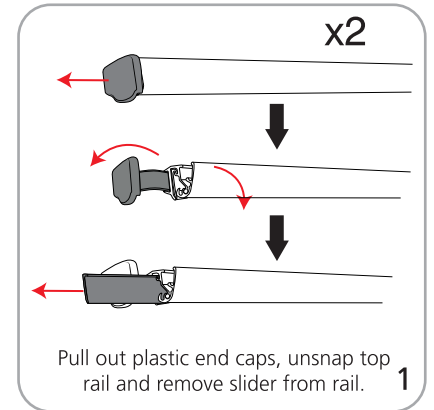
Retractable Banner Stands – Double-Sided



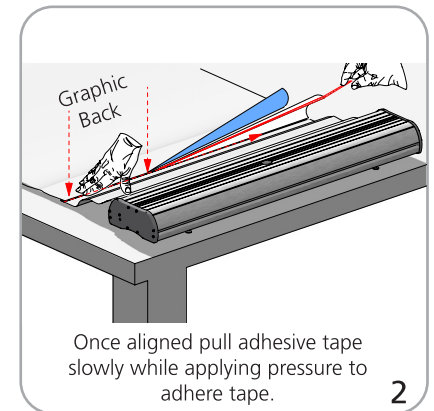
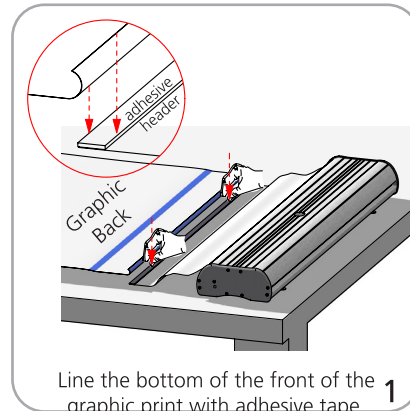
## Set-up

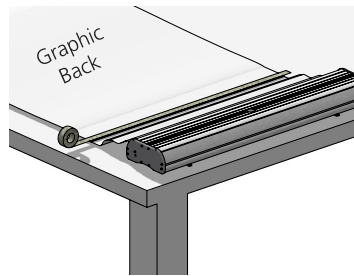


## Graphic to top rail attachment



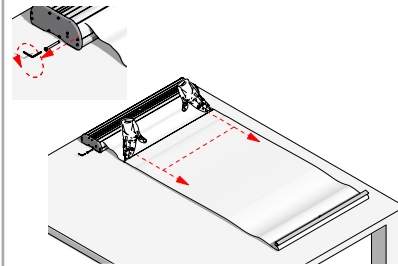
## Graphic to base attachment





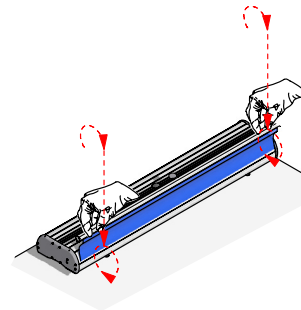
Place additional masking tape for extra protection.

3



Remove pin while holding onto the graphic so the graphic does not retract back in quickly.

4



Slowly retract the graphic back into the base.

5

Access Display Group, Inc.  
1-800-289-1539  
151 South Main Street  
Freeport, New York 11520  
[www.displays4sale.com](http://www.displays4sale.com)

