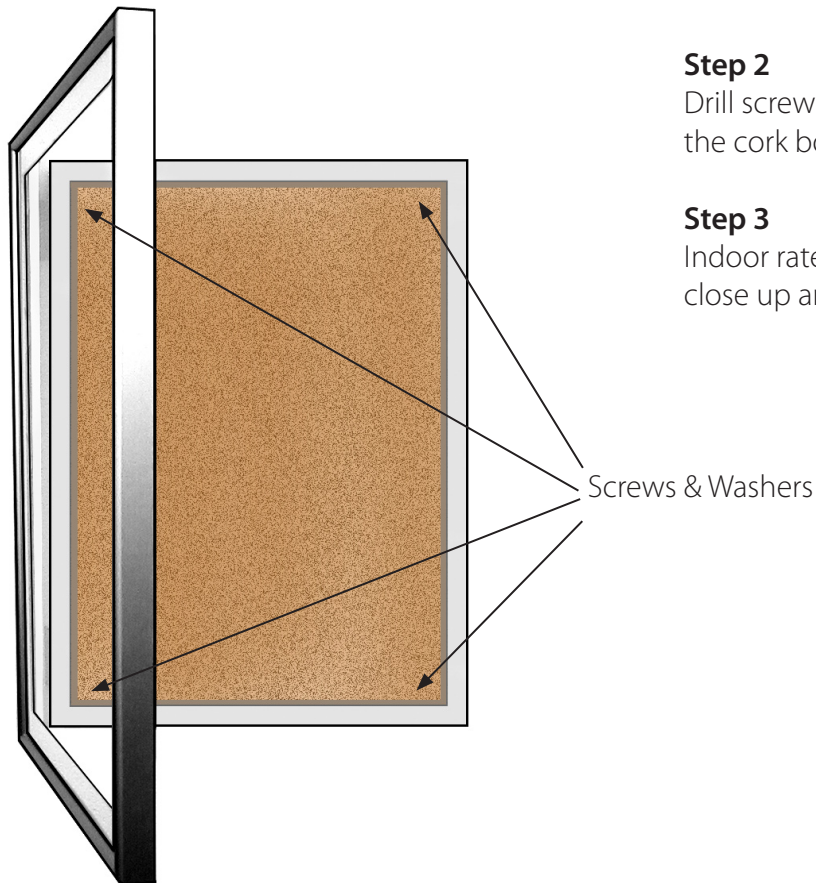


Instruction Sheet

Wall Mounting - Indoor Enclosed Bulletin Board



Step 1

Drill holes in each of the four corners of the cork board.

Step 2

Drill screws into the wall (use washers to protect the cork board from the screw pressure).

Step 3

Indoor rated clear sealant can then be used to close up any holes to protect the display.



Simple hand tools required: Level, Drill, Screwdriver