

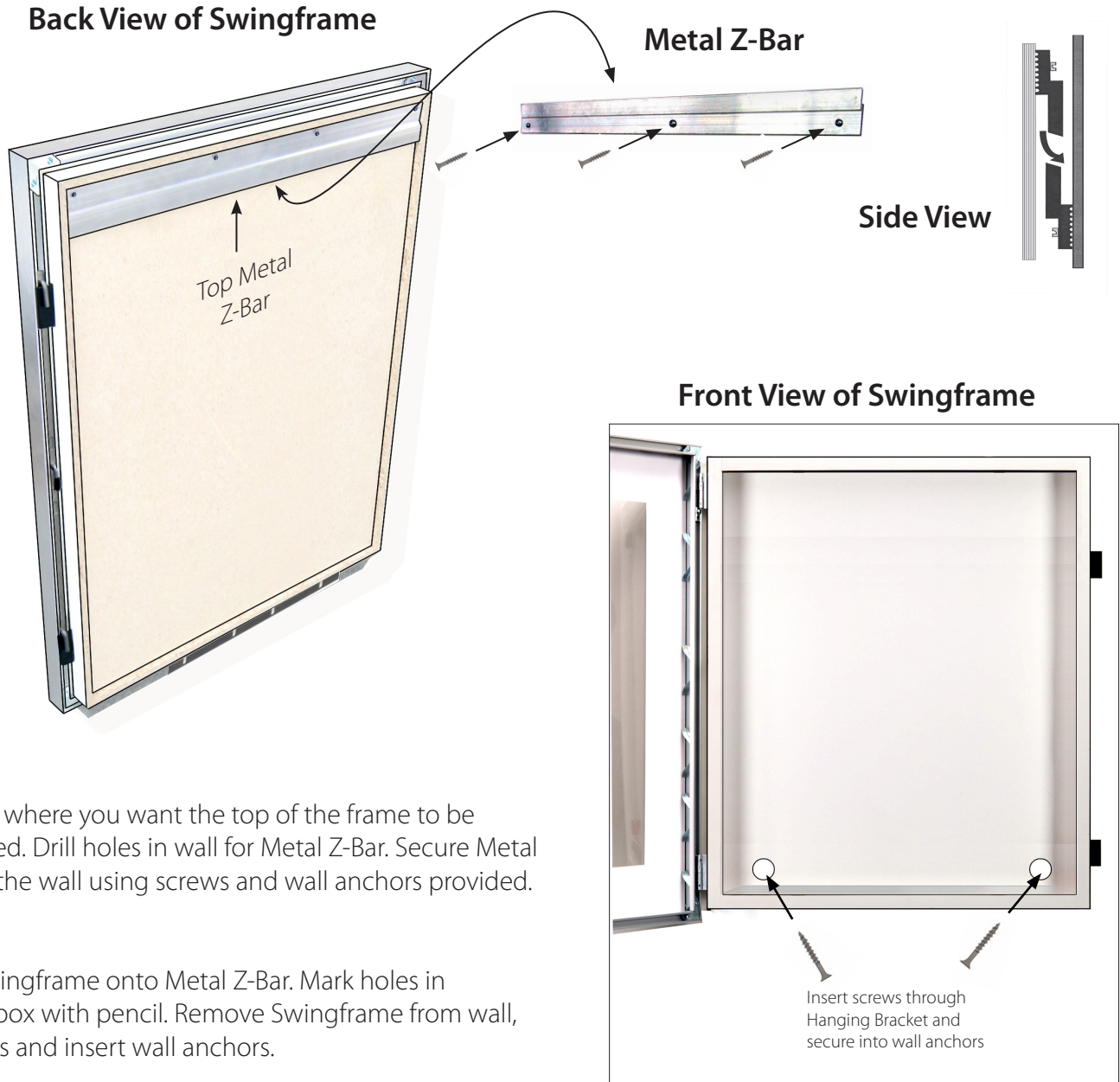
Access Display Group, Inc.

TEL: 800-289-1539 FAX: 877-842-5126

E-MAIL: customerservice@accessdisplaygroup.com

Instruction Sheet

Swingsnap Easy Snap-Open Lightbox - 5" Deep (Back-Lit)



Step 1

Measure where you want the top of the frame to be positioned. Drill holes in wall for Metal Z-Bar. Secure Metal Z-Bar to the wall using screws and wall anchors provided.

Step 2

Place Swingframe onto Metal Z-Bar. Mark holes in Shadowbox with pencil. Remove Swingframe from wall, drill holes and insert wall anchors.

Step 3

Replace Swingframe over Metal Z-Bar. Insert screws through the holes and secure into wall anchors with screwdriver.

Simple hand tools required: Level, Pencil, Drill, Phillips Head Screwdriver