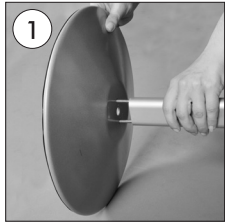
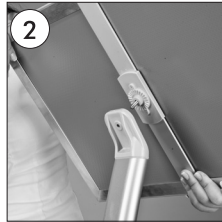
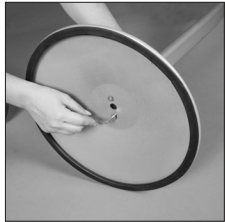


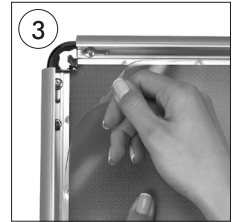
Curved Floor Display Stand with Rotating Sign Frame (for 18" x 22" Menus, Posters & Signs)



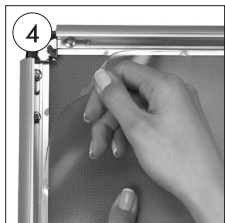
1 • Complete the stand by screwing the classical base to the elips profile.



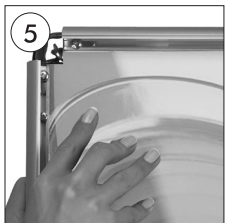
2 • Place the screw on the back of frame into hole on the pole. Screw the nut to fix the unit.



3 • Open all profiles.



4 • Take-off the anti-reflex cover.



5 • Place the poster in.



6 • After placing the cover back on the poster, close the profiles.



7 • Loose or tight the nut on the back of the frame in the direction of arrows. When loose, frame can be placed either portrait or landscape. Then tighten the nut to fix the frame position. The frame is made fixed when it is taken into the closed position.



Portrait

Landscape

