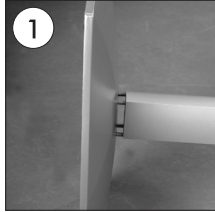
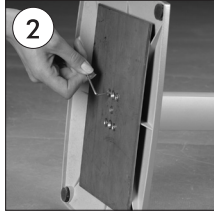


Adjustable Floor Display Stand with Rotating & Tilting Sign Frame (for 8.5" x 11" Menus, Posters & Signs)

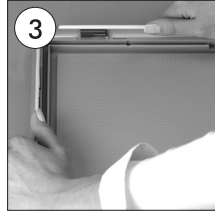


1

• Complete the stand by screwing the classical base to the convex profile.

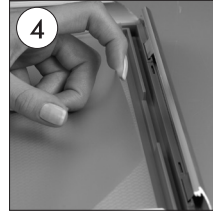


2



3

• Open all profiles.



4

• Take-off the anti-reflex cover.



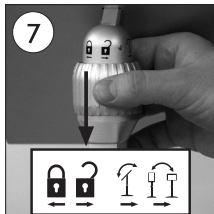
5

• Place the poster in.



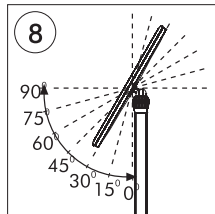
6

• After placing the cover back on the poster, close the profiles.

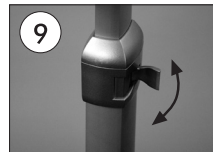


7

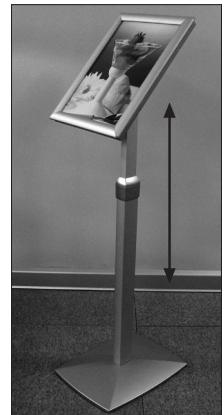
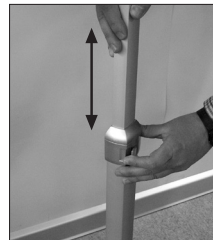
• Take the system into the opened or closed position by turning the nut at the back of the frame in the direction of arrows as in the figure. In the opened position, you can take the frame system both into the portrait or into the landscape position with a 15 degrees of angle gap. The frame is made fixed when it is taken into the closed position.



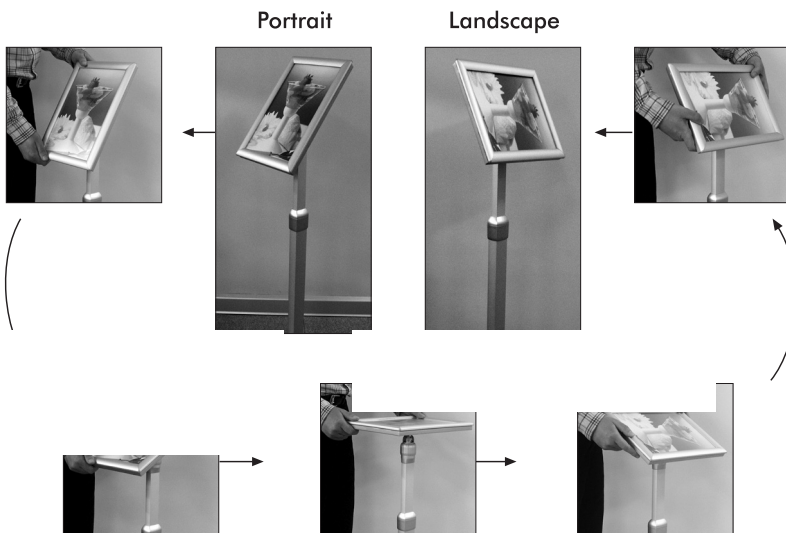
8



9



• Adjust the height of the menuboard by opening or closing the fastener on the leg as in the figure.



Portrait

Landscape

