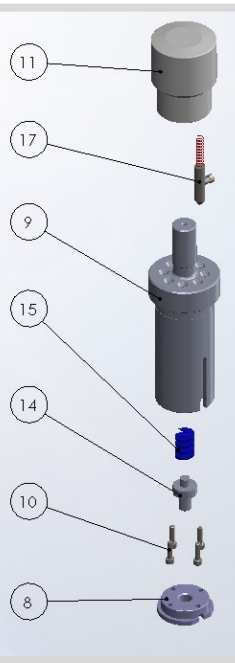




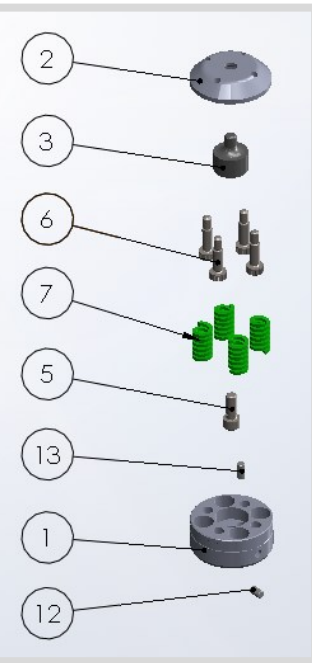
CUSTOMER INFORMATIONS

Name: _____ Telephone n. : _____
 Machine Model: _____ Fax: _____
 Material Type: _____ Email: _____
 Material Thickness: _____ Address: _____

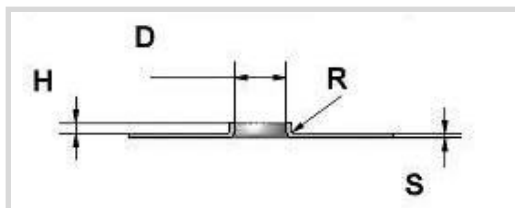
EXTRUSION AFTER PRE-PIERCE PUNCH	
⇒	Adjustable lenght
⇒	Replaceable insert
8	UPPER DIE
9	PUNCH HOLDER
10	SCREW
11	HEAD
17	ADJUSTING LEVER
14	EJECTOR
15	SPRING



EXTRUSION AFTER PRE-PIERCE DIE	
⇒	Die with stripper and springs
⇒	Replaceable insert
1	DIE HOLDER
2	STRIPPER PLATE
3	PUNCH
5	SCREW
6	SCREW
7	SPRING
12	PIN
13	PIN



Notes and drafts. Please specify here the distance of any close deformation.



CUSTOM DIMENSIONS (mm)

D= _____
 H = _____
 R = _____ *
 S = _____

FNC coating: _____ YES/NO

* = not strictly required

ORDERING SPECIFICATIONS

Order _____ Offer _____

Item required: _____

Number of previous order: _____

Extrusion according to DIN7952

- Thread size M2.5 pre-punch diameter 1,0mm, thickness 0,8-1,5 , diameter hole 2,10 – 2,30*
- Thread size M3 pre-punch diameter 1.5/1.8mm thickness 0,8 - 1,5 , diameter hole 2,55 – 2,80*
- Thread size M4 pre-punch diameter 2.0/2.3mm thickness 1,0 – 2,0 , diameter hole 3,35 – 3,70*
- Thread size M5 pre-punch diameter 2.5/2.7mm thickness 1,0 – 2,0 , diameter hole 4,25 – 4,65*
- Thread size M6 pre-punch diameter 3.0/3.3mm thickness 1,5 – 2,5 diameter hole 5,10 – 5,55*
- Thread size M8 pre-punch diameter 4.1/4.5mm thickness 1,5 - 2,5 diameter hole 6,80 – 7,40*
- Thread size M10 pre-punch diameter 5/5.5mm thickness 1,5 - 2,5 diameter hole 8,50 – 9,30*

Extrusion tapping Height= 2 times thickness

*Size hole with thread in machine