

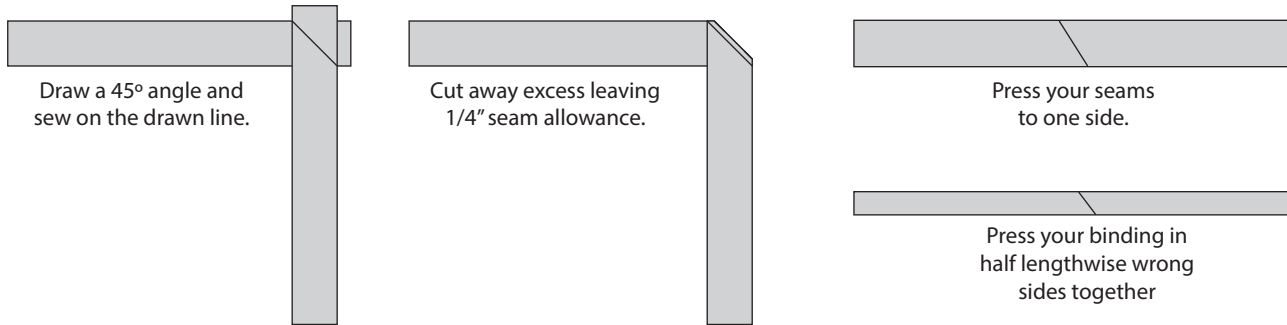
# Binding Tutorial

To determine how much binding you will need measure the width and length of your project and multiply it by 2 add 18". *Example my quilt is 30" wide x 50" long =  $80" \times 2 = 160" + 18" = 178"$  of binding.*

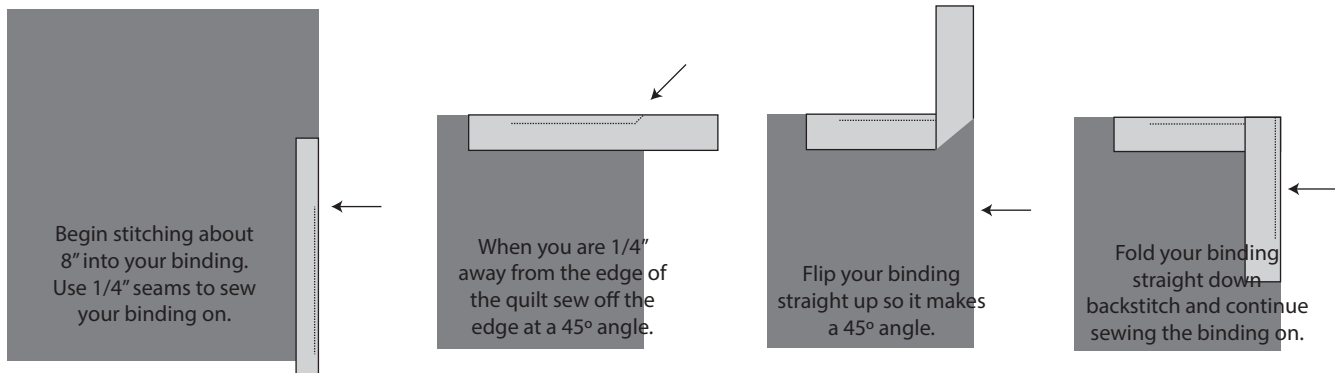
To determine how many 2 1/4" strips to cut. Measure the actual width of your fabric not including selvages (you don't want to use those). Now divide your width into the amount of binding you need.

*Example my fabric width is 45" but 2" is selvedge so my actual usable width is 43". Divide 43" into 178" I will need 5 strips.*

Cut the number of binding strips you need, 2 1/4" by the width of fabric. Cut off the selvedge and sew all your binding strips together. Use the method below to join your strips and prepare your binding.

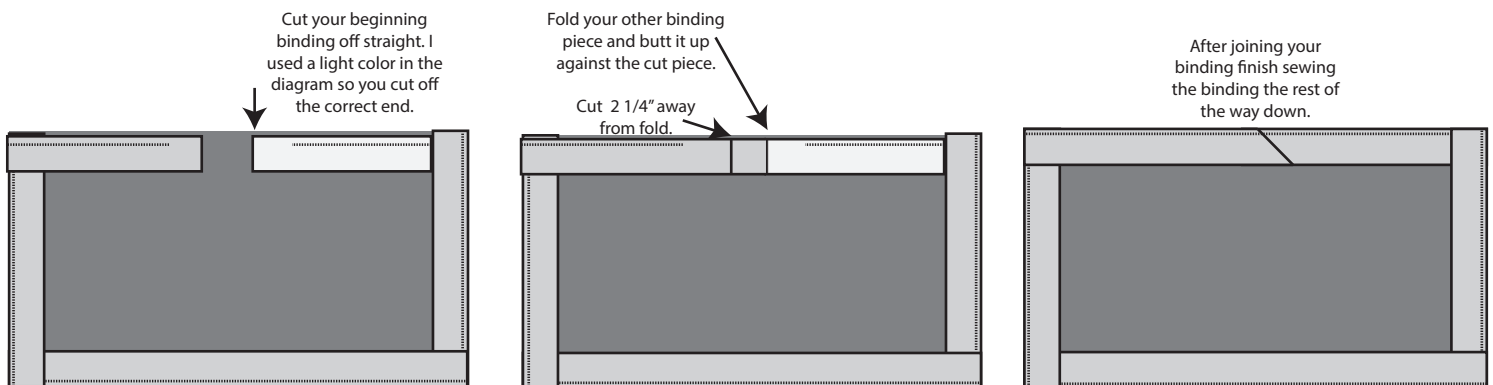


Lay your quilt right side up. Before you begin to sew, audition your binding by placing it around your quilt to ensure that your connecting seams are not in the corners of your quilt. Start by placing your binding raw edges to raw edges towards the middle of one side of your quilt. Leave about 8" before beginning to sew. It will help when joining the binding together.



Continue sewing the binding on and mitering all 4 corners. Follow the 3 diagrams above to miter each corner. When you get about 8" away from the starting point backstitch and stop. It's time to join your two ends.

Cut one end of your binding off straight make sure you are a few inches away from your stitching. Fold your other binding piece butting the fold up to the cut piece, add 2 1/4" past the fold and cut that piece off straight. Open your binding and draw a 45° line from corner to corner. Pinch and pin your quilt out of the way of your binding that is not connected. This will give you room to join your two binding pieces. With right sides together sew on the line. Trim away excess. Press and refold your binding.



Your binding is now attached. Trim away any excess batting. At the ironing board press your binding outward and fold the finished folded edge to the back side of your quilt. It will cover your stitching. Your corners are mitered so they will easily fold into a miter when pressed. Hand stitch your binding down with a small blind stitch.