



# HALLOWEEN PRINTABLES



Spooky  
stuff  
to make  
and do!



Made in Ashford

Designed and illustrated by

Tinybeegle

# Made in Ashford Halloween Printables

## Instructions

The pages are set to print at A4 size. Make sure to select fit to page. We recommend you print on card, particularly the snap cards, glasses and mask. If you don't have card but want to make them thicker you can stick them on any spare bits of cardboard you have around the house - cereal boxes will work perfectly for this!

Only print what you need. E.G. print pages 3-4 for just the bunting or pages 5-6 for just the snap cards etc. We have also created black and white versions for you to colour in so select pages 8-16 if you would like to save your ink and print the black and white pages only.

**Spooky bunting:** print and cut out the triangles, make holes in the top corners where shown and string up!

**Creepy Cards:** cut out the cards following the thin black lines. You can find instructions online for how to play snap and you can also use the cards to play a memory game.

For the **Pumpkin Glasses**, **Day of the Dead Flower Crown** and **Sugar Skull Mask** and follow the instructions shown on the pages.

The **Haunted House Scene** and **Halloween Colouring Sheet** are printed single sided so you can cut them out and display them when you're done.

We'd love to see you enjoying your finished creations. Please share pictures with us via our social media channels.

Tag us **@madeinashford** and **@tinybeegle** on instagram, facebook or twitter



## Have fun!

Find lots more free  
printable activities at  
[www.madeinashford.com](http://www.madeinashford.com)

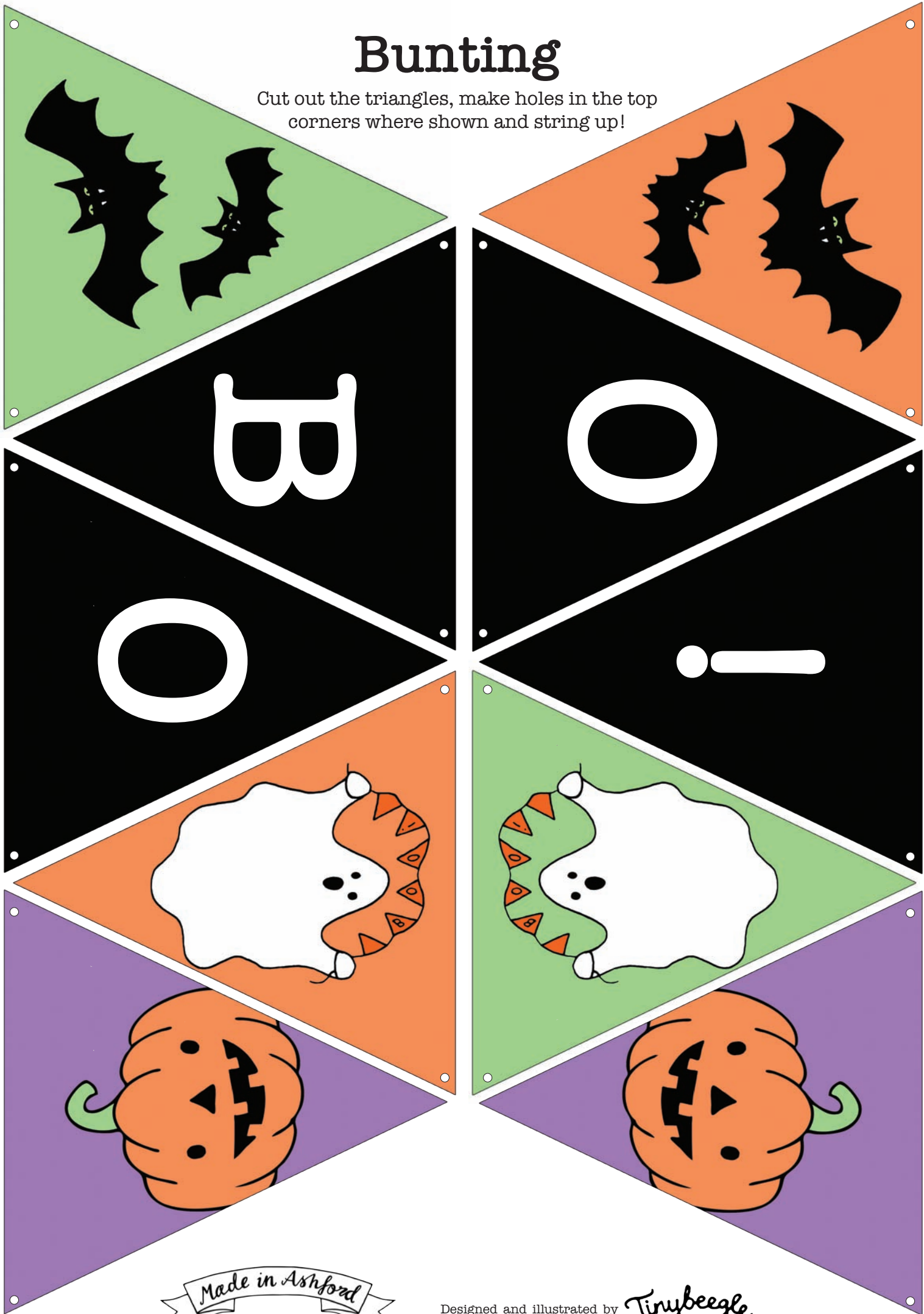
This activity pack is  
designed and illustrated  
by

*Tinybeegle*  
for

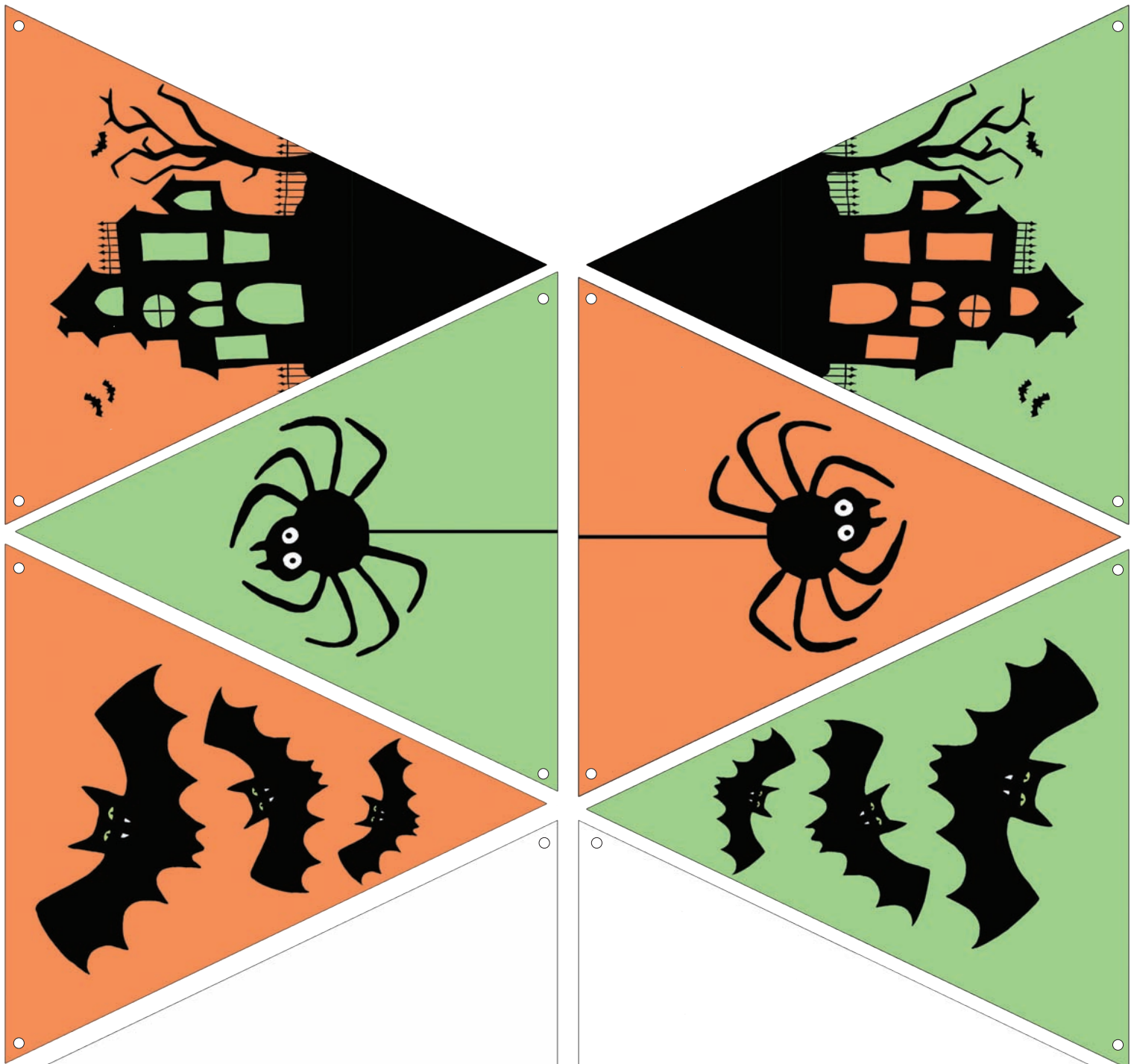
*Made in Ashford*

# Bunting

Cut out the triangles, make holes in the top corners where shown and string up!







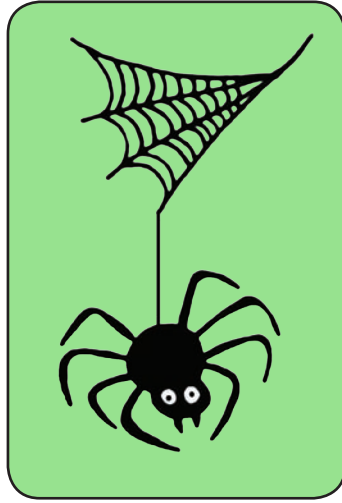
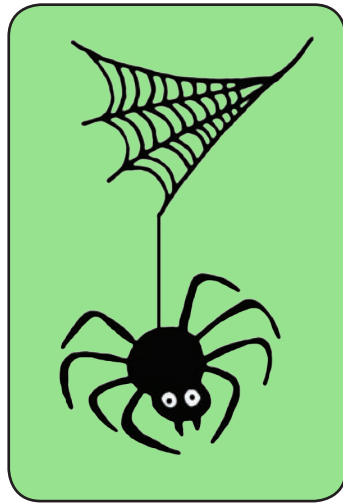
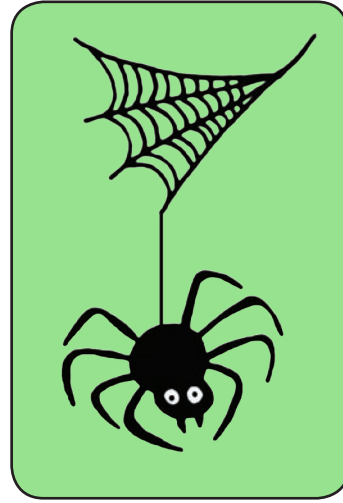
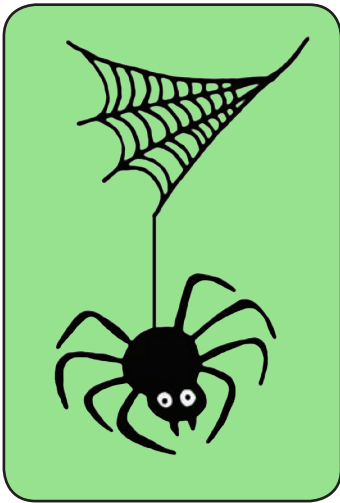
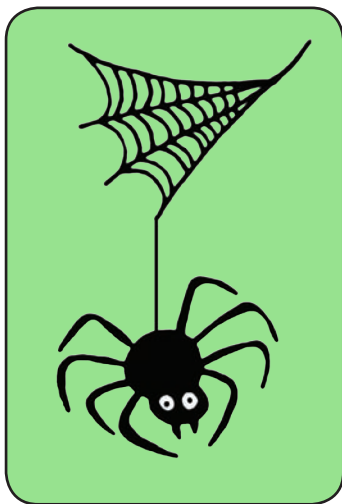
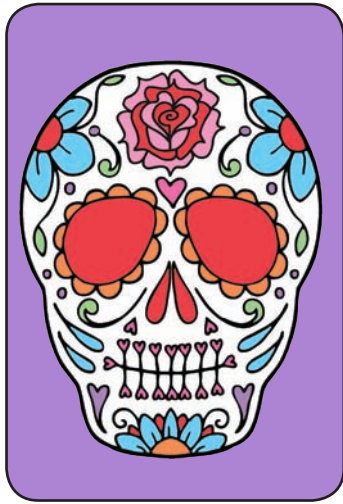
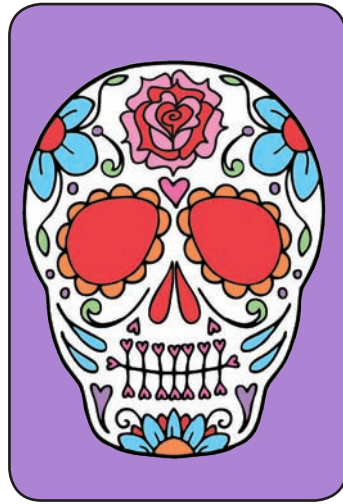
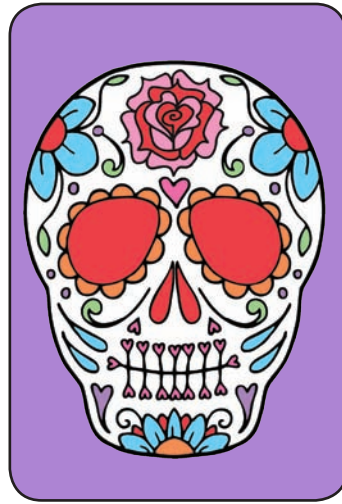
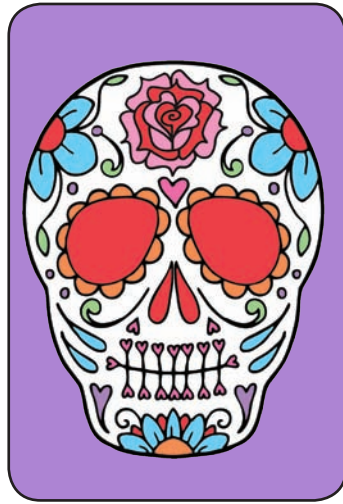
Blank for your own designs  
(remember the point goes at the bottom)

Made in Ashford

Designed and illustrated by *Tinybeegle*

# Halloween Snap Game Cards







# Day Of The Dead Flower Crown

Cut out flower crown and black headband strips

Stick tab A behind here

Stick tab B behind here



When assembled tape straps together behind the head to fit

**B**  
glue  
here

**A**  
glue  
here

## Pumpkin Glasses

Stick tab A behind here

Stick tab B behind here



Cut out Arms and fold tabs back

**A**  
glue  
here

**B**  
glue  
here

# Who lives in the haunted house?

Can you add your own creepy characters to our spooky scene?



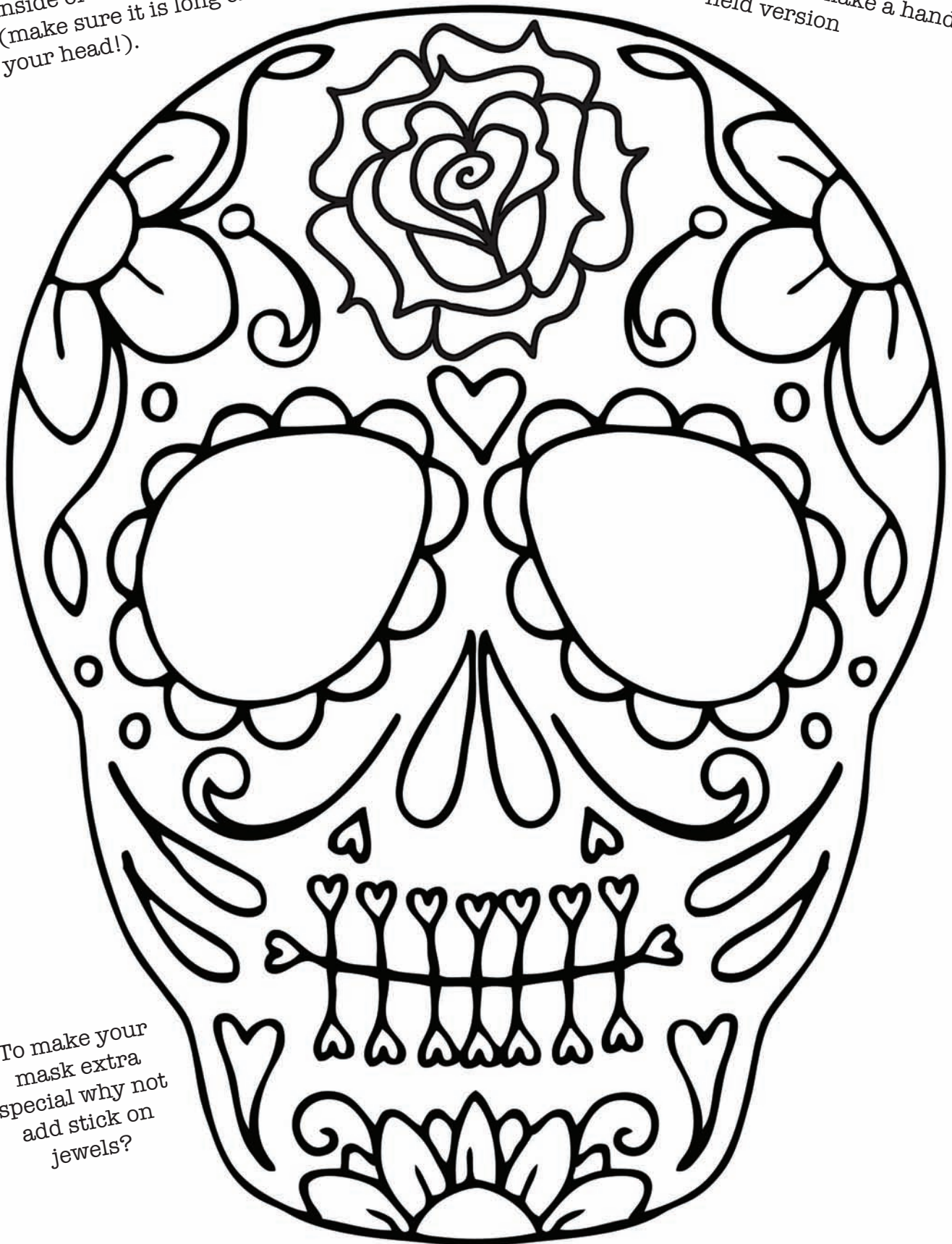


# Day of The Dead Mask

## INSTRUCTIONS

1. Cut out the skull shape and eyeholes.
2. Colour in.
3. Stick or staple ribbon or elastic to the inside of the mask either side of the eyeholes (make sure it is long enough to tie behind your head!).

Alternatively rather than cutting the eyeholes out colour them in then attach a paper straw to the back of the mask to make a hand held version

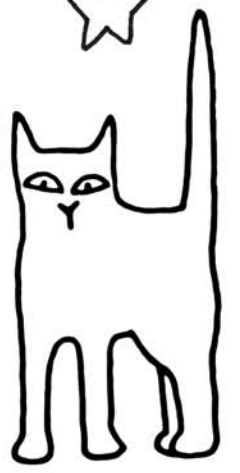


To make your mask extra special why not add stick on jewels?



**AFRAID**  
*Made in Ashford*

HAPPY  
HALLOWEEN

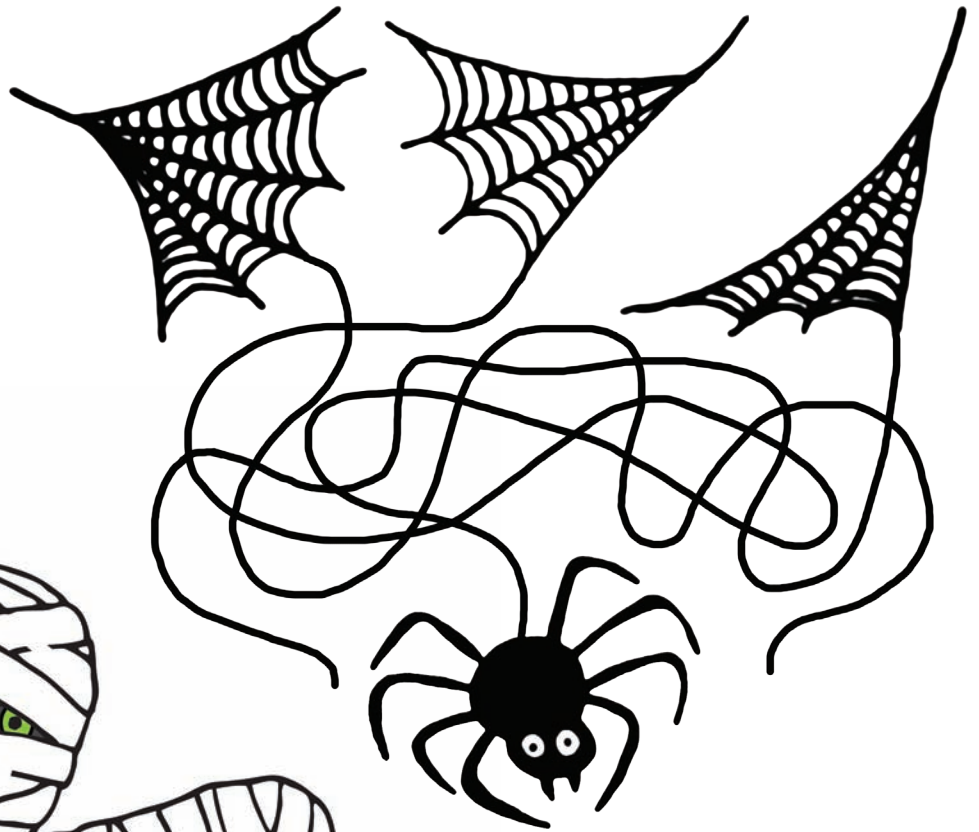


Tinybeagle



# WHICH WEB?

Our spooky spider has got himself in a tangle. Can you tell which web she is attached to?



Start



**MUMMY MAZE**

Finish

Can you find your way through the bandages?



# SPOOKY WORD SEARCH

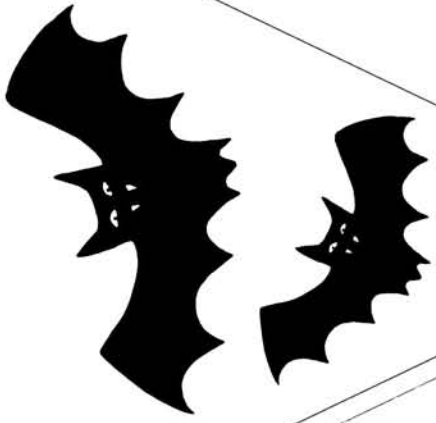
Can you find these hidden words?:

BOO  
SPOOKY  
SPIDER  
BAT  
CREEPY

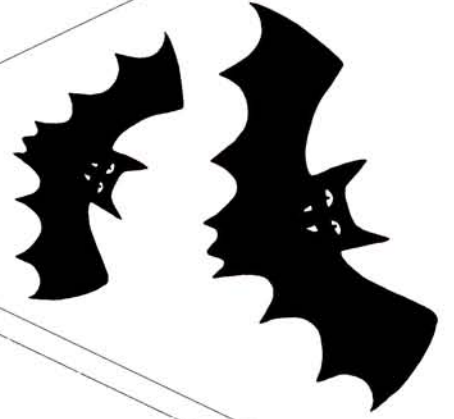
HALLOWEEN  
MAGIC  
SCARY  
MUMMY  
GHOST

O	B	S	M	H	P	Q	S	L	G
V	A	P	A	A	A	O	S	M	G
I	T	O	G	L	B	U	C	P	O
G	W	O	I	L	O	Y	A	O	V
H	R	K	C	O	O	F	R	U	M
O	F	Y	U	W	D	C	Y	F	U
S	Y	C	R	E	E	P	Y	N	M
T	L	J	D	E	H	E	A	O	M
J	J	H	B	N	K	R	L	Q	Y
L	P	S	S	P	I	D	E	R	O





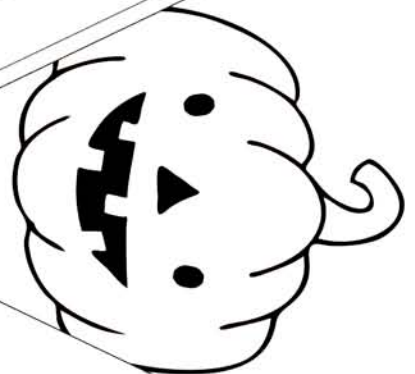
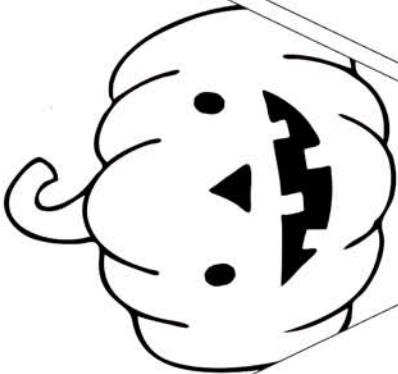
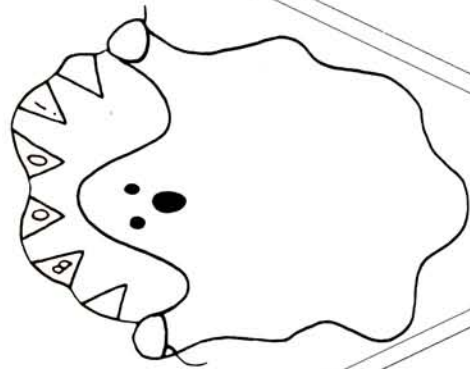
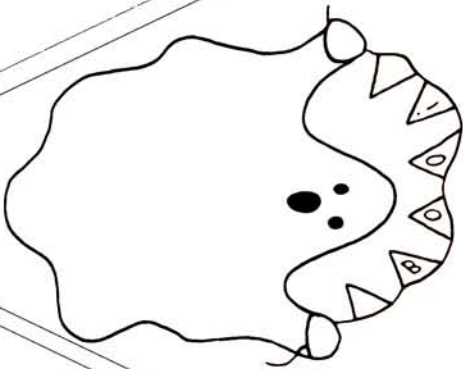
B

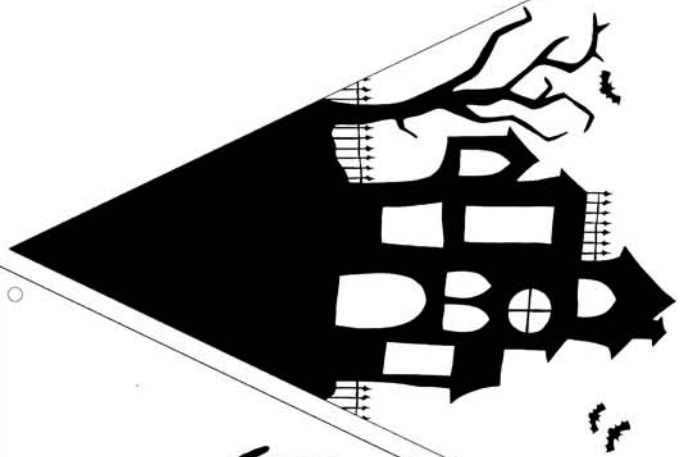
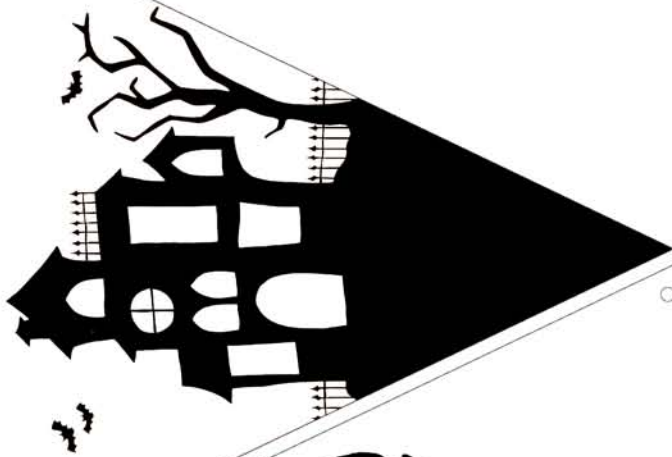


O

O

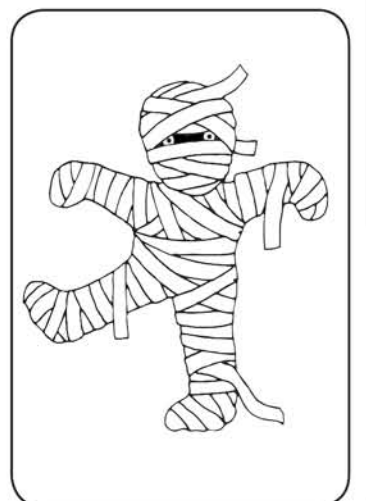
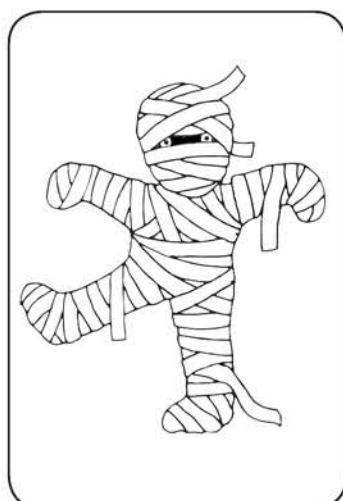
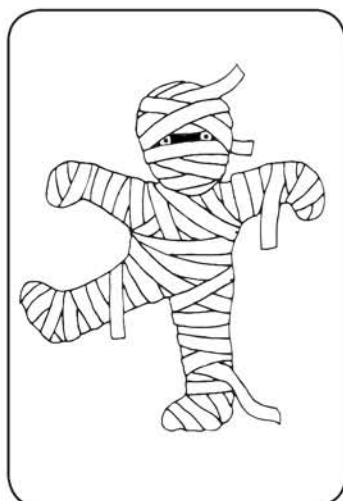
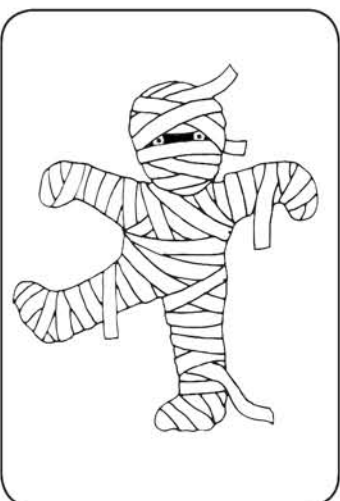
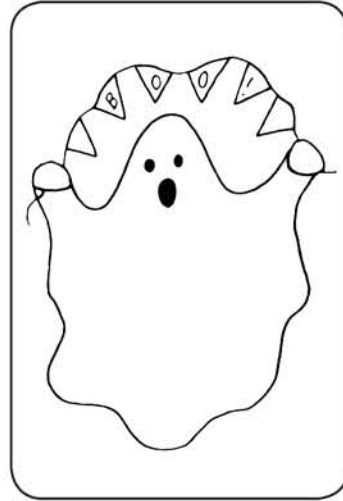
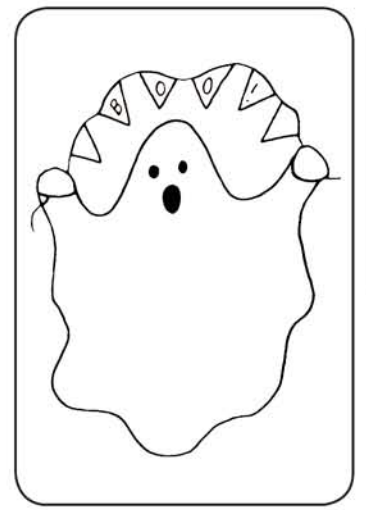
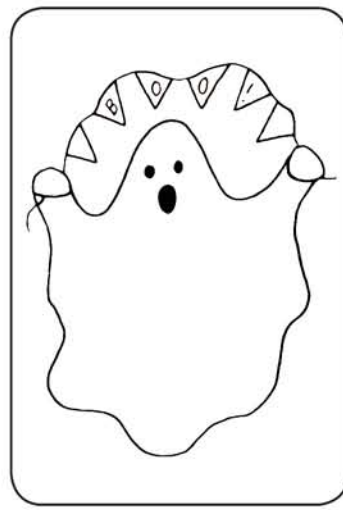
i



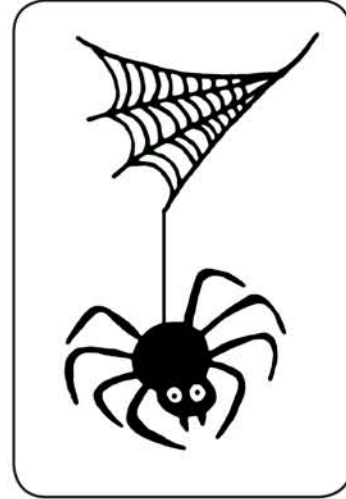
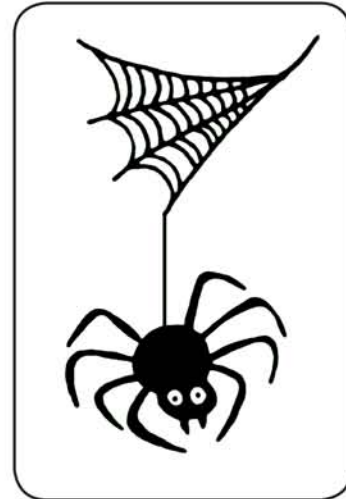
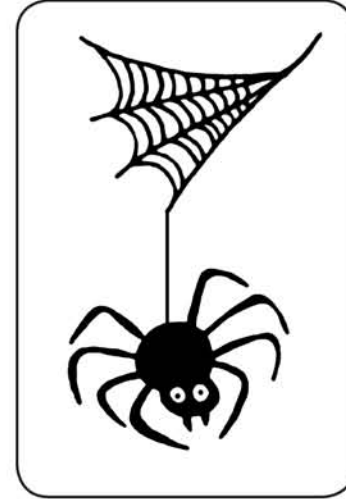
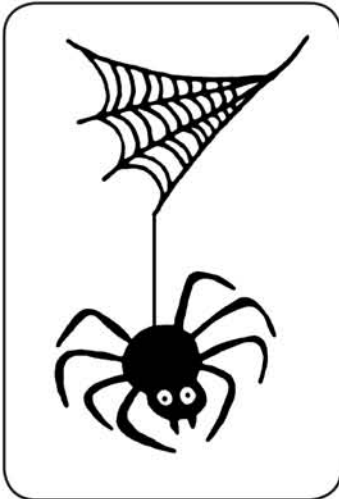
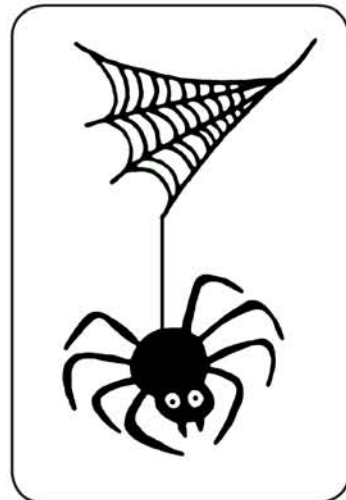
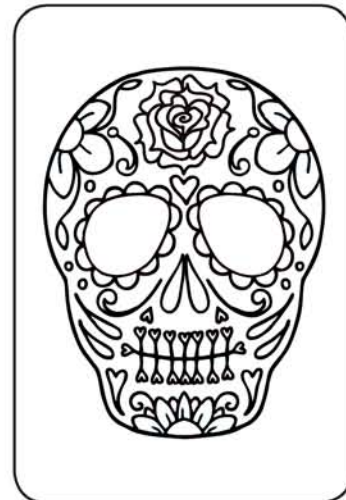
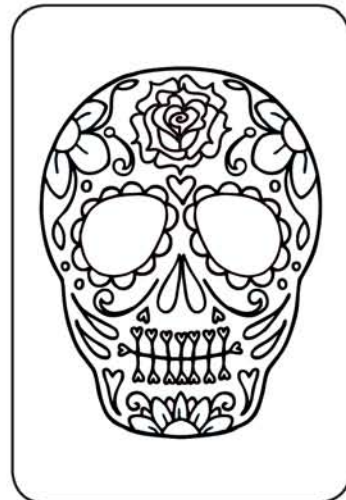
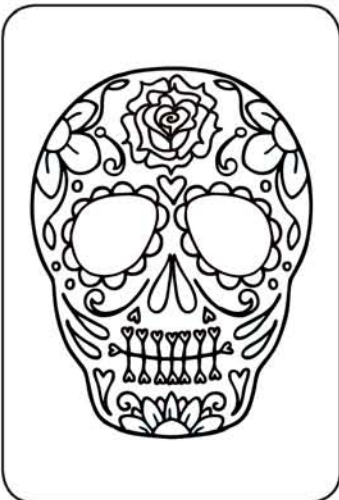
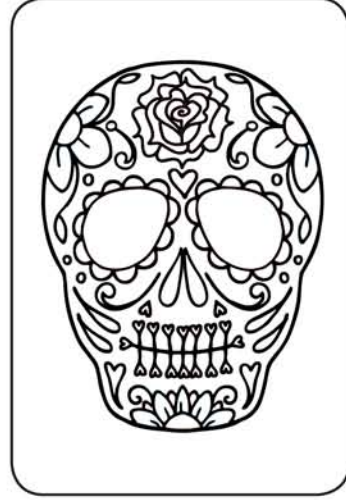
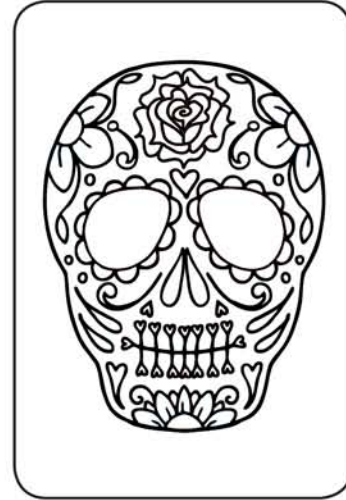
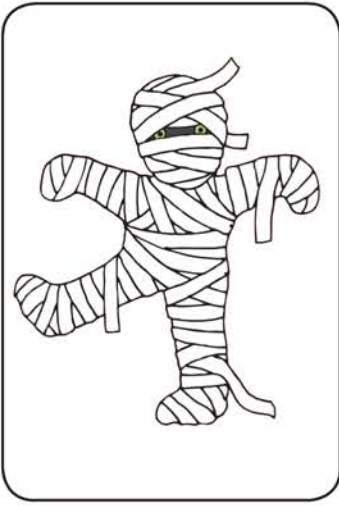


Blank for your own designs  
(remember the point goes at the bottom)

# Halloween Snap Game Cards

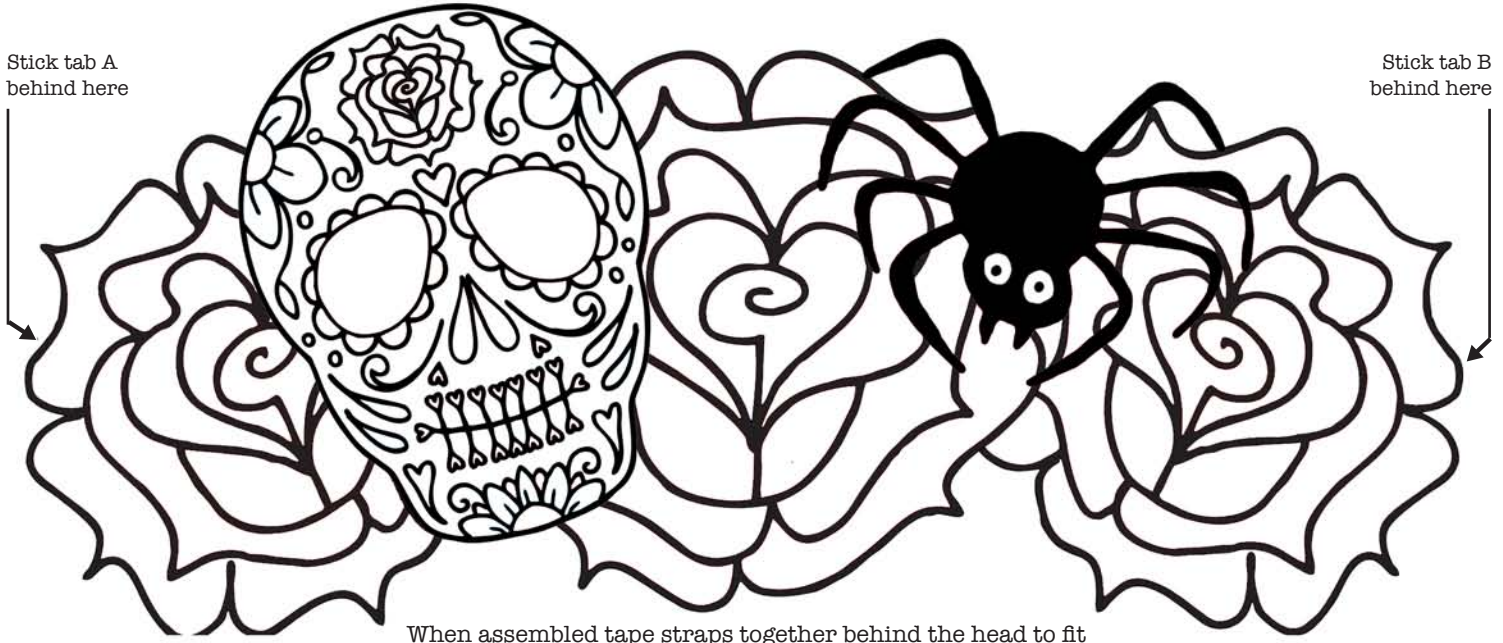






# Day Of The Dead Flower Crown

Cut out flower crown and black headband strips



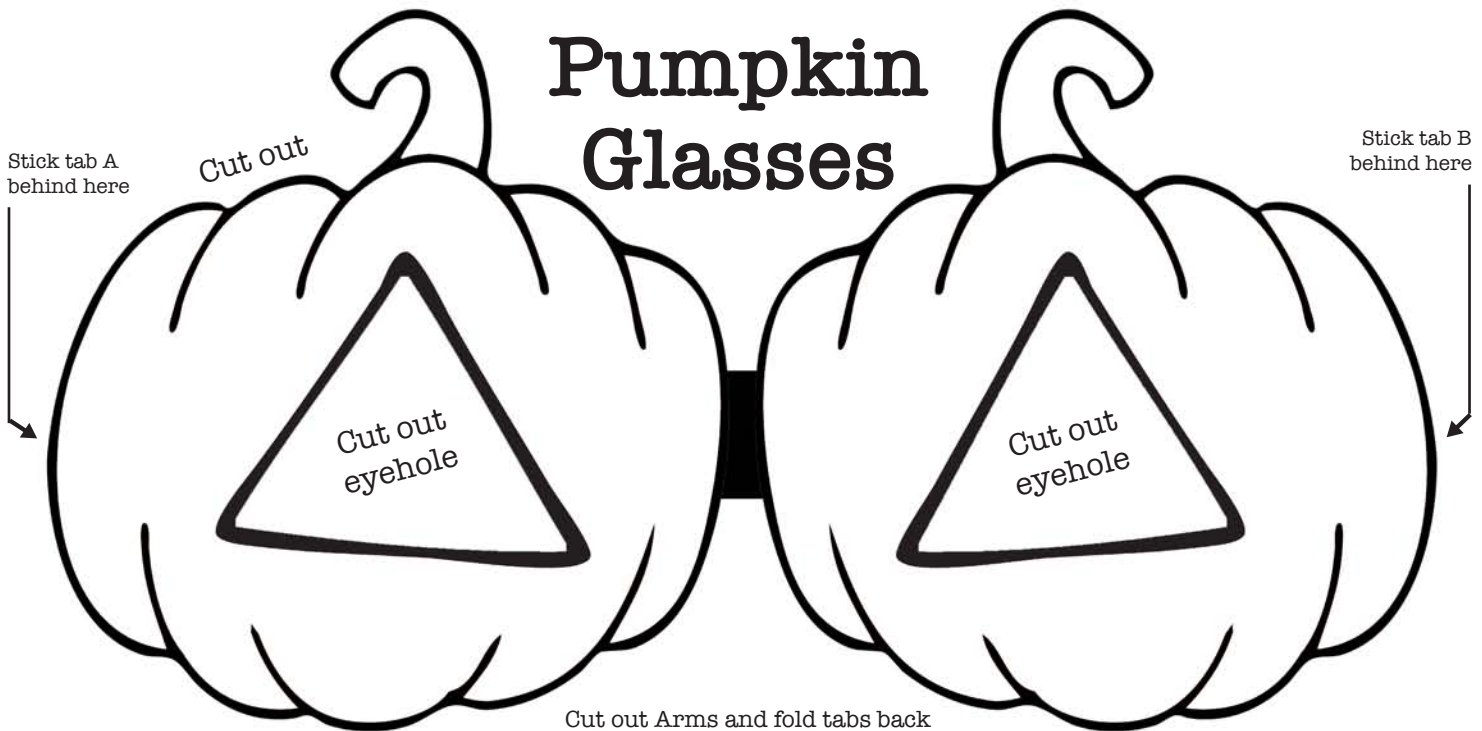
**B**  
glue  
here

**A**  
glue  
here

## Pumpkin Glasses

Stick tab A  
behind here

Stick tab B  
behind here



**B**  
glue  
here

**A**  
glue  
here





*Made in Ashford*

Made in Ashford is a collaborative of over 50 local designer/makers and crafts people selling and supporting each other in a stylish shop located in the Ashford Borough Council owned Park Mall shopping centre. Our shop is run by us, Craftship Enterprise CIC, a social enterprise which aims to help support and nurture small creative businesses.



We seek to make creativity accessible to all and we try to help as much as possible within our community to make our town an even better place to be.



*Tinybeegle*

Danielle Williamson (aka Tinybeegle) is an artist, illustrator and graphic designer based in Headcorn in Kent. She is also one of the directors of Craftship Enterprise CIC and is behind all of the shop branding, marketing material and illustrated images we use. She has illustrated and designed many colouring sheets and activity packs for us and created lots of the craft and draw along videos on the Made in Ashford Youtube channel.

**Made in Ashford · unit 26 Park Mall, Ashford, Kent**

[www.madeinashford.com](http://www.madeinashford.com) find us on Facebook/Instagram/Twitter