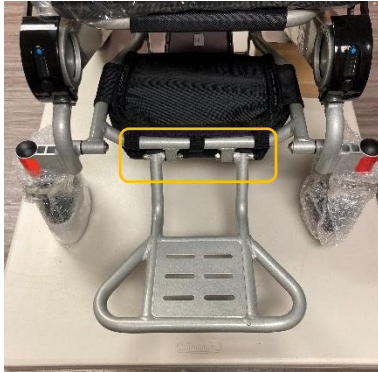


**CITY Foldable Power Chair  
Adjustable Footplate Set-Up Guide**



**Pinpoint the 2 bolts that fasten the footrest to the frame.**

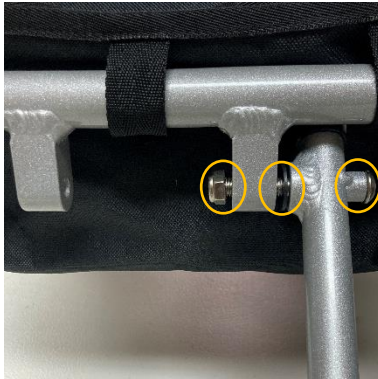


***Tools required***

- 5mm Alley Key
- ½ in Bolt socket



**With the old footrest removed. Place both adjustable legs with the drilled holes facing out**



**Follow the photo above for correct order of Installation**

- 1 - Bolt**
- 1 - Washer**
- 1 - Nut**



**Repeat the same steps for the following side.**

**Tighten each side sufficiently**



**Pull the 2 black tabs situated on the footrest**

**Give a slight jiggle to allow the footrest to slide into its correct position**



**Common Questions**

- a) Hard to move? Try loosening the 2 Bolts slightly**
- b) Footrest is loose and floppy? Tighten the 2 Bolts until firm.**